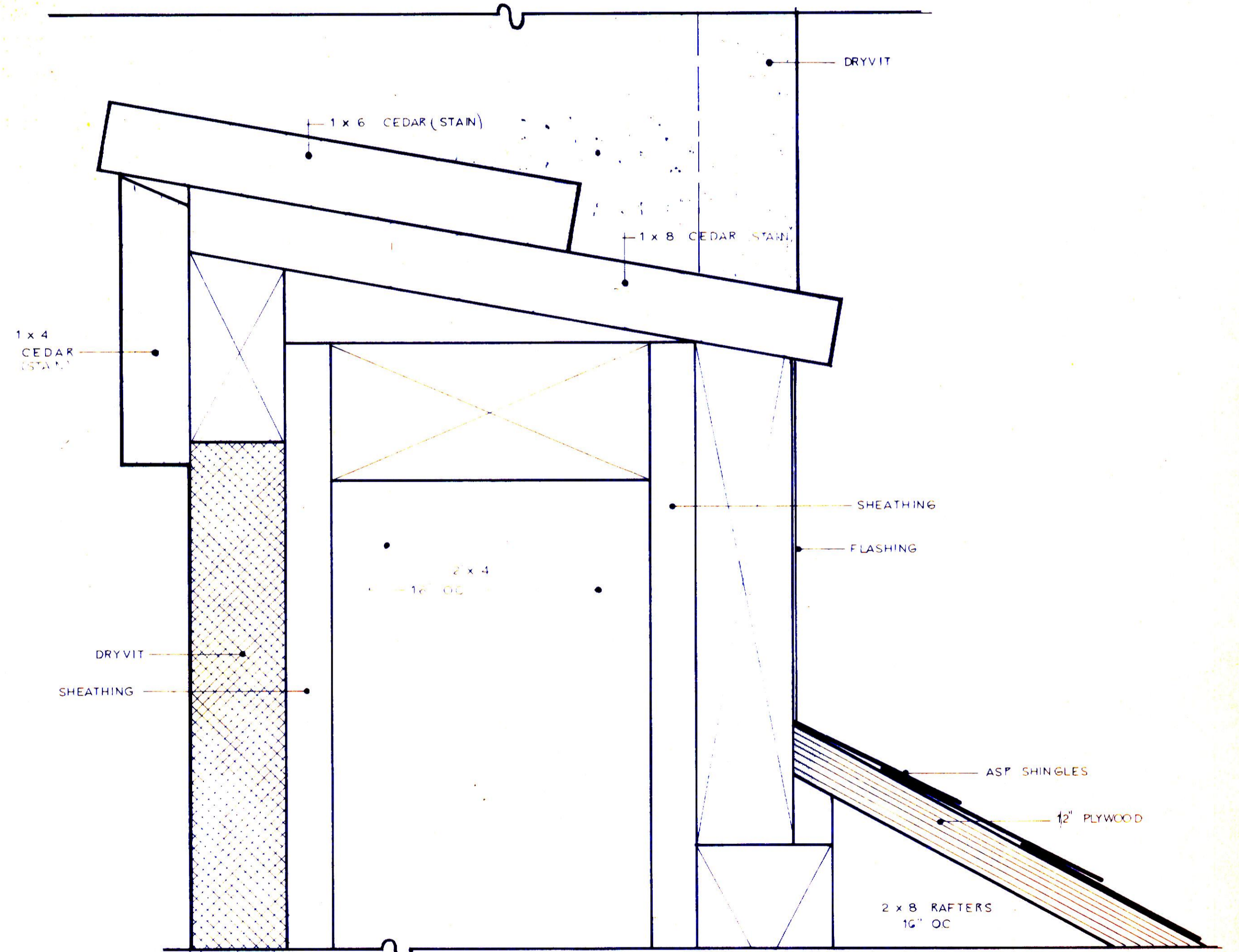
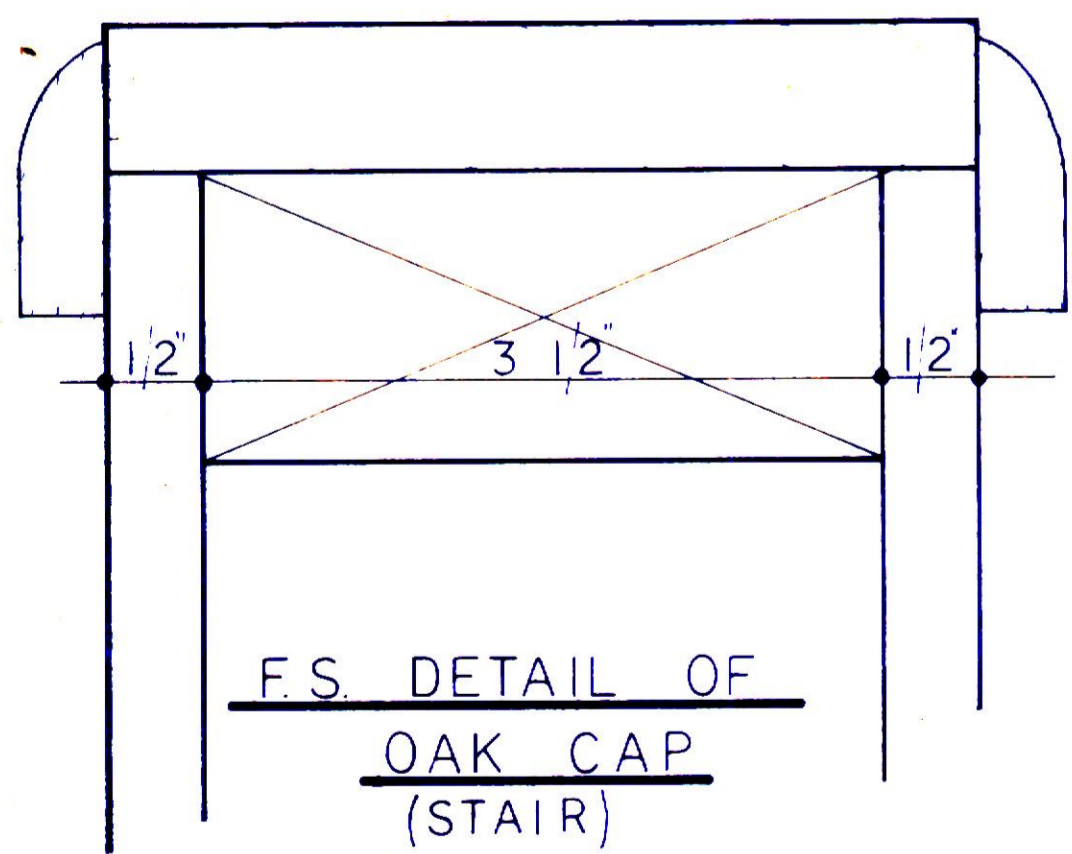


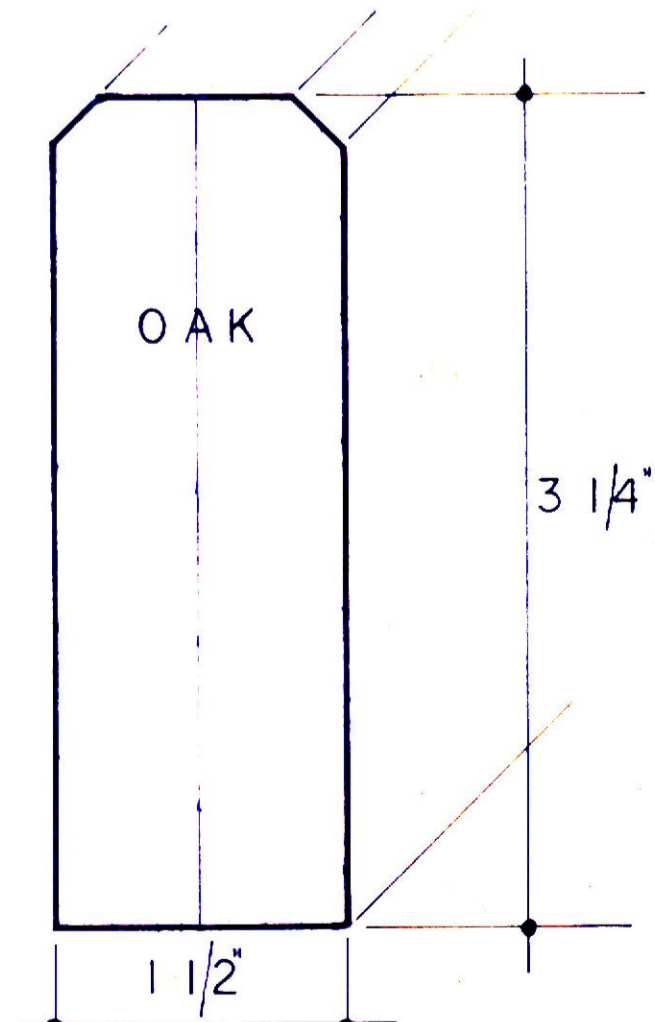
SECTION AT LINE (H)  
3'-1'-0"



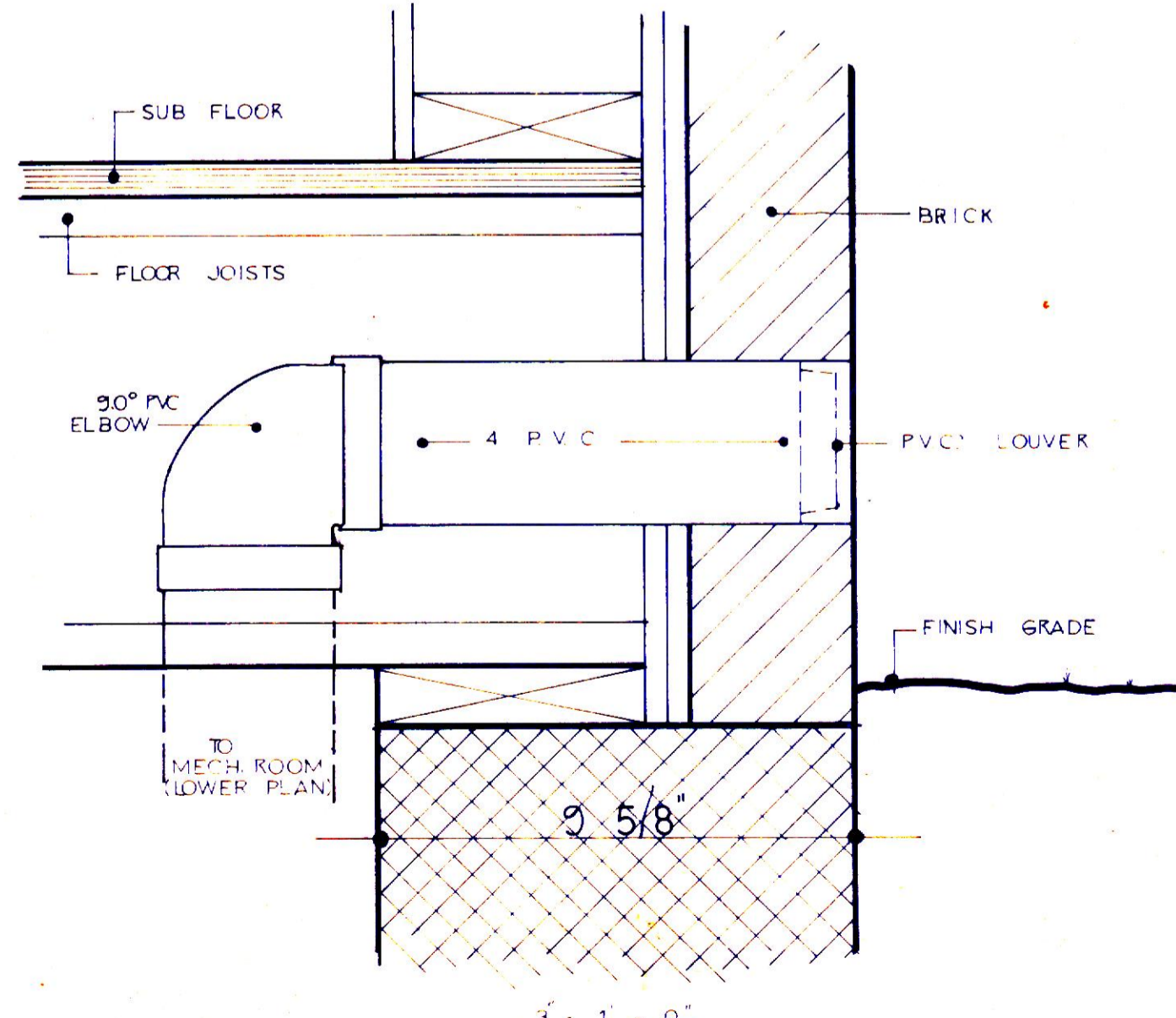
F.S. DETAIL AT (4)  
3'-1'-0"



F.S. DETAIL OF  
OAK CAP  
(STAIR)



F.S. OAK  
RAILING  
(STUDY)  
DETAIL (5)



3'-1'-0"

REVISED PRINT  
DESTROY ALL PRINTS OF PREVIOUS ISSUE

REVISED 3-27-95	OFFICE of JOHN N. PORTS 646 Colonial Avenue YORK, PENNSYLVANIA 17403 (717) 848-2774
NEW RESIDENCE FOR MR. & MRS. KEITH SHAFFER LOT 23, HERITAGE HILLS, YORK, PA	
SCALE 3/16" = 1'-0"	APPROVED BY
DATE 3-16-95	DRAWN BY J.N.P. B.D.P.
SECTIONS & DETAILS	
DRAWING NUMBER A-9	