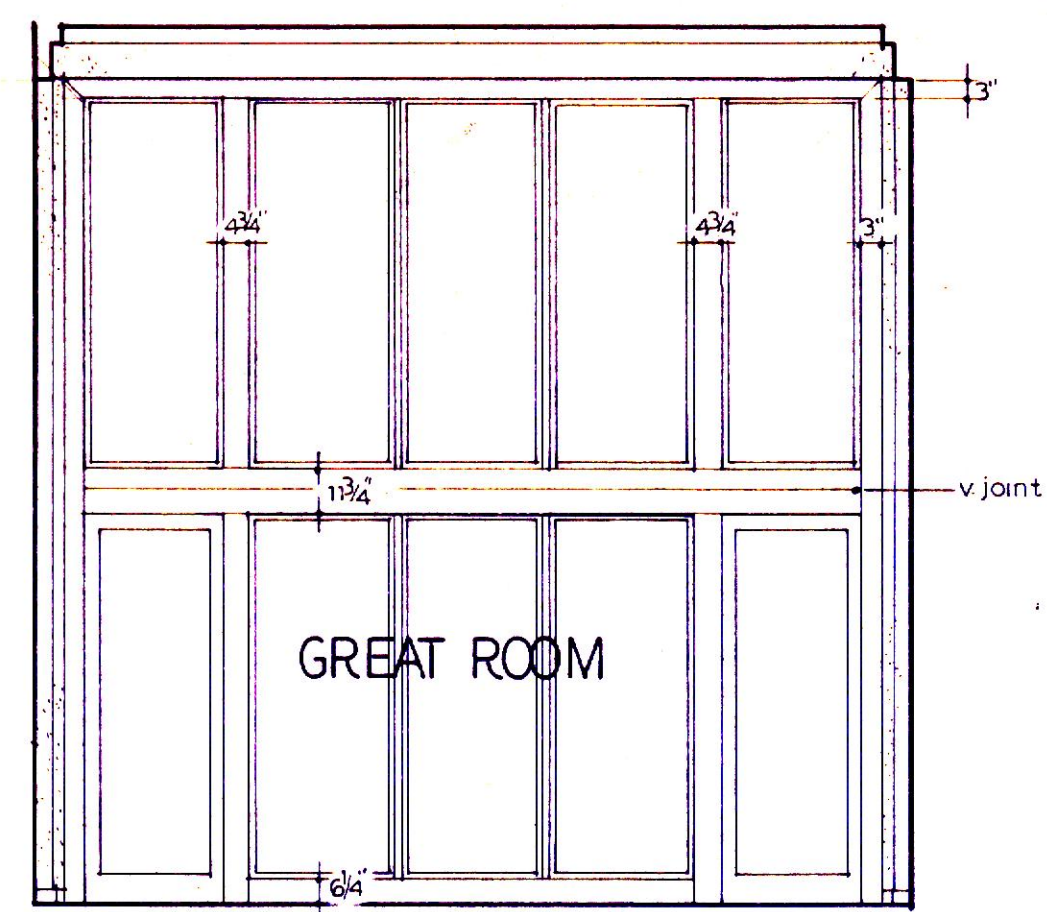
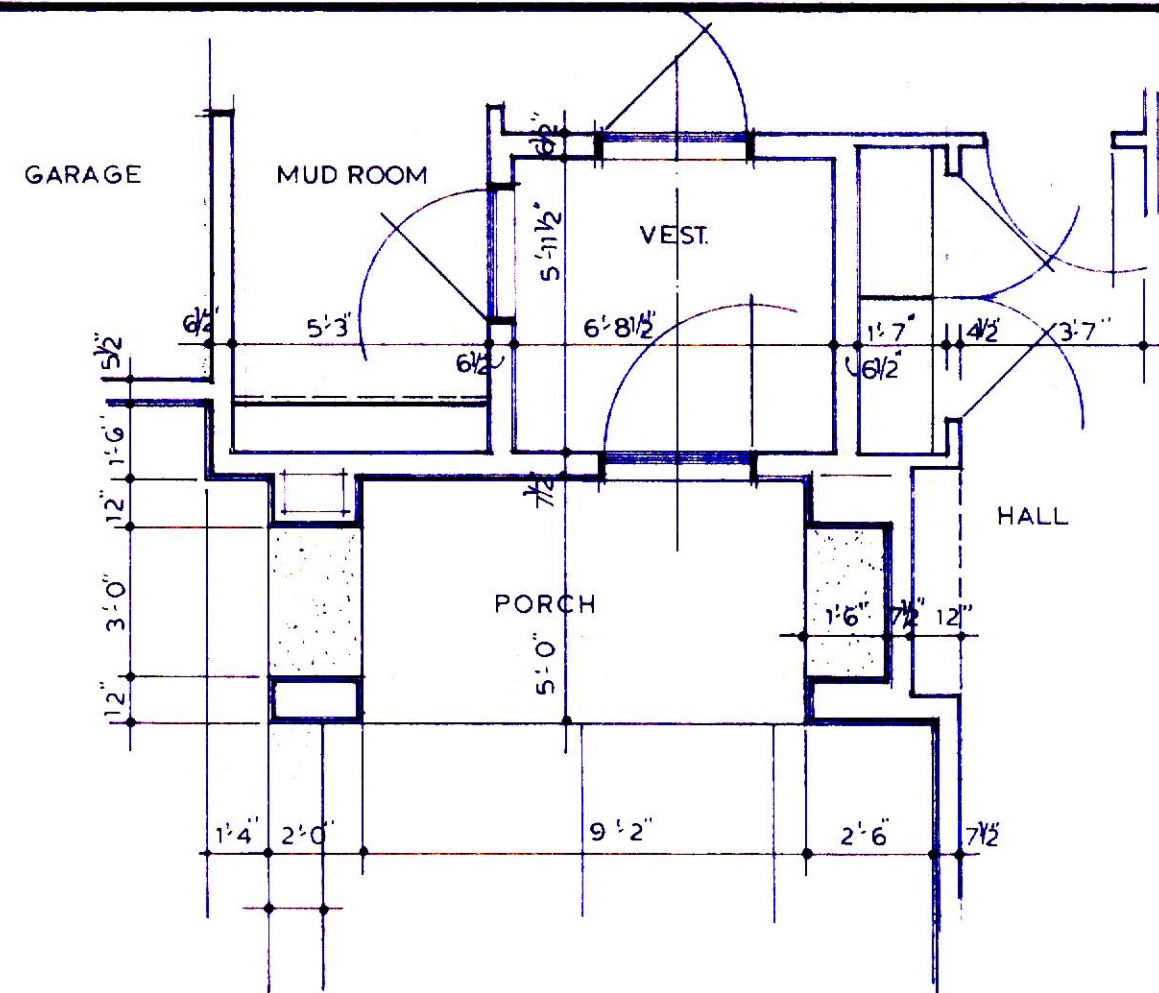


REVISED ROOF PLAN

ITEM NO.5

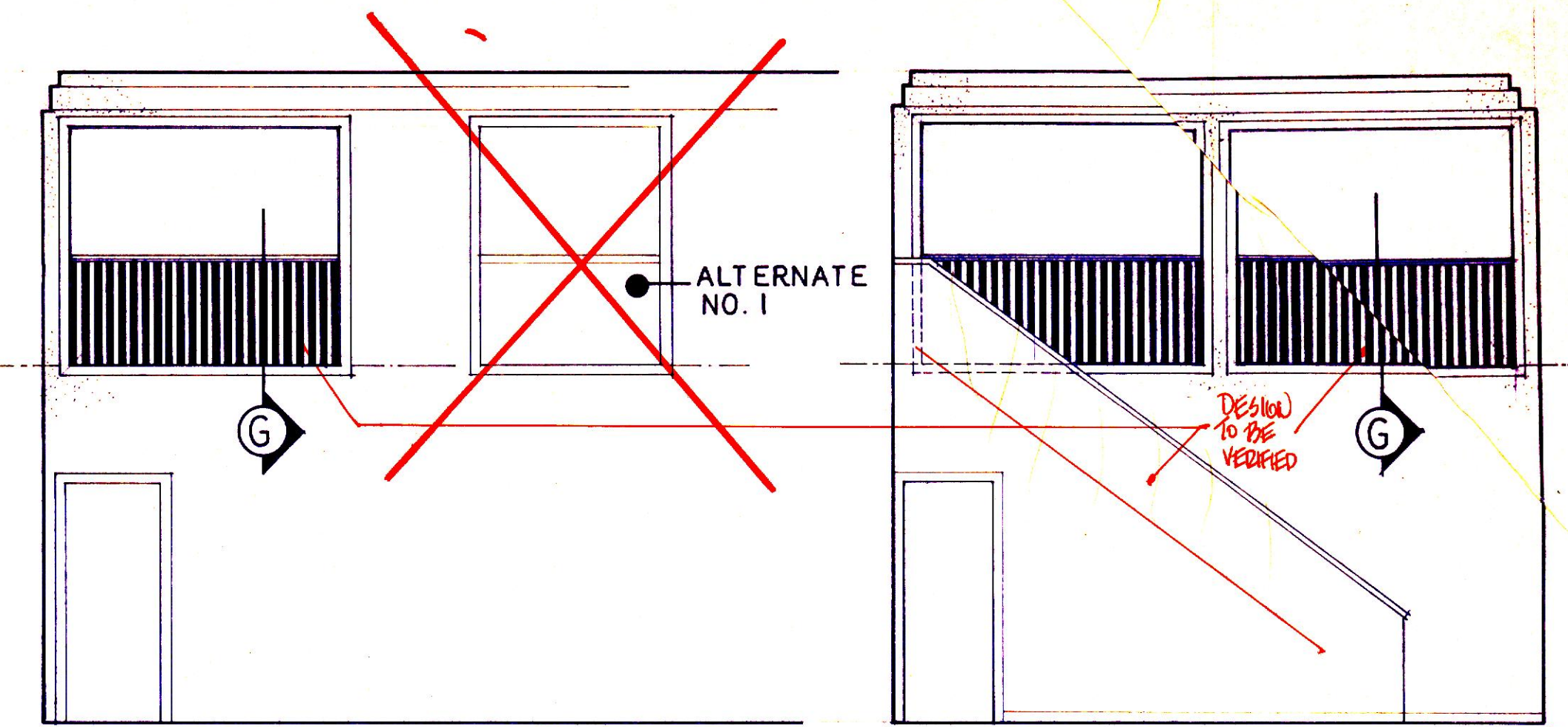


NOTE: ALL TRIM TO BE 3/4 THICK CLEAR W. PINE BOARDS - STAINED.
REVISED ELEVATION AT 17
ITEM NO.3

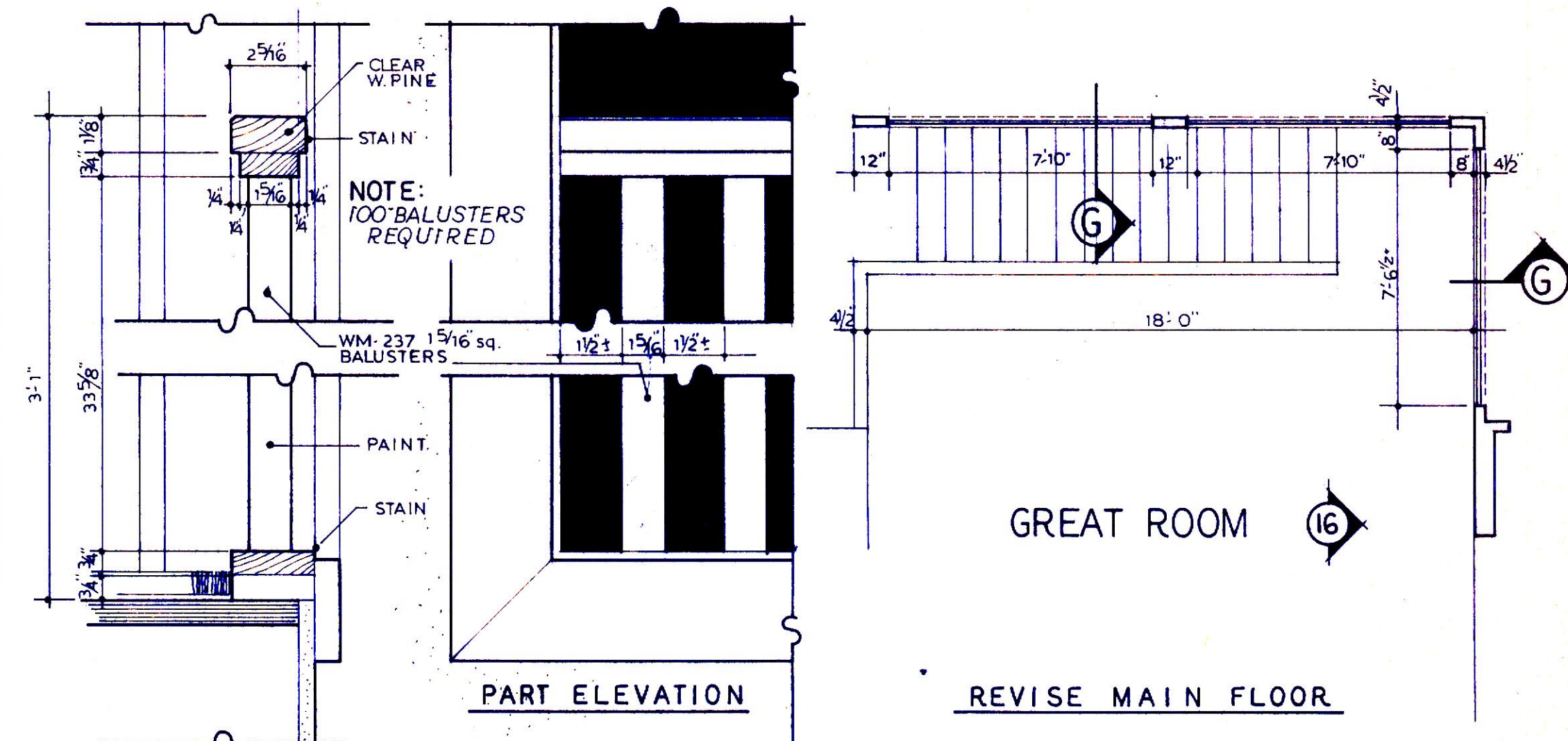


REVISED PLAN OF MAIN FLOOR ENTRANCE

ITEM NO.4



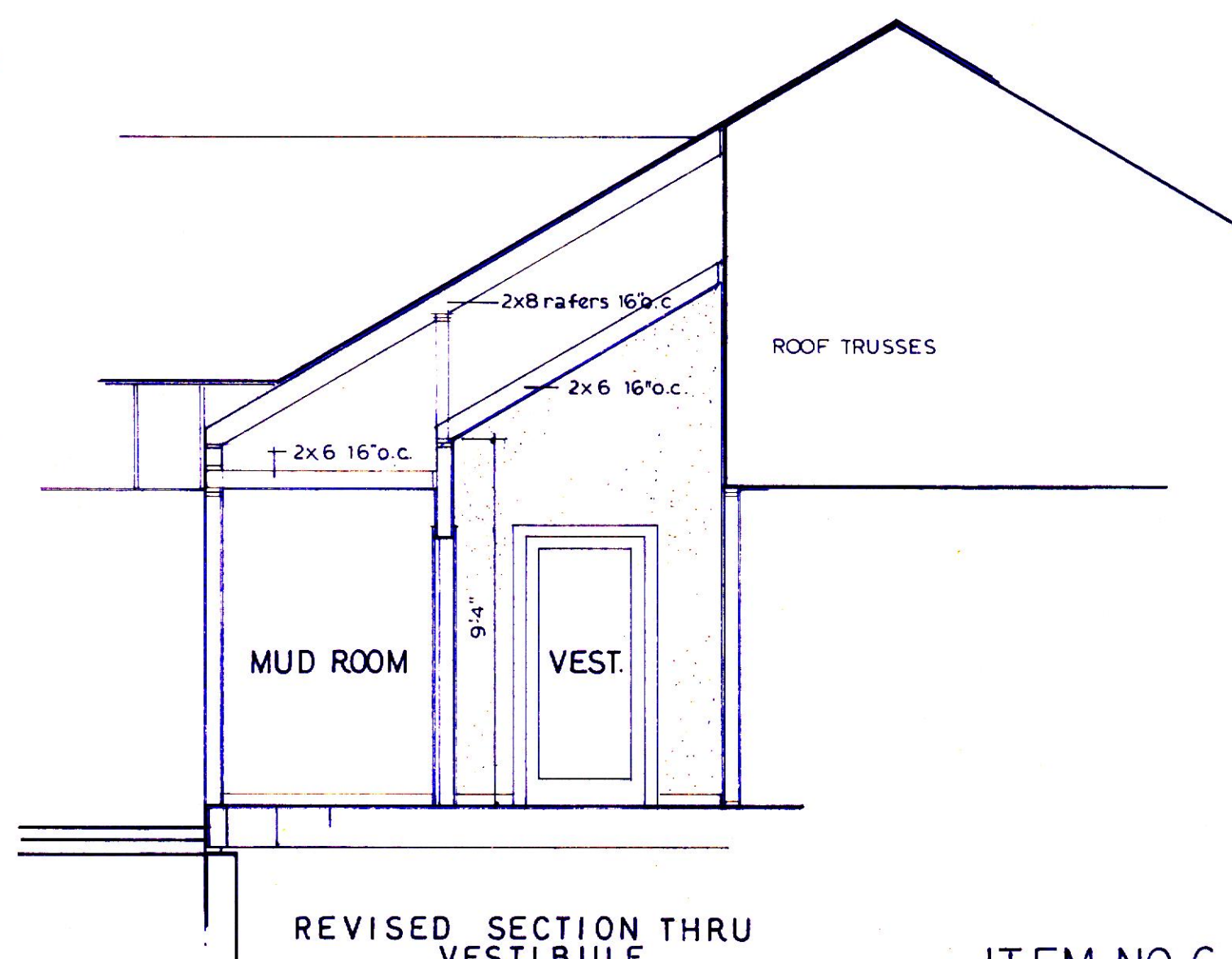
REVISED ELEVATION AT 16
REVISED ELEVATION AT SECTION E-E



SECTION AT G
SCALE 3/8" = 1'-0"

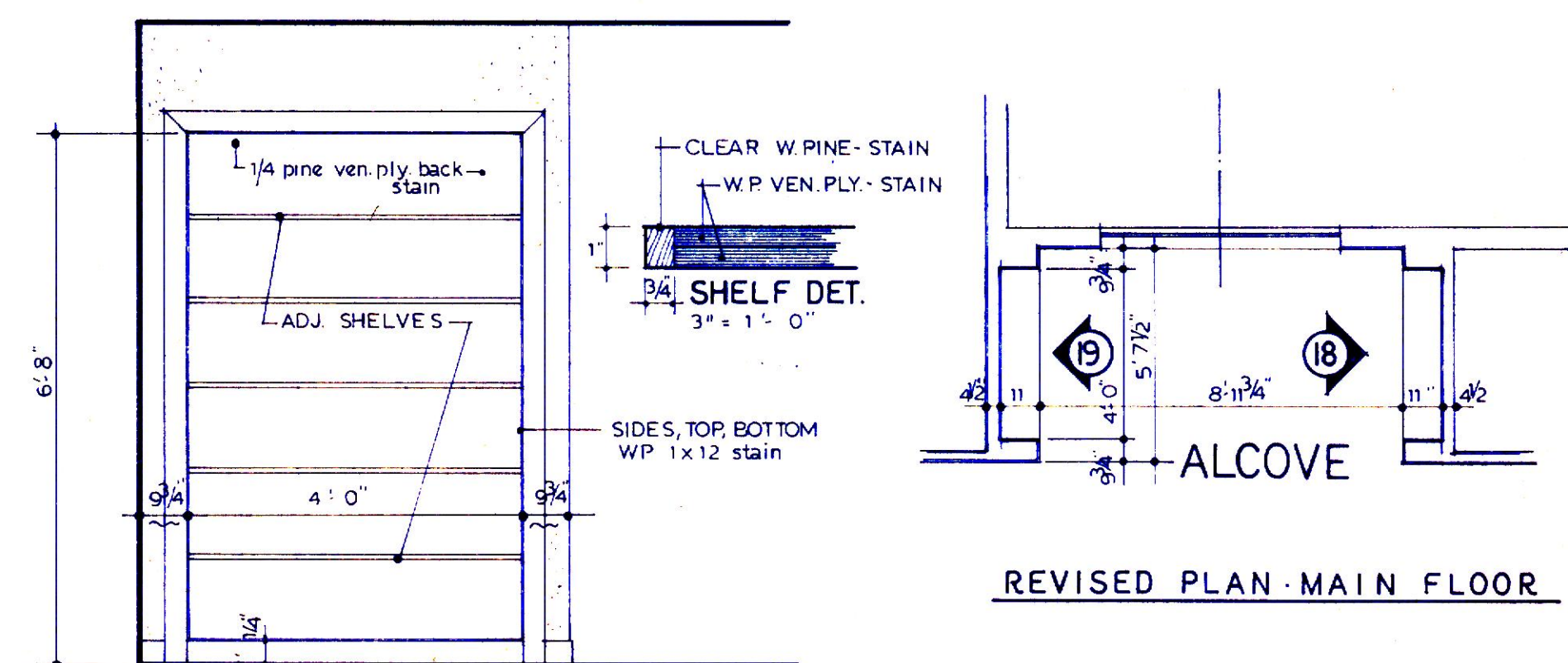
REVISE MAIN FLOOR

ITEM NO.2



REVISED SECTION THRU VESTIBULE

ITEM NO.6



ELEVATION AT 18
ELEVATION AT 19 SIMILAR

REVISED PLAN MAIN FLOOR

ITEM NO.1

OFFICE of JOHN N. PORTS
846 Colonial Avenue
YORK, PENNSYLVANIA 17403
(717) 848-2774

RESIDENCE OF
MR. & MRS. KEITH SHAFER
LOT 23, HERITAGE HILLS, YORK, PA.

SCALE: 1/4" = 1'-0" APPROVED BY: DRAWN BY: J.N.P.
DATE: 3-27-95

BULLETIN NO.1

DRAWING NUMBER A13