

**THIRD FLOOR PLAN**

SCALE 1/16" = 1' - 0"

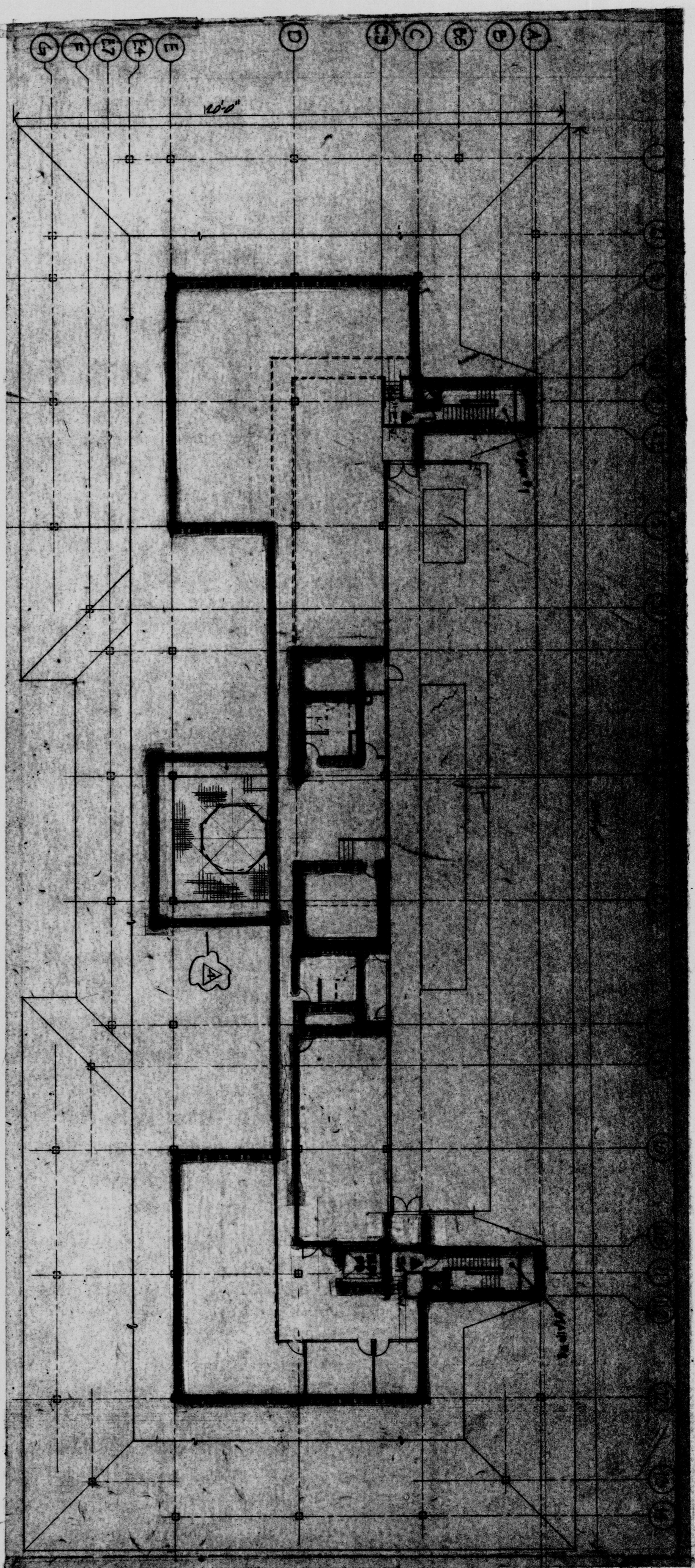
OCCUPANT LOAD (USE GROUP B)  
 29,489 G.S.F. = 100 G.S.F./OCCU. = 295 OCCU.

EGRESS COMPONENTS

DOORS:	REQUIRED	PROVIDED
BOCA - 295 OCCU X 1.5"/OCCU. = 442.5'	442.5'	66' 2 EXITS
NFPA - 295 OCCU X 2"/OCCU. = 591'	591'	66' 2 EXITS

STAIRS:

BOCA - 295 OCCU X 2"/OCCU. = 591'	591'	90' 2 STAIRS
NFPA - 295 OCCU X 3"/OCCU. = 885'	885'	90' 2 STAIRS



**MEZZANINE**

SCALE 1/16" = 1' - 0"

OCCUPANT LOAD (USE GROUP B)  
 9,360 G.S.F. = 100 G.S.F./OCCU. = 94 OCCU.

EGRESS COMPONENTS

DOORS:	REQUIRED	PROVIDED
BOCA - 94 OCCU X 1.5"/OCCU. = 141'	141'	66' 2 EXITS
NFPA - 94 OCCU X 2"/OCCU. = 188'	188'	66' 2 EXITS

STAIRS:

BOCA - 94 OCCU X 2"/OCCU. = 188'	188'	90' 2 STAIRS
NFPA - 94 OCCU X 3"/OCCU. = 282'	282'	90' 2 STAIRS

**LEGEND**

- 2-HOUR RATED
- 1-HOUR RATED
- NON-RATED, EXTEND STUPE & G.W.S. TO DECK ABOVE.

**NOTES:**  
 1. FIRE-RATING CONTRACTOR TO CALCULATE PROPER THICKNESS OF SPRINKLER FIRE-RATING TO MEET ALL DESIGN REQUIREMENTS.  
 2. SEE ARCH. DRAWING 98 5401 A-1

Henry Adams, Inc.  
 Mech./Elect. Engineers

Falsant Associates, Inc.  
 Structural Engineers

**Gaudreau, Inc.**  
 Architects Planners Engineers  
 Baltimore

810 Light Street Baltimore Maryland 21201

**CORPORATE HEADQUARTERS**  
**McCormick & Company**  
 LOVETON BUSINESS CENTER  
 BALTIMORE COUNTY, MARYLAND

REVISIONS		FIRE SEPARATION PLAN	
NO.	DATE	DESCRIPTION	
1	7.31.98	R.E.V./S.E.D.	

PROJ. NO.	8914.10	DWG. NO.	A-3
DATE	8914.10		
	94-11-200		

BID PACK # 3