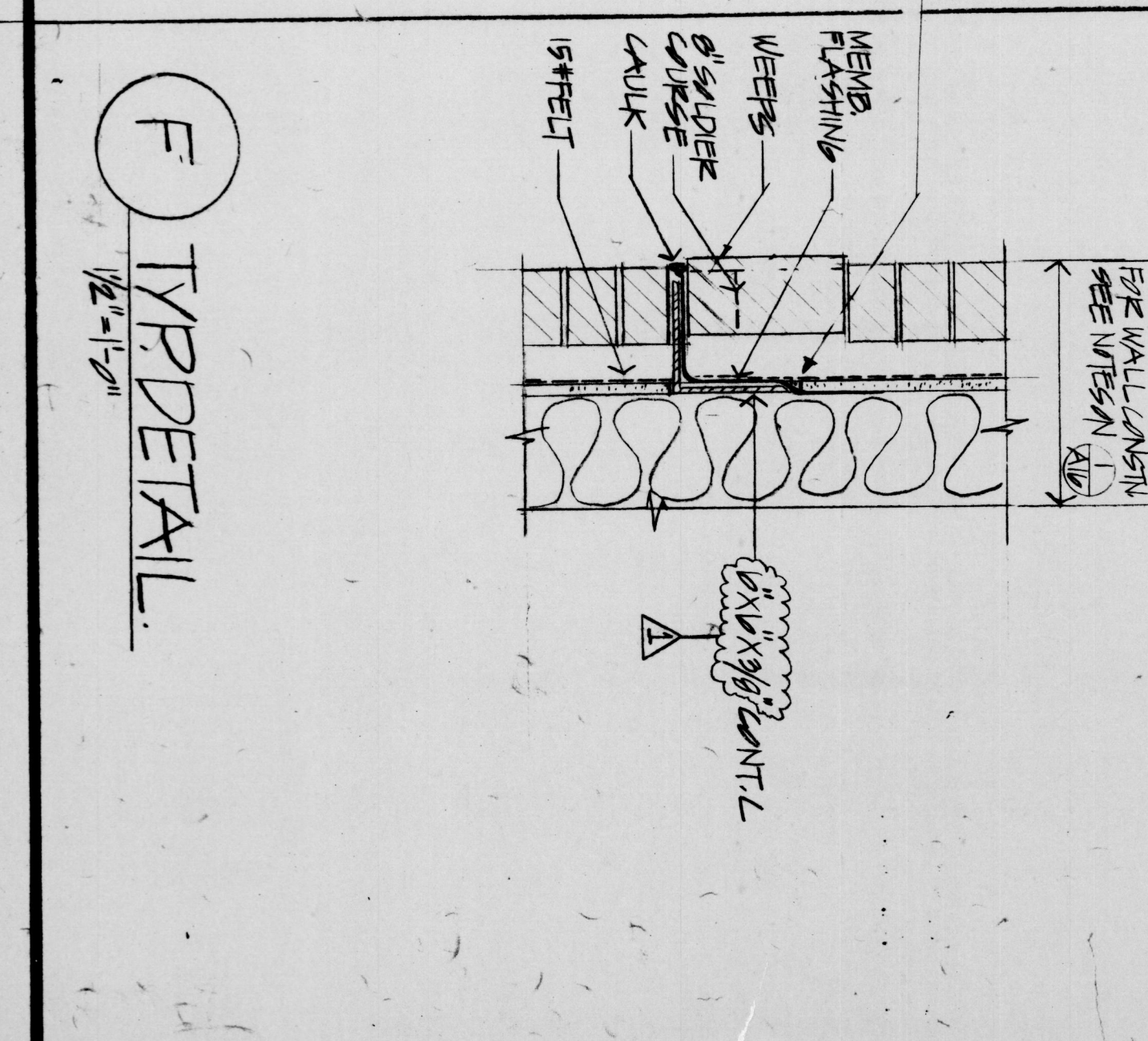
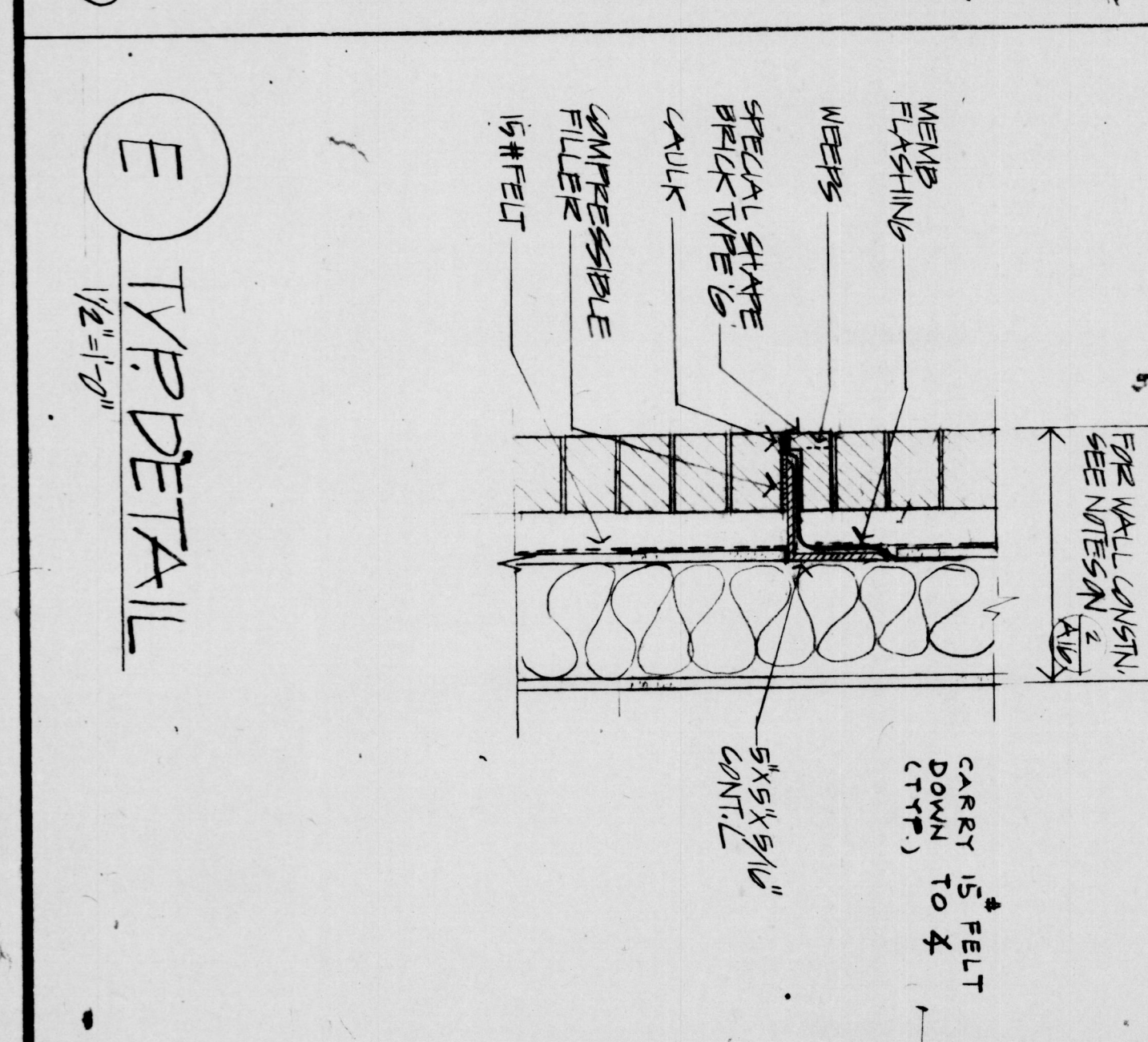
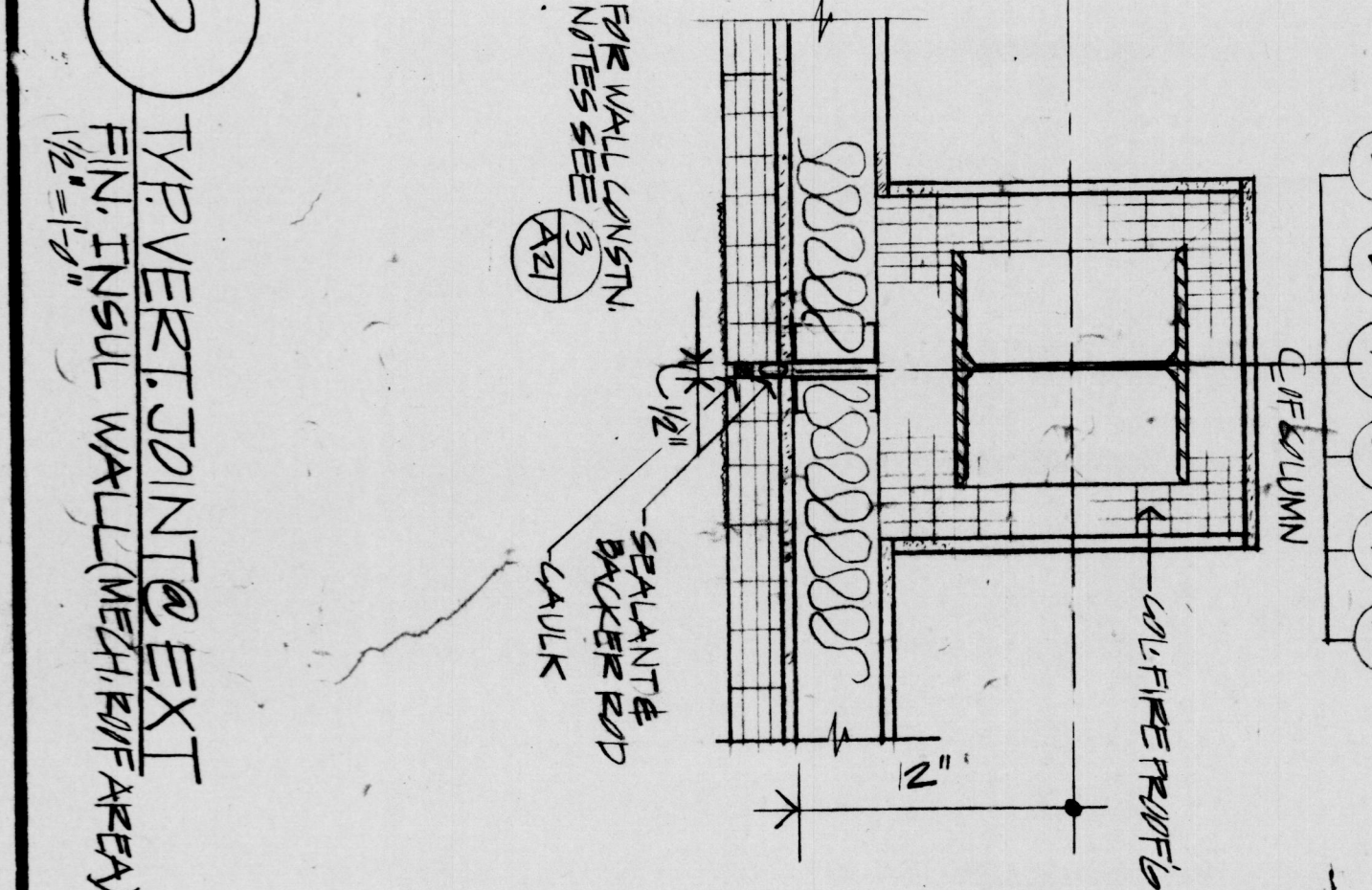
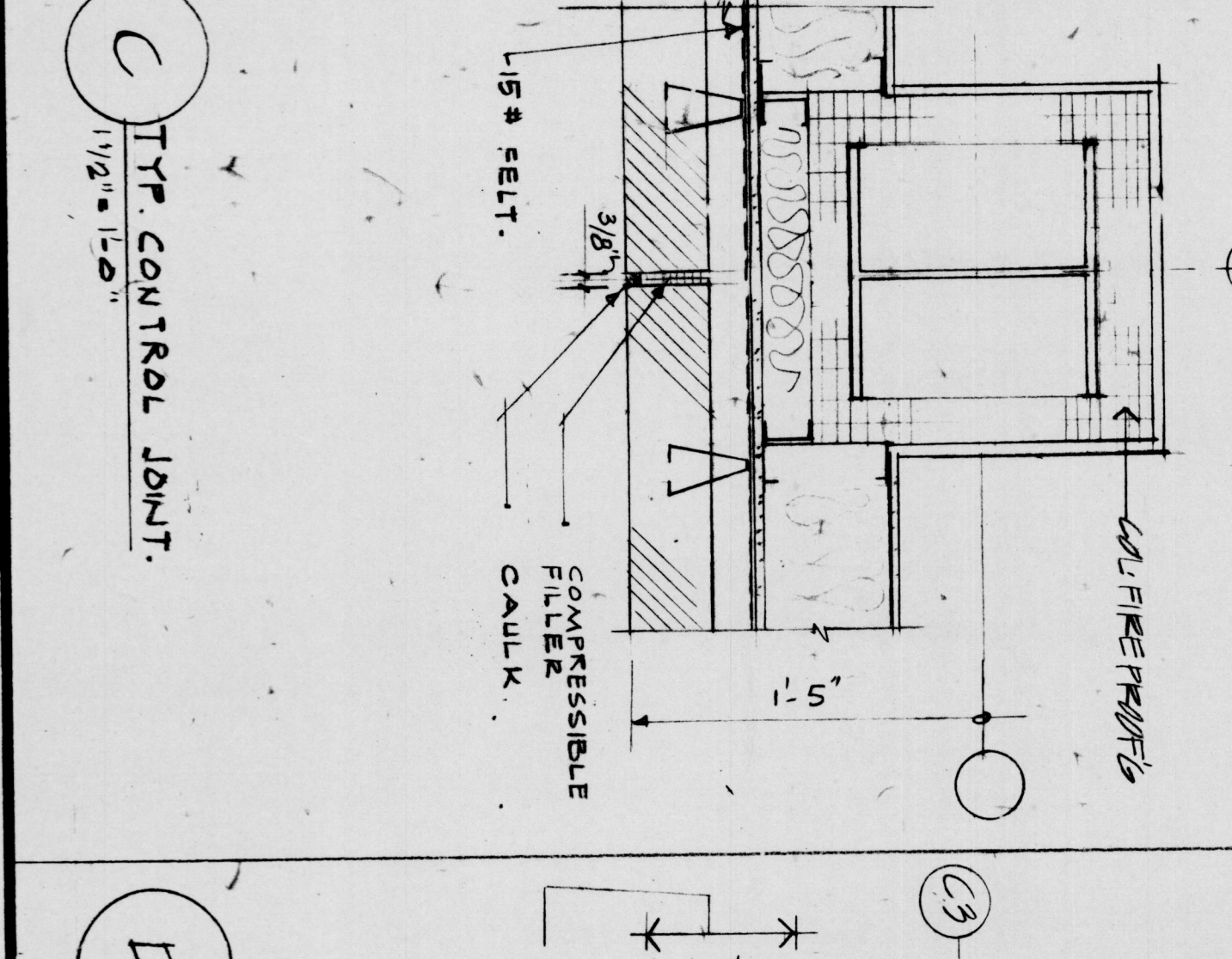
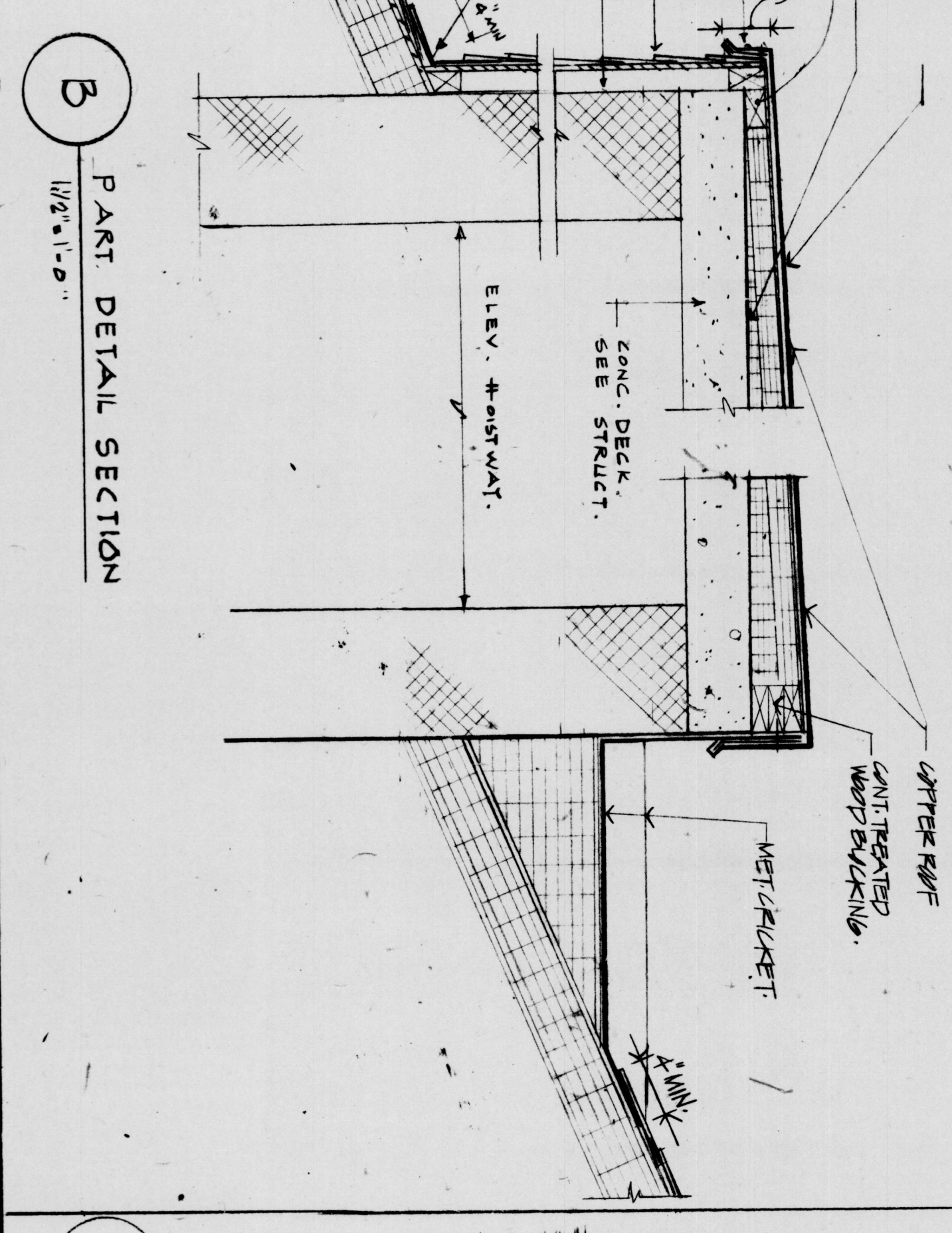
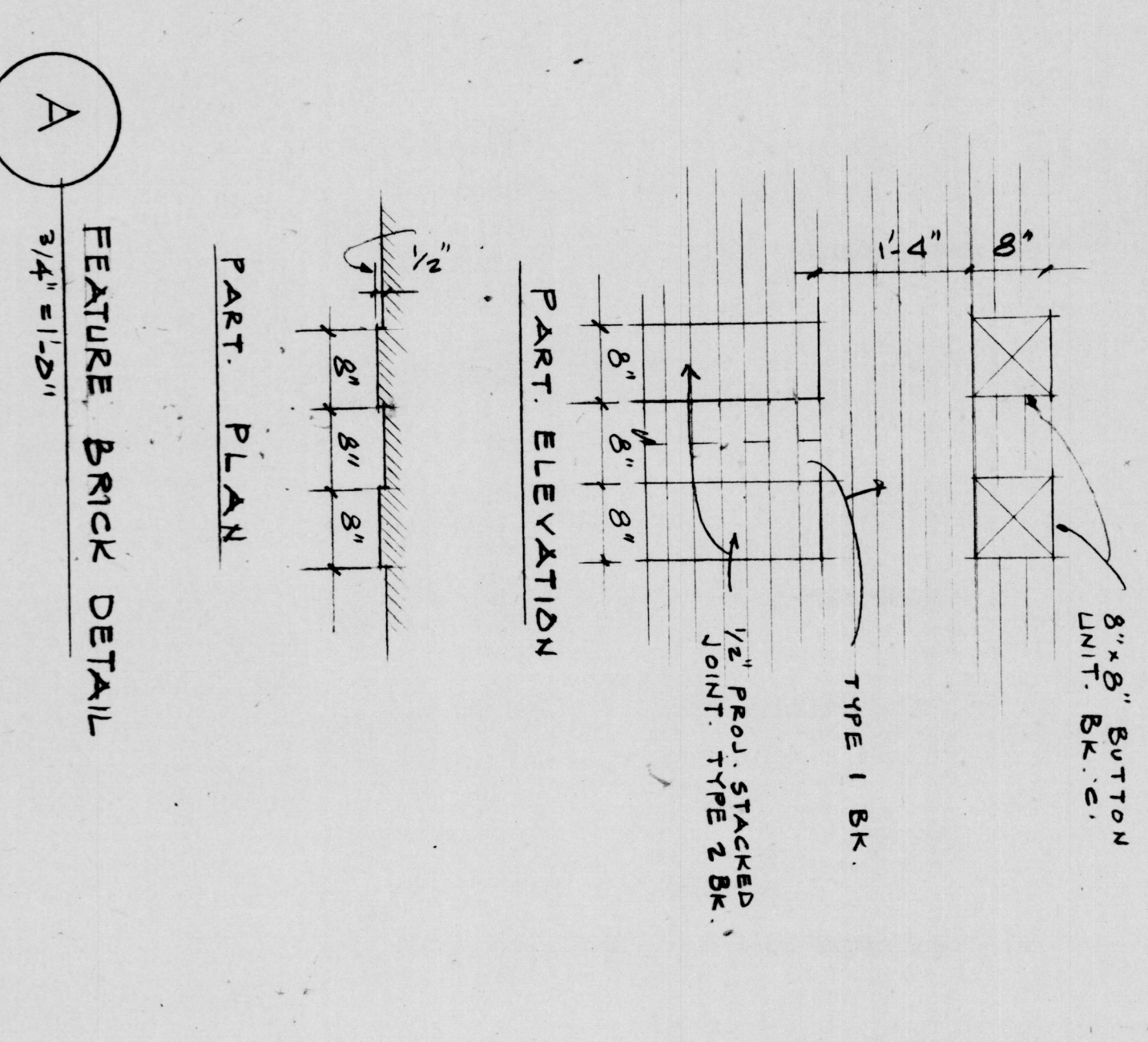


**1 NORTH ELEVATION**  
1/8" = 1'-0"



Henry Adams, Inc.  
Mech./Elect. Engineers

Faisant Associates, Inc.  
Structural Engineers

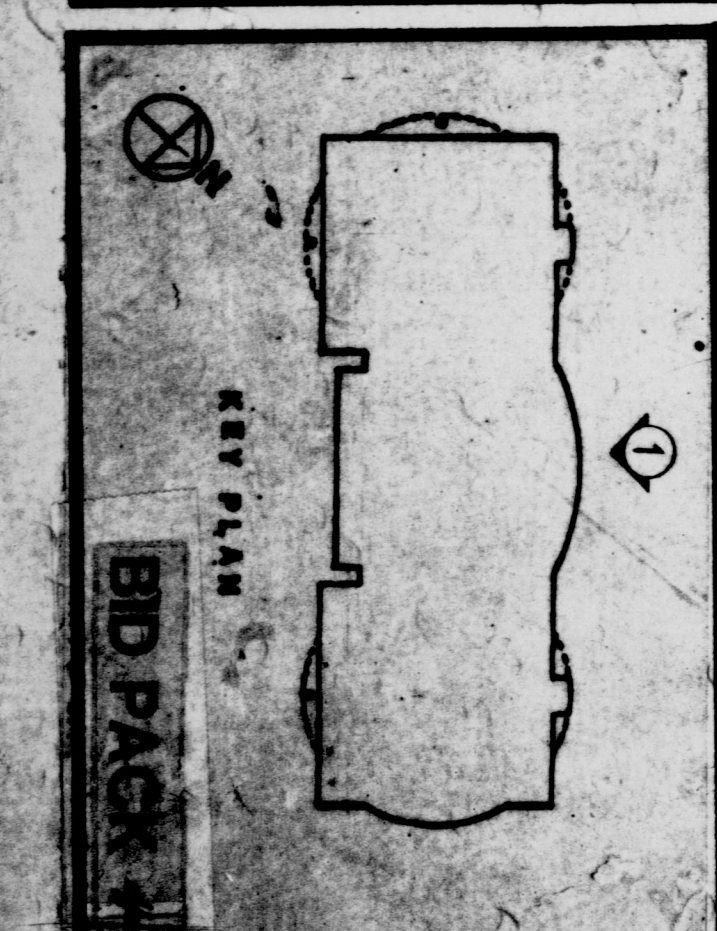
Gaudreau, Inc.  
Architectural Engineers

Baltimore  
810 Light Street, Baltimore, Maryland 21201

**CORPORATE HEADQUARTERS**

**McCormick & Company**

LOVETON BUSINESS CENTER  
BALTIMORE COUNTY, MARYLAND



REVISIONS		BUILDING ELEVATIONS & DETAILS	
NO.	DATE	DESCRIPTION	DWG. NO.
1	11-17-88	PREPARED BY ARCHITECT	8914.10
2	11-17-88	REVISION	8914.10
3	11-17-88	REVISION	8914.10
4	11-17-88	REVISION	8914.10
5	11-17-88	REVISION	8914.10