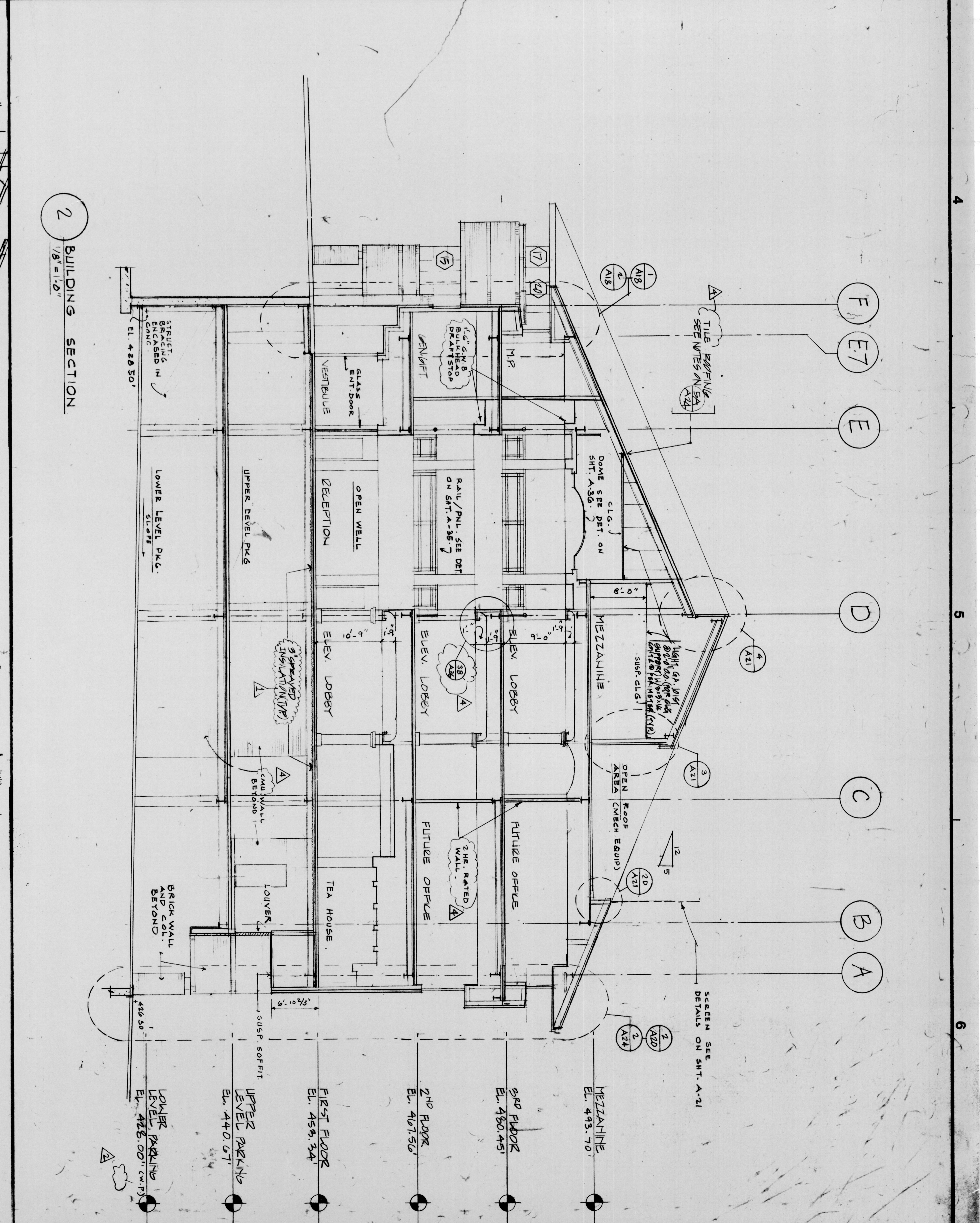
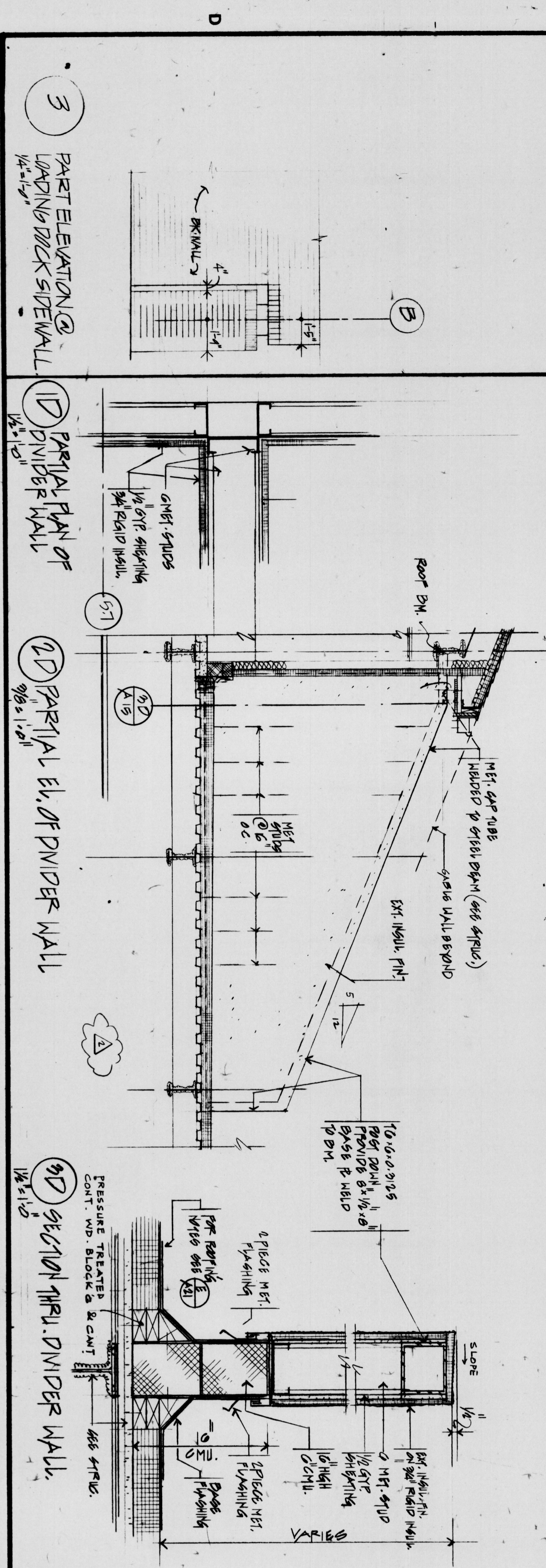


1 BUILDING SECTION
1/8" = 1'-0"



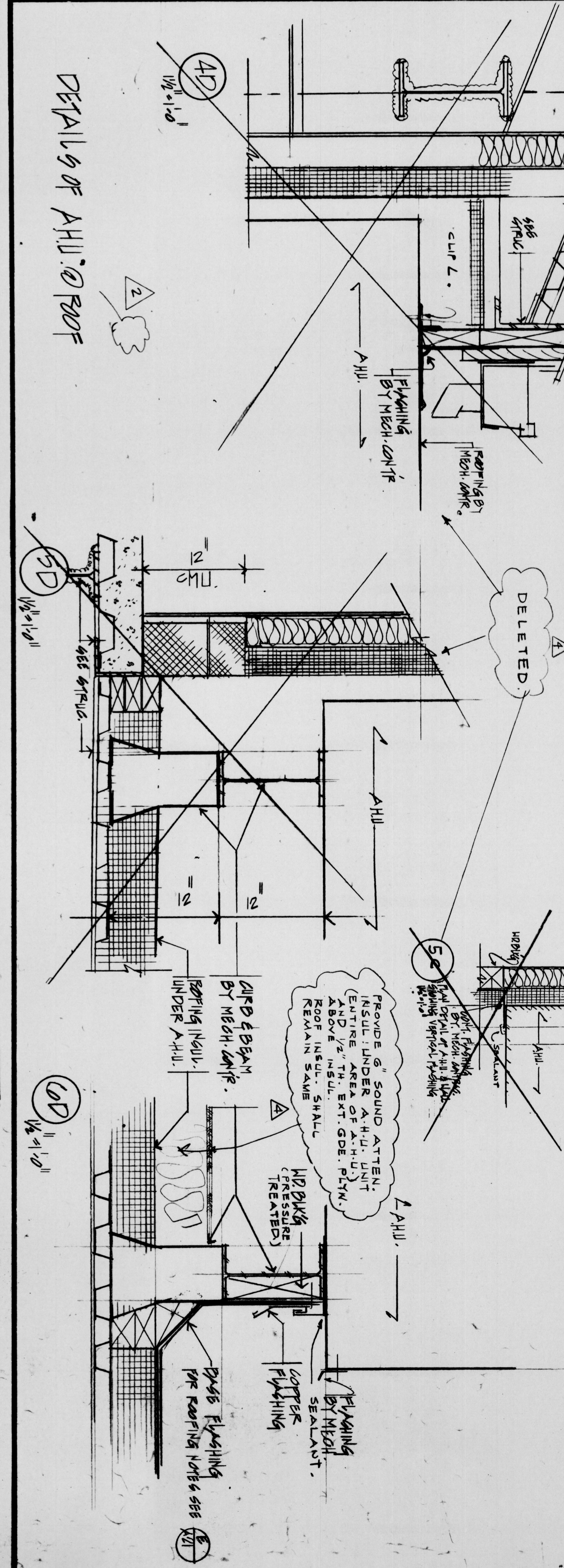
2 BUILDING SECTION
1/8" = 1'-0"



3 PART ELEVATION OF LANDING BRICK SIDEWALL
1/4" = 1'-0"

1 PARTIAL PLAN OF DIVIDER WALL
1/4" = 1'-0"

2 PARTIAL EL. OF DIVIDER WALL
1/4" = 1'-0"



DETAILS OF AHU ROOF
1/4" = 1'-0"

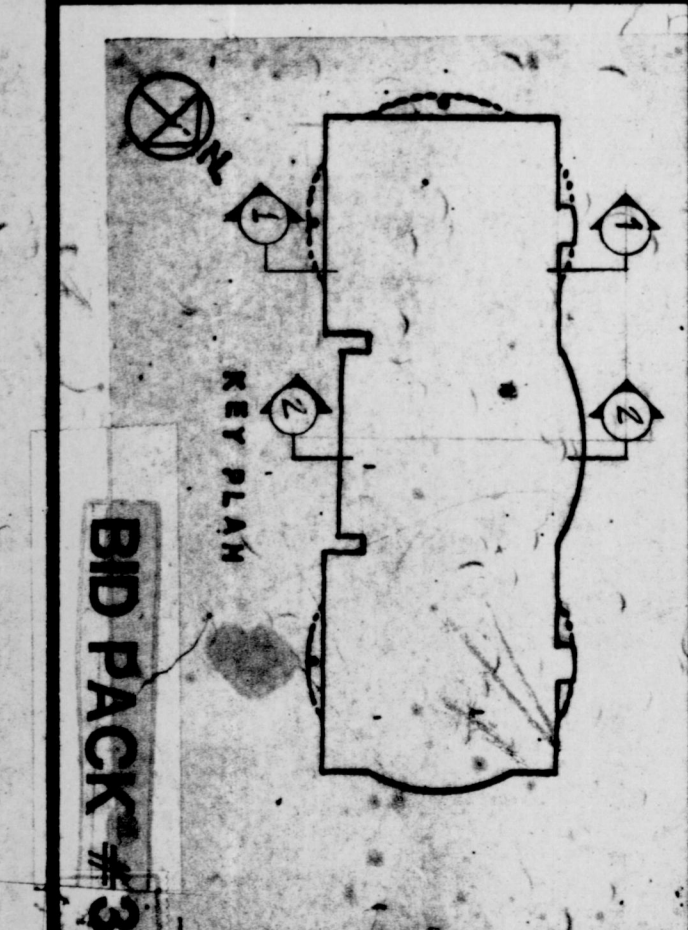
Faisant Associates, Inc.
Structural Engineers

Henry Adams, Inc.
Mech./Elect. Engineers

Gaudreau, Inc.
Architectural Engineers

Baltimore
810 Light Street Baltimore Maryland 21201

CORPORATE HEADQUARTERS
McCormick & Company
LOVETON BUSINESS CENTER
BALTIMORE COUNTY, MARYLAND



REVISIONS	
NO.	DATE DESCRIPTION
1	11-17-77 PRE-APPROVAL (BY M.A.A.)
2	4-11-78 R.E. VISIT
3	7-27-78 PER ARCHIT. (BY M.A.A.)
4	1-31-80 REVISED

BUILDING SECTIONS	
PROJ. NO.	DWG. NO.
801A10	A-15