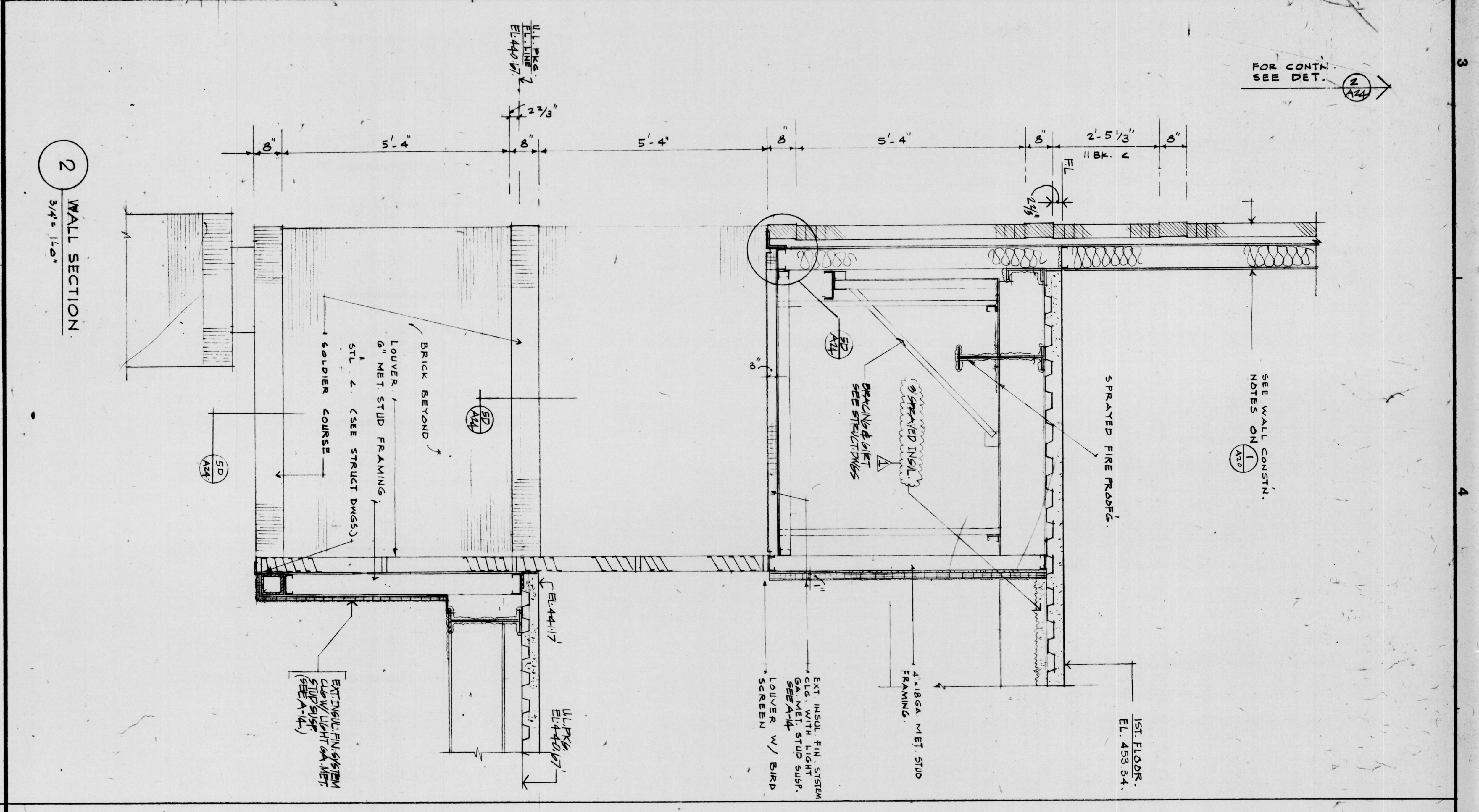
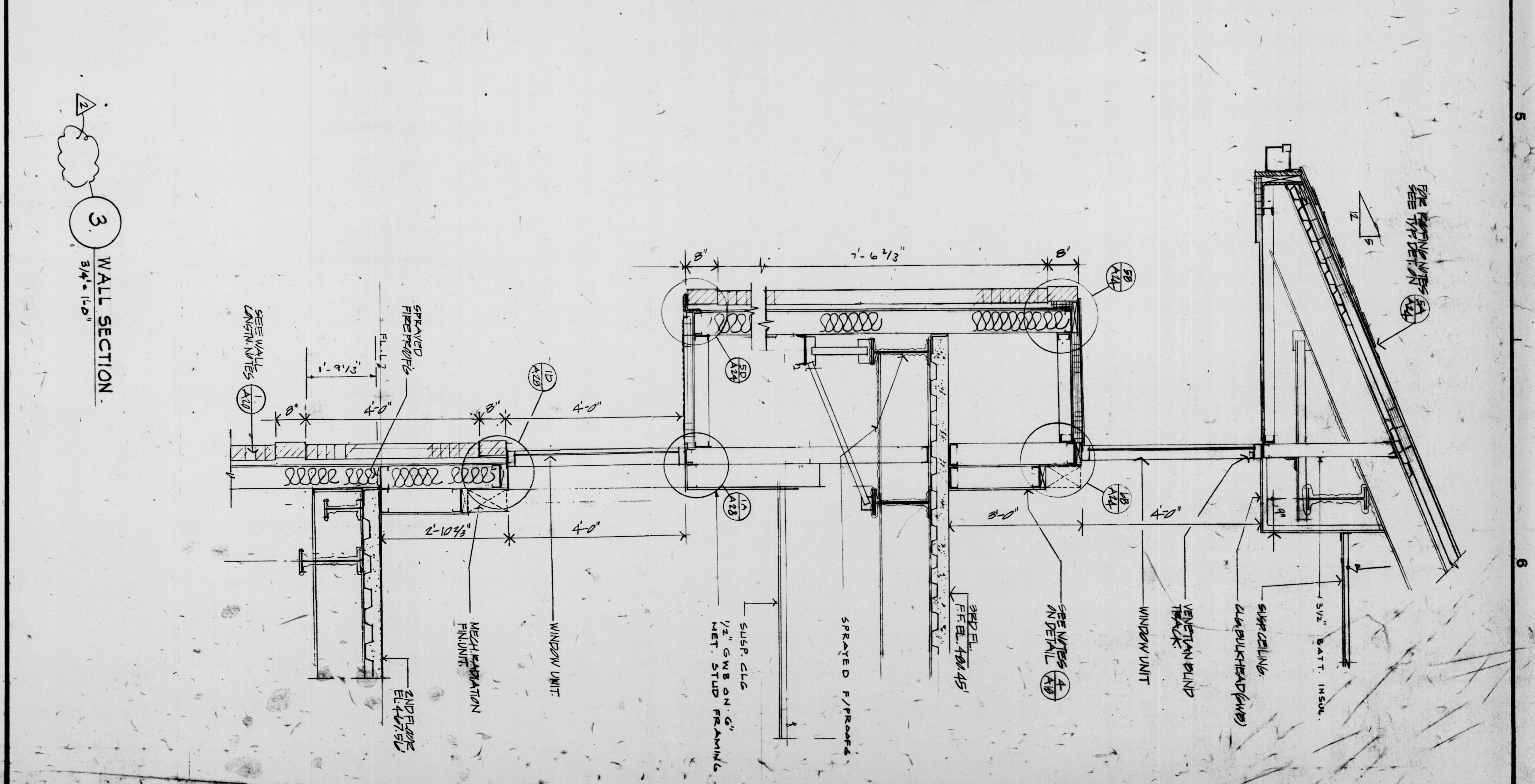


1 WALL SECTION
3/4" = 1'-0"



2 WALL SECTION
3/4" = 1'-0"



3 WALL SECTION
3/4" = 1'-0"

- NOTES**
1. THE STRUCT. STEEL AND REINFORCING SEE STRUCT. DRAWINGS.
 2. THE REINFORCING SEE MECH. DIV. IN OTHER DRAWINGS.
 3. WALL FINISHES:
 4. INTER. FINISHES:
 5. EXTER. FINISHES:
 6. SEE WALL CONSTN. NOTES ON A-20
 7. SEE WALL CONSTN. NOTES ON A-20
 8. SEE WALL CONSTN. NOTES ON A-20
 9. SEE WALL CONSTN. NOTES ON A-20
 10. SEE WALL CONSTN. NOTES ON A-20
 11. SEE WALL CONSTN. NOTES ON A-20
 12. SEE WALL CONSTN. NOTES ON A-20
 13. SEE WALL CONSTN. NOTES ON A-20
 14. SEE WALL CONSTN. NOTES ON A-20
 15. SEE WALL CONSTN. NOTES ON A-20
 16. SEE WALL CONSTN. NOTES ON A-20
 17. SEE WALL CONSTN. NOTES ON A-20
 18. SEE WALL CONSTN. NOTES ON A-20
 19. SEE WALL CONSTN. NOTES ON A-20
 20. SEE WALL CONSTN. NOTES ON A-20

Henry Adams, Inc.
Mech./Elect. Engineers

Faisant Associates, Inc.
Structural Engineers

Gaudreau, Inc.
Architects/Planners/Engineers

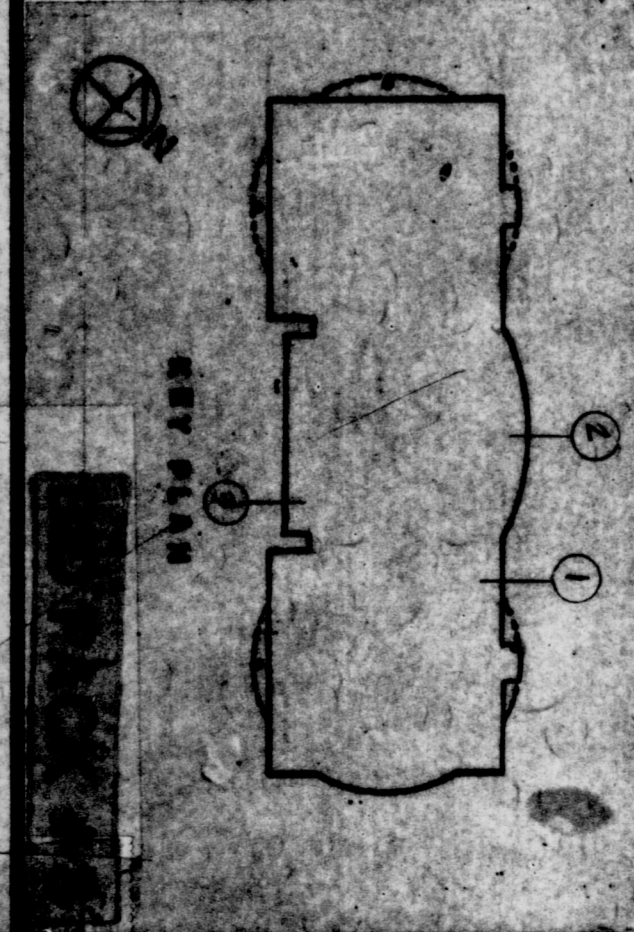
Baltimore

810 Light Street, Baltimore, Maryland 21202

CORPORATE HEADQUARTERS

McCormick & Company

LOVETON BUSINESS CENTER
BALTIMORE COUNTY, MARYLAND



REVISIONS		WALL SECTIONS	
NO.	DATE	DESCRIPTION	DATE
1	11-27-90	REVISED PER ARCHITECT'S COMMENTS	11-27-90
2	12-11-90	REVISED PER ARCHITECT'S COMMENTS	12-11-90
3	1-15-91	REVISED PER ARCHITECT'S COMMENTS	1-15-91
4	2-12-91	REVISED PER ARCHITECT'S COMMENTS	2-12-91
5	3-19-91	REVISED PER ARCHITECT'S COMMENTS	3-19-91
6	4-16-91	REVISED PER ARCHITECT'S COMMENTS	4-16-91
7	5-13-91	REVISED PER ARCHITECT'S COMMENTS	5-13-91
8	6-10-91	REVISED PER ARCHITECT'S COMMENTS	6-10-91
9	7-8-91	REVISED PER ARCHITECT'S COMMENTS	7-8-91
10	8-5-91	REVISED PER ARCHITECT'S COMMENTS	8-5-91
11	9-2-91	REVISED PER ARCHITECT'S COMMENTS	9-2-91
12	9-30-91	REVISED PER ARCHITECT'S COMMENTS	9-30-91
13	10-28-91	REVISED PER ARCHITECT'S COMMENTS	10-28-91
14	11-25-91	REVISED PER ARCHITECT'S COMMENTS	11-25-91
15	12-23-91	REVISED PER ARCHITECT'S COMMENTS	12-23-91
16	1-20-92	REVISED PER ARCHITECT'S COMMENTS	1-20-92
17	2-17-92	REVISED PER ARCHITECT'S COMMENTS	2-17-92
18	3-14-92	REVISED PER ARCHITECT'S COMMENTS	3-14-92
19	4-11-92	REVISED PER ARCHITECT'S COMMENTS	4-11-92
20	5-9-92	REVISED PER ARCHITECT'S COMMENTS	5-9-92