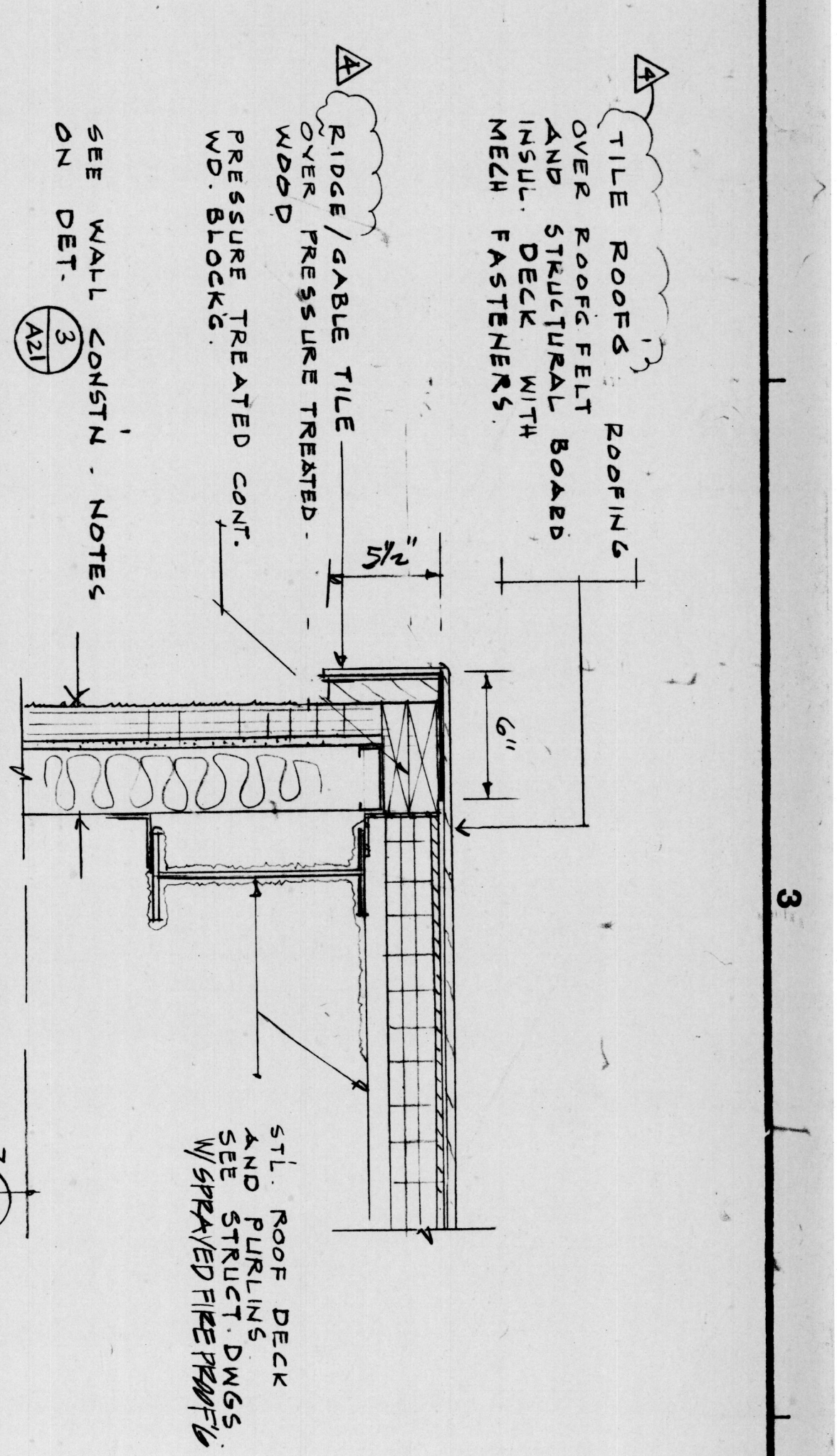
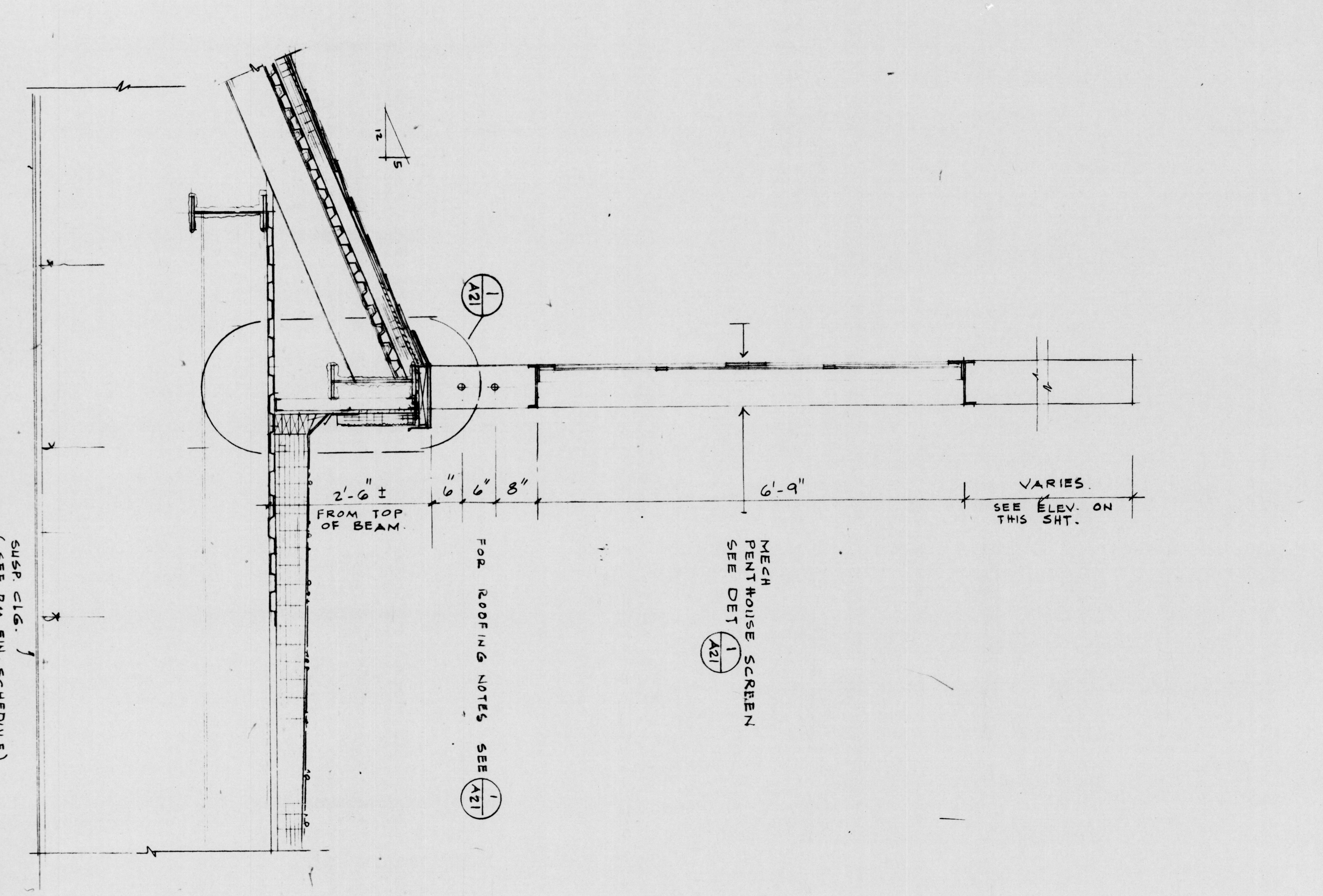


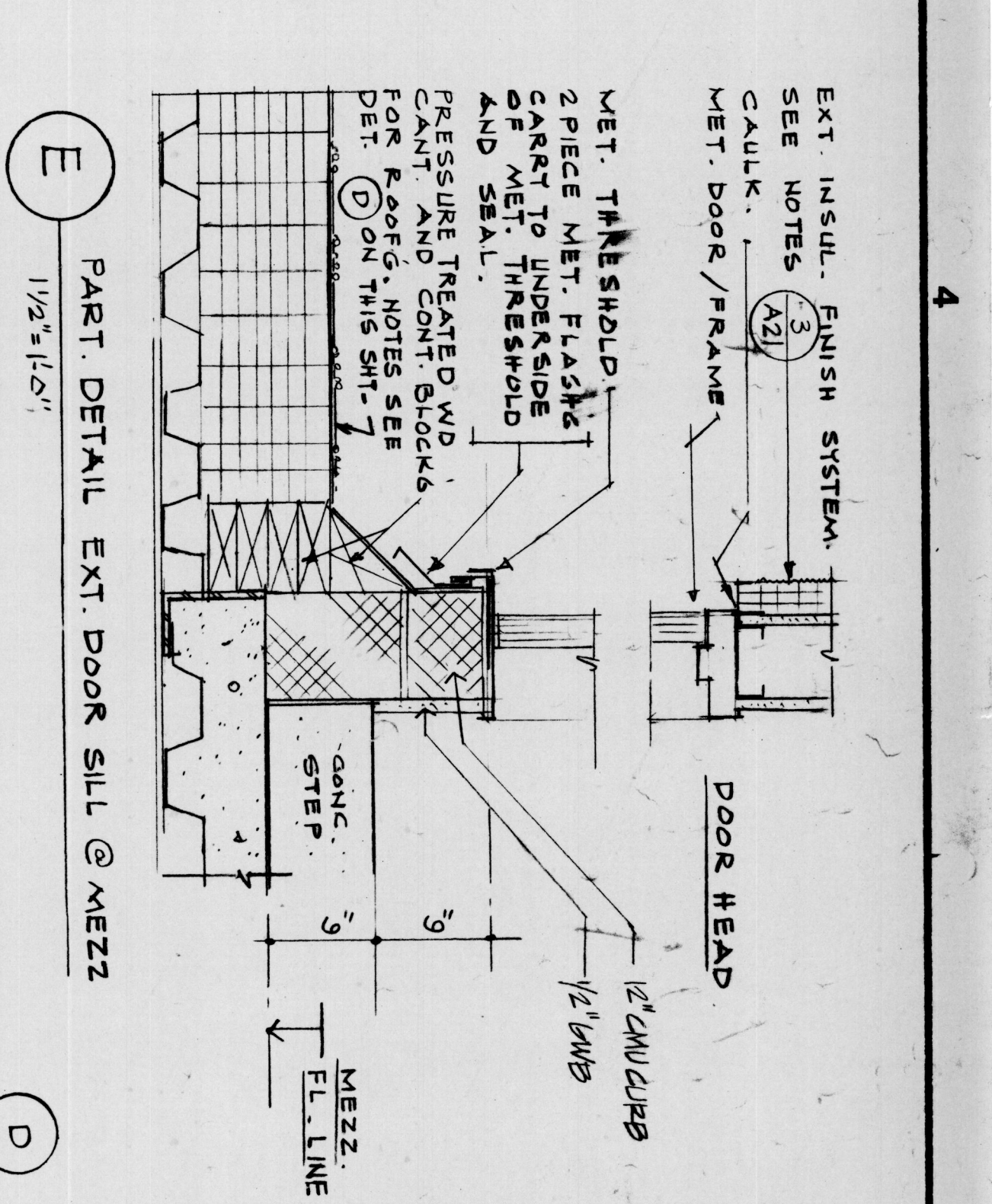
1 SCREEN DETAILS AT MECH. ROOF AREA.



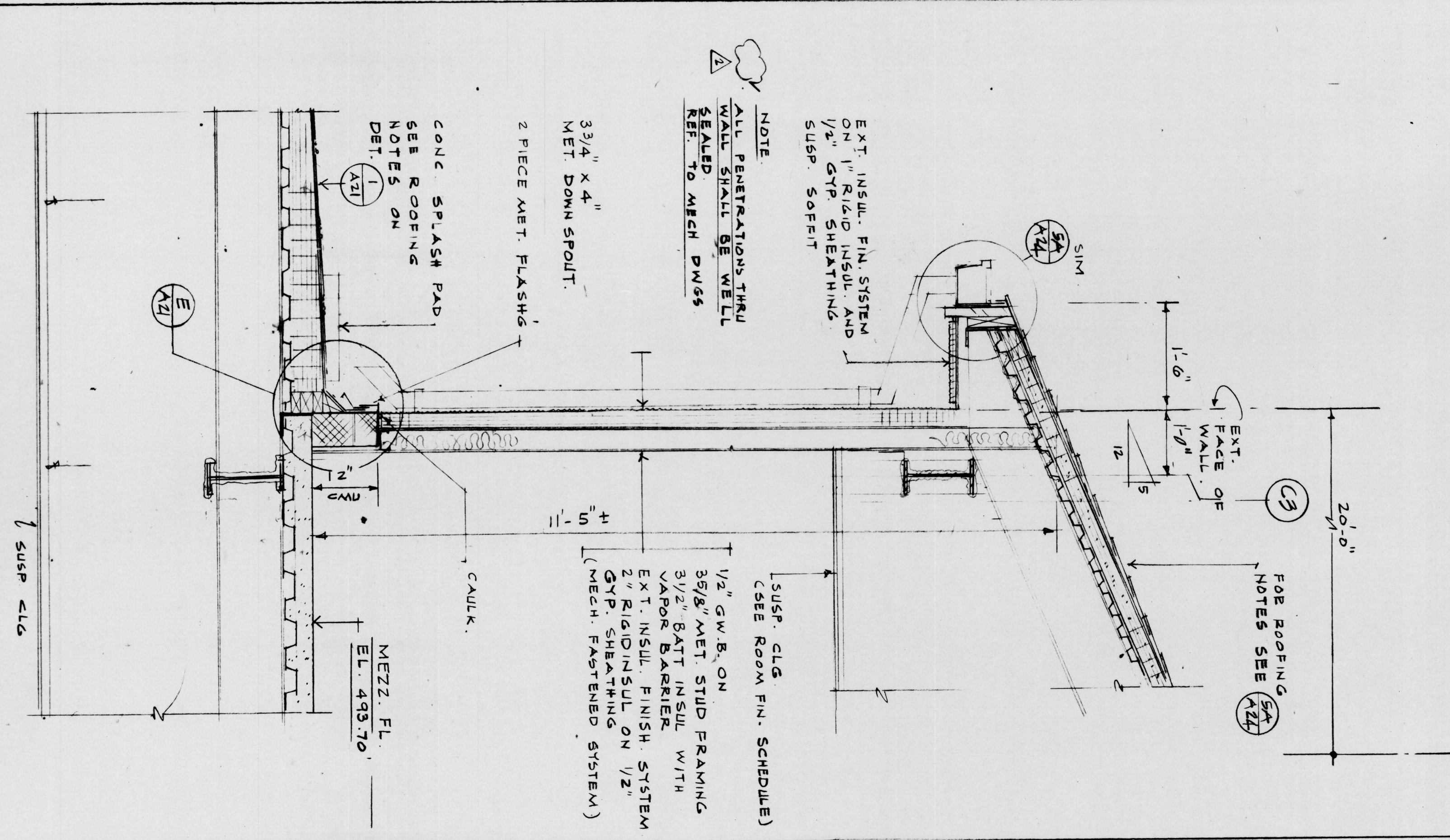
2A GABLE ROOF DET. AT MECH. ROOF AREA. 1/2" x 1/2"



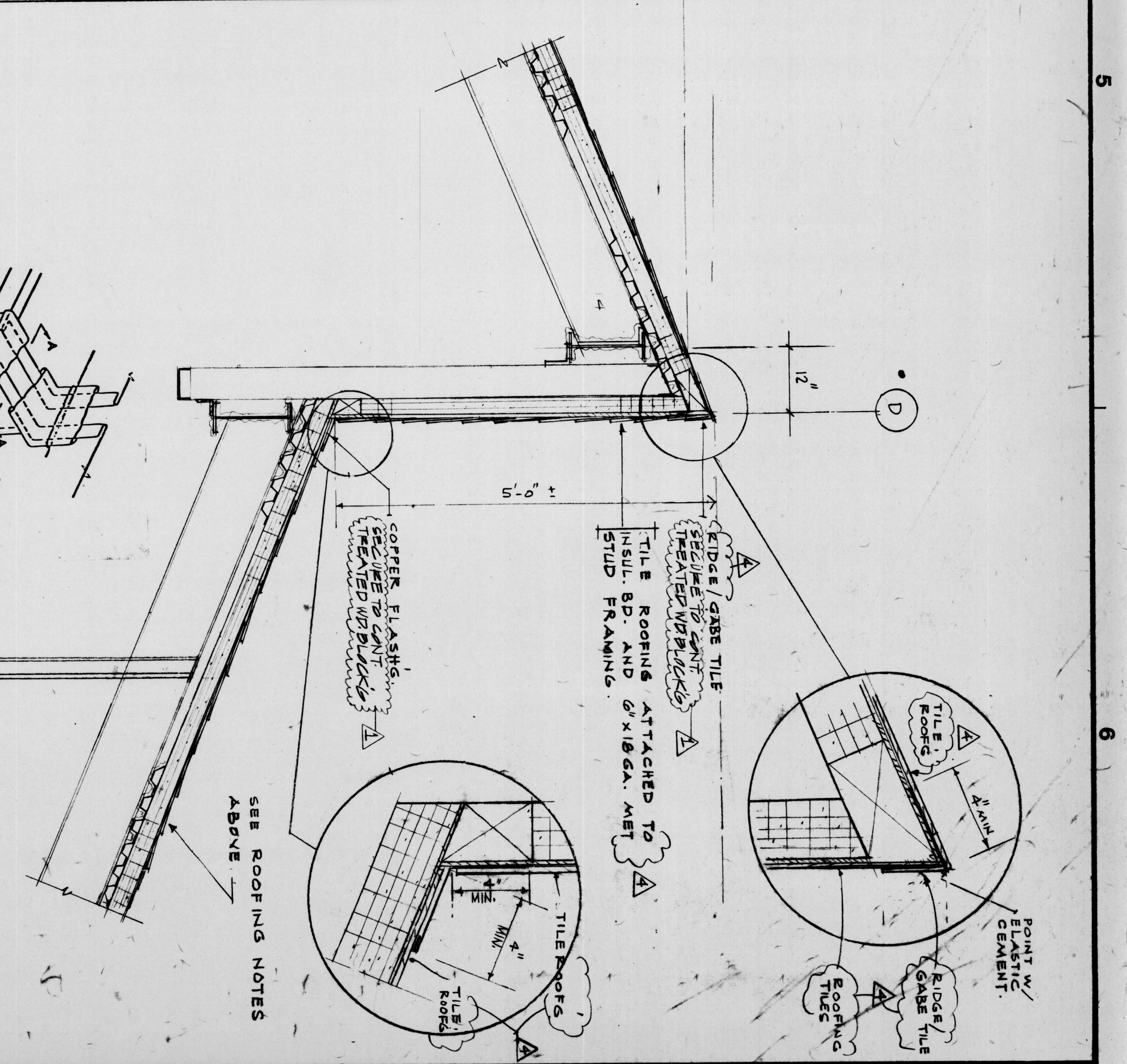
2D DETAIL SECTION 3/4" x 1/2"



E PART DETAIL EXT. DOOR SILL @ MEZZ 1/2" x 1/2"



3 WALL SECTION 3/4" x 1/2"



4 WALL SECTION 3/4" x 1/2"

NOTES

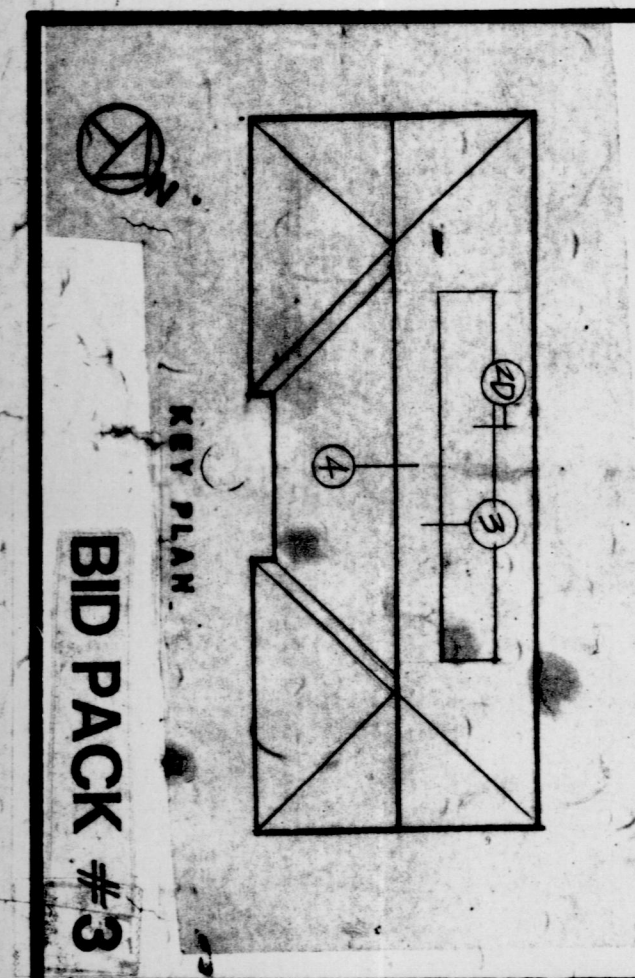
1. FOR STRUCTURAL & FINISHING SEE STRUCTURAL DRAWINGS.
2. FOR FINISHING SEE MECH. DIV'S NOTES IN THESE DRAWINGS.
3. ALL DIMENSIONS SHALL BE WITH UNLESS OTHERWISE NOTED.
4. ALL DIMENSIONS SHALL BE WITH UNLESS OTHERWISE NOTED.
5. ALL DIMENSIONS SHALL BE WITH UNLESS OTHERWISE NOTED.

Henry Adams, Inc.
Mech./Elect. Engineers

Gaudreau, Inc.
Architectural Engineers

Falsant Associates, Inc.
Structural Engineers

CORPORATE HEADQUARTERS
McCormick & Company
LOVETON BUSINESS CENTER
BALTIMORE COUNTY, MARYLAND



REVISIONS		WALL SECTIONS & DETAILS	
NO.	DATE	DESCRIPTION	BY
1	7-13-78	REVISED	
		PROJ. NO.	8914.10
		DATE	04-11-90
		DWG. NO.	A-21