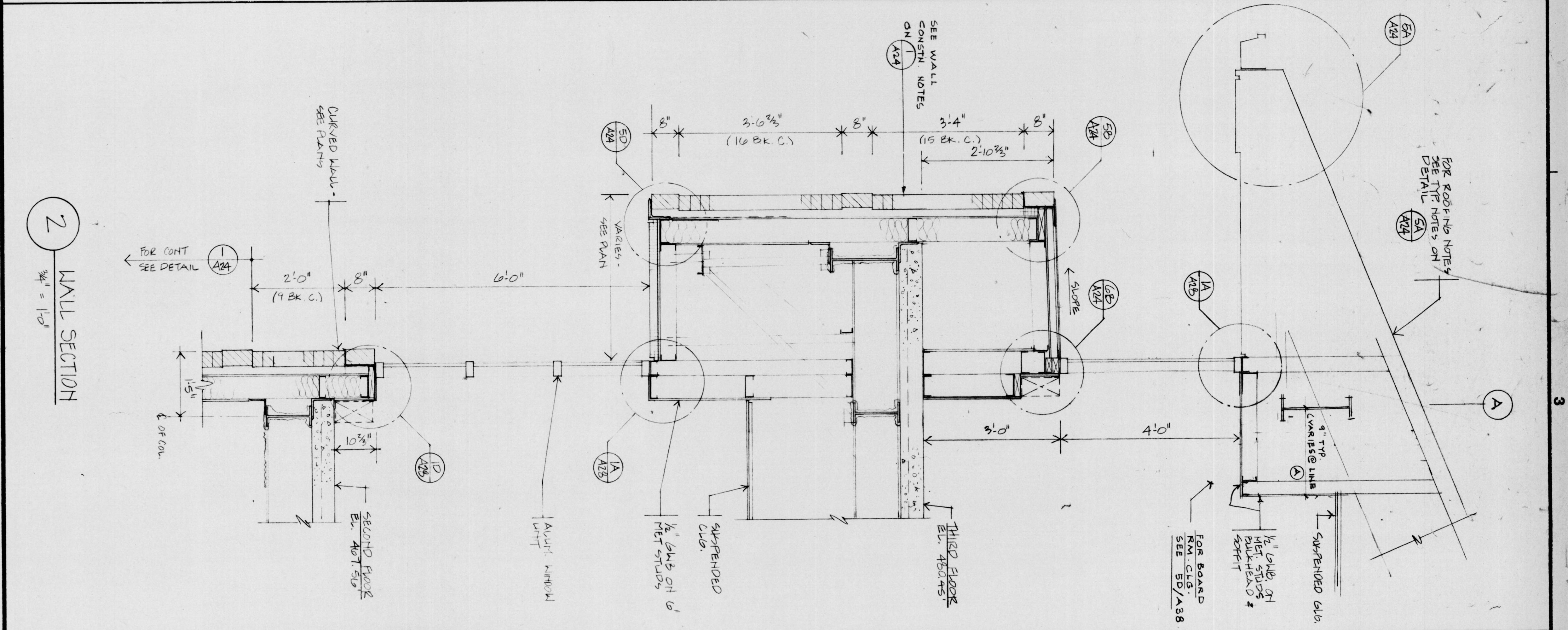
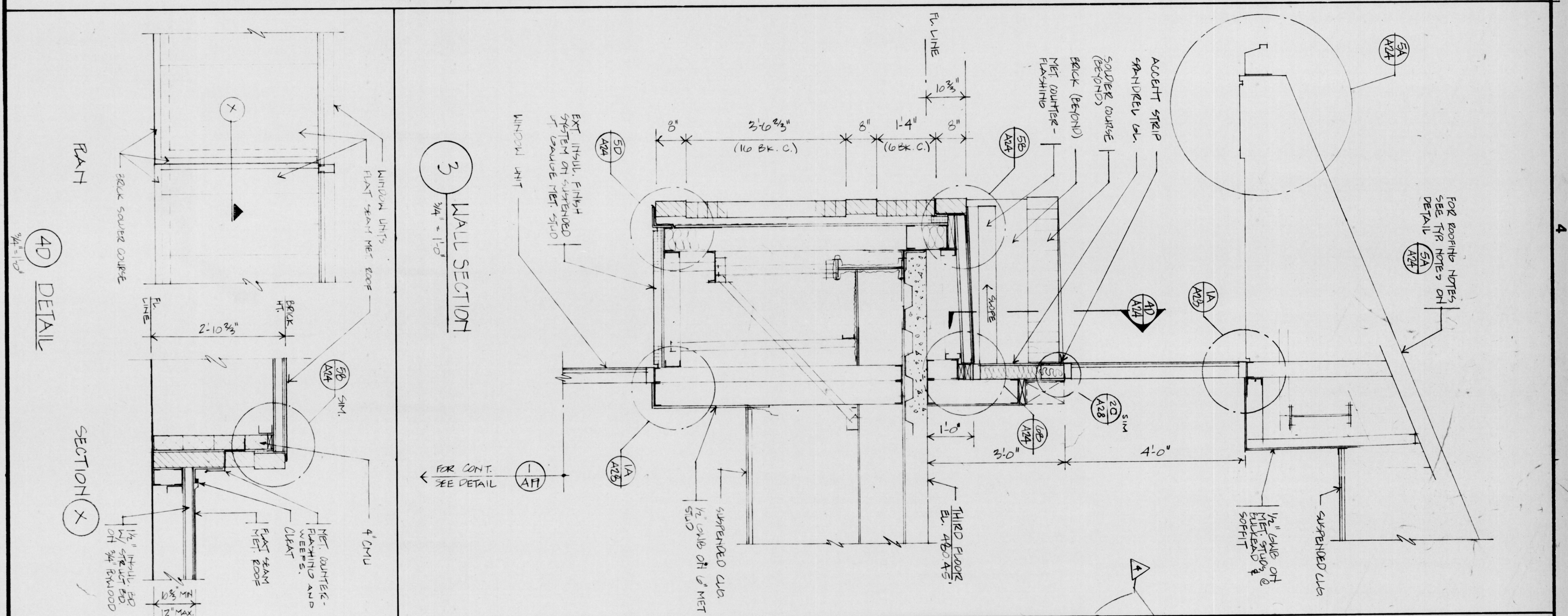


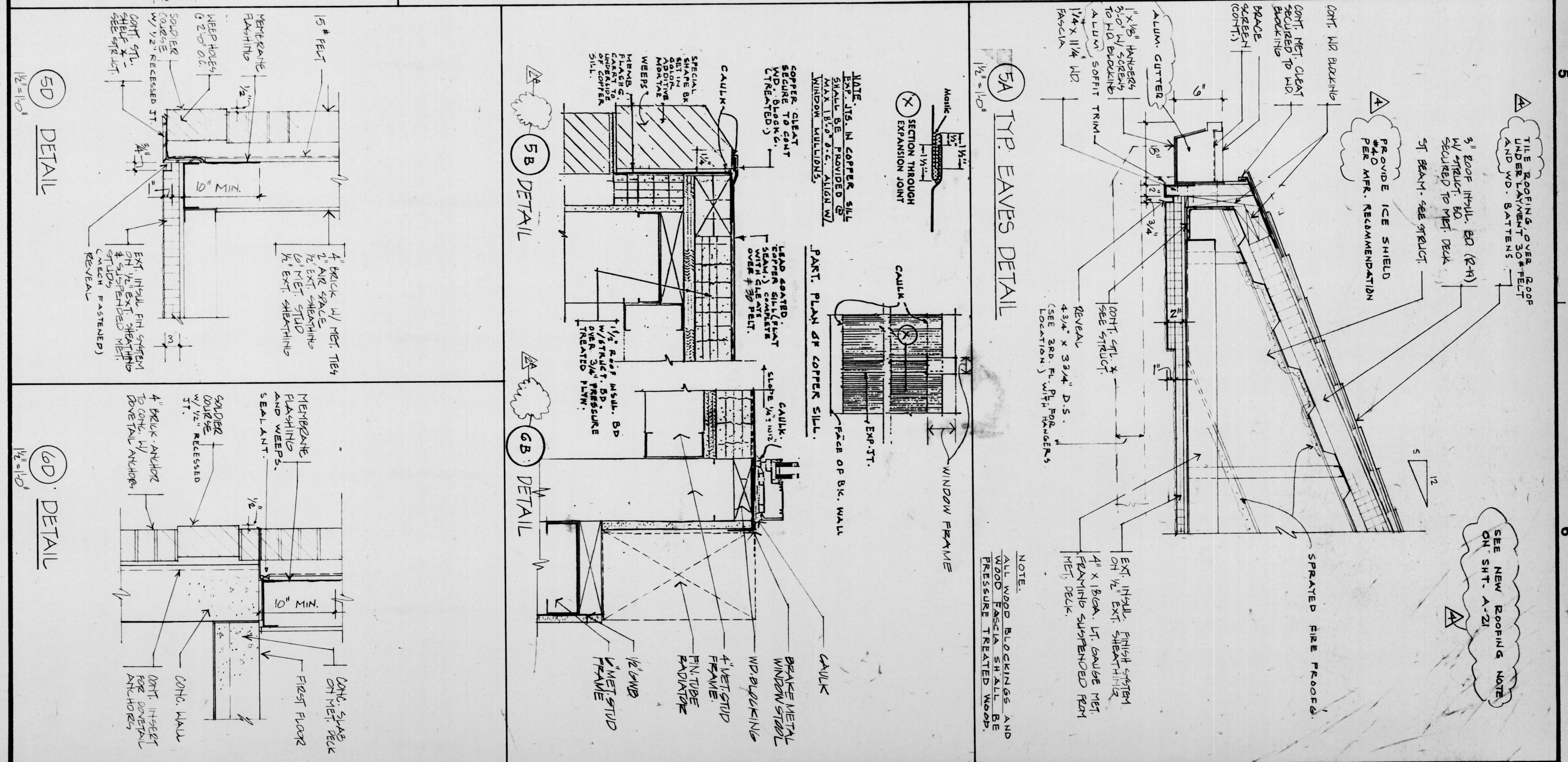
1 WALL SECTION
3/4" = 1'-0"



2 WALL SECTION
3/4" = 1'-0"



3 WALL SECTION
3/4" = 1'-0"



5A TYP. EAVES DETAIL
3/4" = 1'-0"

5B DETAIL
3/4" = 1'-0"

5D DETAIL
3/4" = 1'-0"

NOTES:
1. SEE NOTES HEREIN SHEET A-21

Henry Adams, Inc.
Mech./Elect. Engineers

Gaudreau, Inc.
Architectural Planners, Engineers
Baltimore

Falsant Associates, Inc.
Structural Engineers

CORPORATE HEADQUARTERS
McCormick & Company
LOVETON BUSINESS CENTER
BALTIMORE COUNTY, MARYLAND

REVISIONS		WALL SECTIONS & DETAILS	
NO.	DATE	DESCRIPTION	BY
1		PREPARED FOR CONSTRUCTION	
2		REVISED	
3		REVISED	

PROJ. NO.	8914.10	DWG. NO.	A-24
DATE	06-11-98		