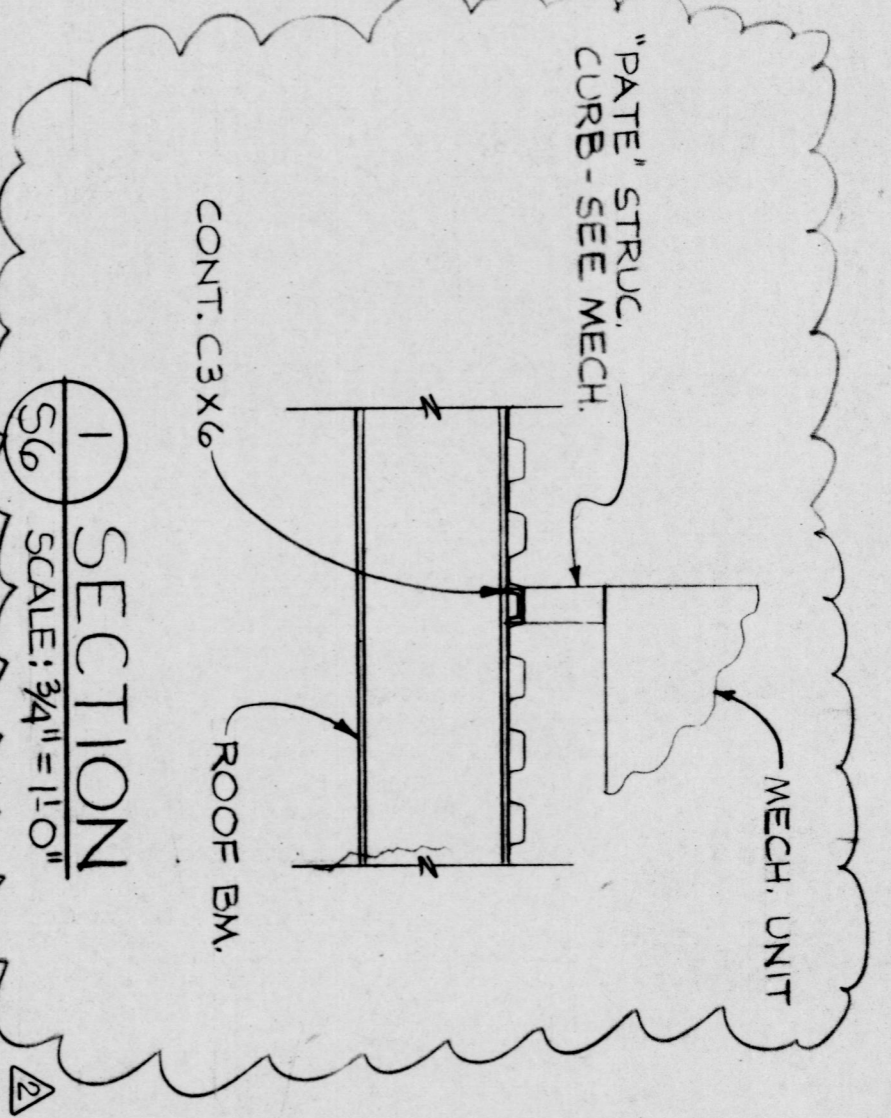
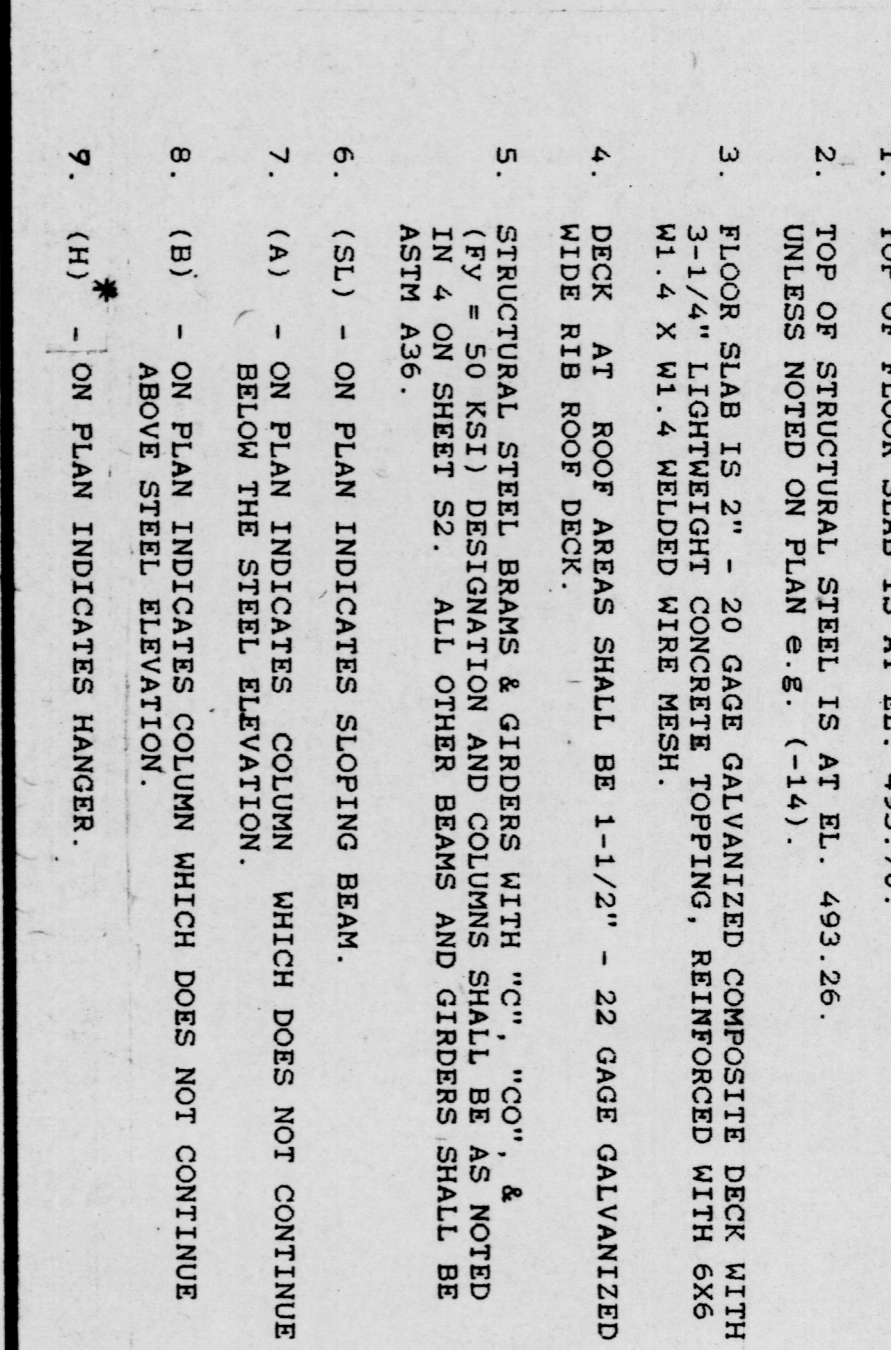


PLAN AT COOLING TOWER GRILLAGE



MEZZANINE FLOOR FRAMING PLAN



NOTES:

1. TOP OF FLOOR SLAB IS AT EL. 493.70.
2. TOP OF STRUCTURAL STEEL IS AT EL. 493.26 UNLESS NOTED ON PLAN E.G. (-1.4).
3. FLOOR SLAB IS 2" - 20 GAUGE GALVANIZED COMPOSITE DECK WITH 3-1/4" LIGHTWEIGHT CONCRETE TOPPING, REINFORCED WITH 6# W1.4 X 11.4 HELDED WIRE MESH.
4. DECK AT ROOF AREAS SHALL BE 1-1/2" - 22 GAUGE GALVANIZED WIRE AND ROOF DECK.
5. STRUCTURAL STEEL BEAMS & GIRDS WITH "MB" & "MB" WELD INDICATES MACHINE BEAM BY ELEVATOR CONTRACTOR.
6. (SI) - ON PLAN INDICATES SLOPING BEAM.
7. (A) - ON PLAN INDICATES COLUMN WHICH DOES NOT CONTINUE BELOW THE STEEL ELEVATION.
8. (B) - ON PLAN INDICATES COLUMN WHICH DOES NOT CONTINUE ABOVE STEEL ELEVATION.
9. (H) - ON PLAN INDICATES HANGER.

NOTE: COORD. DIMENSIONS WITH ELEVATOR CONTRACTOR W/ INDICATES MACHINE BEAM BY ELEVATOR CONTRACTOR.

PROVIDE 8" X 24" SOLID CMU BELOW BM ENDS (TRP)

NOTE: COORD. DIMENSIONS WITH ELEVATOR CONTRACTOR W/ INDICATES MACHINE BEAM BY ELEVATOR CONTRACTOR.

PLAN & ELEVATOR MACH. RM. SCALE: 3/8" = 1'-0"

NOTE: G.C. TO VERIFY DIMENSIONS W/ MECH. CONTRACTOR & SUPPLY TO STRUCTURAL STL. FABRICATOR.

SCALE: 3/8" = 1'-0"

SCALE: 3/8" = 1'-0"

SCALE: 3/8" = 1'-0"

SCALE: 3/8" = 1'-0"

SCALE: 3/8" = 1'-0"

SCALE: 3/8" = 1'-0"

SCALE: 3/8" = 1'-0"

SCALE: 3/8" = 1'-0"

SCALE: 3/8" = 1'-0"

SCALE: 3/8" = 1'-0"

SCALE: 3/8" = 1'-0"

SCALE: 3/8" = 1'-0"

SCALE: 3/8" = 1'-0"

SCALE: 3/8" = 1'-0"

SCALE: 3/8" = 1'-0"

SCALE: 3/8" = 1'-0"

SCALE: 3/8" = 1'-0"

SCALE: 3/8" = 1'-0"

SCALE: 3/8" = 1'-0"

SCALE: 3/8" = 1'-0"

SCALE: 3/8" = 1'-0"

SCALE: 3/8" = 1'-0"

SCALE: 3/8" = 1'-0"

SCALE: 3/8" = 1'-0"

SCALE: 3/8" = 1'-0"

SCALE: 3/8" = 1'-0"

SCALE: 3/8" = 1'-0"

SCALE: 3/8" = 1'-0"

Gaudreau, Inc.
Architect-Engineers
Baltimore

MCCormick & Company
CORPORATE HEADQUARTERS
LOVETON BUSINESS CENTER
BALTIMORE COUNTY, MARYLAND

ATTIC FRAMING PLAN

NO.	DATE	DESCRIPTION
1	11-2-88	AS NOTED
2	5-17-89	AS NOTED
3	7-24-89	4" X 8" TRUSS CORN LINE E7
4	8-15-89	AS NOTED

PROJ. NO. 89141
DATE 8/1/91
DWG. NO. S-6