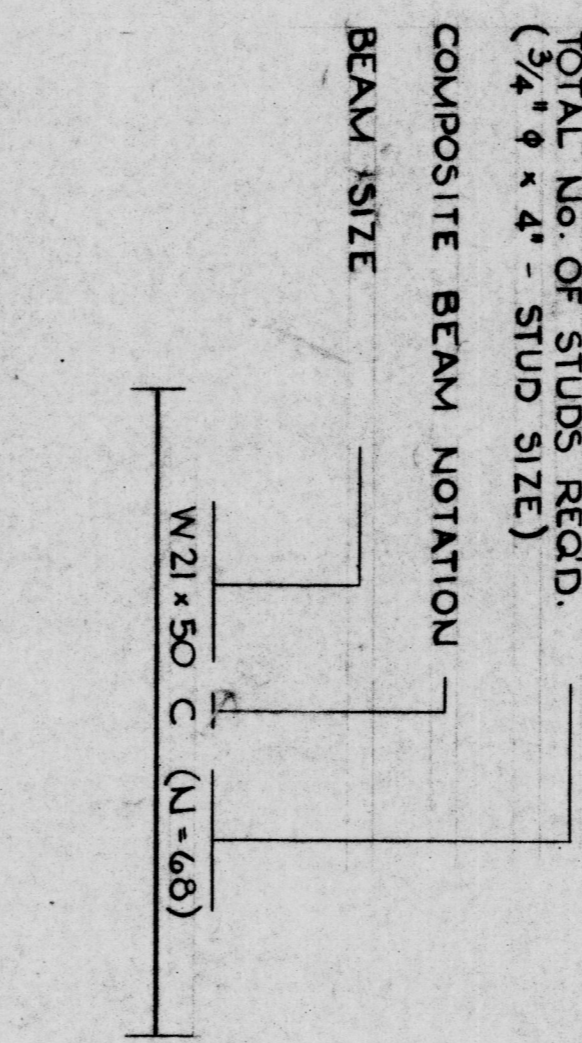
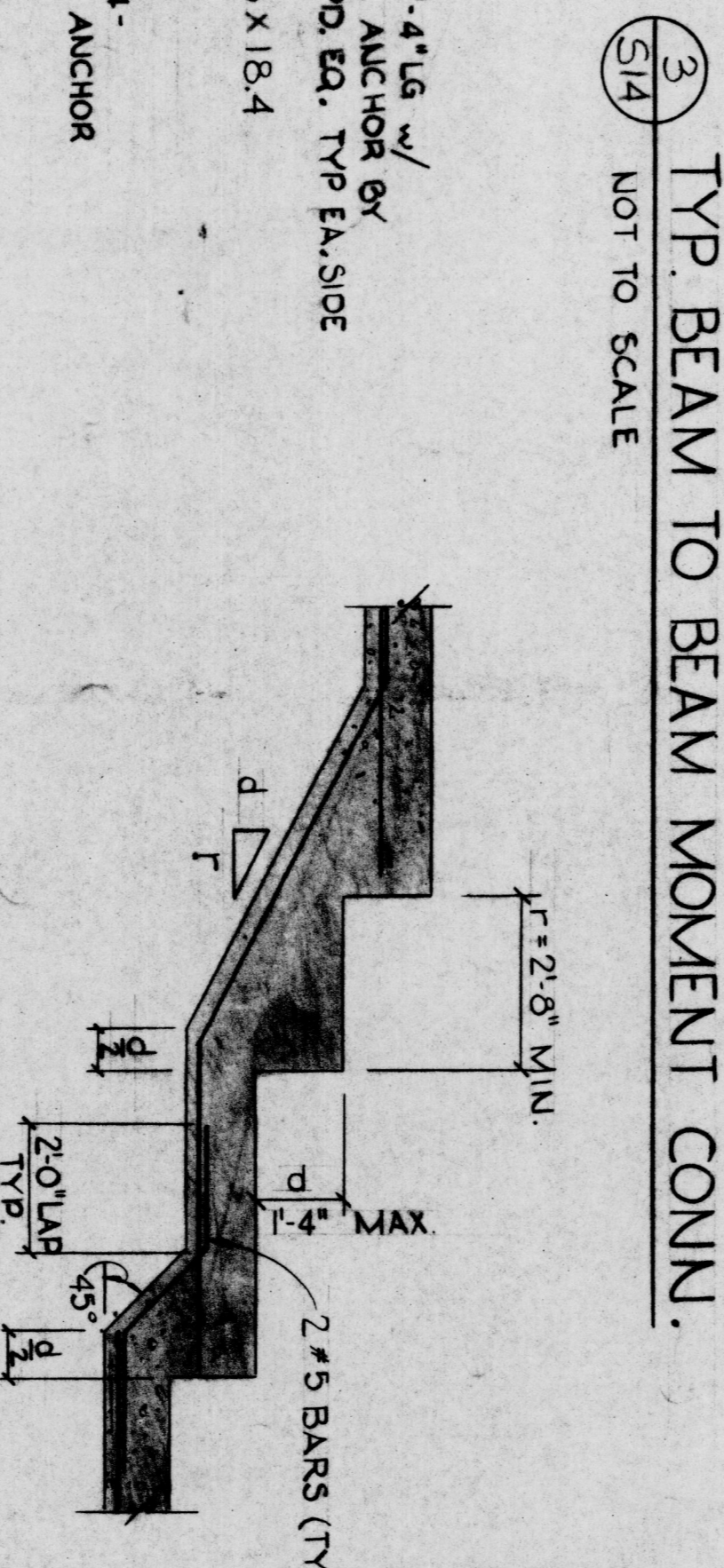


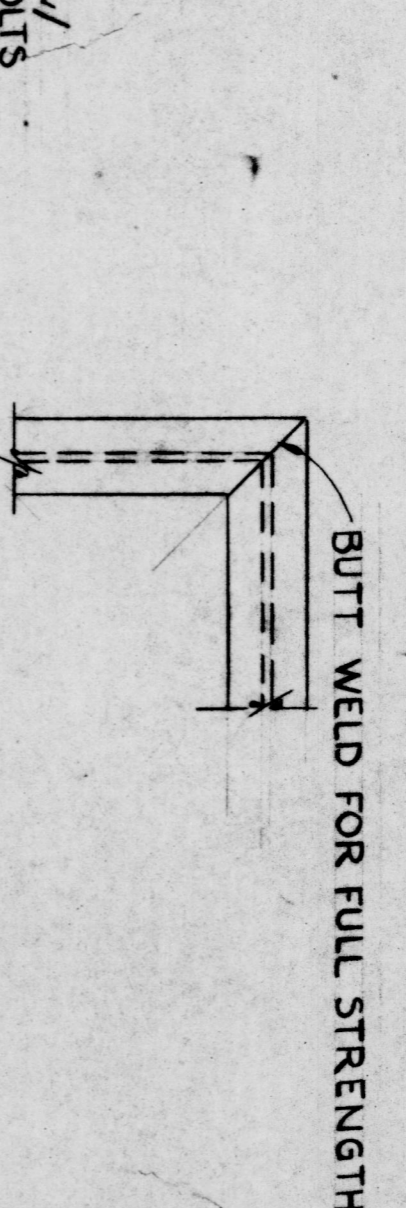
COMPOSITE BEAM NOTATIONS



TYP. BEAM TO BEAM MOMENT CONN.



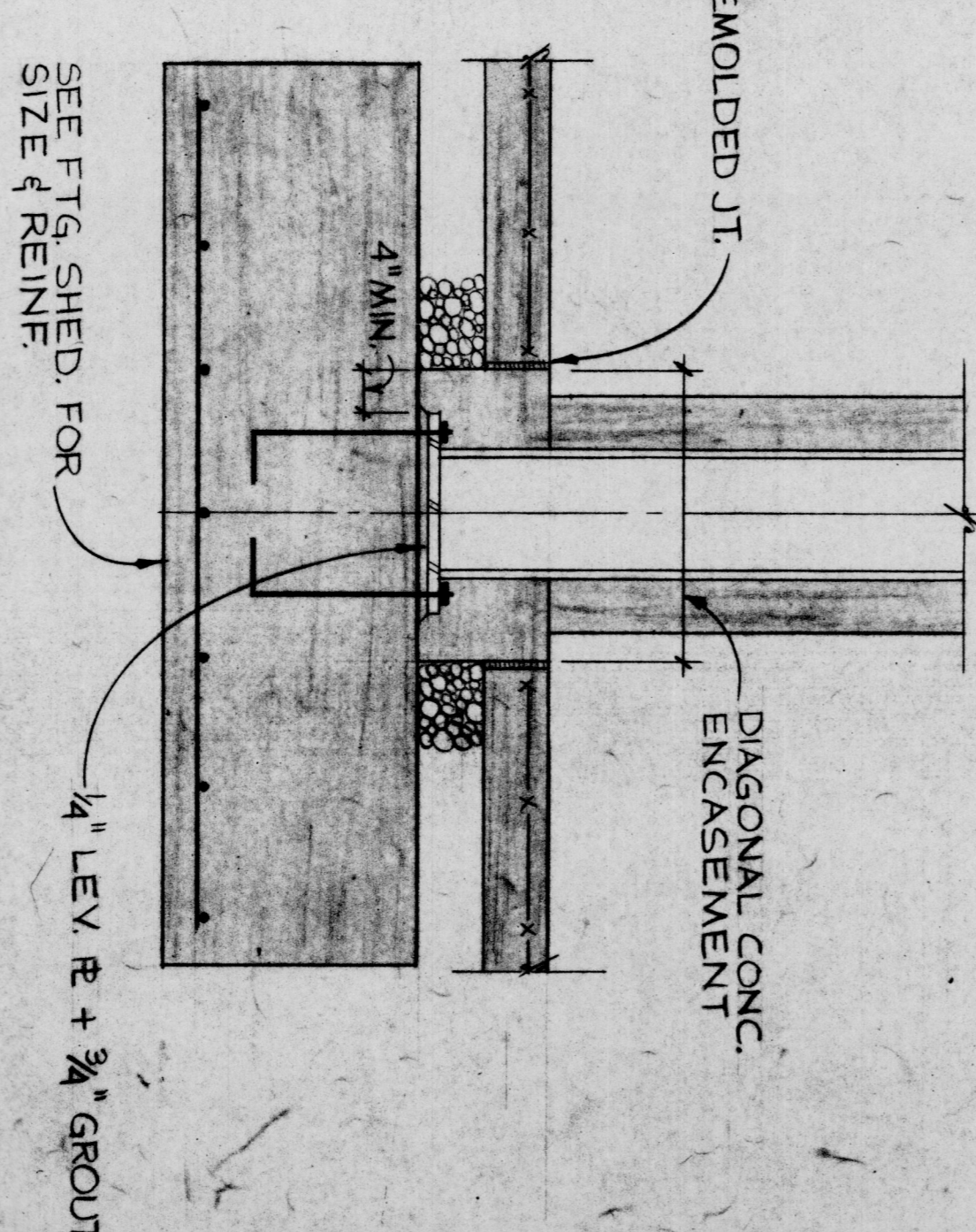
TYP. STEPPED FOOTING DETAIL



TYPICAL ELEVATION AT MASOURY OPENING IN CMU WALL



TYPICAL INTERIOR COLUMN DETAIL



- NOTES:
- See plan for beam sizes.
 - Provide additional studs @ 2'-0" o.c. for cantilever beams.
 - Provide additional studs @ 2'-0" o.c. for beams with 1/2 span of studs.
 - To clear beam connection, side closure of steel deck or steel edge, 2 studs are placed in any stud cluster, the number of studs shall be increased accordingly at no in-crease in value of the scheduled studs to provide for the full shear.
 - Steel deck shall be unholed unless noted otherwise.
 - Construction loads in excess of 20 p.s.f. shall not be placed on floor slab until concrete has attained its design strength.
 - Steel beams shall be fabricated and erected with camber up.
 - Steel deck shall be cut as required to fit around openings, columns, beam to column connections, plates and other material on top of beam.
 - Material on top of beam, between over beams except at the end of deck where they shall be offset 1" from center line of beam, alternating sides, supports for support of reinforcement and wire mesh on steel deck.
 - Ends of steel deck shall not be lapped, studs shall be lapped, turn a single thickness of deck. See specifications.
 - Provide specified wire mesh around all steel beams encased in concrete.
 - All steel beams marked "CO" on plans shall have studs @ 24" on center.

TYP. ELEVATOR PIT DETAIL



TYPICAL SECTION AT GRILLAGE



Gaudreau, Inc.
Architects Planners Engineers
Baltimore
810 Light Street Baltimore Maryland 21201

CORPORATE HEADQUARTERS
McCormick & Company
LOVETON BUSINESS CENTER
BALTIMORE COUNTY, MARYLAND

REVISIONS		TYPICAL DETAILS	
NO.	DATE	DESCRIPTION	
1	11-6-81	AS NOTED	
2	8-17-90	AS NOTED	
3	5/14/14	5/14/14 P.T. S.A.B.	

PROJ. NO. 89141
DWG. NO. S-14