

- SPECIAL NOTES: (APPLY TO THIS DWG. ONLY)**
- SEE PART PLAN ON DWG. M-3 FOR WORK IN THIS AREA.
  - HS AND HR PIPING TO BE HEAT TRACED. SEE ELECTRICAL DWGS. FOR DETAIL.
  - CONNECT RADIATOR FROM ENGINE GENERATOR TO 8' x 6' LOUVER.
  - NOT USED
  - SEE PART PLAN ON DWG. M-3 FOR CONTINUATION.
  - HEAT TAPE AND INSULATE ALL HORIZONTAL DRAINAGE PIPING ON THIS LEVEL.

**AIR REVOC SCHEDULE**

NO.	TYPE	CFM	REQ. SIZE	REMARKS
1	D-1	270	8 X 8	2.4M BLOW
2	B-1	270	8 X 8	
3	R-3	2000	30 X 20	

**LOWER LEVEL PARKING**  
SCALE: 1/8" = 1'-0"

- DRAWING NOTES: (APPLY TO THIS DWG. ONLY)**
- ENTIRE FLOOR TO BE SPRINKLERED. FROM THE DCP PIPE SYSTEM.
  - ALL VERTICAL SPRING AT COLUMN WALL LOCATIONS SHALL BE WITHIN COLUMN WALL ENCLOSURE.

**LOWER LEVEL PARKING**

ROOM NUMBER	ROOM NAME
100	LOWER LEVEL PARKING GARAGE
101	VESTIBULE
102	STAIR
103	STAIR
104	MECHANICAL
105	MECHANICAL
106	MECHANICAL
107	VESTIBULE
108	STAIR NO. 2

**Henry Adams, Inc.**  
Mech./Elect. Engineers

**Faisant Associates, Inc.**  
Structural Engineers

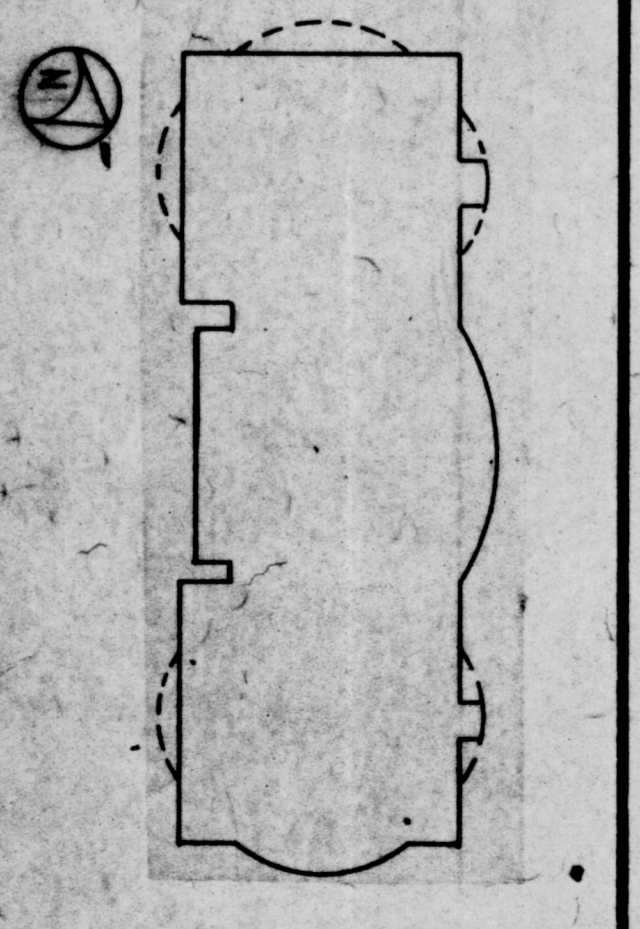
**Gaudreau, Inc.**  
Architect/Planner/Engineers

Baltimore  
810 Light Street, Baltimore, Maryland 21201

**CORPORATE HEADQUARTERS**

**McCormick & Company**

LOVETON BUSINESS CENTER  
BALTIMORE COUNTY, MARYLAND



**REVISIONS**

NO.	DATE	DESCRIPTION
1	7/15/90	EXHIBITION NO. 4
2	8/15/90	GM-1

**LOWER LEVEL PARKING**

PROJ. NO. **B914.10** DWG. NO. **M-3**

DATE **8/11/90**

BID PACKAGE #3