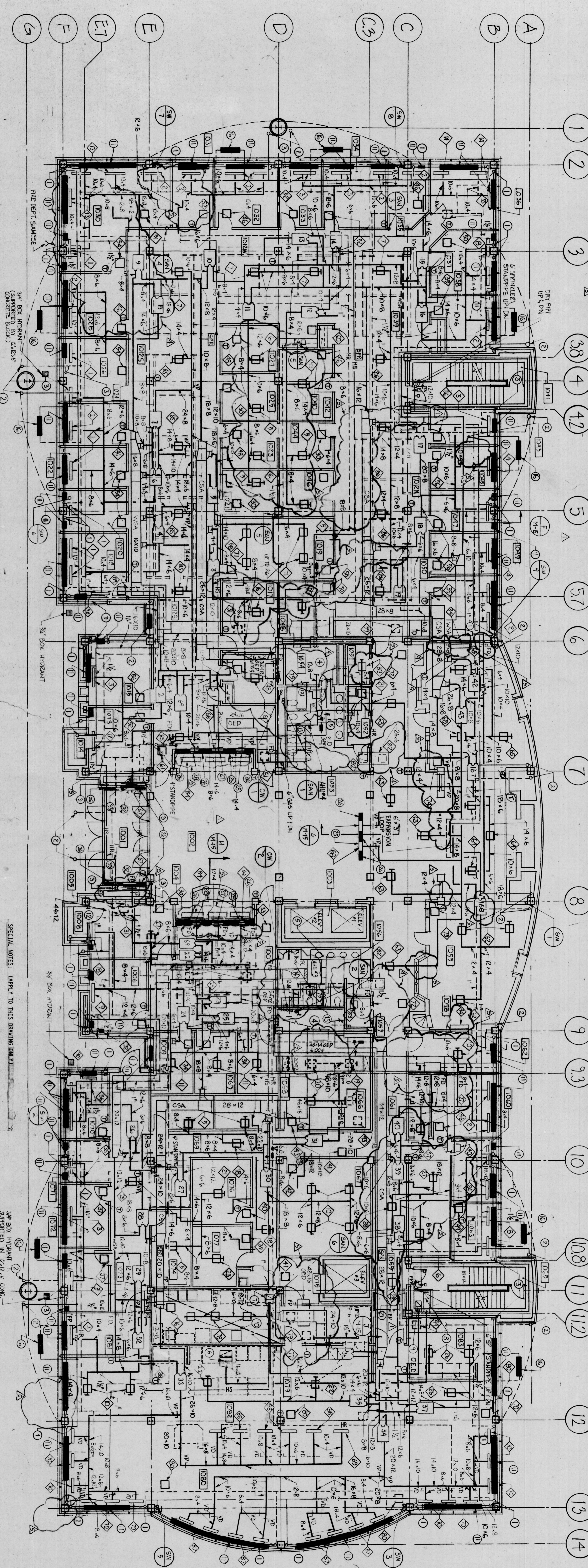


TYPE	QTY	REMARKS	TYPE	QTY	REMARKS
D-1	180	3" X 8"	D-1	180	3" LENGTH
D-4	105	6" X 8"	D-4	105	3" LENGTH
D-4	140	8" X 8"	D-4	140	3" LENGTH
D-4	130	8" X 8"	D-4	130	3" LENGTH
D-1	60	6" X 6"	D-1	60	2" LENGTH
D-1	70	6" X 6"	D-1	70	2" LENGTH
D-1	155	8" X 8"	D-1	155	2" LENGTH
D-4	90	6" X 8"	D-4	90	2" LENGTH
D-4	170	8" X 8"	D-4	170	2" LENGTH
D-1	30	6" X 6"	D-1	30	1" LENGTH
D-4	145	6" X 8"	D-4	145	1" LENGTH
D-4	115	8" X 8"	D-4	115	1" LENGTH

FIRST FLOOR PLAN	ROOM NUMBER	ROOM NAME
1001	1001	RESTROOM
1002	1002	RESTROOM
1003	1003	RESTROOM
1004	1004	RESTROOM
1005	1005	RESTROOM
1006	1006	RESTROOM
1007	1007	RESTROOM
1008	1008	RESTROOM
1009	1009	RESTROOM
1010	1010	RESTROOM
1011	1011	RESTROOM
1012	1012	RESTROOM
1013	1013	RESTROOM
1014	1014	RESTROOM
1015	1015	RESTROOM
1016	1016	RESTROOM
1017	1017	RESTROOM
1018	1018	RESTROOM
1019	1019	RESTROOM
1020	1020	RESTROOM
1021	1021	RESTROOM
1022	1022	RESTROOM
1023	1023	RESTROOM
1024	1024	RESTROOM
1025	1025	RESTROOM
1026	1026	RESTROOM
1027	1027	RESTROOM
1028	1028	RESTROOM
1029	1029	RESTROOM
1030	1030	RESTROOM
1031	1031	RESTROOM
1032	1032	RESTROOM
1033	1033	RESTROOM
1034	1034	RESTROOM
1035	1035	RESTROOM
1036	1036	RESTROOM
1037	1037	RESTROOM
1038	1038	RESTROOM
1039	1039	RESTROOM
1040	1040	RESTROOM
1041	1041	RESTROOM
1042	1042	RESTROOM
1043	1043	RESTROOM
1044	1044	RESTROOM
1045	1045	RESTROOM
1046	1046	RESTROOM
1047	1047	RESTROOM
1048	1048	RESTROOM
1049	1049	RESTROOM
1050	1050	RESTROOM
1051	1051	RESTROOM
1052	1052	RESTROOM
1053	1053	RESTROOM
1054	1054	RESTROOM
1055	1055	RESTROOM
1056	1056	RESTROOM
1057	1057	RESTROOM
1058	1058	RESTROOM
1059	1059	RESTROOM
1060	1060	RESTROOM
1061	1061	RESTROOM
1062	1062	RESTROOM
1063	1063	RESTROOM
1064	1064	RESTROOM
1065	1065	RESTROOM
1066	1066	RESTROOM
1067	1067	RESTROOM
1068	1068	RESTROOM
1069	1069	RESTROOM
1070	1070	RESTROOM
1071	1071	RESTROOM
1072	1072	RESTROOM
1073	1073	RESTROOM
1074	1074	RESTROOM
1075	1075	RESTROOM
1076	1076	RESTROOM
1077	1077	RESTROOM
1078	1078	RESTROOM
1079	1079	RESTROOM
1080	1080	RESTROOM
1081	1081	RESTROOM
1082	1082	RESTROOM
1083	1083	RESTROOM



- DRAMAING NOTES: (APPLY TO THIS DRAWING ONLY)**
1. ALL HS AND HP PIPING IS 3/4" UNLESS OTHERWISE NOTED.
  2. ALL HS AND HP RISERS AND DROPS ARE 3/4" UNLESS OTHERWISE NOTED.
  3. ALL TYPE D-4 DIFFUSERS SHALL BE #1 LONG 2 SLOTS UNLESS OTHERWISE NOTED.
  4. SMOKE DETECTOR LOCATIONS ARE SHOWN ON ELECTRICAL DRAWINGS.
  5. KITCHEN EQUIPMENT LOAD HAS TO BE VERIFIED FOR FINAL LAYOUT.
  6. TEA HOUSE (RM 1055) SHALL BE SPRINKLED ON BOTH SIDES OF GLASS WALL IN ROOM AND IN CORRIDOR.
  7. ALL D-1 DIFFUSERS REPRESENT 4-WAY BLOW PATTERN UNLESS OTHERWISE NOTED.
  8. THIS BRITICE FLOOR SHALL BE SPRINKLED FROM THE WET PIPE SPRINKLER SYSTEM.
  9. ALL VERTICAL PIPING AT COLUMN WALL LOCATIONS SHALL BE WITHIN COLUMN WALL ENCLOSURE.

**FIRST FLOOR PLAN**

- SPECIAL NOTES: (APPLY TO THIS DRAWING ONLY)**
1. 3/4" HS/HP UP & DN.
  2. 3/4" HS/HP UP.
  3. 3/4" HS/HP DN.
  4. SEE DRAWING M-10 FOR DUCT WORK AND PIPING IN THIS AREA.
  5. SEE PART PLAN ON M-10 FOR CORE TOILET ROOM.
  6. 30 X 12 DOWN TO EXHAUST HOOD.
  7. 22 X 12 DOWN TO EXHAUST HOOD.
  8. 12 X 16 UP.
  9. 12 X 12 UP.
  10. FOR PLUMBING LAYOUT OF KITCHEN AND CORE TOILET ROOM SEE PART PLAN ON DRAWING M-11.
  11. SEE WITH THE ROTATION OF FIN TUBE ROTATION ELEMENTS.
  12. SOUND ATTENUATION #3.
  13. SOUND ATTENUATION #4.
  14. SOUND ATTENUATION #1.

- SPECIAL NOTES: (APPLY TO THIS DRAWING ONLY)**
15. 3" WOOD HYDRANT SPRINKLER IN 12x12 CONC.
  16. SOUND ATTENUATION #2
  17. 1.5" NBR. FIR LOCATED IN OVERHANG SPACE BELOW SECOND FLOOR SLAB ABOVE SERVICE TYPE M.
  18. NOT USED
  19. NOT USED
  20. NOT USED
  21. 18 X 14 RETURN DUCT UP.
  22. 20 X 12 RETURN DUCT UP.
  23. 12 X 8 EXHAUST DUCT UP.
  24. 12 X 8 EXHAUST DUCT UP.
  25. 2"-0" L X 3" W X 10" H SUPPLY AIR PLENUM. BALANCE FOR 145 CFM.
  26. 2"-0" L X 6" W X 8" H SUPPLY AIR PLENUM. BALANCE FOR 200 CFM.
  27. 1'-6" L X 6" W X 8" H SUPPLY AIR PLENUM. BALANCE FOR 150 CFM.
  28. 2'-0" L X 3" W X 10" H SUPPLY AIR PLENUM. BALANCE FOR 120 CFM.
  29. 2'-0" L X 3" W X 10" H SUPPLY AIR PLENUM. BALANCE FOR 140 CFM.
  30. 1'-6" L X 3" W X 10" H SUPPLY AIR PLENUM. BALANCE FOR 90 CFM.
  31. 1'-0" L X 12" W X 8" H SUPPLY AIR PLENUM. BALANCE FOR 100 CFM.
  32. CONECTOR UNIT NO. 1. SEE DRAWING M-18 FOR CAPACITY AND SIZE.

Henry Adams, Inc.  
Mech./Elect. Engineers

Gaudreau Inc.  
Architects/Planners/Engineers

**McCormick & Company**  
CORPORATE HEADQUARTERS  
LOVETON BUSINESS CENTER  
BALTIMORE COUNTY, MARYLAND

Faisant Associates, Inc.  
Structural Engineers

Baltimore

BALTIMORE COUNTY, MARYLAND

NO.	DATE	DESCRIPTION
1	10/1/90	ISSUE FOR CONSTRUCTION SET
2	10/1/90	REVISION ARCH. CHANGE

**FIRST FLOOR PLAN**

PROJ. NO. 10  
DWG. NO. M-5

DATE 4/11/90