

MECHANICAL ROOM - LIGHTING

- SPECIAL NOTES: (APPLICABLE TO DRAWING E-2)**
- 3P, 600A WESS IN NEA 1 ENCLOSURE. MOUNT ON WALL SO THAT TOP OF WESS IS 78" AFF.
 - MAKE CONNECTION TO CHILLER POWER DISTRIBUTION BLOCK.
 - MAKE CONNECTION TO CHILLER CONTROL PANEL. MAKE ALL NECESSARY CONNECTIONS FROM CONTROL PANEL TO CHILLER CONTROL ITEMS AS REQUIRED BY MANUFACTURER.
 - 23(PP-02) TO 3P-15A-05.
 - NEA SITE 0 COMPARTMENT MOTOR STARTERS WITH 3P-30A WESS. PROVIDE GREEN PILOT LIGHT AND HOLD SWITCH WITH AUXILIARY CONTACTS AS REQUIRED IN NEA 1 ENCLOSURE. MOUNT 48" AFF.
 - TO 1P-15A-05.
 - 22(NV-02) TO 3P-15A-05.
 - SEE PLAN 17-E-2 FOR CONTINUATION.
 - 10(LP-02).
 - UP SEE DWG. E-3 FOR CONTINUATION.
 - UP #10-1/20 HP, 120V, 1Ø.
 - TO 10(LP-02) UPPER LEVEL GARAGE.

- ROUTE THROUGH RELAY PANEL G2 THEN TO PANEL LP-02.
- SEE PLAN 27-E-2 FOR CONTINUATION.
- WALL MOUNTED LIGHTING, LIGHT SWITCH AND RECEPTACLE IN PIT AS DIRECTED BY ELEVATOR CONTRACTOR. COULANT HEATER.
- 20(LP-1)-2 #10 x #10 GA TO 2P-30A CB.
- 15(EP-1)-1.
- TO EP-2. SEE DWG. E-12 FOR WIRE AND CONDUIT SIZE.
- CONNECT TO GENERATOR CONTROL PANEL.
- DUCT BANK #1. SEE DETAIL 13/E-14 AND DETAIL 14/E-13. SEE DRAWING ME-1 FOR CONTINUATION OF DUCT BANK OUTSIDE OF BUILDING. ON UPPER LEVEL PARTING.
- CONNECT TO BATTERY STORAGE.

- SPEAKER/PHONE. MOUNTING HEIGHT AS RECOMMENDED BY MANUFACTURER. SEE DETAIL 3/E-13 AND SPEC FOR WIRING.
- FOR LIGHTING SEE DETAIL 17-E-3 THIS DRAWING.
- 3P-30A WESS IN NEA 1 ENCLOSURE. MOUNT 48" AFF.
- 3P-20A WESS IN NEA 38 ENCLOSURE. MOUNT AT UNIT MAINTAINING NATIONAL ELECTRIC CODE CLEARANCES.
- HEAT TRACE FROM POINT OF LOWER LEVEL SLABS. SEE MECHANICAL ROOM N-5.
- HEAT TRACE FROM POINT OF LOWER LEVEL CEILING SPACE.
- KNOW JUNCTION BOX ADJACENT TO PIPING IN LOWER LEVEL CEILING SPACE.
- JUNCTION BOX FOR MAGNETIC DOOR CONTACT. EXACT LOCATION TO BE COORDINATED WITH SECURITY MANUFACTURER.
- JUNCTION BOX FOR CAMERA. EXACT LOCATION TO BE COORDINATED WITH SECURITY MANUFACTURER.
- WALL-MOUNTED JUNCTION BOX FOR PROXIMITY CARD SENSOR. MOUNT FLUSH IN WALL. EXACT LOCATION TO BE COORDINATED WITH SECURITY MANUFACTURER.

- DRAWING NOTES: (APPLICABLE TO DWG. E-2)**
- PANELBOARD EP-1, EP-2, EP-02, EP-1, LP-02, AND RP-02 DWG. E-3 FOR LOCATION.
 - SWITCHBOARD WESS-4 IS LOCATED IN ELECTRICAL ROOM ON UPPER LEVEL. SEE DWG. E-3 FOR LOCATION.
 - UP TO UPPER LEVEL. SEE DWG. E-3 FOR LOCATION.
 - UP #20, 1/20 HP, 1Ø, 120V (RE45F50).

LOWER LEVEL MARKING

ROOM NUMBER	ROOM NAME
100	LOWER LEVEL MARKING GARAGE
101	VESTIBULE
102	STAIR #1
103	MECHANICAL
104	GENERATOR
105	VESTIBULE
106	VESTIBULE
107	STAIR NO. 2
108	

BID PACKAGE #2

Henry Adams, Inc.
Mech./Elect. Engineers

Falsant Associates, Inc.
Structural Engineers

Gaudreau Inc.
Architectural Power Engineers

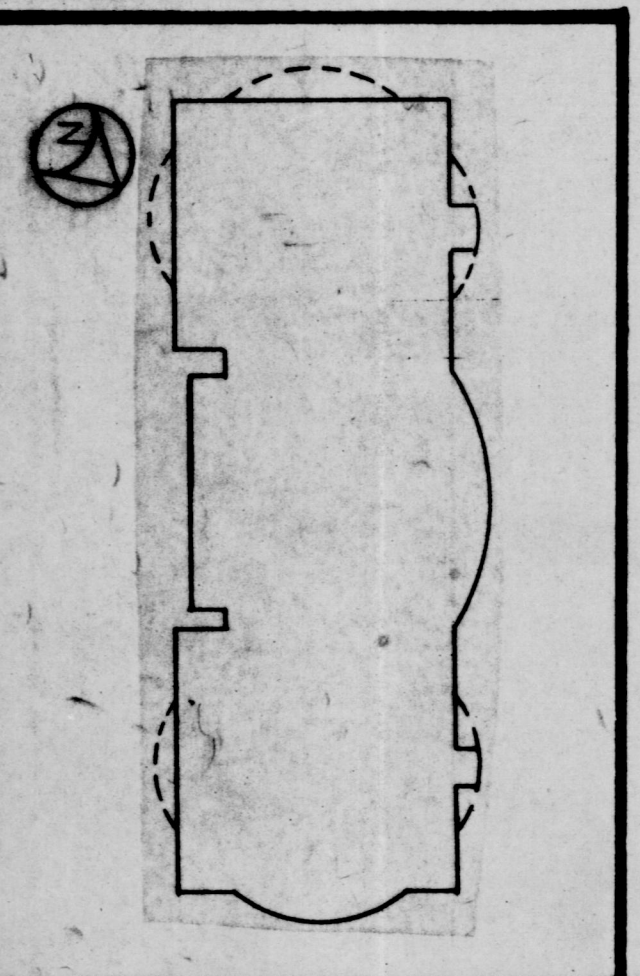
Baltimore

610 Light Street Baltimore Maryland 21201

CORPORATE HEADQUARTERS

McCormick & Company

LOVETON BUSINESS CENTER
BALTIMORE COUNTY, MARYLAND



REVISIONS	
NO.	DATE
1	3-2-80
2	8-17-80

DESCRIPTION
CONSTRUCTION SET
B.W.30 DDE-1

PROJ. NO.	1510
DATE	8/17/80
DWG. NO.	E-2

61A JOB NO. M017287