

- SPECIAL NOTES:** (APPLICABLE TO ONE, E-7)
1. PUNCH THROUGH FOR 3 NORMAL POWER CIRCUITS AND VOICE/DATA WIRING. PUNCH THROUGH TO BE LOCATED DIRECTLY BELOW BASE FEED MOULD OF SYSTEMS FURNITURE. SEE DETAIL 4/E-13 FOR SYSTEMS FURNITURE MANUFACTURER'S FINISHING REQUIREMENTS. SEE SPEC AND DETAIL 4/E-13.
 2. MOUNT DOUBLE OUTLET RECEPTACLE 22" AFF ON TR.
 3. MOUNT RECEPTACLE BEHIND UNDERCOUNTER REFRIGERATOR.
 4. MOUNT RECEPTACLE FOR COFFEE MAKER 6" ABOVE COUNTER BACKSLASH.
 5. MOUNT RECEPTACLE FOR COFFEE MAKER 6" ABOVE COUNTER BACKSLASH.
 6. MOUNT 6" ABOVE TABLE TOP.
 7. MAKE NORMAL POWER AND VOICE/DATA CONNECTION TO SYSTEMS FURNITURE AS DIRECTED BY SYSTEMS FURNITURE MANUFACTURER. SEE DETAIL 4/E-13.
 8. PROVIDE 8 - #12 IN 3/4" C, EIGHT WIRES SMALL, INCLUDE 3 - #12 PHASE WIRES, 3 - #12 NEUTRAL WIRES AND 2 - #12 BROWN WIRES. SEE DETAIL 4/E-13.
 9. MOUNT BELOW COUNTER TOP 18" AFF.
 10. U-24.
 11. ELP-24.
 12. MOUNT RECEPTACLE AND VOICE/DATA OUTLETS 3" ABOVE COUNTER.
 13. SEE DETAIL 6/E-13 FOR EXACT LOCATION OF ELECTRICAL EQUIPMENT IN THIS ROOM.
 14. SEE DETAIL 7/E-13 FOR EXACT LOCATION OF ELECTRICAL EQUIPMENT IN THIS ROOM.
 15. MOUNT 48" AFF.
 16. MOUNT 48" (EAST).
 17. 60A WIRE IN MECH 1 ENCLOSURE. MOUNT AT UNIT MAINTAINING NATIONAL ELECTRICAL CODE CLEARANCES.
 18. 14(MC-E3) ROUTE IN EAST MECHANICAL SHWIFT TO MEZZANINE NEXT TO NORTH WALL.
 19. 40U (6 WEST).
 20. 15(MC-E3) ROUTE IN EAST MECHANICAL SHWIFT TO MEZZANINE NEXT TO NORTH WALL.
 21. EMP-24.
 22. 4" LONG 1/4" WIRE VERTICAL AREA SHWIFT TO ROUTE FEEDERS.

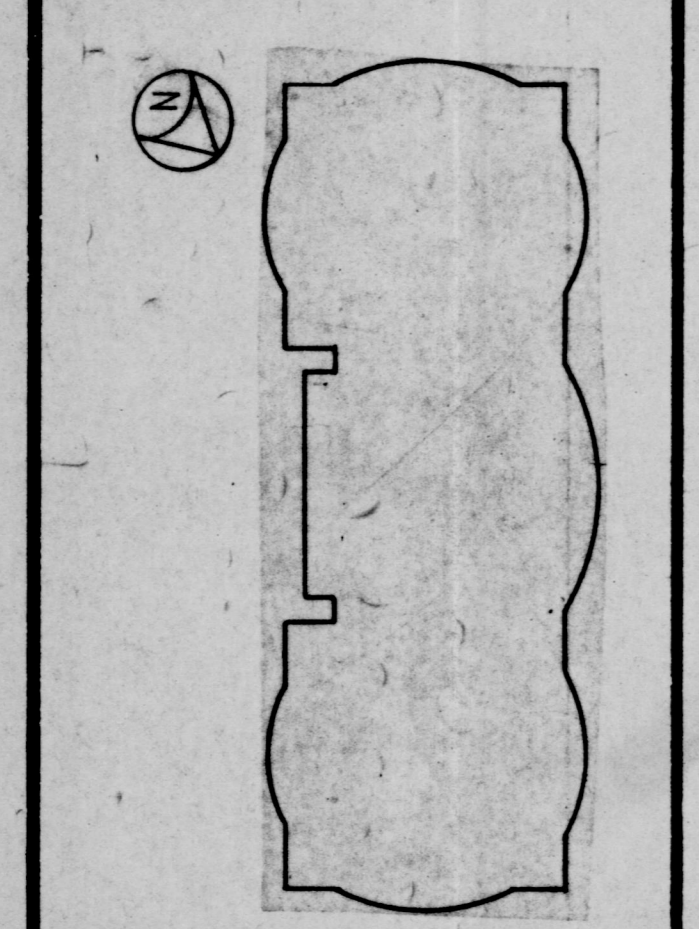
SECOND FLOOR PLAN - POWER & COMMUNICATIONS

23. ADD REMOTE WATER COOLER. MOUNT 7'-0" AFF. TO FACE FOR CONTROL OF SPACE EXHAUST FAN FOR AIRBLUM.

Henry Adams, Inc.
Mech./Elect. Engineers

Gaudreau, Inc.
Architect/Interior Designers
Baltimore

CORPORATE HEADQUARTERS
McCormick & Company
LOVETON BUSINESS CENTER
BALTIMORE COUNTY, MARYLAND



REVISIONS

NO.	DATE	DESCRIPTION
1	8/13/00	BIDNO CONSTRUCTION SET
2	8/13/00	CBE-1

POWER AND COMMUNICATIONS

PROJ. NO. **8914.10**
DATE **8/13/00**
DWG. NO. **E-7**

BID PACKAGE #3

ROOM NUMBER	ROOM NAME
2001	ATTORNEY
2002	CONFERENCE
2003	CONFERENCE
2004	CONFERENCE
2005	CONFERENCE
2006	CONFERENCE
2007	CONFERENCE
2008	CONFERENCE
2009	CONFERENCE
2010	CONFERENCE
2011	CONFERENCE
2012	CONFERENCE
2013	CONFERENCE
2014	CONFERENCE
2015	CONFERENCE
2016	CONFERENCE
2017	CONFERENCE
2018	CONFERENCE
2019	CONFERENCE
2020	CONFERENCE
2021	CONFERENCE
2022	CONFERENCE
2023	CONFERENCE
2024	CONFERENCE
2025	CONFERENCE
2026	CONFERENCE
2027	CONFERENCE
2028	CONFERENCE
2029	CONFERENCE
2030	CONFERENCE
2031	CONFERENCE
2032	CONFERENCE
2033	CONFERENCE
2034	CONFERENCE
2035	CONFERENCE
2036	CONFERENCE
2037	CONFERENCE
2038	CONFERENCE
2039	CONFERENCE
2040	CONFERENCE
2041	CONFERENCE
2042	CONFERENCE
2043	CONFERENCE
2044	CONFERENCE
2045	CONFERENCE
2046	CONFERENCE
2047	CONFERENCE
2048	CONFERENCE
2049	CONFERENCE
2050	CONFERENCE
2051	CONFERENCE
2052	CONFERENCE
2053	CONFERENCE
2054	CONFERENCE
2055	CONFERENCE
2056	CONFERENCE
2057	CONFERENCE
2058	CONFERENCE
2059	CONFERENCE
2060	CONFERENCE
2061	CONFERENCE
2062	CONFERENCE
2063	CONFERENCE
2064	CONFERENCE
2065	CONFERENCE
2066	CONFERENCE
2067	CONFERENCE
2068	CONFERENCE
2069	CONFERENCE
2070	CONFERENCE
2071	CONFERENCE
2072	CONFERENCE
2073	CONFERENCE
2074	CONFERENCE
2075	CONFERENCE
2076	CONFERENCE
2077	CONFERENCE
2078	CONFERENCE
2079	CONFERENCE
2080	CONFERENCE
2081	CONFERENCE
2082	CONFERENCE
2083	CONFERENCE
2084	CONFERENCE
2085	CONFERENCE
2086	CONFERENCE
2087	CONFERENCE
2088	CONFERENCE
2089	CONFERENCE
2090	CONFERENCE
2091	CONFERENCE
2092	CONFERENCE
2093	CONFERENCE
2094	CONFERENCE
2095	CONFERENCE
2096	CONFERENCE
2097	CONFERENCE
2098	CONFERENCE
2099	CONFERENCE
2100	CONFERENCE
2101	CONFERENCE