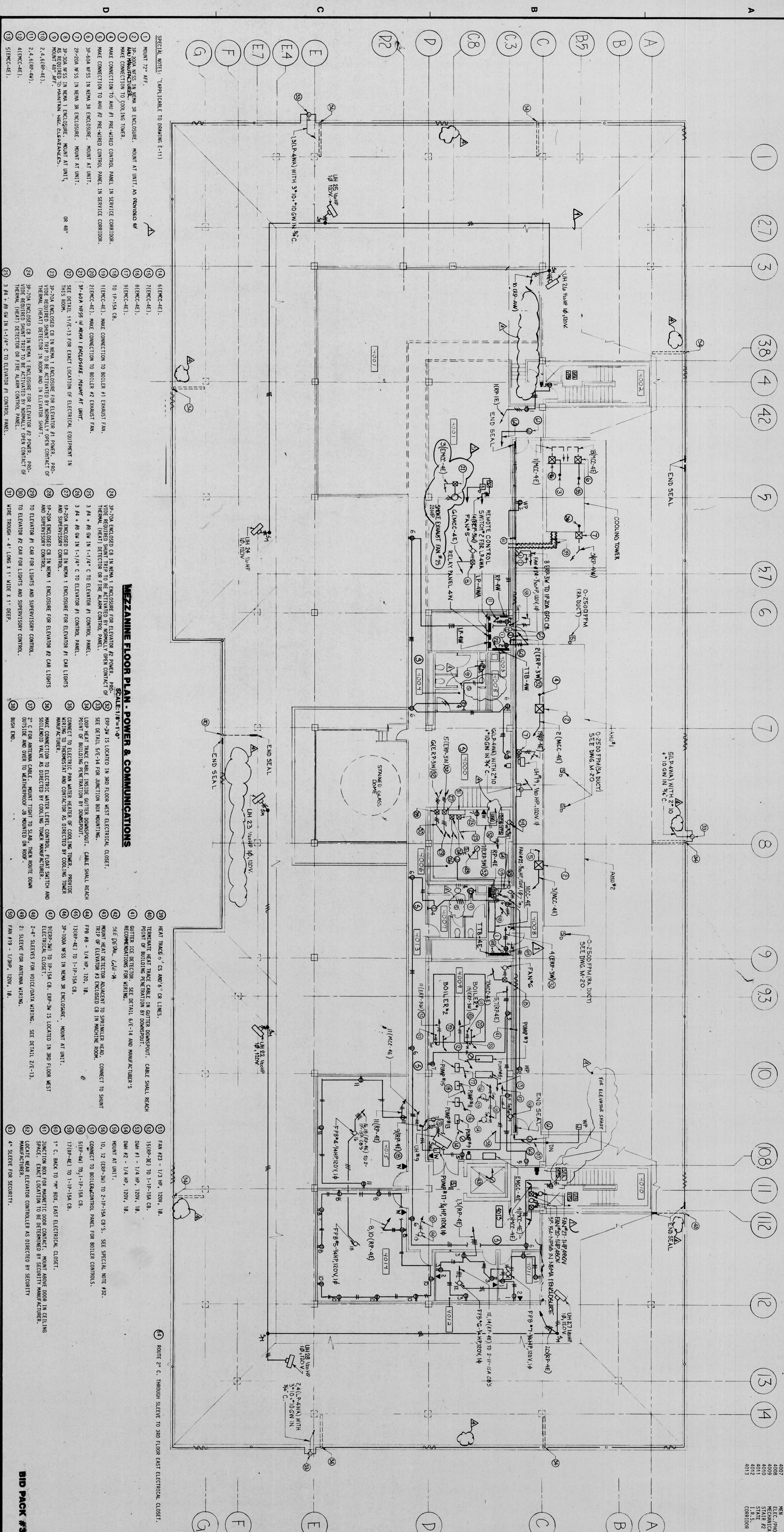


MEZZANINE ROOM NUMBER	ROOM NAME
4000	LOBBY
4001	FUTURE OFFICE
4002	ELEVATOR
4003	ELEVATOR
4004	ELEVATOR
4005	ELEVATOR
4006	ELEVATOR
4007	ELEVATOR
4008	ELEVATOR
4009	ELEVATOR
4010	ELEVATOR
4011	ELEVATOR
4012	ELEVATOR
4013	ELEVATOR
4014	ELEVATOR
4015	ELEVATOR
4016	ELEVATOR
4017	ELEVATOR
4018	ELEVATOR
4019	ELEVATOR
4020	ELEVATOR
4021	ELEVATOR
4022	ELEVATOR
4023	ELEVATOR
4024	ELEVATOR
4025	ELEVATOR
4026	ELEVATOR
4027	ELEVATOR
4028	ELEVATOR
4029	ELEVATOR
4030	ELEVATOR
4031	ELEVATOR
4032	ELEVATOR
4033	ELEVATOR



- SPECIAL NOTES: *APPLICABLE TO DRAWING E-11)
1. MOUNT 72" AFF.
 2. 3P-20A WSS IN MEEM 3R ENCLOSURE. MOUNT AT UNIT. AS PROVIDED BY MANUFACTURER.
 3. MAKE CONNECTION TO COOLING TOWER.
 4. MAKE CONNECTION TO AND #1 PRE-WIRED CONTROL PANEL IN SERVICE CORRIDOR.
 5. MAKE CONNECTION TO AND #2 PRE-WIRED CONTROL PANEL IN SERVICE CORRIDOR.
 6. 3P-60A WSS IN MEEM 3R ENCLOSURE. MOUNT AT UNIT.
 7. 3P-20A WSS IN MEEM 3R ENCLOSURE. MOUNT AT UNIT.
 8. 3P-20A WSS IN MEEM 1 ENCLOSURE. MOUNT AT UNIT.
 9. AS REQUIRED TO MAINTAIN NEC CLEARANCES.
 10. MOUNT 48" AFF.
 11. 2.4 (6P-4A).
 12. 4 (EMC-4E).
 13. 4 (EMC-4E).
 14. 6 (EMC-4E).
 15. 7 (EMC-4E).
 16. 8 (EMC-4E).
 17. 9 (EMC-4E).
 18. TO 1P-15A CB.
 19. 1 (EMC-4E). MAKE CONNECTION TO BOILER #1 EXHAUST FAN.
 20. 2 (EMC-4E). MAKE CONNECTION TO BOILER #2 EXHAUST FAN.
 21. 3P-100A WSS IN MEEM 1 ENCLOSURE. MOUNT AT UNIT.
 22. SEE DETAIL 11/E-13 FOR EXACT LOCATION OF ELECTRICAL EQUIPMENT IN THIS ROOM.
 23. 3P-70A ENCLOSED CB IN MEEM 1 ENCLOSURE FOR ELEVATOR #1 POWER. PRE-THERMAL (HEAT) DETECTOR IN ROOM AND IN ELEVATOR SHAFT.
 24. 3P-70A ENCLOSED CB IN MEEM 1 ENCLOSURE FOR ELEVATOR #2 POWER. PRE-THERMAL (HEAT) DETECTOR IN ROOM AND IN ELEVATOR SHAFT.
 25. 3P-70A ENCLOSED CB IN MEEM 1 ENCLOSURE FOR ELEVATOR #3 POWER. PRE-THERMAL (HEAT) DETECTOR IN ROOM AND IN ELEVATOR SHAFT.
 26. 3P-70A ENCLOSED CB IN MEEM 1 ENCLOSURE FOR ELEVATOR #4 POWER. PRE-THERMAL (HEAT) DETECTOR IN ROOM AND IN ELEVATOR SHAFT.
 27. 3P-70A ENCLOSED CB IN MEEM 1 ENCLOSURE FOR ELEVATOR #5 POWER. PRE-THERMAL (HEAT) DETECTOR IN ROOM AND IN ELEVATOR SHAFT.
 28. 3P-70A ENCLOSED CB IN MEEM 1 ENCLOSURE FOR ELEVATOR #6 POWER. PRE-THERMAL (HEAT) DETECTOR IN ROOM AND IN ELEVATOR SHAFT.
 29. 3P-70A ENCLOSED CB IN MEEM 1 ENCLOSURE FOR ELEVATOR #7 POWER. PRE-THERMAL (HEAT) DETECTOR IN ROOM AND IN ELEVATOR SHAFT.
 30. 3P-70A ENCLOSED CB IN MEEM 1 ENCLOSURE FOR ELEVATOR #8 POWER. PRE-THERMAL (HEAT) DETECTOR IN ROOM AND IN ELEVATOR SHAFT.
 31. 3P-70A ENCLOSED CB IN MEEM 1 ENCLOSURE FOR ELEVATOR #9 POWER. PRE-THERMAL (HEAT) DETECTOR IN ROOM AND IN ELEVATOR SHAFT.
 32. 3P-70A ENCLOSED CB IN MEEM 1 ENCLOSURE FOR ELEVATOR #10 POWER. PRE-THERMAL (HEAT) DETECTOR IN ROOM AND IN ELEVATOR SHAFT.
 33. 3P-70A ENCLOSED CB IN MEEM 1 ENCLOSURE FOR ELEVATOR #11 POWER. PRE-THERMAL (HEAT) DETECTOR IN ROOM AND IN ELEVATOR SHAFT.
 34. 3P-70A ENCLOSED CB IN MEEM 1 ENCLOSURE FOR ELEVATOR #12 POWER. PRE-THERMAL (HEAT) DETECTOR IN ROOM AND IN ELEVATOR SHAFT.
 35. 3P-70A ENCLOSED CB IN MEEM 1 ENCLOSURE FOR ELEVATOR #13 POWER. PRE-THERMAL (HEAT) DETECTOR IN ROOM AND IN ELEVATOR SHAFT.
 36. 3P-70A ENCLOSED CB IN MEEM 1 ENCLOSURE FOR ELEVATOR #14 POWER. PRE-THERMAL (HEAT) DETECTOR IN ROOM AND IN ELEVATOR SHAFT.
 37. 3P-70A ENCLOSED CB IN MEEM 1 ENCLOSURE FOR ELEVATOR #15 POWER. PRE-THERMAL (HEAT) DETECTOR IN ROOM AND IN ELEVATOR SHAFT.
 38. 3P-70A ENCLOSED CB IN MEEM 1 ENCLOSURE FOR ELEVATOR #16 POWER. PRE-THERMAL (HEAT) DETECTOR IN ROOM AND IN ELEVATOR SHAFT.
 39. 3P-70A ENCLOSED CB IN MEEM 1 ENCLOSURE FOR ELEVATOR #17 POWER. PRE-THERMAL (HEAT) DETECTOR IN ROOM AND IN ELEVATOR SHAFT.
 40. 3P-70A ENCLOSED CB IN MEEM 1 ENCLOSURE FOR ELEVATOR #18 POWER. PRE-THERMAL (HEAT) DETECTOR IN ROOM AND IN ELEVATOR SHAFT.
 41. 3P-70A ENCLOSED CB IN MEEM 1 ENCLOSURE FOR ELEVATOR #19 POWER. PRE-THERMAL (HEAT) DETECTOR IN ROOM AND IN ELEVATOR SHAFT.
 42. 3P-70A ENCLOSED CB IN MEEM 1 ENCLOSURE FOR ELEVATOR #20 POWER. PRE-THERMAL (HEAT) DETECTOR IN ROOM AND IN ELEVATOR SHAFT.
 43. 3P-70A ENCLOSED CB IN MEEM 1 ENCLOSURE FOR ELEVATOR #21 POWER. PRE-THERMAL (HEAT) DETECTOR IN ROOM AND IN ELEVATOR SHAFT.
 44. 3P-70A ENCLOSED CB IN MEEM 1 ENCLOSURE FOR ELEVATOR #22 POWER. PRE-THERMAL (HEAT) DETECTOR IN ROOM AND IN ELEVATOR SHAFT.
 45. 3P-70A ENCLOSED CB IN MEEM 1 ENCLOSURE FOR ELEVATOR #23 POWER. PRE-THERMAL (HEAT) DETECTOR IN ROOM AND IN ELEVATOR SHAFT.
 46. 3P-70A ENCLOSED CB IN MEEM 1 ENCLOSURE FOR ELEVATOR #24 POWER. PRE-THERMAL (HEAT) DETECTOR IN ROOM AND IN ELEVATOR SHAFT.
 47. 3P-70A ENCLOSED CB IN MEEM 1 ENCLOSURE FOR ELEVATOR #25 POWER. PRE-THERMAL (HEAT) DETECTOR IN ROOM AND IN ELEVATOR SHAFT.
 48. 3P-70A ENCLOSED CB IN MEEM 1 ENCLOSURE FOR ELEVATOR #26 POWER. PRE-THERMAL (HEAT) DETECTOR IN ROOM AND IN ELEVATOR SHAFT.
 49. 3P-70A ENCLOSED CB IN MEEM 1 ENCLOSURE FOR ELEVATOR #27 POWER. PRE-THERMAL (HEAT) DETECTOR IN ROOM AND IN ELEVATOR SHAFT.
 50. 3P-70A ENCLOSED CB IN MEEM 1 ENCLOSURE FOR ELEVATOR #28 POWER. PRE-THERMAL (HEAT) DETECTOR IN ROOM AND IN ELEVATOR SHAFT.
 51. 3P-70A ENCLOSED CB IN MEEM 1 ENCLOSURE FOR ELEVATOR #29 POWER. PRE-THERMAL (HEAT) DETECTOR IN ROOM AND IN ELEVATOR SHAFT.
 52. 3P-70A ENCLOSED CB IN MEEM 1 ENCLOSURE FOR ELEVATOR #30 POWER. PRE-THERMAL (HEAT) DETECTOR IN ROOM AND IN ELEVATOR SHAFT.
 53. 3P-70A ENCLOSED CB IN MEEM 1 ENCLOSURE FOR ELEVATOR #31 POWER. PRE-THERMAL (HEAT) DETECTOR IN ROOM AND IN ELEVATOR SHAFT.
 54. 3P-70A ENCLOSED CB IN MEEM 1 ENCLOSURE FOR ELEVATOR #32 POWER. PRE-THERMAL (HEAT) DETECTOR IN ROOM AND IN ELEVATOR SHAFT.
 55. 3P-70A ENCLOSED CB IN MEEM 1 ENCLOSURE FOR ELEVATOR #33 POWER. PRE-THERMAL (HEAT) DETECTOR IN ROOM AND IN ELEVATOR SHAFT.
 56. 3P-70A ENCLOSED CB IN MEEM 1 ENCLOSURE FOR ELEVATOR #34 POWER. PRE-THERMAL (HEAT) DETECTOR IN ROOM AND IN ELEVATOR SHAFT.
 57. 3P-70A ENCLOSED CB IN MEEM 1 ENCLOSURE FOR ELEVATOR #35 POWER. PRE-THERMAL (HEAT) DETECTOR IN ROOM AND IN ELEVATOR SHAFT.
 58. 3P-70A ENCLOSED CB IN MEEM 1 ENCLOSURE FOR ELEVATOR #36 POWER. PRE-THERMAL (HEAT) DETECTOR IN ROOM AND IN ELEVATOR SHAFT.
 59. 3P-70A ENCLOSED CB IN MEEM 1 ENCLOSURE FOR ELEVATOR #37 POWER. PRE-THERMAL (HEAT) DETECTOR IN ROOM AND IN ELEVATOR SHAFT.
 60. 3P-70A ENCLOSED CB IN MEEM 1 ENCLOSURE FOR ELEVATOR #38 POWER. PRE-THERMAL (HEAT) DETECTOR IN ROOM AND IN ELEVATOR SHAFT.
 61. 3P-70A ENCLOSED CB IN MEEM 1 ENCLOSURE FOR ELEVATOR #39 POWER. PRE-THERMAL (HEAT) DETECTOR IN ROOM AND IN ELEVATOR SHAFT.
 62. 3P-70A ENCLOSED CB IN MEEM 1 ENCLOSURE FOR ELEVATOR #40 POWER. PRE-THERMAL (HEAT) DETECTOR IN ROOM AND IN ELEVATOR SHAFT.
 63. 3P-70A ENCLOSED CB IN MEEM 1 ENCLOSURE FOR ELEVATOR #41 POWER. PRE-THERMAL (HEAT) DETECTOR IN ROOM AND IN ELEVATOR SHAFT.
 64. 3P-70A ENCLOSED CB IN MEEM 1 ENCLOSURE FOR ELEVATOR #42 POWER. PRE-THERMAL (HEAT) DETECTOR IN ROOM AND IN ELEVATOR SHAFT.
 65. 3P-70A ENCLOSED CB IN MEEM 1 ENCLOSURE FOR ELEVATOR #43 POWER. PRE-THERMAL (HEAT) DETECTOR IN ROOM AND IN ELEVATOR SHAFT.
 66. 3P-70A ENCLOSED CB IN MEEM 1 ENCLOSURE FOR ELEVATOR #44 POWER. PRE-THERMAL (HEAT) DETECTOR IN ROOM AND IN ELEVATOR SHAFT.
 67. 3P-70A ENCLOSED CB IN MEEM 1 ENCLOSURE FOR ELEVATOR #45 POWER. PRE-THERMAL (HEAT) DETECTOR IN ROOM AND IN ELEVATOR SHAFT.
 68. 3P-70A ENCLOSED CB IN MEEM 1 ENCLOSURE FOR ELEVATOR #46 POWER. PRE-THERMAL (HEAT) DETECTOR IN ROOM AND IN ELEVATOR SHAFT.
 69. 3P-70A ENCLOSED CB IN MEEM 1 ENCLOSURE FOR ELEVATOR #47 POWER. PRE-THERMAL (HEAT) DETECTOR IN ROOM AND IN ELEVATOR SHAFT.
 70. 3P-70A ENCLOSED CB IN MEEM 1 ENCLOSURE FOR ELEVATOR #48 POWER. PRE-THERMAL (HEAT) DETECTOR IN ROOM AND IN ELEVATOR SHAFT.
 71. 3P-70A ENCLOSED CB IN MEEM 1 ENCLOSURE FOR ELEVATOR #49 POWER. PRE-THERMAL (HEAT) DETECTOR IN ROOM AND IN ELEVATOR SHAFT.
 72. 3P-70A ENCLOSED CB IN MEEM 1 ENCLOSURE FOR ELEVATOR #50 POWER. PRE-THERMAL (HEAT) DETECTOR IN ROOM AND IN ELEVATOR SHAFT.
 73. 3P-70A ENCLOSED CB IN MEEM 1 ENCLOSURE FOR ELEVATOR #51 POWER. PRE-THERMAL (HEAT) DETECTOR IN ROOM AND IN ELEVATOR SHAFT.
 74. 3P-70A ENCLOSED CB IN MEEM 1 ENCLOSURE FOR ELEVATOR #52 POWER. PRE-THERMAL (HEAT) DETECTOR IN ROOM AND IN ELEVATOR SHAFT.
 75. 3P-70A ENCLOSED CB IN MEEM 1 ENCLOSURE FOR ELEVATOR #53 POWER. PRE-THERMAL (HEAT) DETECTOR IN ROOM AND IN ELEVATOR SHAFT.
 76. 3P-70A ENCLOSED CB IN MEEM 1 ENCLOSURE FOR ELEVATOR #54 POWER. PRE-THERMAL (HEAT) DETECTOR IN ROOM AND IN ELEVATOR SHAFT.
 77. 3P-70A ENCLOSED CB IN MEEM 1 ENCLOSURE FOR ELEVATOR #55 POWER. PRE-THERMAL (HEAT) DETECTOR IN ROOM AND IN ELEVATOR SHAFT.
 78. 3P-70A ENCLOSED CB IN MEEM 1 ENCLOSURE FOR ELEVATOR #56 POWER. PRE-THERMAL (HEAT) DETECTOR IN ROOM AND IN ELEVATOR SHAFT.
 79. 3P-70A ENCLOSED CB IN MEEM 1 ENCLOSURE FOR ELEVATOR #57 POWER. PRE-THERMAL (HEAT) DETECTOR IN ROOM AND IN ELEVATOR SHAFT.
 80. 3P-70A ENCLOSED CB IN MEEM 1 ENCLOSURE FOR ELEVATOR #58 POWER. PRE-THERMAL (HEAT) DETECTOR IN ROOM AND IN ELEVATOR SHAFT.
 81. 3P-70A ENCLOSED CB IN MEEM 1 ENCLOSURE FOR ELEVATOR #59 POWER. PRE-THERMAL (HEAT) DETECTOR IN ROOM AND IN ELEVATOR SHAFT.
 82. 3P-70A ENCLOSED CB IN MEEM 1 ENCLOSURE FOR ELEVATOR #60 POWER. PRE-THERMAL (HEAT) DETECTOR IN ROOM AND IN ELEVATOR SHAFT.
 83. 3P-70A ENCLOSED CB IN MEEM 1 ENCLOSURE FOR ELEVATOR #61 POWER. PRE-THERMAL (HEAT) DETECTOR IN ROOM AND IN ELEVATOR SHAFT.
 84. 3P-70A ENCLOSED CB IN MEEM 1 ENCLOSURE FOR ELEVATOR #62 POWER. PRE-THERMAL (HEAT) DETECTOR IN ROOM AND IN ELEVATOR SHAFT.
 85. 3P-70A ENCLOSED CB IN MEEM 1 ENCLOSURE FOR ELEVATOR #63 POWER. PRE-THERMAL (HEAT) DETECTOR IN ROOM AND IN ELEVATOR SHAFT.
 86. 3P-70A ENCLOSED CB IN MEEM 1 ENCLOSURE FOR ELEVATOR #64 POWER. PRE-THERMAL (HEAT) DETECTOR IN ROOM AND IN ELEVATOR SHAFT.
 87. 3P-70A ENCLOSED CB IN MEEM 1 ENCLOSURE FOR ELEVATOR #65 POWER. PRE-THERMAL (HEAT) DETECTOR IN ROOM AND IN ELEVATOR SHAFT.
 88. 3P-70A ENCLOSED CB IN MEEM 1 ENCLOSURE FOR ELEVATOR #66 POWER. PRE-THERMAL (HEAT) DETECTOR IN ROOM AND IN ELEVATOR SHAFT.
 89. 3P-70A ENCLOSED CB IN MEEM 1 ENCLOSURE FOR ELEVATOR #67 POWER. PRE-THERMAL (HEAT) DETECTOR IN ROOM AND IN ELEVATOR SHAFT.
 90. 3P-70A ENCLOSED CB IN MEEM 1 ENCLOSURE FOR ELEVATOR #68 POWER. PRE-THERMAL (HEAT) DETECTOR IN ROOM AND IN ELEVATOR SHAFT.
 91. 3P-70A ENCLOSED CB IN MEEM 1 ENCLOSURE FOR ELEVATOR #69 POWER. PRE-THERMAL (HEAT) DETECTOR IN ROOM AND IN ELEVATOR SHAFT.
 92. 3P-70A ENCLOSED CB IN MEEM 1 ENCLOSURE FOR ELEVATOR #70 POWER. PRE-THERMAL (HEAT) DETECTOR IN ROOM AND IN ELEVATOR SHAFT.
 93. 3P-70A ENCLOSED CB IN MEEM 1 ENCLOSURE FOR ELEVATOR #71 POWER. PRE-THERMAL (HEAT) DETECTOR IN ROOM AND IN ELEVATOR SHAFT.
 94. 3P-70A ENCLOSED CB IN MEEM 1 ENCLOSURE FOR ELEVATOR #72 POWER. PRE-THERMAL (HEAT) DETECTOR IN ROOM AND IN ELEVATOR SHAFT.
 95. 3P-70A ENCLOSED CB IN MEEM 1 ENCLOSURE FOR ELEVATOR #73 POWER. PRE-THERMAL (HEAT) DETECTOR IN ROOM AND IN ELEVATOR SHAFT.
 96. 3P-70A ENCLOSED CB IN MEEM 1 ENCLOSURE FOR ELEVATOR #74 POWER. PRE-THERMAL (HEAT) DETECTOR IN ROOM AND IN ELEVATOR SHAFT.
 97. 3P-70A ENCLOSED CB IN MEEM 1 ENCLOSURE FOR ELEVATOR #75 POWER. PRE-THERMAL (HEAT) DETECTOR IN ROOM AND IN ELEVATOR SHAFT.
 98. 3P-70A ENCLOSED CB IN MEEM 1 ENCLOSURE FOR ELEVATOR #76 POWER. PRE-THERMAL (HEAT) DETECTOR IN ROOM AND IN ELEVATOR SHAFT.
 99. 3P-70A ENCLOSED CB IN MEEM 1 ENCLOSURE FOR ELEVATOR #77 POWER. PRE-THERMAL (HEAT) DETECTOR IN ROOM AND IN ELEVATOR SHAFT.
 100. 3P-70A ENCLOSED CB IN MEEM 1 ENCLOSURE FOR ELEVATOR #78 POWER. PRE-THERMAL (HEAT) DETECTOR IN ROOM AND IN ELEVATOR SHAFT.
 101. 3P-70A ENCLOSED CB IN MEEM 1 ENCLOSURE FOR ELEVATOR #79 POWER. PRE-THERMAL (HEAT) DETECTOR IN ROOM AND IN ELEVATOR SHAFT.
 102. 3P-70A ENCLOSED CB IN MEEM 1 ENCLOSURE FOR ELEVATOR #80 POWER. PRE-THERMAL (HEAT) DETECTOR IN ROOM AND IN ELEVATOR SHAFT.
 103. 3P-70A ENCLOSED CB IN MEEM 1 ENCLOSURE FOR ELEVATOR #81 POWER. PRE-THERMAL (HEAT) DETECTOR IN ROOM AND IN ELEVATOR SHAFT.
 104. 3P-70A ENCLOSED CB IN MEEM 1 ENCLOSURE FOR ELEVATOR #82 POWER. PRE-THERMAL (HEAT) DETECTOR IN ROOM AND IN ELEVATOR SHAFT.
 105. 3P-70A ENCLOSED CB IN MEEM 1 ENCLOSURE FOR ELEVATOR #83 POWER. PRE-THERMAL (HEAT) DETECTOR IN ROOM AND IN ELEVATOR SHAFT.
 106. 3P-70A ENCLOSED CB IN MEEM 1 ENCLOSURE FOR ELEVATOR #84 POWER. PRE-THERMAL (HEAT) DETECTOR IN ROOM AND IN ELEVATOR SHAFT.
 107. 3P-70A ENCLOSED CB IN MEEM 1 ENCLOSURE FOR ELEVATOR #85 POWER. PRE-THERMAL (HEAT) DETECTOR IN ROOM AND IN ELEVATOR SHAFT.
 108. 3P-70A ENCLOSED CB IN MEEM 1 ENCLOSURE FOR ELEVATOR #86 POWER. PRE-THERMAL (HEAT) DETECTOR IN ROOM AND IN ELEVATOR SHAFT.
 109. 3P-70A ENCLOSED CB IN MEEM 1 ENCLOSURE FOR ELEVATOR #87 POWER. PRE-THERMAL (HEAT) DETECTOR IN ROOM AND IN ELEVATOR SHAFT.
 110. 3P-70A ENCLOSED CB IN MEEM 1 ENCLOSURE FOR ELEVATOR #88 POWER. PRE-THERMAL (HEAT) DETECTOR IN ROOM AND IN ELEVATOR SHAFT.
 111. 3P-70A ENCLOSED CB IN MEEM 1 ENCLOSURE FOR ELEVATOR #89 POWER. PRE-THERMAL (HEAT) DETECTOR IN ROOM AND IN ELEVATOR SHAFT.
 112. 3P-70A ENCLOSED CB IN MEEM 1 ENCLOSURE FOR ELEVATOR #90 POWER. PRE-THERMAL (HEAT) DETECTOR IN ROOM AND IN ELEVATOR SHAFT.
 113. 3P-70A ENCLOSED CB IN MEEM 1 ENCLOSURE FOR ELEVATOR #91 POWER. PRE-THERMAL (HEAT) DETECTOR IN ROOM AND IN ELEVATOR SHAFT.
 114. 3P-70A ENCLOSED CB IN MEEM 1 ENCLOSURE FOR ELEVATOR #92 POWER. PRE-THERMAL (HEAT) DETECTOR IN ROOM AND IN ELEVATOR SHAFT.
 115. 3P-70A ENCLOSED CB IN MEEM 1 ENCLOSURE FOR ELEVATOR #93 POWER. PRE-THERMAL (HEAT) DETECTOR IN ROOM AND IN ELEVATOR SHAFT.
 116. 3P-70A ENCLOSED CB IN MEEM 1 ENCLOSURE FOR ELEVATOR #94 POWER. PRE-THERMAL (HEAT) DETECTOR IN ROOM AND IN ELEVATOR SHAFT.
 117. 3P-70A ENCLOSED CB IN MEEM 1 ENCLOSURE FOR ELEVATOR #95 POWER. PRE-THERMAL (HEAT) DETECTOR IN ROOM AND IN ELEVATOR SHAFT.
 118. 3P-70A ENCLOSED CB IN MEEM 1 ENCLOSURE FOR ELEVATOR #96 POWER. PRE-THERMAL (HEAT) DETECTOR IN ROOM AND IN ELEVATOR SHAFT.
 119. 3P-70A ENCLOSED CB IN MEEM 1 ENCLOSURE FOR ELEVATOR #97 POWER. PRE-THERMAL (HEAT) DETECTOR IN ROOM AND IN ELEVATOR SHAFT.
 120. 3P-70A ENCLOSED CB IN MEEM 1 ENCLOSURE FOR ELEVATOR #98 POWER. PRE-THERMAL (HEAT) DETECTOR IN ROOM AND IN ELEVATOR SHAFT.
 121. 3P-70A ENCLOSED CB IN MEEM 1 ENCLOSURE FOR ELEVATOR #99 POWER. PRE-THERMAL (HEAT) DETECTOR IN ROOM AND IN ELEVATOR SHAFT.
 122. 3P-70A ENCLOSED CB IN MEEM 1 ENCLOSURE FOR ELEVATOR #100 POWER. PRE-THERMAL (HEAT) DETECTOR IN ROOM AND IN ELEVATOR SHAFT.

MEZZANINE FLOOR PLAN - POWER & COMMUNICATIONS
SCALE: 1/8"=1'-0"

39. HEAT TRACES 6" CS AND 6" CR LINES.
40. TERMINATE HEAT TRACE CABLE IN GUTTER DOWNSPOUT. CABLE SHALL REACH POINT OF BUILDING PENETRATION BY DOWNSPOUT.
41. GUTTER ICE DETECTOR. SEE DETAIL 6/E-14 AND MANUFACTURER'S RECOMMENDATIONS FOR WIRING.
42. HEAT DETECTOR. 1/2" x 4".
43. HEAT DETECTOR ADJACENT TO SPRINKLER HEAD. CONNECT TO SHUNT TRIP OF ELEVATOR #3 SENSORS CB IN MACHINE ROOM.
44. F88 #8 - 1/4 HP, 120V, 1Ø.
45. 1318P-4E TO 1P-15A CB.
46. 3P-100A WSS IN MEEM 3R ENCLOSURE. MOUNT AT UNIT.
47. 9 (EMC-4E) TO 1P-15A CB.
48. 2-4" STEERS FOR VOICEDATA WIRING. SEE DETAIL 2/E-13.
49. 2" STEER FOR ANTENNA WIRING.
50. FAN #19 - 1/2HP, 120V, 1Ø.
51. 4" STEER FOR SECURITY.
52. FAN #23 - 1/2 HP, 120V, 1Ø.
53. 15 (RP-3E) TO 1P-15A CB.
54. DM #1 - 1/4 HP, 120V, 1Ø.
55. DM #2 - 1/4 HP, 120V, 1Ø.
56. MOUNT AT UNIT.
57. 10, 12 (EP-3A) TO 2-1P-15A CB'S. SEE SPECIAL NOTE #32.
58. CONNECT TO BOILER#CONTROL PANEL FOR BOILER CONTROLS.
59. 5 (RP-4A) TO 1P-15A CB.
60. 17 (RP-4E) TO 1P-15A CB.
61. 1" C. BACK TO "W" BOX. EAST ELECTRICAL CLOSET.
62. JUNCTION BOX FOR MERRITT DOOR CONTACT. MOUNT ABOVE DOOR IN CEILING SPACE. EXACT LOCATION TO BE DETERMINED BY SECURITY MANUFACTURER.
63. LOCATE NEAR ELEVATOR CONTROL AS DIRECTED BY SECURITY MANUFACTURER.
64. 4" STEER FOR SECURITY.

REVISIONS

NO.	DATE	DESCRIPTION
1	1-20-90	ADD #1
2	8/3-90	CONSTRUCTION SET
3	8/14-90	CBE-11

MEZZANINE FLOOR PLAN - POWER AND COMMUNICATIONS

PROJ. NO. 8914.10
DATE 4/11/90
DWG. NO. E-11

BID PACK #3

McCormick & Company
CORPORATE HEADQUARTERS
LOVELTON BUSINESS CENTER
BALTIMORE COUNTY, MARYLAND

Gaudreau, Inc.
Architects/Planners/Engineers
Baltimore

Faisant Associates, Inc.
Mech./Elect. Engineers
Structural Engineers