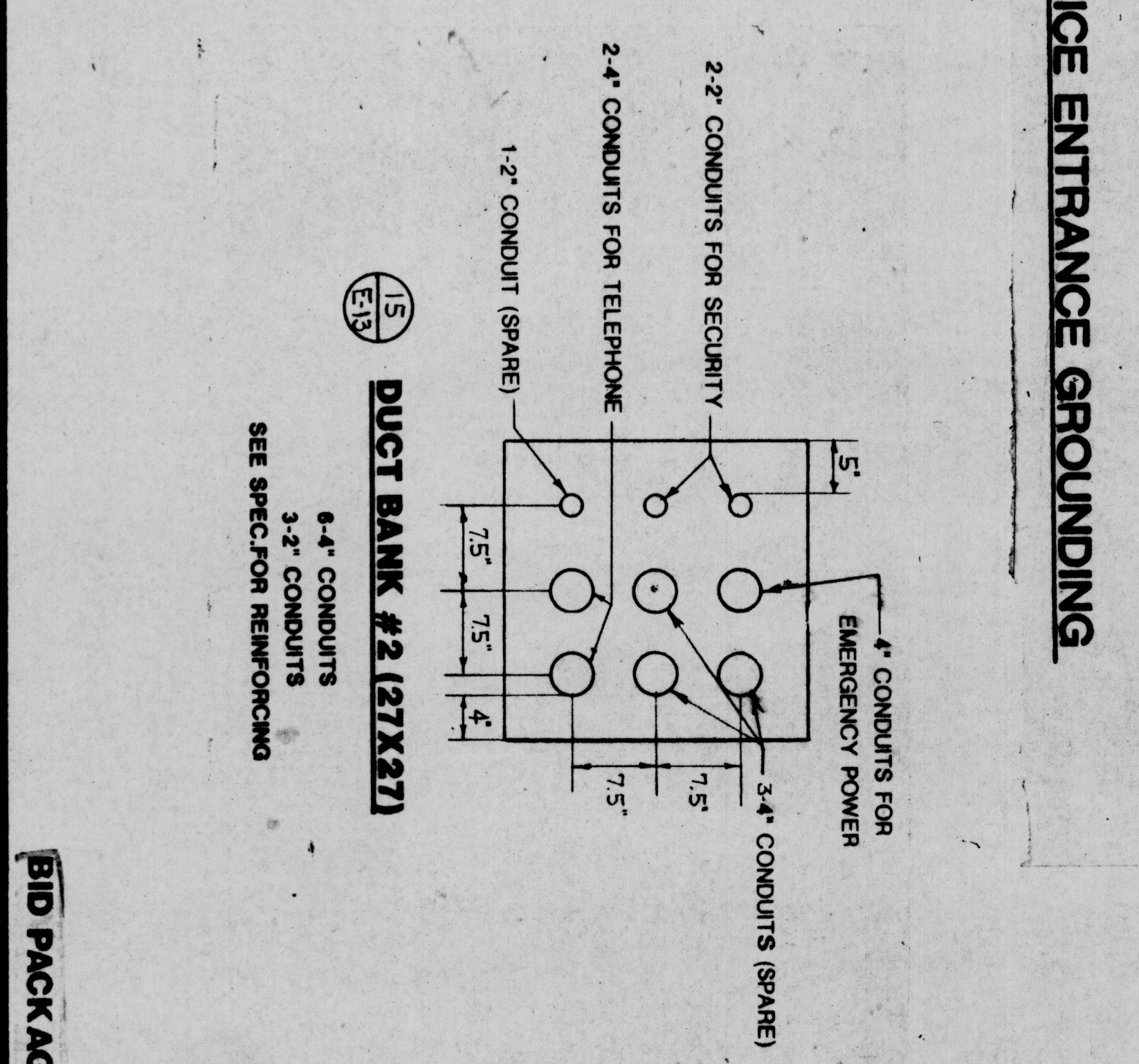
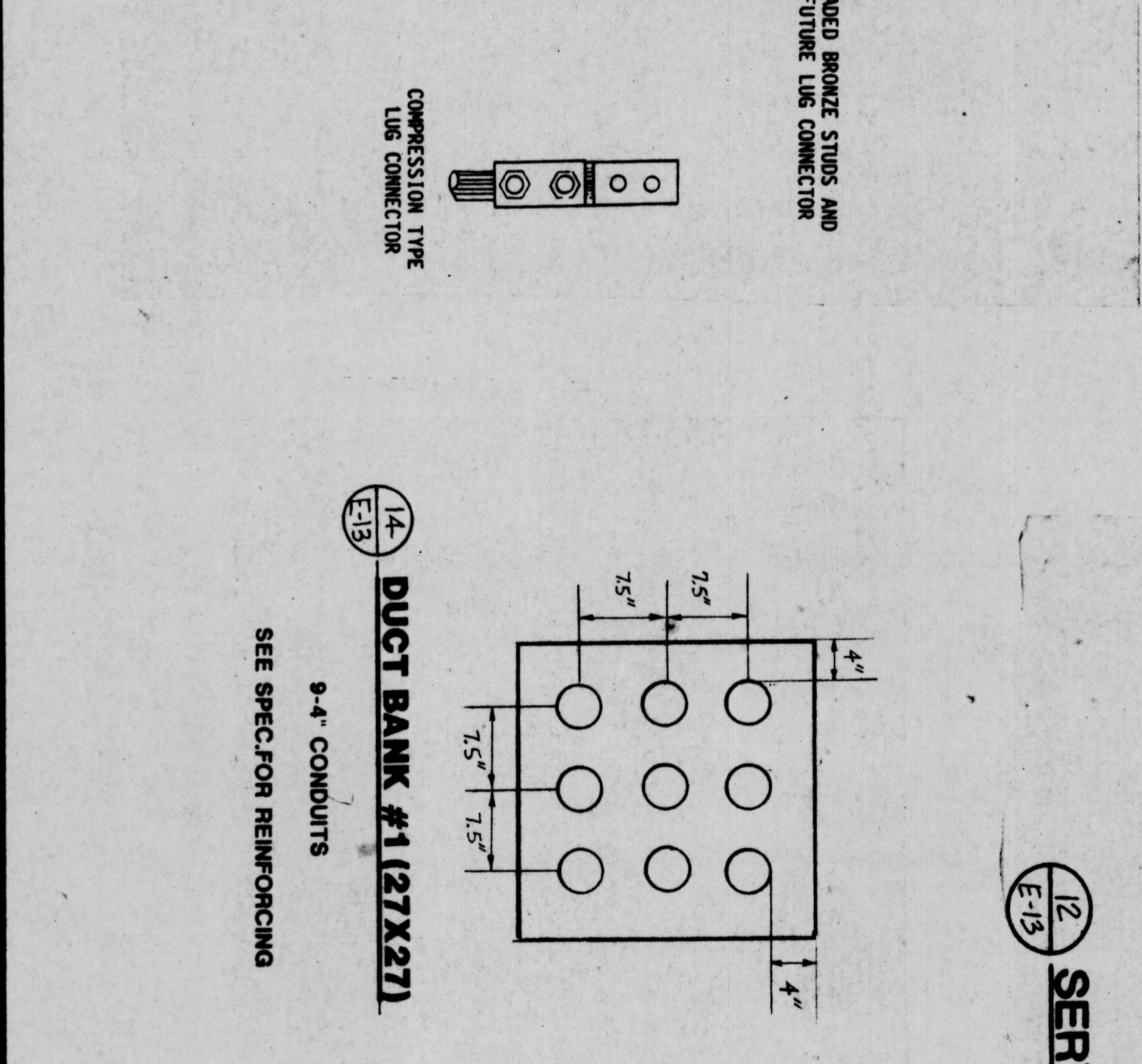
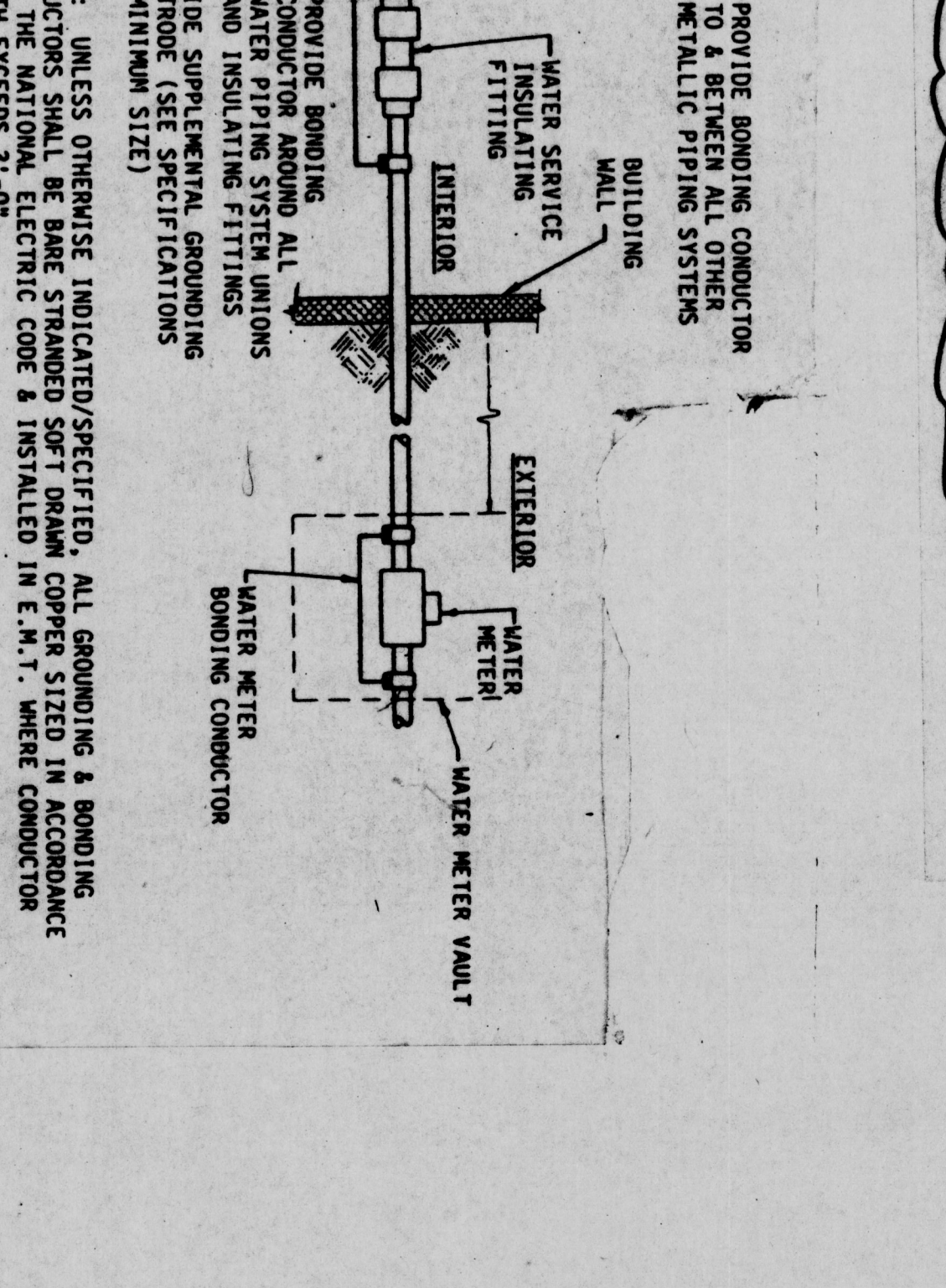
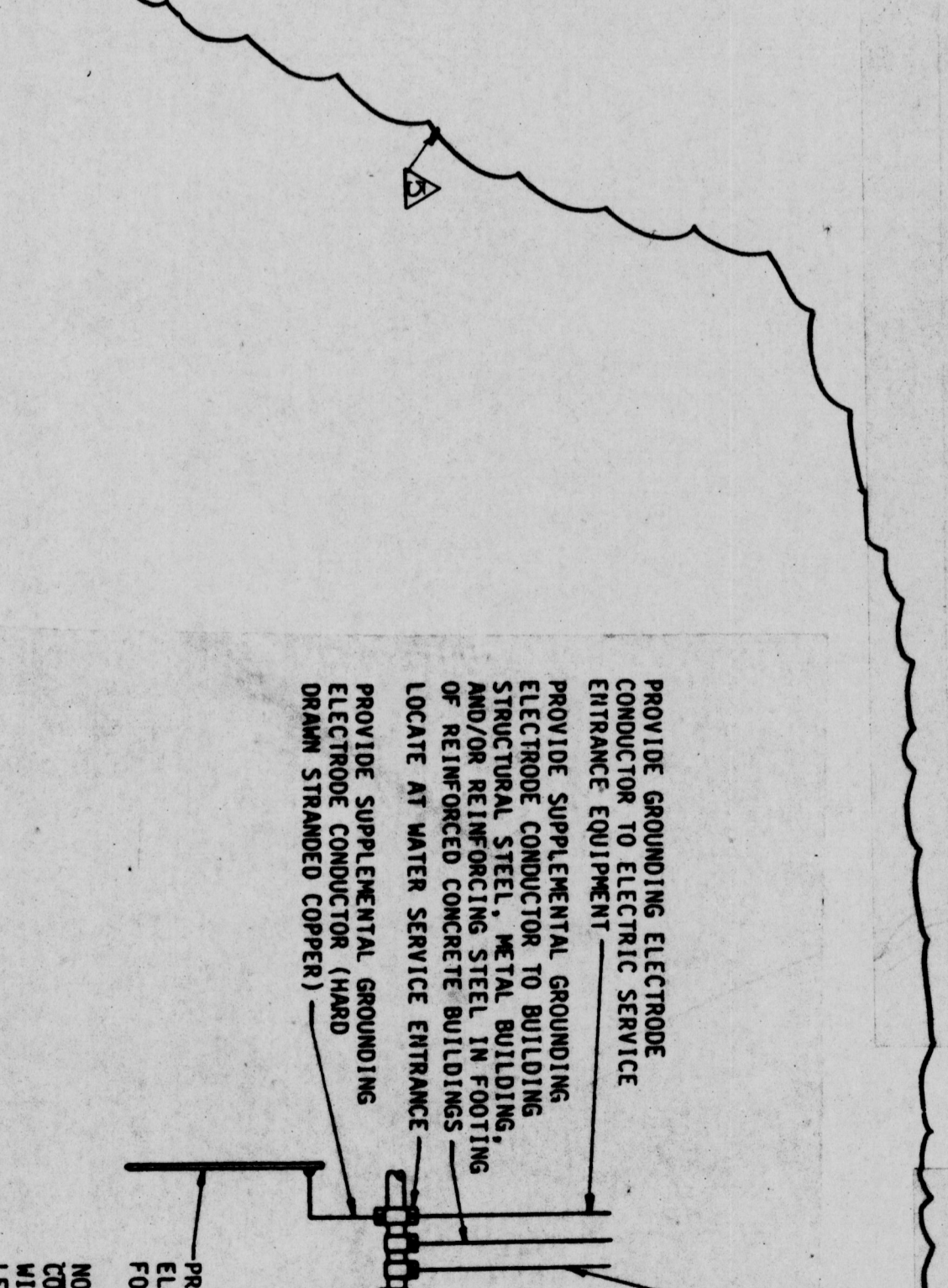
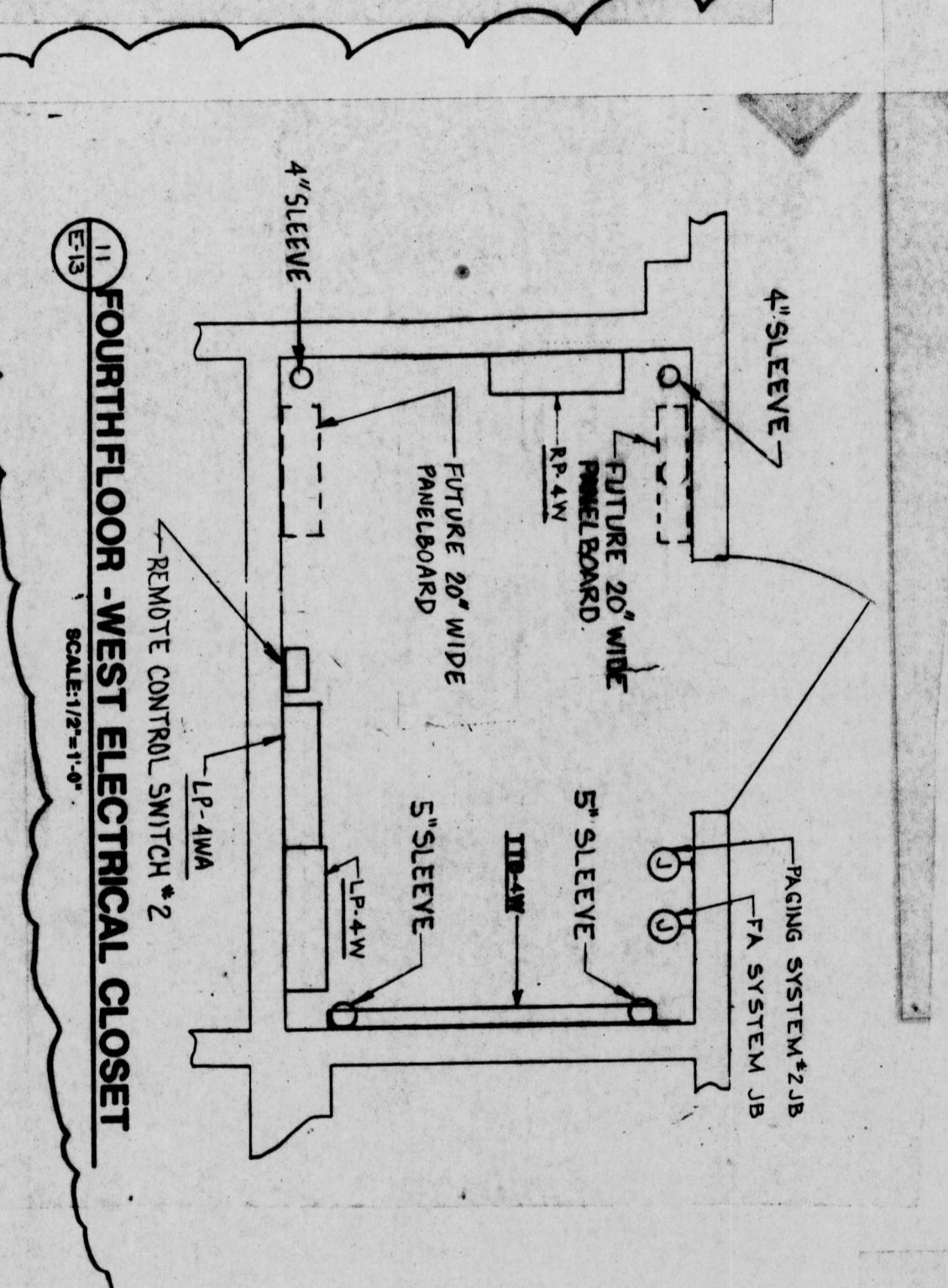
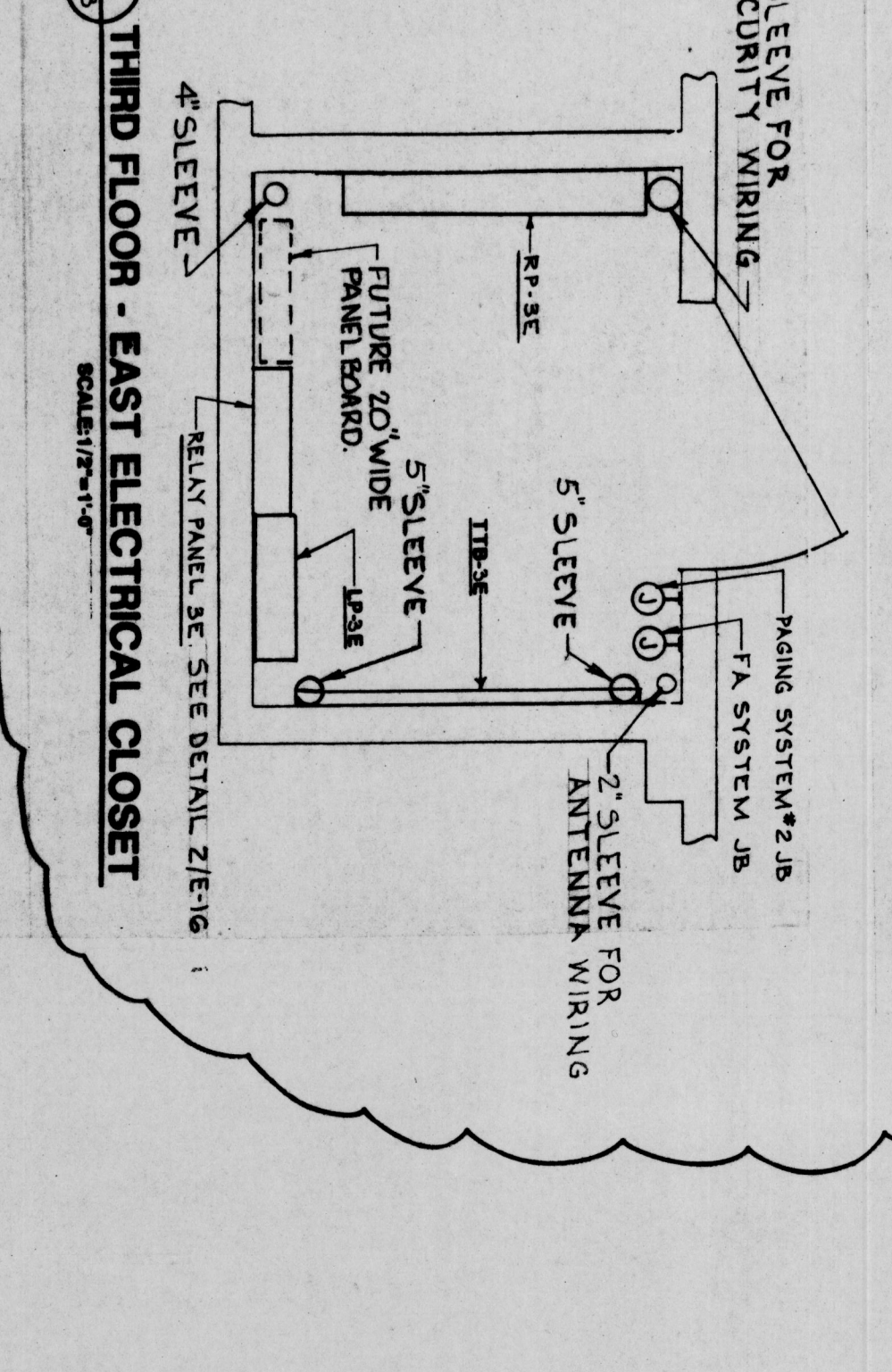
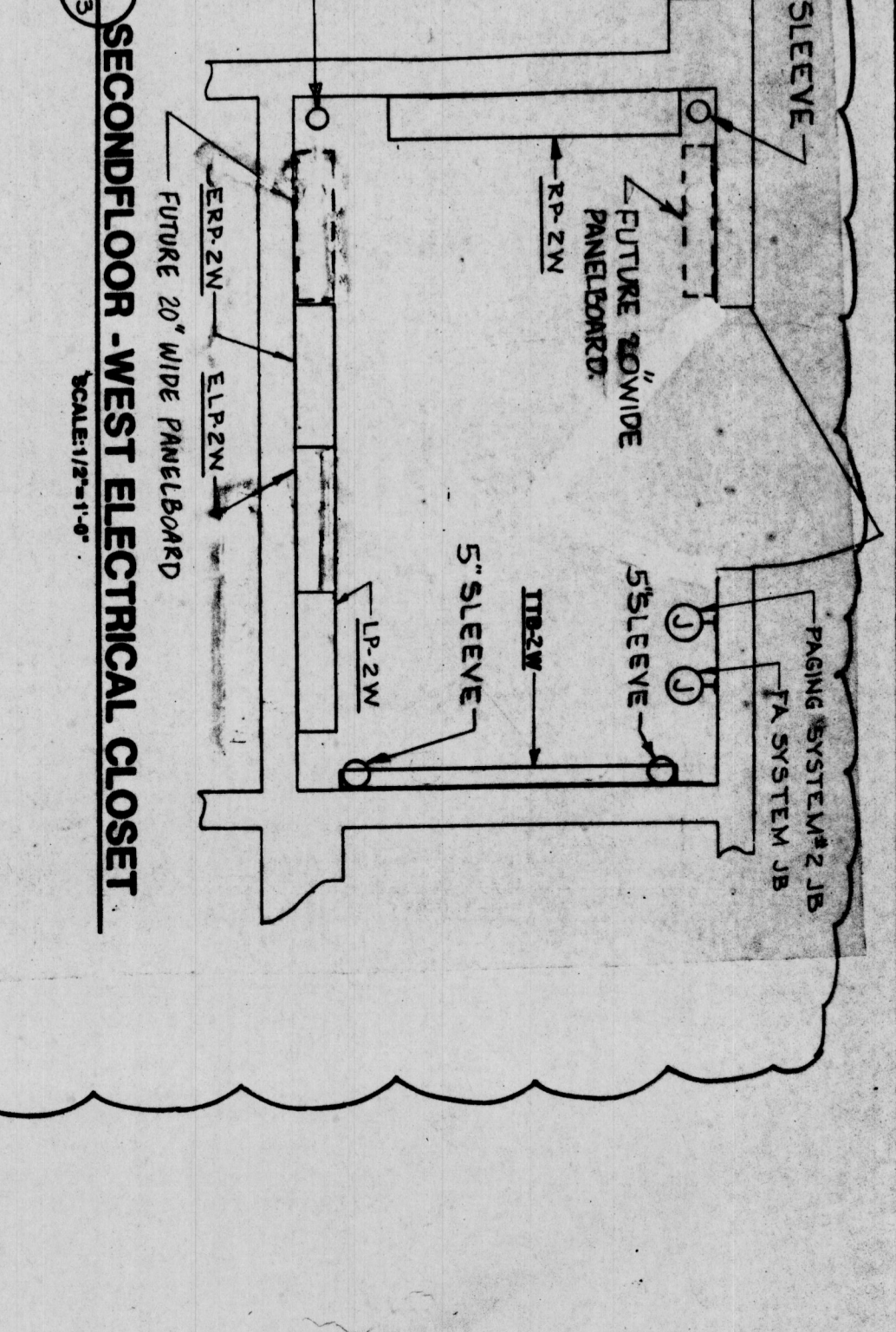
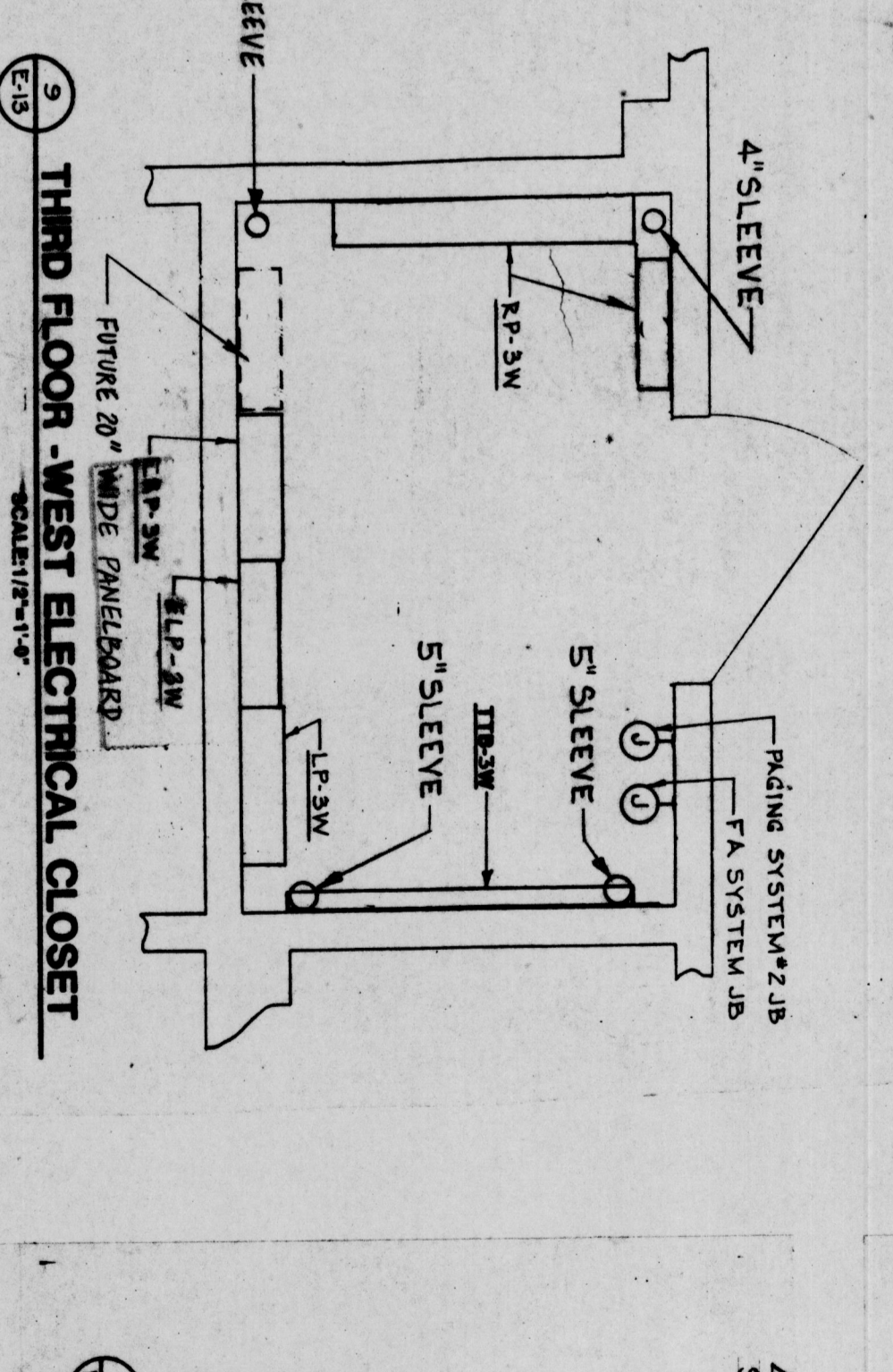
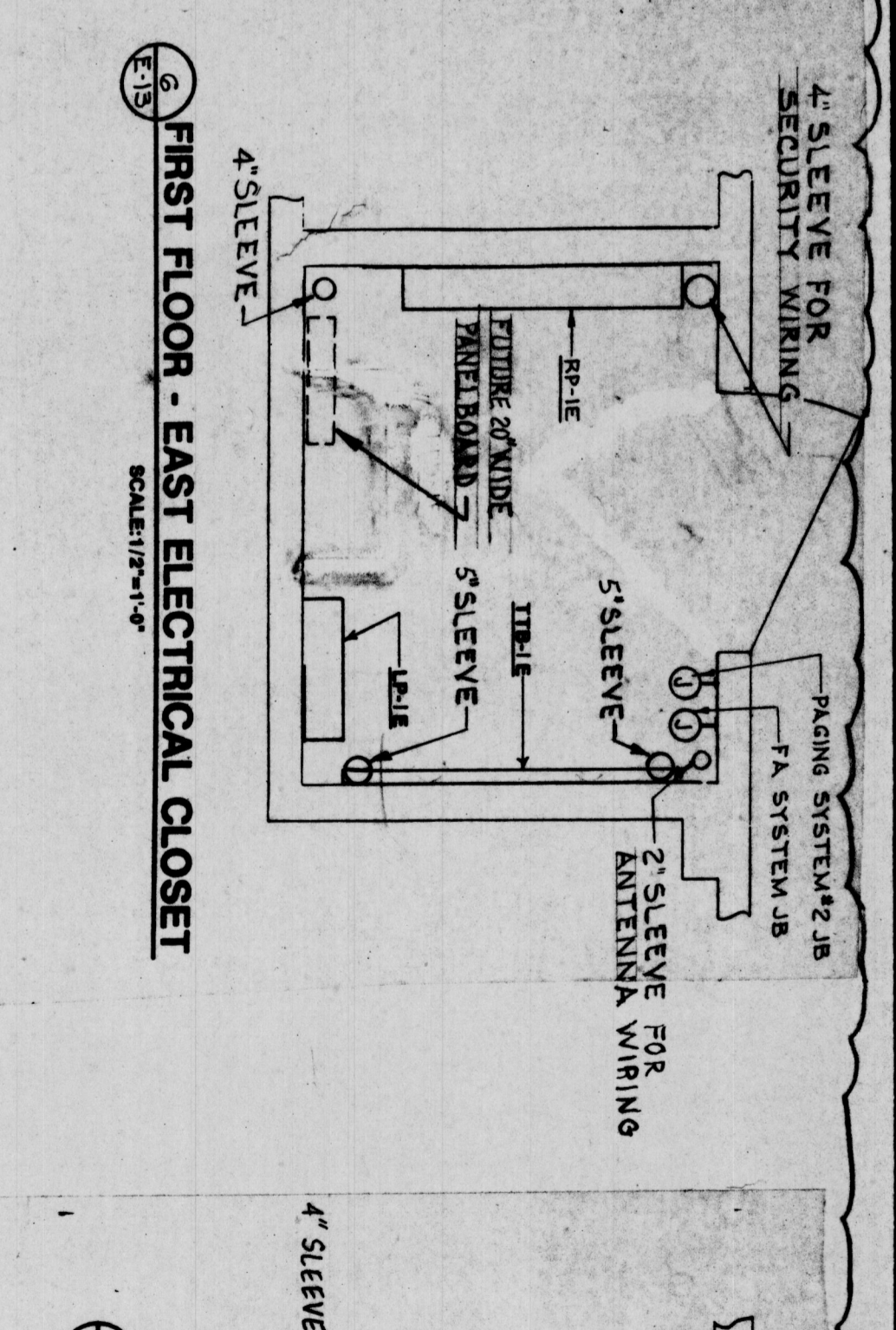
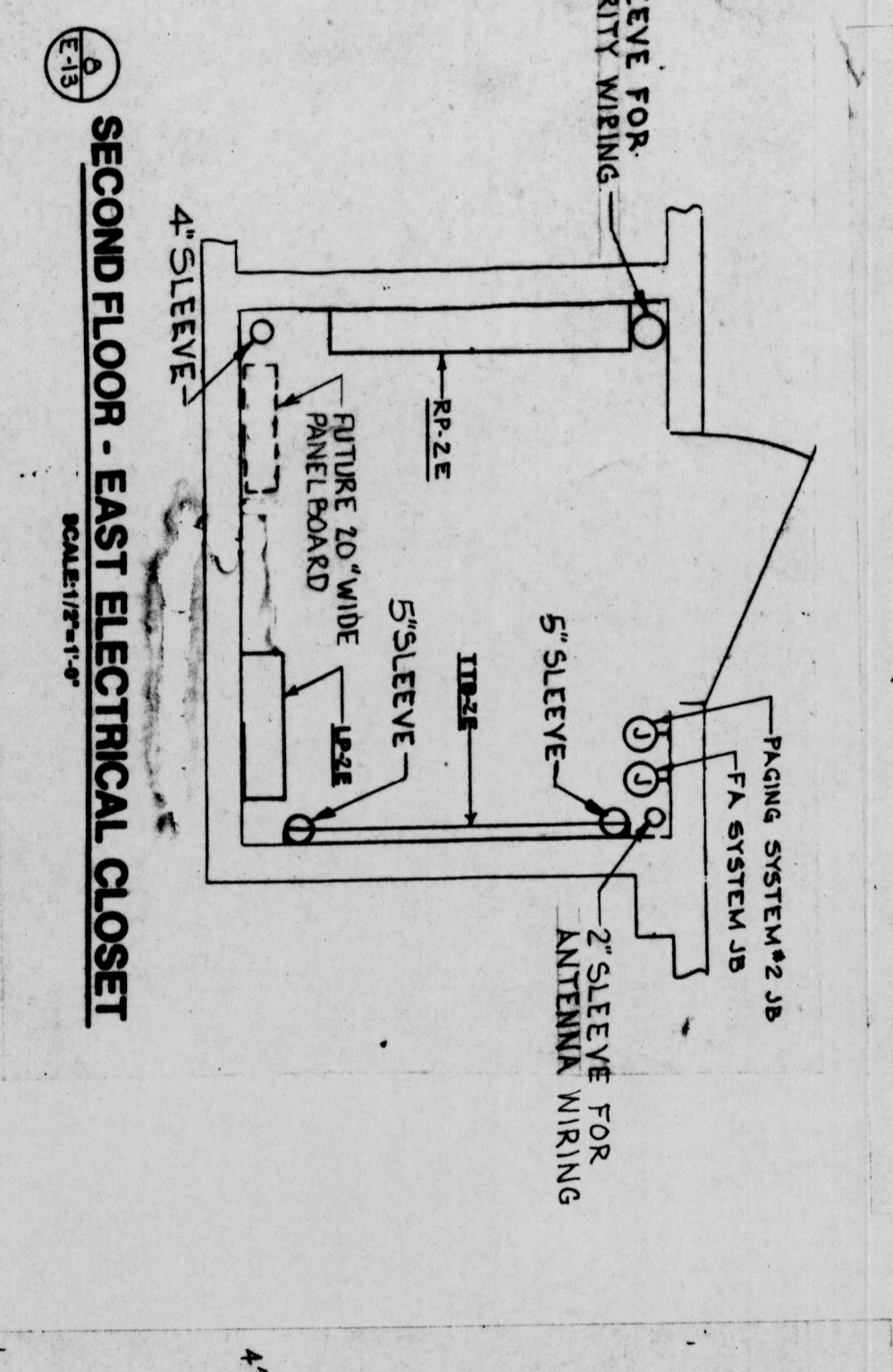
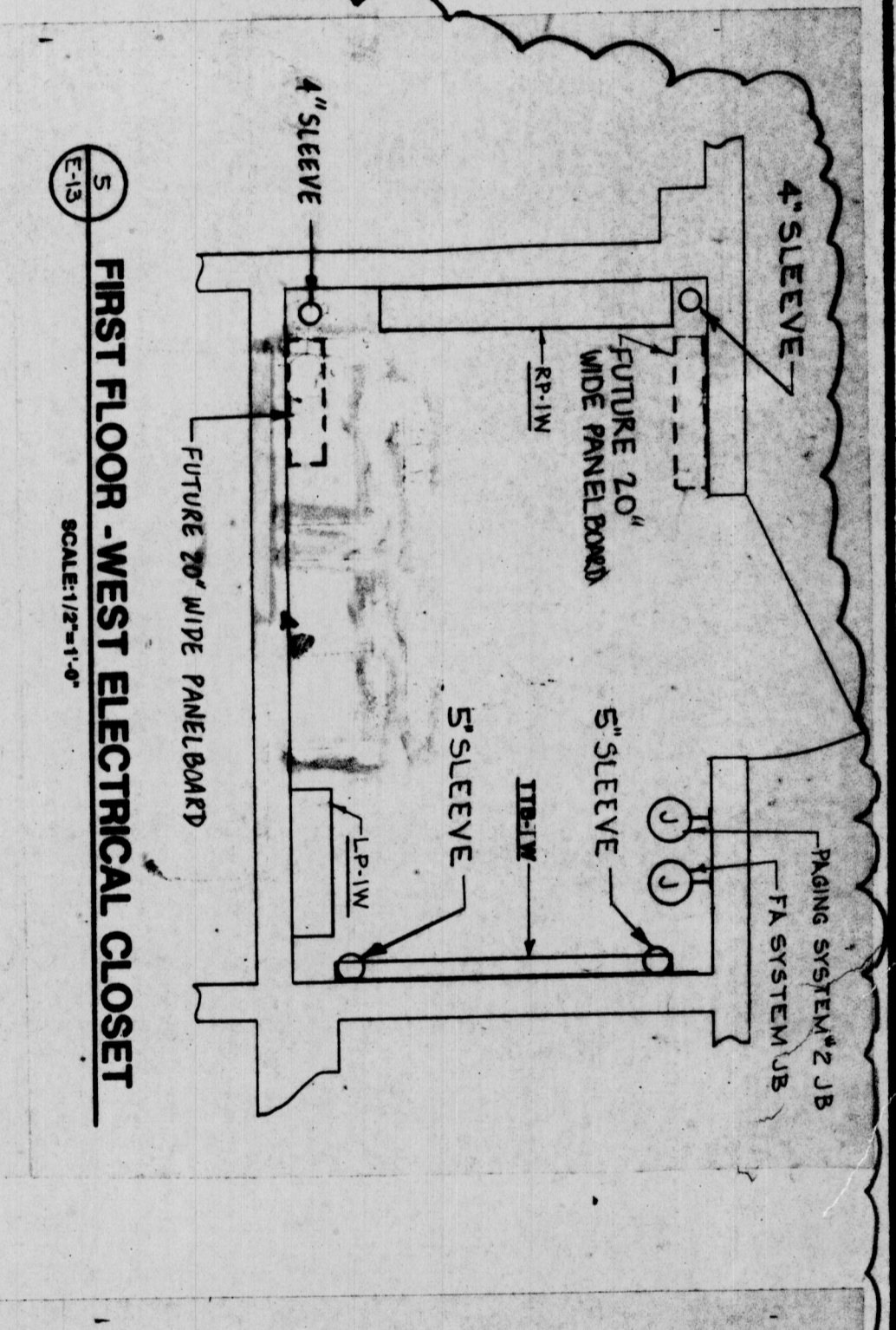
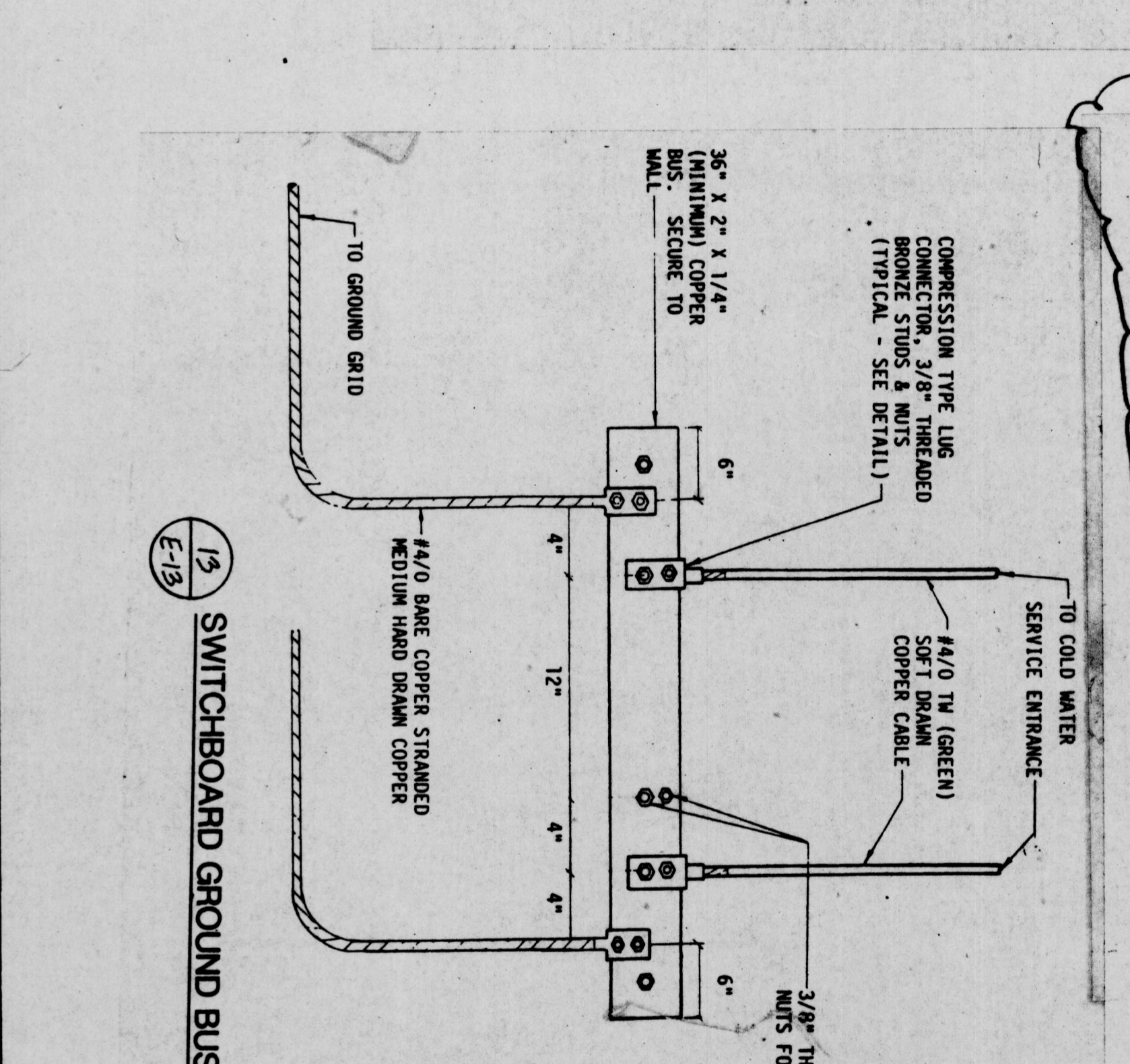
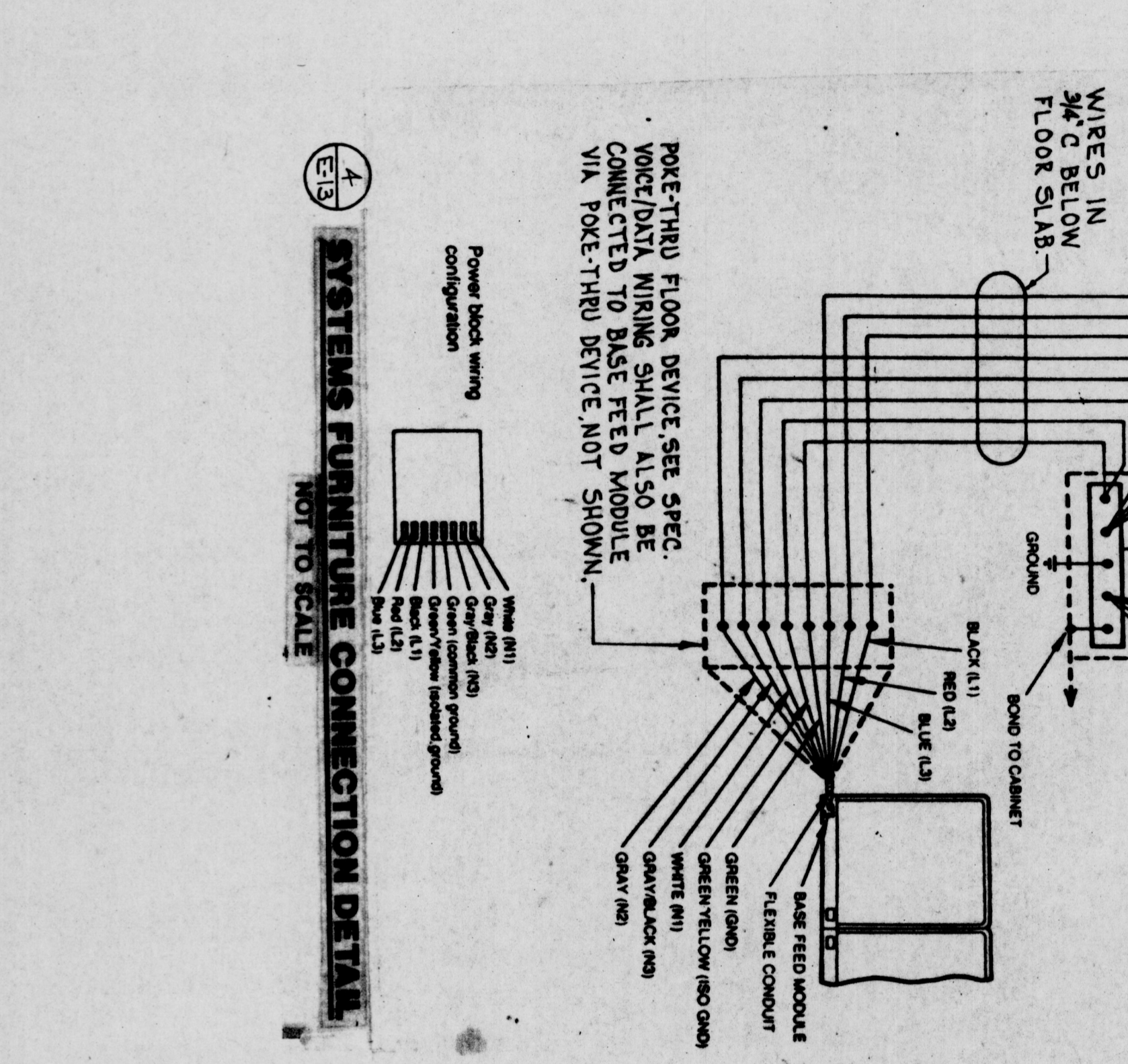
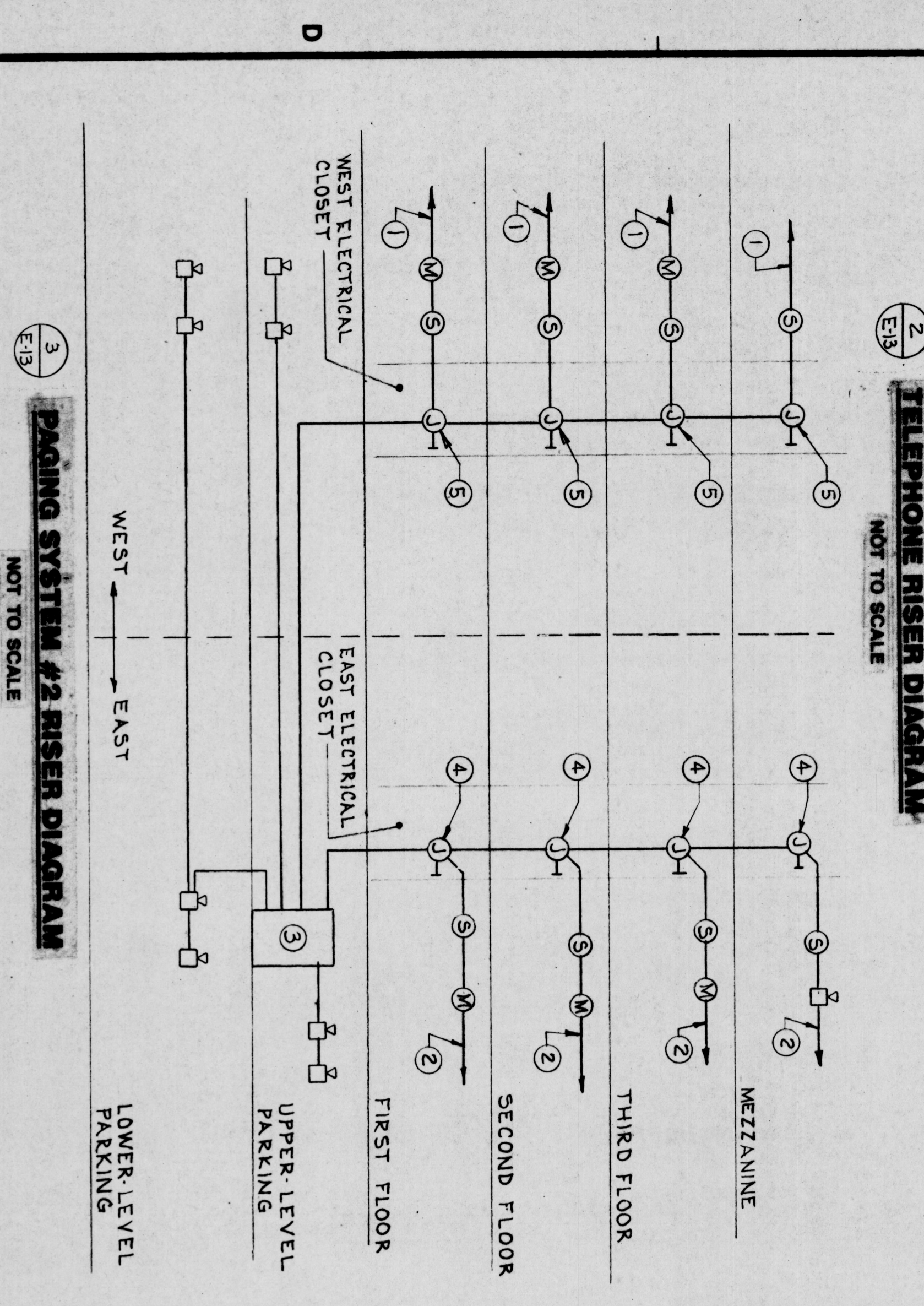
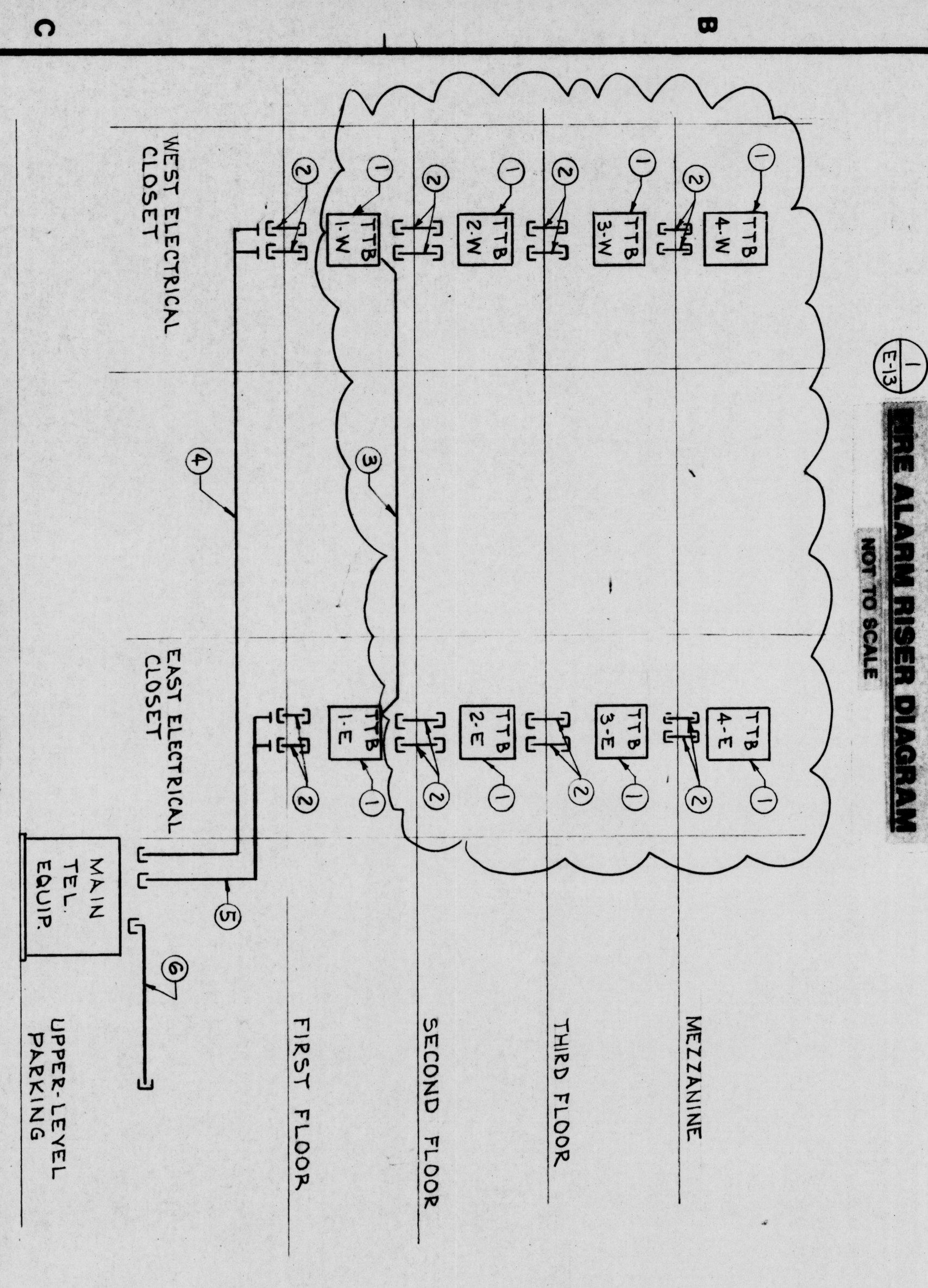


- SPECIAL NOTES:** (APPLICABLE TO DWG. 1/5-13)
- TO OTHER FIRE ALARM DEVICES IN THIS ZONE, TYPICAL FIRE ALARM DEVICES ARE AS SHOWN ON MEZZANINE (WEST) FA ZONE. SEE ZONING SCHEDULE 916-10.
 - TO OTHER FIRE ALARM DEVICES IN THIS ZONE, TYPICAL FIRE ALARM DEVICES ARE AS SHOWN ON LOWER LEVEL PARKING (WEST) FA ZONE. SEE ZONING SCHEDULE 916-6.
 - FA JUNCTION BOX, WALL MOUNTED IN WEST ELECTRICAL SHED 12-17-60.
 - FA JUNCTION BOX, WALL MOUNTED IN EAST ELECTRICAL SHED 12-17-60.
 - FA LED COMMUNICATOR AT GARDNER'S DESK IN LOBBY ON FIRST FLOOR. SEE DWG. E-3 FOR SCHEDULE. ELECTRICAL ROOM SHALL BE NOTED THROUGH 30% AND MAIN 2% C. ASSESS RISK TO FAC2.
- SPECIAL NOTES:** (APPLICABLE TO DWG. 2/5-13)
- 6" H X 4" W X 3/4" D FIRE-RESISTANT TREATED PLWOOD BACKBOARD. SEE FLOOR PLANS FOR LOCATIONS.
 - 2" - 5" SLEEVES, STUD SLEEVES 6" ABOVE AND BELOW FLOOR.
 - 2" - 4" CONDUITS ABOVE CEILING FROM EAST AND WEST ELECTRICAL CLOSETS. BUSH ENDS OF CONDUITS DIRECTLY ABOVE TBS.
 - 2-4" CONDUITS FROM PHONE ROOM TO LOCATION DIRECTLY BELOW 5" SLEEVES TO TBS-1E. SEE DWG. E-2.
 - 4" CONDUITS FROM PHONE ROOM TO LOCATION DIRECTLY BELOW 5" SLEEVES TO E-3.
- SPECIAL NOTES:** (APPLICABLE TO DWG. 3/5-13)
- TO OTHER PAGING SYSTEM SPEAKERS ON WEST SIDE OF FLOOR.
 - TO OTHER PAGING SYSTEM SPEAKERS ON EAST SIDE OF FLOOR.
 - PAGING SYSTEM PACK LOCATED IN MAINTENANCE ROOM ON UPPER LEVEL PARKING.
 - PAGING SYSTEM JUNCTION BOX LOCATED IN EAST ELECTRICAL CLOSET.



Henry Adams, Inc.
Mech./Elect. Engineers

Falsant Associates, Inc.
Structural Engineers

Gaudreau, Inc.
Architectural Engineers

610 Light Street, Baltimore, Maryland 21201

CORPORATE HEADQUARTERS

McCormick & Company

LOVETON BUSINESS CENTER
BALTIMORE COUNTY, MARYLAND

PROJ. NO. 9014.10
DATE 4/11/88

DWG. NO. E-13

13. JOB NO. M017980