

NOTES:

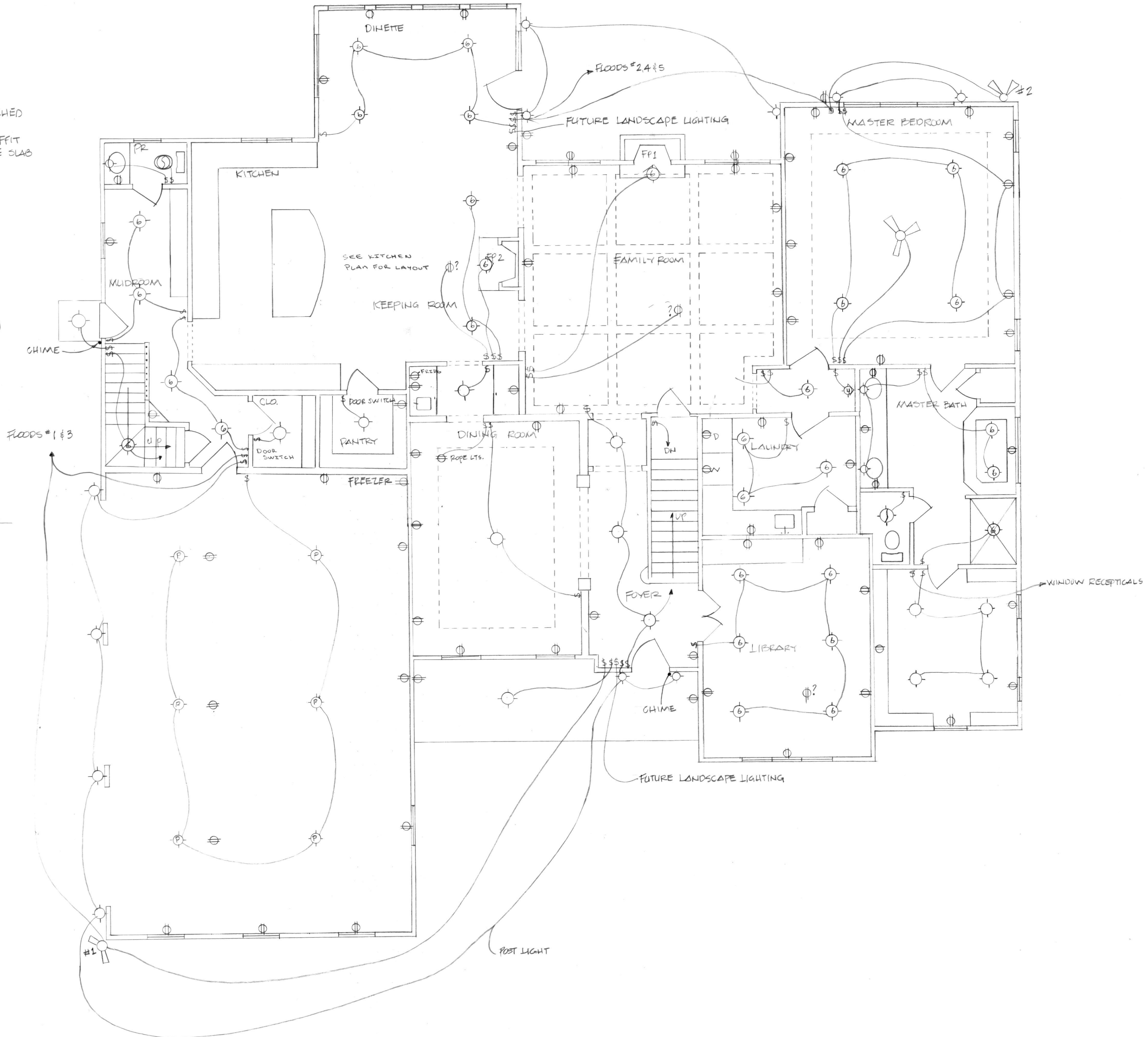
- 1. TOP HALF OF ALL FRONT & RT. SIDE RECEPTALS @ WINDOWS TO BE SWITCHED FROM MASTER CLOSET.
- 2. FLOOD LIGHTS TO BE MOUNTED IN SOFFIT
- 3. EXTERIOR LIGHTS MOUNTED @ 70" ABOVE SLAB OR FIRST FLOOR
- 4. VANITY LIGHTS SET AT 84"

GENERATOR

LIGHTS & RECEPTALS IN RED
 HVAC UNIT #1 (LEFT SIDE FIRST FLOOR)
 KITCHEN REFRIG.
 LIBRARY COMPUTER RECEPTAL
 GARAGE DOOR OPENERS
 HOT WATER HEATER
 WELL
 SECURITY SYSTEM
 TV MASTER BEDROOM

LEGEND

- ⊕ RECEPTAL
- ⊙ SURFACE MOUNT LIGHT
- ⊖ RECESSED LT.
- ⊕ 4" RECESSED
- ⊕ PORCELON
- ⊕ SWITCH
- ⊕ BATH FAN
- ⊕ BATH FAN/LT.
- ⊕ DOOR CHIME
- ⊕ FLOOD LIGHT
- ⊕ ROPE LIGHTS
- ⊕ FAN/LT



WORKMAN RESIDENCE - ELECTRICAL PLAN

DUFFERBECK CONSTRUCTION LLC
 11 THREE SISTERS CT, BALDWIN MD 21013
 410.592.8053