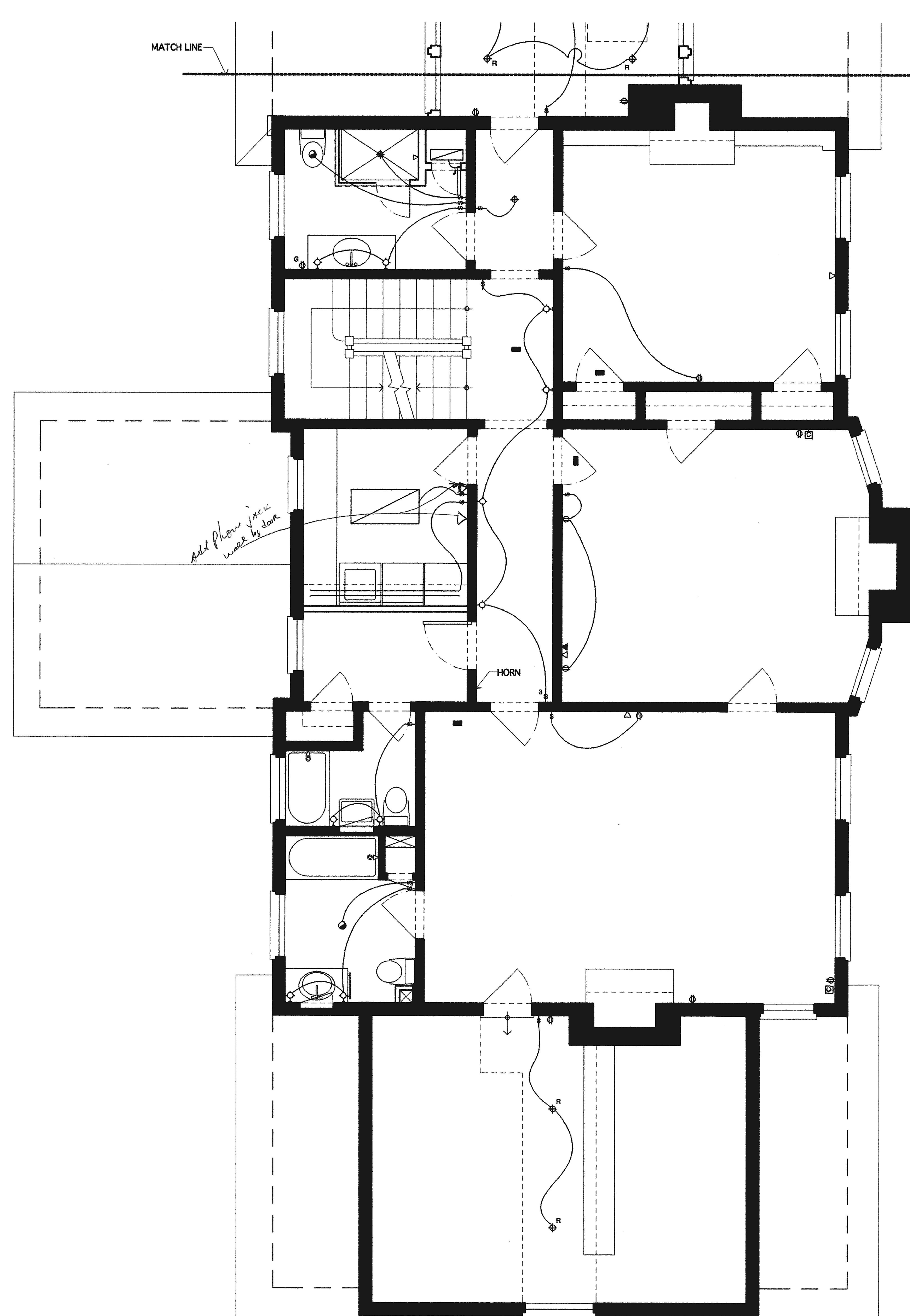


REFLECTED CEILING NOTES

1. SEE INTERIOR ELEVATIONS FOR ADDITIONAL INFORMATION.



ELECTRICAL LEGEND	
SYM	DESCRIPTION
⊕	CLG MOUNTED JUNCTION BOX
EX	EXISTING FIXTURE
⊕	WALL MOUNTED J BOX
R	RECESSED CLG MOUNTED J BOX
LV	LOW VOLTAGE ADJUSTABLE
—	UNDER CABINET LIGHT FIXTURE
⊕	FLUORESCENT LIGHT FIXTURE
⊕	FLOOD LIGHT FIXTURE
⊕	DUPLEX RECEPTACLE
GF	GROUND FAULT
FL	FLOOR MOUNTED
▼	DATA JACK
▼	TELEPHONE JACK
—	WIRING
—	EXISTING WIRING
↑	SWITCH
†	DIMMER
3	THREE WAY SWITCH
4	FOUR WAY SWITCH
J	JAMB SWITCH
⊕	EXHAUST FAN
⊕	EXHAUST FAN W/ LIGHT
⊕	CABLE JACK
⊕	SECURITY / ALARM KEY PAD
⊕	SPEAKER
⊕	DOOR CHIME
⊕	SMOKE DETECTOR

PLAN NOTES

1. EXISTING WIRING, SWITCHES AND RECEPTACLES TO BE REPLACED.
2. EXISTING ELECTRICAL SERVICE TO BE UPGRADED TO MEET THE DEMAND OF FIXTURES, EQUIPMENT AND DEVICES INDICATED WITHIN THE CONSTRUCTION DOCUMENTS.
3. RECESSED FIXTURES TO BE CLEAR ALUMINUM TRIM WITH WHITE FLANGE, ADJUSTABLE LOW VOLTAGE.
4. PLACE ELECTRICAL OUTLETS HORIZONTALLY 1 1/2" OFF FLOOR TO BOTTOM OF BOX UNLESS AT WORK STATIONS OR NOTED OTHERWISE.
5. CONTRACTOR TO INSTALL ALL ELECTRICAL DEVICES AND WIRING AS ACCORDING TO THE APPLICABLE ELECTRICAL CODE AND AS RECOMMENDED BY DEVICE MANUFACTURERS.
6. CONTRACTOR TO VERIFY ALL LOADS PRIOR TO WORK TO ESTABLISH POWER / LIGHTING REQUIREMENTS.
7. SWITCH RECEPTACLE AND FIXTURE LOCATIONS TO BE APPROVED BY ARCHITECT PRIOR TO INSTALLATION.
8. THE COLOR OF ELECTRICAL DEVICES SHALL MATCH THE SURROUNDING SURFACES. VERIFY FINAL SELECTION WITH ARCHITECT PRIOR TO INSTALLATION. A GENERAL COLOR SPECIFICATION SHALL REFER TO GENERAL USE LOCATIONS. HOWEVER CONTRACTOR SHALL CONTACT ARCHITECT WHEN THE GENERAL COLOR SPECIFIED CONFLICTS WITH TYPICAL SURROUNDING AREAS.
9. SWITCHED OUTLETS TO HAVE TOP HALF HOT W/ BOTTOM HALF SWITCHED.
10. COORDINATE ELECTRICAL DEVICE LOCATIONS SHOWN IN CABINETRY W/ INTERIOR ELEVATIONS. CONTRACTOR SHOULD REVIEW INTERIOR ELEVATIONS FOR SCONCE LOCATIONS.
11. FIXTURE HEIGHTS GIVEN ARE TO THE CENTER OF THE JUNCTION BOX.
12. REVIEW DIMMER SWITCH LOCATIONS W/ OWNER & ARCHITECT PRIOR TO INSTALLATION OF SWITCH DEVICES.

ADDITION & RENOVATION FOR

BEHRENS RESIDENCE

7506 LHIRODELLE CLUB ROAD
 RUXTON, MARYLAND 21204

REFLECTED CEILING & ELECTRICAL PLAN

Revisions
 ▲ 01.28.03

Project No. 0109
 Date 08.09.02

2 SECOND FLOOR REFLECTED CEILING PLAN
 SCALE 1/4"=1'-0"

1 SECOND FLOOR ELECTRICAL PLAN
 SCALE 1/4"=1'-0"