

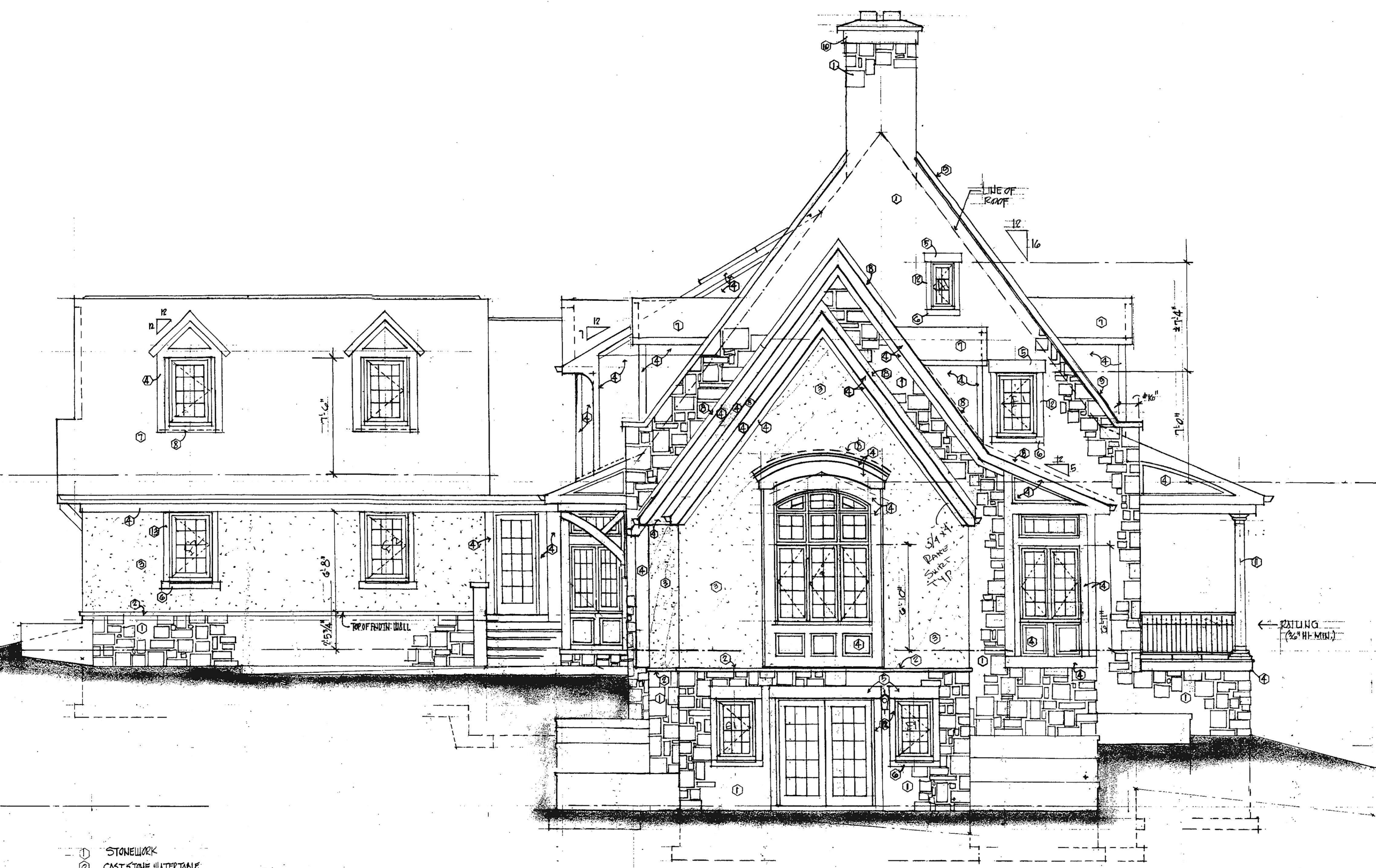
DATES	
12:	JUNE 2000
15:	JULY 2000

PROPOSED NEW SINGLE FAMILY HOME
 THE DRIPPS RESIDENCE
 TOWSON - BALTIMORE COUNTY - MD

KMA - KEVIN MCKENNA ARCHITECTS
 .PO BOX 722 COLUMBIA MD 21045
 TEL: 410.381.5817 FAX: 410.381.0929
 WWW.KVINMCKENNA-ARCHITECT.COM



DRAWN
CHECKED
SCALE
JOB NO.
SHEET
SEVENTEEN
OF SHEETS



- ① STONELWORK
- ② CAST STONE WATERTABLE
- ③ STUCCO
- ④ PTD. WOOD TRIM
- ⑤ CAST STONE LINTEL
- ⑥ CAST STONE SILL
- ⑦ ROOFING - SLATE
- ⑧ FLASHING
- ⑨ CAST STONE COPING
- ⑩ CAST STONE BAND
- ⑪ PTD. WOOD COLUMN
- ⑫ CAST STONE JAMBS
- ⑬ FLAIR STUCCO JAMBS

L E F T S I D E E L E V A T I O N
 1/4" = 1'-0"
 SEE NOTES ON SHEET G