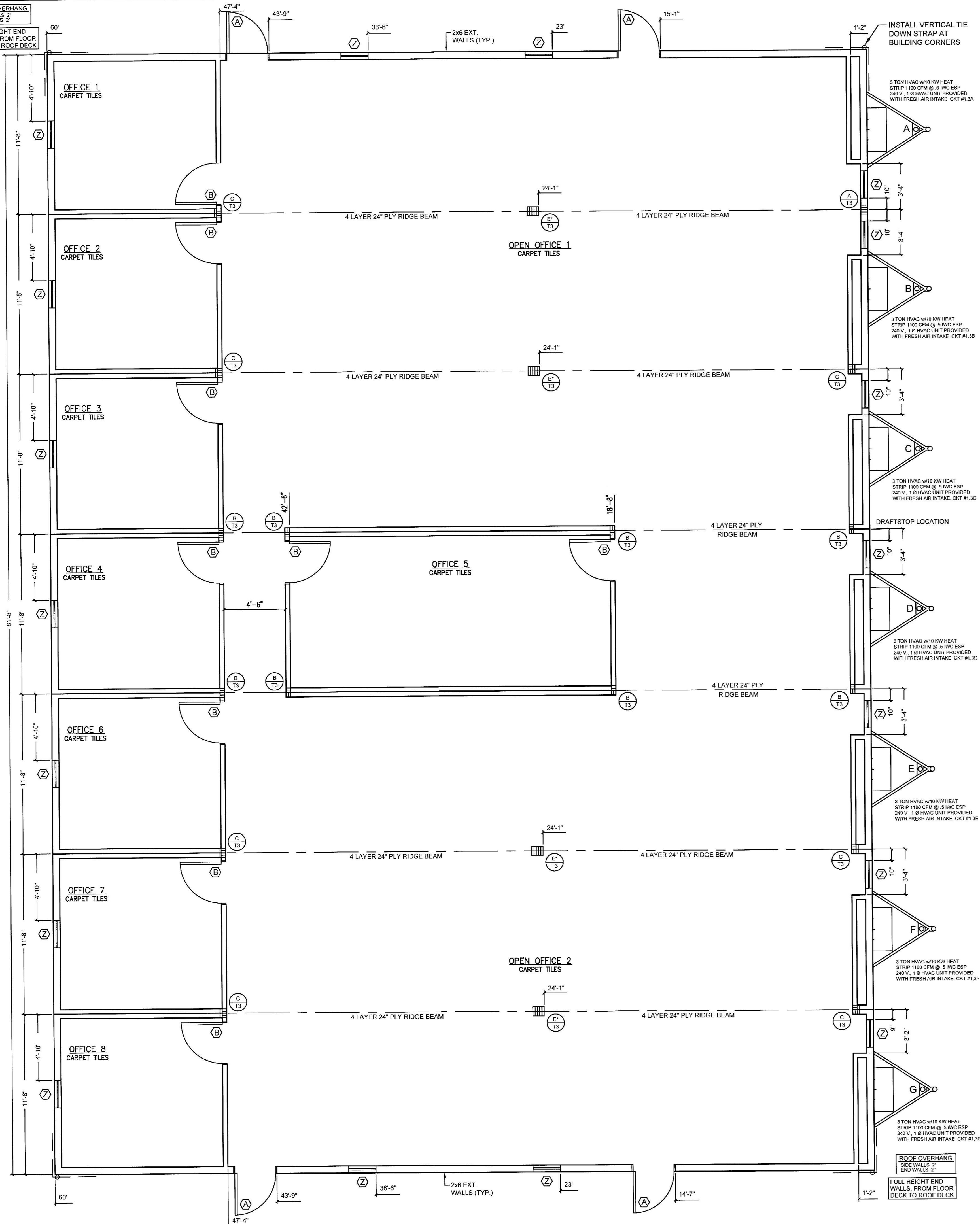


ROOF OVERHANG
SIDE WALLS 2'
END WALLS 2'

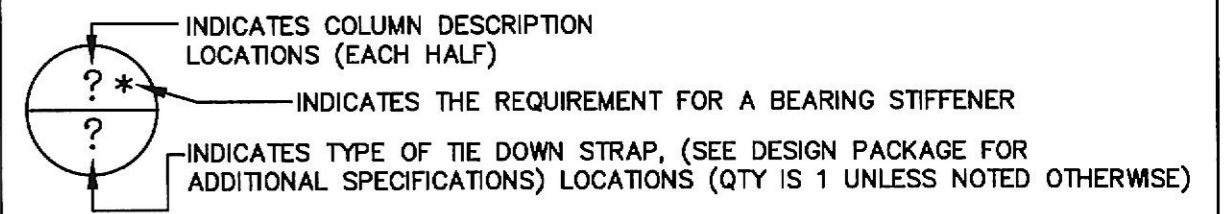
FULL HEIGHT END
WALLS, FROM FLOOR
DECK TO ROOF DECK



DRAFTSTOPPING NOTES:

- SEE FLOOR PLAN FOR REQUIRED DRAFTSTOPPING LOCATIONS
- DRAFTSTOPPING SHALL EXTEND CONTINUOUSLY FOR THE FULL LENGTH OF MATELINES AND TRUSSES WHERE INDICATED
- DRAFTSTOPPING SHALL EXTEND CONTINUOUSLY FULL HEIGHT FROM ROOF SHEATHING TO FINISH CEILING MATERIAL.
- DRAFTSTOPPING MATERIAL SHALL BE MINIMUM 1/2 INCH GYPSUM BOARD, 3/8 INCH PLYWOOD OR 1/2 INCH OSB.
- ALL DRAFTSTOPPING EDGES SHALL BE TIGHTLY FIT, INCLUDING THE ANNULAR SPACE AROUND MECHANICAL AND ELECTRICAL PENETRATIONS, SO AS TO PREVENT THE PASSAGE OF AIR.

COLUMN STUDS AND STRAPPING



COLUMN DESCRIPTIONS:

A - 2-2"x6" SYP #2 EACH HALF
 B - 2-2"x4" SYP #2 EACH HALF B1 - 2-2"x4" SYP #2
 C - 3-2"x4" SYP #2 EACH HALF C1 - 3-2"x4" SYP #2
 D - 4-2"x4" SYP #2 EACH HALF D1 - 4-2"x4" SYP #2
 E - 5-2"x4" SYP #2 EACH HALF

TIE DOWN STRAPPING

T1 = 20 GA X 15" GALV STEEL STRAP WITH (6) 0.148"Ø X 1.5" NAILS EACH END.
 T2 = 26 GA X 15" GALV STEEL STRAPS MAY BE SUBSTITUTED OR 1- 20 GA X 1.5" STRAP.
 T2 = 26 GA X 15" GALV. STEEL STRAP WITH (7) 14 GA OR 15 GA X 1/8" X 1" PENETRATION STAPLES EACH END.
 T3 = 0.035" (20 GA) X 1.25" HIT-DIPPED GALV. STEEL STRAP (660 DR BETTER) COMPLYING WITH ASTM D3953-91, Fy=108 KSI, 4725 LB. MINIMUM ULTIMATE CAPACITY, FASTENED TO RIDGE BEAM WITH (17) 0.148"Ø X 1.5" NAILS (Fyb= 90 KSI MIN.) AND EXTENDED CONTINUOUSLY BELOW FLOOR.

| DOOR SCHEDULE | | WINDOW SCHEDULE | |
|---------------|---|-----------------|---|
| (A) | 3680 - STEEL DOOR w/10"x10" SAFETY GLASS VIEW BLOCK - STEEL JAMB - CLOSURE - LEVER HARDWARE | (Z) | 2454 - VERTICAL SLIDER DP 50 INSULATED LOW-E TINTED GLASS VINYL FRAME - VINYL MINI BLINDS |
| (B) | 3680 - HOLLOW CORE - 6 PANEL DOOR WOOD JAMB - PASSAGE LEVER HARDWARE | | |

RADCO APPROVED
 Jan 08, 2021
 RESOURCES, APPLICATIONS, DESIGN & CONTROLS, INC.
 EASTERN NATIONAL REGION
 5801 BENJAMIN CENTER DRIVE, SUITE 102
 TAMPA, FL 33634
 (813) 243-0370 - O | (813) 243-1314 - F
 www.radcoinc.com

RADCO
 YOUR VISION • OUR MISSION™

THIRD PARTY DESIGN APPROVAL & INSPECTION AGENCY

NORTH CAROLINA
 PROFESSIONAL ENGINEER
 SEAL
 044898
 JAMES ALLEN CHAPMAN

STATE OF MARYLAND
 JAMES ALLEN CHAPMAN
 No. 50207
 PROFESSIONAL ENGINEER
 1-8-21

COMMONWEALTH OF VIRGINIA
 JAMES ALLEN CHAPMAN
 Lic. No. 0402057598
 1-8-21
 PROFESSIONAL ENGINEER

PROFESSIONAL CERTIFICATION. I HEREBY CERTIFY THAT THESE DOCUMENTS WERE PREPARED OR APPROVED BY ME, AND THAT I AM A DULY LICENSED PROFESSIONAL ENGINEER UNDER THE LAWS OF THE STATE OF MARYLAND, LICENSE NO. 50207, EXPIRATION DATE: 11-30-2022.

TITAN MODULAR SYSTEMS, INC.
 162 INDUSTRIAL DRIVE • ALMA, GA 31510
 912-632-3344 (PH) • 912-632-3345 (FX)

DATE: 12-28-20 ENGINEERS: JAMES ALLEN CHAPMAN, P.E. AMERICUS, GA 31719

SCALE: AS NOTED

CODES: MD, NC, VA

TMS-5885 A-G - 84'x60' - BUSINESS

FLOOR PLAN PAGE: 3 / 8

FLOOR PLAN
 3/16" = 1'-0"