

ELECTRICAL SIZING 120/240V SGL PHASE INSTALL 100 AMP PANEL				
ID	QTY	UNITS	KW	SUB-TOTAL
HVAC 3 TON	1	EACH	10.6	10.60
WATER HEATER	0	EACH	4.5	0.00
LIGHTS	700	SQ FT	0.0035	3.06
RECEPTACLES	11	EACH	0.18	1.98
EXHAUST FANS	0	EACH	0.4	0.00
DEDICATED CIRCUITS	0	EACH	1.9	0.00
TOTAL =				15.64
				AMPS

ELECTRICAL PANEL SCHEDULE A				
CIRCUIT ID	DESCRIPTION	BREAKER	WIRE	
1.3 A	HVAC 3 TON	60A (2P) HACR	6-6-10 MC	
2 A	LIGHTS	20A	12	
4 - 6 A	RECEPTACLES	20A	12	

ELECTRICAL SIZING 120/240V SGL PHASE INSTALL 100 AMP PANEL				
ID	QTY	UNITS	KW	SUB-TOTAL
HVAC 3 TON	1	EACH	10.6	10.60
WATER HEATER	0	EACH	4.5	0.00
LIGHTS	700	SQ FT	0.0035	3.06
RECEPTACLES	10	EACH	0.18	1.80
EXHAUST FANS	0	EACH	0.4	0.00
DEDICATED CIRCUITS	0	EACH	1.9	0.00
TOTAL =				15.46
				AMPS

ELECTRICAL PANEL SCHEDULE B				
CIRCUIT ID	DESCRIPTION	BREAKER	WIRE	
1.3 B	HVAC 3 TON	60A (2P) HACR	6-6-10 MC	
2 B	LIGHTS	20A	12	
4 - 6 B	RECEPTACLES	20A	12	

ELECTRICAL SIZING 120/240V SGL PHASE INSTALL 100 AMP PANEL				
ID	QTY	UNITS	KW	SUB-TOTAL
HVAC 3 TON	1	EACH	10.6	10.60
WATER HEATER	0	EACH	4.5	0.00
LIGHTS	700	SQ FT	0.0035	3.1
RECEPTACLES	10	EACH	0.18	1.80
EXHAUST FANS	0	EACH	0.4	0.0
DEDICATED CIRCUITS	0	EACH	1.9	0.0
TOTAL =				15.5
				AMPS

ELECTRICAL PANEL SCHEDULE C				
CIRCUIT ID	DESCRIPTION	BREAKER	WIRE	
1.3 C	HVAC 3 TON	60A (2P) HACR	6-6-10 MC	
2 C	LIGHTS	20A	12	
4 - 6 C	RECEPTACLES	20A	12	

ELECTRICAL SIZING 120/240V SGL PHASE INSTALL 100 AMP PANEL				
ID	QTY	UNITS	KW	SUB-TOTAL
HVAC 3 TON	1	EACH	10.6	10.60
WATER HEATER	0	EACH	4.5	0.00
LIGHTS	700	SQ FT	0.0035	3.06
RECEPTACLES	15	EACH	0.18	2.70
EXHAUST FANS	0	EACH	0.4	0.00
DEDICATED CIRCUITS	0	EACH	1.9	0.00
TOTAL =				16.36
				AMPS

ELECTRICAL PANEL SCHEDULE D				
CIRCUIT ID	DESCRIPTION	BREAKER	WIRE	
1.3 D	HVAC 3 TON	60A (2P) HACR	6-6-10 MC	
2 D	LIGHTS	20A	12	
4 - 6 D	RECEPTACLES	20A	12	

ELECTRICAL SIZING 120/240V SGL PHASE INSTALL 100 AMP PANEL				
ID	QTY	UNITS	KW	SUB-TOTAL
HVAC 3 TON	1	EACH	10.6	10.60
WATER HEATER	0	EACH	4.5	0.00
LIGHTS	700	SQ FT	0.0035	3.06
RECEPTACLES	10	EACH	0.18	1.80
EXHAUST FANS	0	EACH	0.4	0.00
DEDICATED CIRCUITS	0	EACH	1.9	0.00
TOTAL =				15.46
				AMPS

ELECTRICAL PANEL SCHEDULE E				
CIRCUIT ID	DESCRIPTION	BREAKER	WIRE	
1.3 E	HVAC 3 TON	60A (2P) HACR	6-6-10 MC	
2 E	LIGHTS	20A	12	
4, 6 E	RECEPTACLES	20A	12	

ELECTRICAL SIZING 120/240V SGL PHASE INSTALL 100 AMP PANEL				
ID	QTY	UNITS	KW	SUB-TOTAL
HVAC 3 TON	1	EACH	10.6	10.60
WATER HEATER	0	EACH	4.5	0.00
LIGHTS	700	SQ FT	0.0035	3.06
RECEPTACLES	10	EACH	0.18	1.80
EXHAUST FANS	0	EACH	0.4	0.00
DEDICATED CIRCUITS	0	EACH	1.9	0.00
TOTAL =				15.46
				AMPS

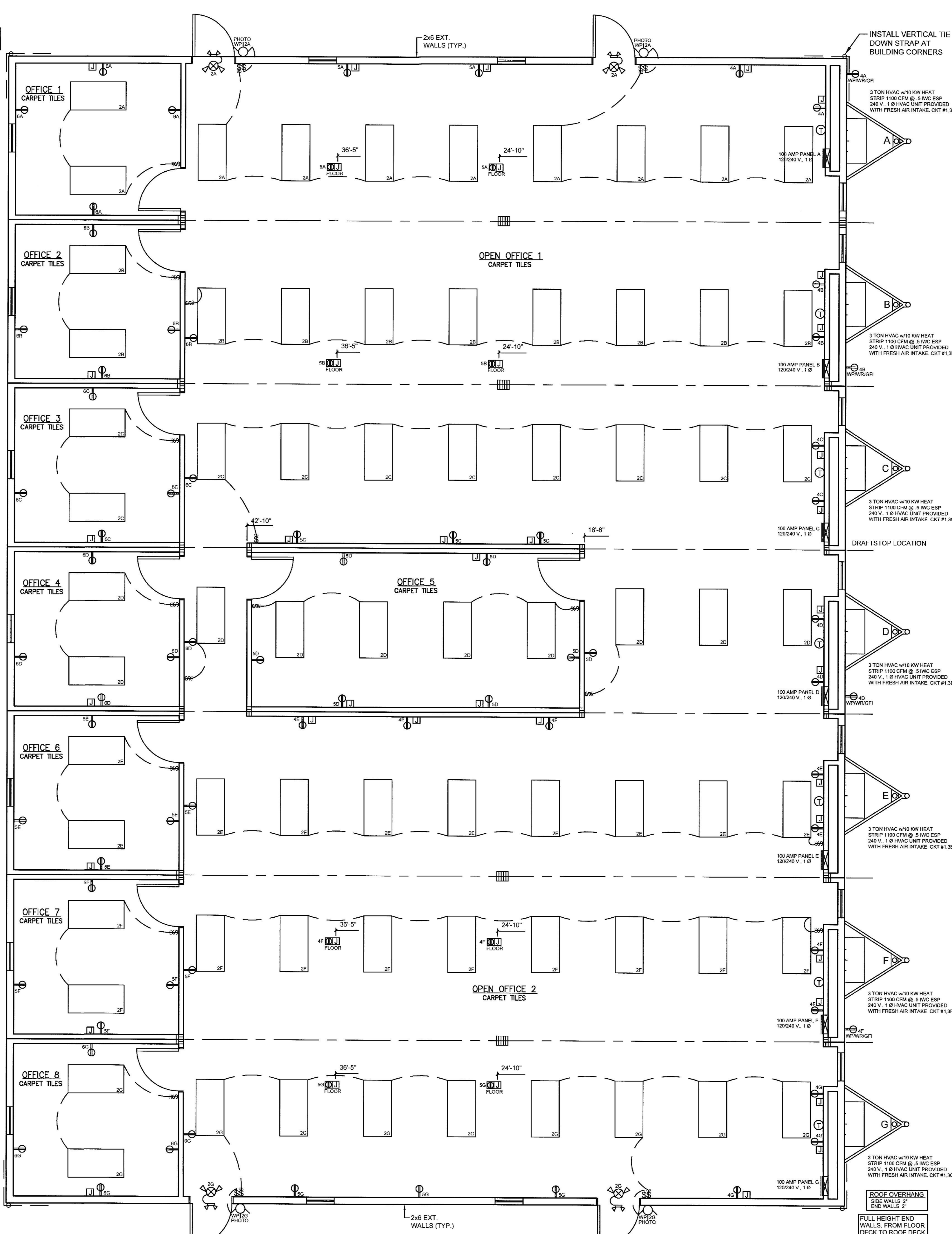
ELECTRICAL PANEL SCHEDULE F				
CIRCUIT ID	DESCRIPTION	BREAKER	WIRE	
1.3 F	HVAC 3 TON	60A (2P) HACR	6-6-10 MC	
2 F	LIGHTS	20A	12	
4, 5 F	RECEPTACLES	20A	12	

ELECTRICAL SIZING 120/240V SGL PHASE INSTALL 100 AMP PANEL				
ID	QTY	UNITS	KW	SUB-TOTAL
HVAC 3 TON	1	EACH	10.6	10.60
WATER HEATER	0	EACH	4.5	0.00
LIGHTS	700	SQ FT	0.0035	3.06
RECEPTACLES	13	EACH	0.18	2.34
EXHAUST FANS	0	EACH	0.4	0.00
DEDICATED CIRCUITS	0	EACH	1.9	0.00
TOTAL =				16.00
				AMPS

ELECTRICAL PANEL SCHEDULE G				
CIRCUIT ID	DESCRIPTION	BREAKER	WIRE	
1.3 G	HVAC 3 TON	60A (2P) HACR	6-6-10 MC	
2 G	LIGHTS	20A	12	
5 - 6 G	RECEPTACLES	20A	12	

MC CABLE IN CEILING,  
NM CABLE REMAINDER

ROOF OVERHANG  
SIDE WALLS 2"  
END WALLS 2"  
FULL HEIGHT END  
WALLS, FROM FLOOR  
DECK TO ROOF DECK



### SYMBOL LEGEND

- WALL MOUNT LIGHT SWITCH
- SGL POLE / OCCUPANCY SENSOR SWITCH
- J-BOX IN WALL OR FLOOR (NON POWERED)
- 120 V DUPLEX RECEPTACLE IN FLOOR
- 120 V DUPLEX RECEPTACLE
- 120 V DUPLEX RECEPTACLE @ COUNTER TOP HEIGHT
- RECESSED FLUORESCENT LIGHT FIXTURE W/ 2-25W BULBS
- 24"x24" RETURN AIR CEILING REGISTER
- 24"x24" SUPPLY AIR CEILING REGISTER
- FLUSH MOUNT 120 / 240 V 1 Ø ELECTRICAL PANEL
- WALL MT 7-DAY PROGRAMMABLE THERMOSTAT
- EXTERIOR REMOTE HEAD EMERGENCY LIGHT
- CEILING MT COMBO LIGHTED EXIT SIGN / EMERGENCY LIGHT 90 MINUTE CAPACITY
- 60 W EXTERIOR PORCH LIGHT W/ PHOTO CELL, WEATHER PROOF

**RADCO APPROVED**  
Jan 08, 2021  
RESOURCES, APPLICATIONS, DESIGN & CONTROLS, INC.  
EASTERN NATIONAL REGION  
5801 BENJAMIN CENTER DRIVE, SUITE 102  
TAMPA, FL 33634  
(813) 243-0370 - O | (813) 243-1314 - F  
www.radcoinc.com

**RADCO**  
YOUR VISION • OUR MISSION

THIRD PARTY DESIGN APPROVAL & INSPECTION AGENCY

COMMONWEALTH OF VIRGINIA  
James Allen Chapman  
Lic. No. 0402057598  
1-8-21  
PROFESSIONAL ENGINEER

NORTH CAROLINA PROFESSIONAL ENGINEER  
SEALED  
044898  
JAMES ALLEN CHAPMAN  
1-8-21

STATE OF MARYLAND  
James Allen Chapman  
No. 50207  
PROFESSIONAL ENGINEER  
1-8-21

PROFESSIONAL CERTIFICATION. I HEREBY CERTIFY THAT THESE DOCUMENTS WERE PREPARED OR APPROVED BY ME, AND THAT I AM A DULY LICENSED PROFESSIONAL ENGINEER UNDER THE LAWS OF THE STATE OF MARYLAND, LICENSE NO. 50207, EXPIRATION DATE: 11-30-2022.

## ELECTRICAL PLAN

3/16" = 1'-0"

TITAN MODULAR SYSTEMS, INC.	
162 INDUSTRIAL DRIVE * ALMA, GA 31510 912-632-3344 (PH) * 912-632-3345 (FX)	
DATE: 12-28-20	ENGINEERS: JAMES ALLEN CHAPMAN, P.E.
SCALE: AS NOTED	AMERICUS, GA 31719
CODES: MD, NC, VA	
TMS-5885 A-G - 84'x60' - BUSINESS	
ELECTRICAL	PAGE: 4 / 8