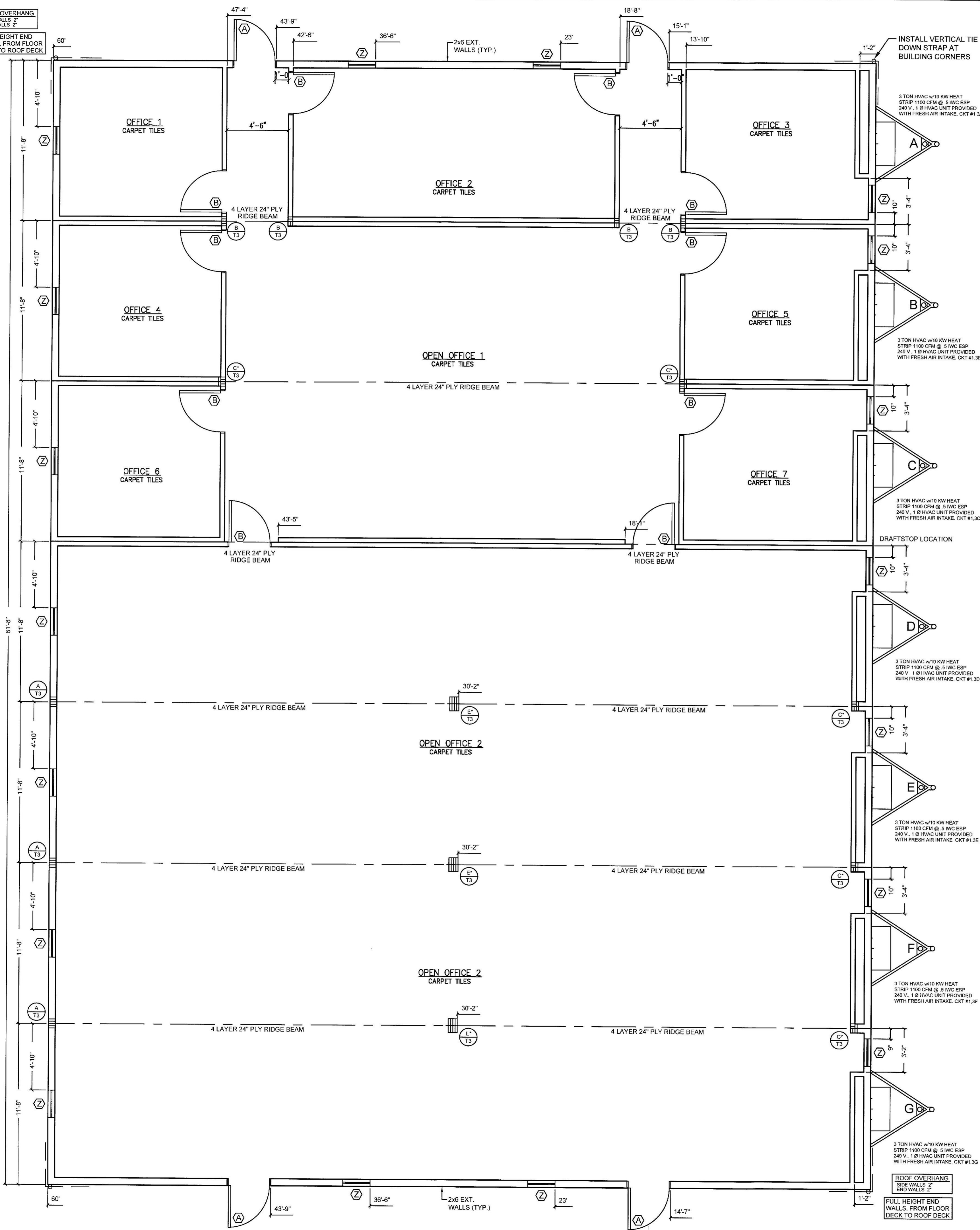


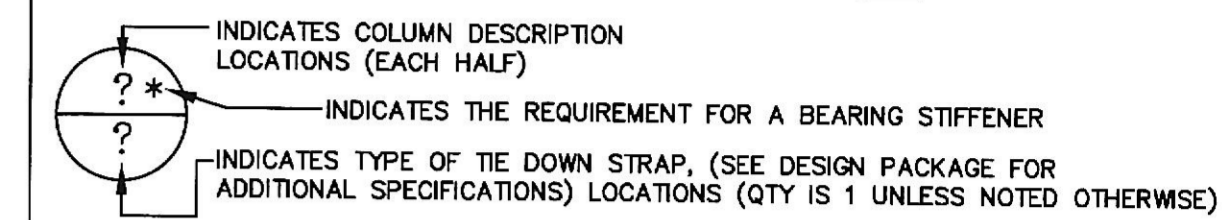
ROOF OVERHANG
SIDE WALLS 2"
END WALLS 2"
FULL HEIGHT END
WALLS, FROM FLOOR
DECK TO ROOF DECK



DRAFTSTOPPING NOTES:

- SEE FLOOR PLAN FOR REQUIRED DRAFTSTOPPING LOCATIONS
- DRAFTSTOPPING SHALL EXTEND CONTINUOUSLY FOR THE FULL LENGTH OF MATELINES AND TRUSSES WHERE INDICATED
- DRAFTSTOPPING SHALL EXTEND CONTINUOUSLY FULL HEIGHT FROM ROOF SHEATHING TO FINISH CEILING MATERIAL.
- DRAFTSTOPPING MATERIAL SHALL BE MINIMUM 1/2 INCH GYPSUM BOARD, 3/8 INCH PLYWOOD OR 7/16 INCH OSB.
- ALL DRAFTSTOPPING EDGES SHALL BE TIGHTLY FIT, INCLUDING THE ANNULAR SPACE AROUND MECHANICAL AND ELECTRICAL PENETRATIONS, SO AS TO PREVENT THE PASSAGE OF AIR.

COLUMN STUDS AND STRAPPING



COLUMN DESCRIPTIONS
 A - 2-2"x6" SYP #2 EACH HALF
 B - 2-2"x4" SYP #2 EACH HALF B1 - 2-2"x4" SYP #2
 C - 3-2"x4" SYP #2 EACH HALF C1 - 3-2"x4" SYP #2
 D - 4-2"x4" SYP #2 EACH HALF D1 - 4-2"x4" SYP #2
 E - 4-2"x6" SYP #2 EACH HALF

TIE DOWN STRAPPING
 T1 = 20 GA x 1.5" GALV. STEEL STRAP WITH (6) 0.148" x 1.5" NAILS EACH END.
 2- 26 GA x 1.5" GALV. STEEL STRAPS MAY BE SUBSTITUTED OR 1- 20 GA x 1.5" STRAP.
 T2 = 26 GA x 1.5" GALV. STEEL STRAP WITH (7) 14 GA DR 15 GA x 7/8" x 1" PENETRATION STAPLES EACH END.
 T3 = 0.035" (20 GA) x 1.25" HOT-DIPPED GALV. STEEL STRAP (60 OR BETTER) COMPLYING WITH ASTM D3953-91, Fy=108 KSI, 4725 LB. MINIMUM ULTIMATE CAPACITY, FASTENED TO RIDGE BEAM WITH (17) 0.148" x 1.5" NAILS (Fyb= 90 KSI MIN) AND EXTENDED CONTINUOUSLY BELOW FLOOR.

DOOR SCHEDULE	WINDOW SCHEDULE
(A) 3680 - STEEL DOOR w/10"x10" SAFETY GLASS VIEW BLOCK - STEEL JAMB - CLOSURE - LEVER HARDWARE	(Z) 2454 - VERTICAL SLIDER DP 50 INSULATED LOW-E TINTED GLASS VINYL FRAME - VINYL MINI BLINDS
(B) 3680 - HOLLOW CORE - 6 PANEL DOOR WOOD JAMB - PASSAGE LEVER HARDWARE	

RADCO APPROVED
 Jan 08, 2021
 RESOURCES, APPLICATIONS, DESIGN & CONTROLS, INC.
 EASTERN NATIONAL REGION
 5801 BENJAMIN CENTER DRIVE, SUITE 102
 TAMPA, FL 33634
 (813) 243 0370 - 01 (813) 243-1314 - F
 www.radcoinc.com

THIRD PARTY DESIGN APPROVAL & INSPECTION AGENCY

PROFESSIONAL CERTIFICATION. I HEREBY CERTIFY THAT THESE DOCUMENTS WERE PREPARED OR APPROVED BY ME, AND THAT I AM A DULY LICENSED PROFESSIONAL ENGINEER UNDER THE LAWS OF THE STATE OF MARYLAND, LICENSE NO. 50207, EXPIRATION DATE: 11-30-2022.

FLOOR PLAN

3/16" = 1'-0"

TITAN MODULAR SYSTEMS, INC.
 162 INDUSTRIAL DRIVE * ALMA, GA 31510
 912-632-3344 (PH) * 912-632-3345 (FX)

DATE: 12-31-20	ENGINEERS: JAMES ALLEN CHAPMAN, P.E. AMERICUS, GA 31719
SCALE: AS NOTED	
CODES: MD, NC, VA	
TMS-5886 A-G - 84'x60' - BUSINESS	
FLOOR PLAN	PAGE: 3 / 8