

| ELECTRICAL SIZING 120/240V SGL PHASE INSTALL 100 AMP PANEL | | | | |
|--|-----|---------|--------|-----------|
| ID | QTY | UNITS | KW | SUB-TOTAL |
| HVAC 3 TON | 1 | EACH | 10.6 | 10.60 |
| WATER HEATER | 0 | EACH | 4.5 | 0.00 |
| LIGHTS | 700 | SQ FT | 0.0035 | 3.06 |
| RECEPTACLES | 15 | EACH | 0.18 | 2.70 |
| EXHAUST FANS | 0 | EACH | 0.4 | 0.00 |
| DEDICATED CIRCUITS | 0 | EACH | 1.9 | 0.00 |
| | | TOTAL = | | 16.36 |
| | | TOTAL = | | 68.2 |

| ELECTRICAL PANEL SCHEDULE A | | | |
|-----------------------------|-------------|---------------|-----------|
| CIRCUIT ID | DESCRIPTION | BREAKER | WIRE |
| 1.3 A | HVAC 3 TON | 60A (2P) HACR | 6-6-10 MC |
| 2 A | LIGHTS | 20A | 12 |
| 4 - 6 A | RECEPTACLES | 20A | 12 |

| ELECTRICAL SIZING 120/240V SGL PHASE INSTALL 100 AMP PANEL | | | | |
|--|-----|---------|--------|-----------|
| ID | QTY | UNITS | KW | SUB-TOTAL |
| HVAC 3 TON | 1 | EACH | 10.6 | 10.60 |
| WATER HEATER | 0 | EACH | 4.5 | 0.00 |
| LIGHTS | 700 | SQ FT | 0.0035 | 3.06 |
| RECEPTACLES | 15 | EACH | 0.18 | 2.70 |
| EXHAUST FANS | 0 | EACH | 0.4 | 0.00 |
| DEDICATED CIRCUITS | 0 | EACH | 1.9 | 0.00 |
| | | TOTAL = | | 16.36 |
| | | TOTAL = | | 68.2 |

| ELECTRICAL PANEL SCHEDULE B | | | |
|-----------------------------|-------------|---------------|-----------|
| CIRCUIT ID | DESCRIPTION | BREAKER | WIRE |
| 1.3 B | HVAC 3 TON | 60A (2P) HACR | 6-6-10 MC |
| 2 B | LIGHTS | 20A | 12 |
| 4 - 6 B | RECEPTACLES | 20A | 12 |

| ELECTRICAL SIZING 120/240V SGL PHASE INSTALL 100 AMP PANEL | | | | |
|--|-----|---------|--------|-----------|
| ID | QTY | UNITS | KW | SUB-TOTAL |
| HVAC 3 TON | 1 | EACH | 10.6 | 10.60 |
| WATER HEATER | 0 | EACH | 4.5 | 0.00 |
| LIGHTS | 700 | SQ FT | 0.0035 | 3.1 |
| RECEPTACLES | 13 | EACH | 0.18 | 2.3 |
| EXHAUST FANS | 0 | EACH | 0.4 | 0.0 |
| DEDICATED CIRCUITS | 0 | EACH | 1.9 | 0.0 |
| | | TOTAL = | | 16.0 |
| | | TOTAL = | | 66.7 |

| ELECTRICAL PANEL SCHEDULE C | | | |
|-----------------------------|-------------|---------------|-----------|
| CIRCUIT ID | DESCRIPTION | BREAKER | WIRE |
| 1.3 C | HVAC 3 TON | 60A (2P) HACR | 6-6-10 MC |
| 2 C | LIGHTS | 20A | 12 |
| 4, 5 C | RECEPTACLES | 20A | 12 |

| ELECTRICAL SIZING 120/240V SGL PHASE INSTALL 100 AMP PANEL | | | | |
|--|-----|---------|--------|-----------|
| ID | QTY | UNITS | KW | SUB-TOTAL |
| HVAC 3 TON | 1 | EACH | 10.6 | 10.60 |
| WATER HEATER | 0 | EACH | 4.5 | 0.00 |
| LIGHTS | 700 | SQ FT | 0.0035 | 3.06 |
| RECEPTACLES | 10 | EACH | 0.18 | 1.80 |
| EXHAUST FANS | 0 | EACH | 0.4 | 0.00 |
| DEDICATED CIRCUITS | 0 | EACH | 1.9 | 0.00 |
| | | TOTAL = | | 15.46 |
| | | TOTAL = | | 64.4 |

| ELECTRICAL PANEL SCHEDULE D | | | |
|-----------------------------|-------------|---------------|-----------|
| CIRCUIT ID | DESCRIPTION | BREAKER | WIRE |
| 1.3 D | HVAC 3 TON | 60A (2P) HACR | 6-6-10 MC |
| 2 D | LIGHTS | 20A | 12 |
| 4, 5 D | RECEPTACLES | 20A | 12 |

| ELECTRICAL SIZING 120/240V SGL PHASE INSTALL 100 AMP PANEL | | | | |
|--|-----|---------|--------|-----------|
| ID | QTY | UNITS | KW | SUB-TOTAL |
| HVAC 3 TON | 1 | EACH | 10.6 | 10.60 |
| WATER HEATER | 0 | EACH | 4.5 | 0.00 |
| LIGHTS | 700 | SQ FT | 0.0035 | 3.06 |
| RECEPTACLES | 5 | EACH | 0.18 | 0.90 |
| EXHAUST FANS | 0 | EACH | 0.4 | 0.00 |
| DEDICATED CIRCUITS | 0 | EACH | 1.9 | 0.00 |
| | | TOTAL = | | 14.56 |
| | | TOTAL = | | 60.7 |

| ELECTRICAL PANEL SCHEDULE E | | | |
|-----------------------------|-------------|---------------|-----------|
| CIRCUIT ID | DESCRIPTION | BREAKER | WIRE |
| 1.3 E | HVAC 3 TON | 60A (2P) HACR | 6-6-10 MC |
| 2 E | LIGHTS | 20A | 12 |
| 4, 5 E | RECEPTACLES | 20A | 12 |

| ELECTRICAL SIZING 120/240V SGL PHASE INSTALL 100 AMP PANEL | | | | |
|--|-----|---------|--------|-----------|
| ID | QTY | UNITS | KW | SUB-TOTAL |
| HVAC 3 TON | 1 | EACH | 10.6 | 10.60 |
| WATER HEATER | 0 | EACH | 4.5 | 0.00 |
| LIGHTS | 700 | SQ FT | 0.0035 | 3.06 |
| RECEPTACLES | 6 | EACH | 0.18 | 1.08 |
| EXHAUST FANS | 0 | EACH | 0.4 | 0.00 |
| DEDICATED CIRCUITS | 0 | EACH | 1.9 | 0.00 |
| | | TOTAL = | | 14.74 |
| | | TOTAL = | | 61.4 |

| ELECTRICAL PANEL SCHEDULE F | | | |
|-----------------------------|-------------|---------------|-----------|
| CIRCUIT ID | DESCRIPTION | BREAKER | WIRE |
| 1.3 F | HVAC 3 TON | 60A (2P) HACR | 6-6-10 MC |
| 2 F | LIGHTS | 20A | 12 |
| 4, 5 F | RECEPTACLES | 20A | 12 |

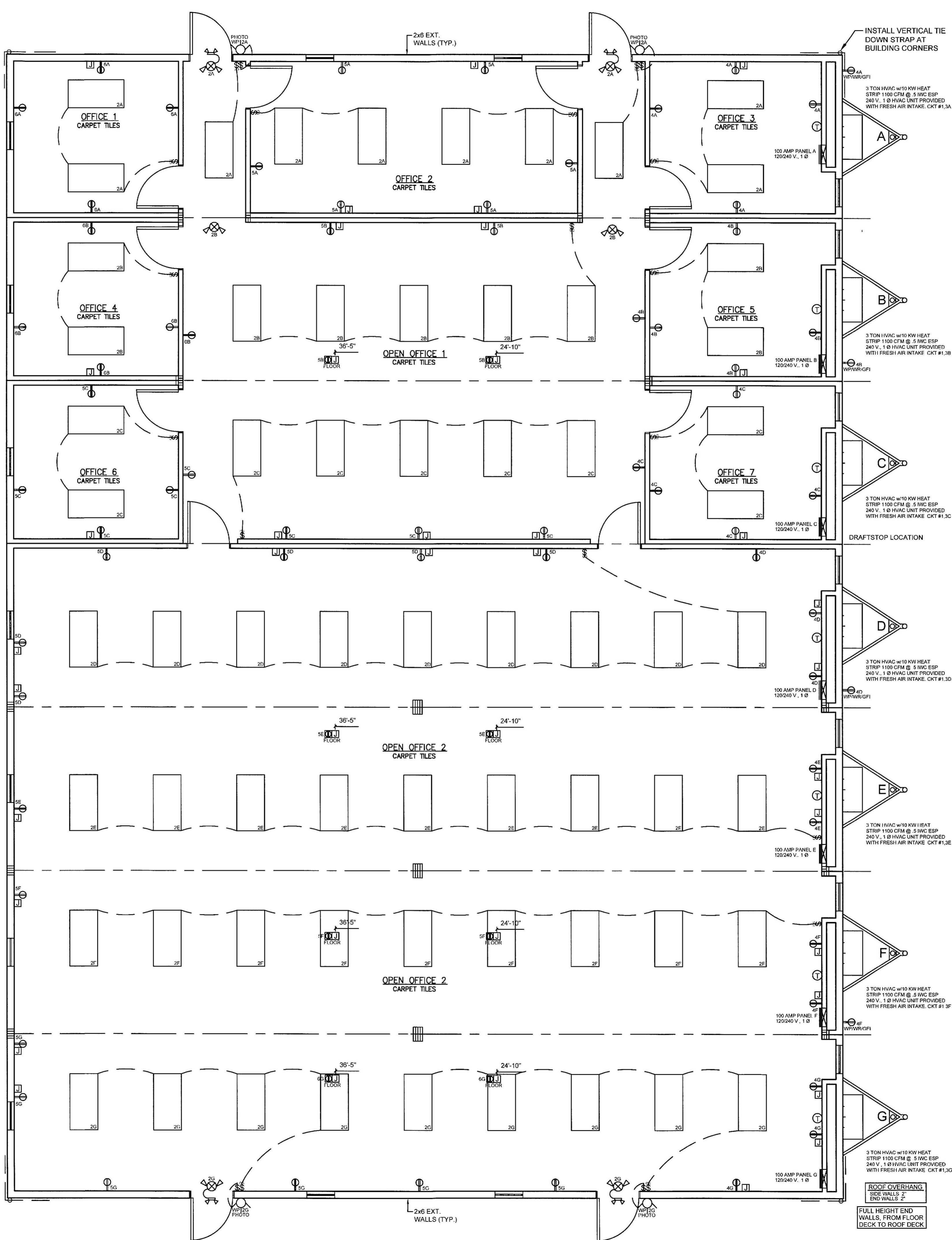
| ELECTRICAL SIZING 120/240V SGL PHASE INSTALL 100 AMP PANEL | | | | |
|--|-----|---------|--------|-----------|
| ID | QTY | UNITS | KW | SUB-TOTAL |
| HVAC 3 TON | 1 | EACH | 10.6 | 10.60 |
| WATER HEATER | 0 | EACH | 4.5 | 0.00 |
| LIGHTS | 700 | SQ FT | 0.0035 | 3.06 |
| RECEPTACLES | 11 | EACH | 0.18 | 1.98 |
| EXHAUST FANS | 0 | EACH | 0.4 | 0.00 |
| DEDICATED CIRCUITS | 0 | EACH | 1.9 | 0.00 |
| | | TOTAL = | | 15.64 |
| | | TOTAL = | | 65.2 |

| ELECTRICAL PANEL SCHEDULE G | | | |
|-----------------------------|-------------|---------------|-----------|
| CIRCUIT ID | DESCRIPTION | BREAKER | WIRE |
| 1.3 G | HVAC 3 TON | 60A (2P) HACR | 6-6-10 MC |
| 2 G | LIGHTS | 20A | 12 |
| 4 - 6 G | RECEPTACLES | 20A | 12 |

MC CABLE IN CEILING,
NM CABLE REMAINDER

ROOF OVERHANG
SIDE WALLS 2'
END WALLS 2'

FULL HEIGHT END
WALLS FROM FLOOR
DECK TO ROOF DECK



SYMBOL LEGEND

- ⌚ / ⌚ WALL MOUNT LIGHT SWITCH
- ⌚ / ⌚ SGL POLE / OCCUPANCY SENSOR SWITCH
- ⌚ J-BOX IN WALL OR FLOOR (NON POWERED)
- ⌚ 120 V DUPLEX RECEPTACLE IN FLOOR
- ⌚ 120 V DUPLEX RECEPTACLE
- ⌚ RECESSED FLUORESCENT LIGHT FIXTURE W/ 2-25W BULBS
- ⌚ 24"x24" RETURN AIR CEILING REGISTER
- ⌚ 24"x24" SUPPLY AIR CEILING REGISTER
- ⌚ FLUSH MOUNT 120 / 240 V 1 ⌀ ELECTRICAL PANEL
- ⌚ WALL MT 7-DAY PROGRAMMABLE THERMOSTAT
- ⌚ EXTERIOR REMOTE HEAD EMERGENCY LIGHT
- ⌚ CEILING MT COMBO LIGHTED EXIT SIGN / EMERGENCY LIGHT 90 MINUTE CAPACITY
- ⌚ 60 W EXTERIOR PORCH LIGHT W/ PHOTO CELL, WEATHER PROOF

RADCO APPROVED
Jan 08, 2021
RESOURCES, APPLICATIONS, DESIGN & CONTROLS, INC.
EASTERN NATIONAL REGION
5801 BENJAMIN CENTER DRIVE, SUITE 102
TAMPA, FL 33634
(813) 243-0370 • (813) 243-3311 • F
www.radcoinc.com

RADCO
FOOD SERVICE • DATA CENTER

THIRD PARTY DESIGN APPROVAL & INSPECTION AGENCY

COMMONWEALTH OF VIRGINIA
James Allen Chapman
Lic. No. 0402057598
1-8-21
PROFESSIONAL ENGINEER

NORTH CAROLINA PROFESSIONAL ENGINEER
SEAL 044898
JAMES ALLEN CHAPMAN
ENGINEER

STATE OF MARYLAND
James Allen Chapman
Lic. No. 50207
PROFESSIONAL ENGINEER
1-8-21

PROFESSIONAL CERTIFICATION. I HEREBY CERTIFY THAT THESE DOCUMENTS WERE PREPARED OR APPROVED BY ME, AND THAT I AM A DULY LICENSED PROFESSIONAL ENGINEER UNDER THE LAWS OF THE STATE OF MARYLAND, LICENSE NO. 50207, EXPIRATION DATE: 11-30-2022.

ELECTRICAL PLAN

3/16" = 1'-0"

TITAN MODULAR SYSTEMS, INC.
162 INDUSTRIAL DRIVE • ALMA, GA 31510
912-632-3344 (PH) • 912-632-3345 (FX)

| | |
|-----------------------------------|--------------------------------------|
| DATE: 12-31-20 | ENGINEERS: JAMES ALLEN CHAPMAN, P.E. |
| SCALE: AS NOTED | AMERICUS, GA 31719 |
| CODES: MD, NC, VA | |
| TMS-5886 A-G - 84'x60' - BUSINESS | |
| ELECTRICAL | PAGE: 4 / 8 |