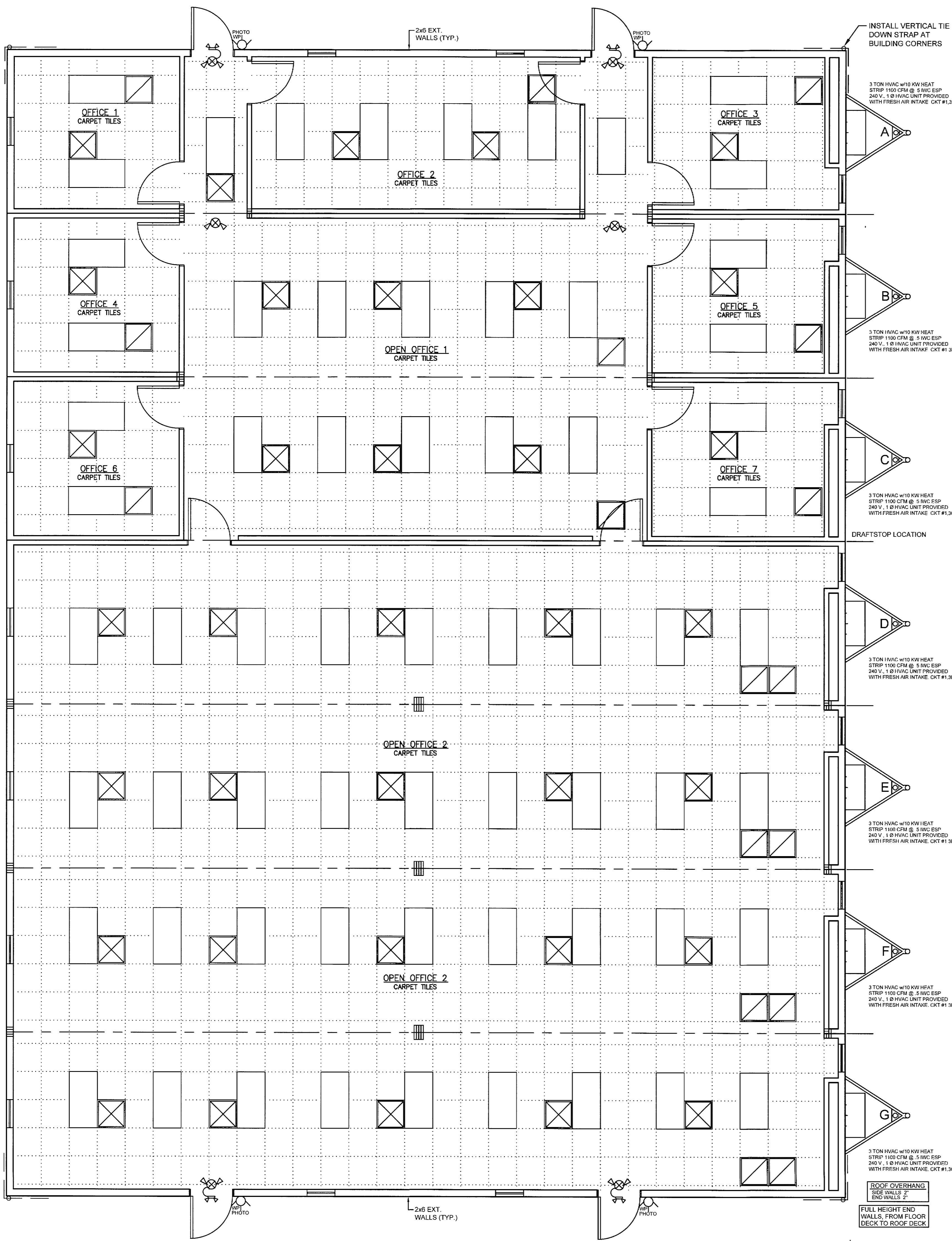


ROOF OVERHANG
SIDE WALLS 2'
END WALLS 2'

FULL HEIGHT END
WALLS, FROM FLOOR
DECK TO ROOF DECK



SYMBOL LEGEND

- \$/S WALL MOUNT LIGHT SWITCH
- J SGL POLE / OCCUPANCY SENSOR SWITCH
- J-BOX IN WALL OR FLOOR (NON POWERED)
- 120 V DUPLEX RECEPTACLE IN FLOOR
- 120 V DUPLEX RECEPTACLE
- RECESSED FLUORESCENT LIGHT FIXTURE W/ 2-25W BULBS
- 24"x24" RETURN AIR CEILING REGISTER
- 24"x24" SUPPLY AIR CEILING REGISTER
- FLUSH MOUNT 120 / 240 V 1 Ø ELECTRICAL PANEL
- WALL MT 7-DAY PROGRAMMABLE THERMOSTAT
- EXTERIOR REMOTE HEAD EMERGENCY LIGHT
- CEILING MT COMBO LIGHTED EXIT SIGN / EMERGENCY LIGHT 90 MINUTE CAPACITY
- 60 W EXTERIOR PORCH LIGHT W/ PHOTO CELL, WEATHER PROOF

RADCO APPROVED
Jan 08, 2021
RESOURCES, APPLICATIONS, DESIGN & CONTROLS, INC.
EASTERN NATIONAL REGION
5801 BENJAMIN CENTER DRIVE, SUITE 102
TAMPA, FL 33634
(813) 243-0370 - O | (813) 243-1314 - F
www.radcoinc.com

RADCO
YOUR VISION • OUR MISSION!

THIRD PARTY DESIGN APPROVAL & INSPECTION AGENCY



PROFESSIONAL CERTIFICATION. I HEREBY CERTIFY THAT THESE DOCUMENTS WERE PREPARED OR APPROVED BY ME, AND THAT I AM A DULY LICENSED PROFESSIONAL ENGINEER UNDER THE LAWS OF THE STATE OF MARYLAND, LICENSE NO. 50207, EXPIRATION DATE: 11-30-2022.

TITAN MODULAR SYSTEMS, INC.
162 INDUSTRIAL DRIVE * ALMA, GA 31510
912-632-3344 (PH) * 912-632-3345 (FX)

DATE: 12-31-20 ENGINEERS: JAMES ALLEN CHAPMAN, P.E.
SCALE: N-T-S AMERICUS, GA 31719

CODES: MD, NC, VA

TMS-5886 A-G - 84'x60' - BUSINESS

REFLECTED CEILING PAGE: 6 / 8

REFLECTED CEILING PLAN

3/16" = 1'-0"