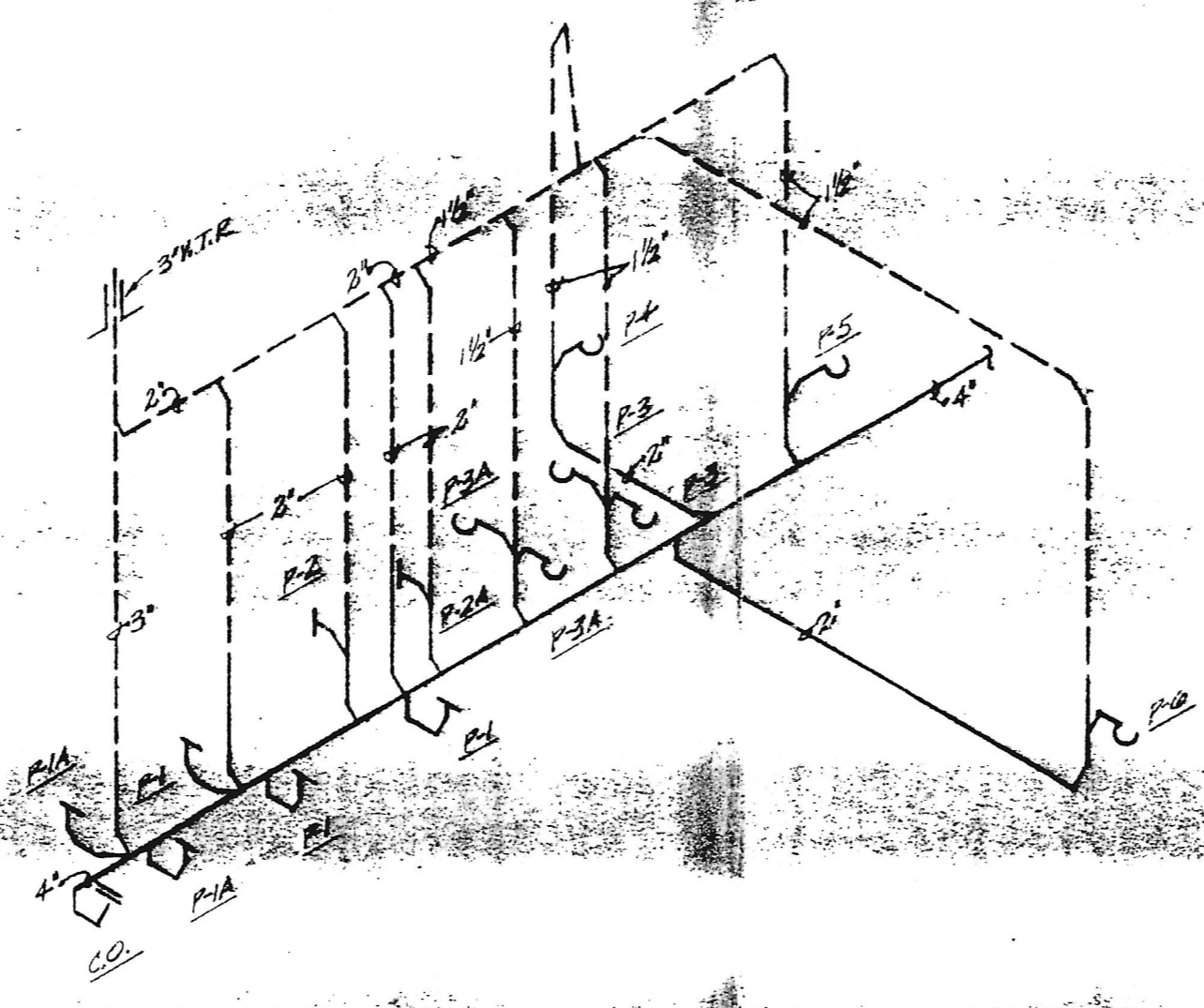


TOILET ROOMS PLUMBING DETAIL  
SCALE: 1/4" = 1'-0"



SANITARY RISER DIAGRAM  
NOT TO SCALE

PLUMBING FIXTURE SCHEDULE					
No.	FIXTURE	C. V.	H. W.	SN.	DESCRIPTION
P-1	Water Closet	3/4"	-	4"	American Standard Elongated Water Saver Cadet #2102 405, White Open Front Seat, C.P. Flexible Supply W/angle Stops.
P-1A	Water Closet (Handicapped)	3/4"	-	4"	American Standard Elongated Water Saver Cadet #2102 405, White Open Front Seat, C.P. Flexible Supply W/angle Stops.
P-2	Urinal	3/4"	-	2"	American Standard Washbrook #6501-010, Sloan Royal Flush Valve #100.
P-2A	Urinal (Handicapped)	3/4"	-	2"	American Standard Washbrook #6501-010, Sloan Royal Flush Valve #100.
P-3	Lavatory	1/2"	1/2"	1-1/2"	American Standard Ledgewood #4300-042, C.P. Faucet, C.P. Pop-up Drain, C.P. Tailpiece, C.P. 1/2" Trap, C.P. Flexible Supplies W/angle Stops.
P-3A	Lavatory (Handicapped)	1/2"	1/2"	1-1/2"	American Standard Ledgewood #4300-042, C.P. Faucet, C.P. Pop-up Drain, C.P. Tailpiece, C.P. 1/2" Trap, C.P. Flexible Supplies W/angle Stops.
P-4	Laundry Sink	1/2"	1/2"	2"	Flat Fiberglass Faucet, Drain Tailpiece, P Trap Flexible Supplies W/angle Stops.
P-5	Water Cooler	1/2"	-	1-1/2"	Halsey Taylor #58-4-1-1
P-6	Kitchen Sink	1/2"	1/2"	1-1/2"	Demer's Furnished Sink, Rough-in & Connected by Plumber.

P-1A, P-2A & P-3A Shall be installed in accordance with HANDICAPPED requirements.

GENERAL NOTES

1. COMPLY WITH ALL APPLICABLE FEDERAL, STATE AND LOCAL CODES AND ORDINANCES.
2. ALL EQUIPMENT FURNISHED AND INSTALLED BY CONTRACTOR SHALL BE GUARANTEED AGAINST DEFECTS IN MATERIAL AND WORKMANSHIP FOR A PERIOD OF ONE (1) YEAR FROM DATE OF ACCEPTANCE AND ANY DEFECTS SHALL BE RECTIFIED BY CONTRACTOR WITHOUT COST TO OWNER.
3. FURNISH AND INSTALL INDICATED PLUMBING FIXTURES COMPLETE WITH FAUCETS, STOP VALVES AND TRAPS.
4. PROVIDE ELECTRIC WATER HEATER OF INDICATED SIZE AND CAPACITY WITH TEMPERATURE-PRESSURE RELIEF VALVE, THERMOSTAT CONTROL AND 100 PERCENT SAFETY.
5. UNDERGROUND DRAIN, WASTE AND VENT SHALL BE SERVICE WEIGHT CAST IRON AND ABOVE GROUND SHALL BE SCHEDULE 40 PVC.
6. DOMESTIC WATER 2 1/2" & LARGER SHALL BE SCHEDULE 40 GALVANIZED STEEL, 2" AND SMALLER SHALL BE TYPE "L" COPPER.
7. GAS PIPING SHALL BE SCHEDULE 40 BLACK STEEL.
8. INSULATE ALL HOT AND COLD WATER PIPES WITH 1/2 INCH FIBERGLASS INSULATION WITH FIRE RETARDANT JACKET.
9. METAL DUCTWORK TO BE IN ACCORDANCE WITH SHAWM LOW PRESSURE DUCT CONSTRUCTION STANDARDS.
10. ALL DUCT ELBOWS TO HAVE TURNING VANES. ALL BRANCH TAKE-OFFS TO HAVE ADJUSTABLE VOLUME DAMPERS OR ADJUSTABLE SPLITTER DAMPERS.
11. ALL SUPPLY AND OUTSIDE AIR DUCTWORK SHALL BE INSULATED WITH 1 1/2 INCH PLANKET INSULATION. ALL FLEXIBLE DUCTWORK SHALL ALSO BE INSULATED.
12. ALL SUPPLY AIR DIFFUSERS SHALL BE TITUS MODEL TDC WITH SQUARE TO ROUND HEX ADAPTER OR EQUAL.
13. ALL RETURN AIR REGISTERS SHALL BE TITUS 238L5 OR EQUAL.
14. LOCATION AND SUPPORT SYSTEM FOR ALL MECHANICAL EQUIPMENT SUPPORTED FROM SUPPORTED FROM STRUCTURE SHALL BE APPROVED BY STRUCTURAL ENGINEER.

EQUIPMENT SCHEDULE

- E.F. #1-44: ROOF EXHAUST FAN MODEL NO. PBE-42-54, BIKROSCREEN, BACKDRAFT DAMPER, DISCONNECT SWITCH, 25000 CFM @ 1/8" S.P., 672 RPM, 5 HP @ 440/3Ø.
- E.F. #5446: ROOF EXHAUST FAN MODEL NO. PBE-24-4, BIKROSCREEN, BACKDRAFT DAMPER, DISCONNECT SWITCH, 4800 CFM @ 1/8" S.P., 624 RPM, 1/2 HP @ 120/1Ø.
- E.F. #7: ROOF EXHAUST FAN MODEL NO. CB-10-S, BAKELONAM DAMPER, DISCONNECT SWITCH, 800 CFM @ 1/4" S.P., 1120 RPM, 1/4 HP @ 120/1Ø.
- AMB #1: TRANE AIR HANDLING UNIT MODEL NO. RAVD51VC, THERMOSTAT, 2800 CFM @ .68" EXT. S.P., 2 1/4 HP @ 120/1Ø FAN MOTOR, 56 KWH TOTAL COOLING CAPACITY, 42 KWH SENSIBLE COOLING CAPACITY.
- WATE FURNISH: TRANE GAS FIBER JACKET FURNACE MODEL NO. GP4041100, 110,000 BTU GAS INPUT, 68,000 HEAT OUTPUT.
- CU #5: TRANE CONDENSING UNIT MODEL NO. PAC-544, 54,000 TOTAL COOLING CAPACITY, 42 KWH SENSIBLE COOLING CAPACITY, 440/3Ø.

NOTE: EXTERNAL STATIC PRESSURE DROP ON AHU #1 DOES NOT INCLUDE DROP THRU DUCT FURNACE

MECHANICAL LEGEND

- SANITARY SWM
- VENT PIPE; V
- COLD WATER, DOMESTIC; C.W.
- HOT WATER, DOMESTIC; H.W.
- CONDENSATE DRAIN PIPE; D
- REFRIGERANT SUCTION; RS
- REFRIGERANT LIQUID; RL
- DRY; E
- FLOOR CLEANOUT; C.F.
- GATE VALVE
- GAS COCK VALVE
- VALVE IN POSITION; PIP
- FLOOR DRAIN, FLE. DN. OR AREA DRAIN; A.D.
- WASTE DAMPER; W.D.
- FLEXIBLE DUCT
- FLEXIBLE CONNECTOR
- THERMOSTAT
- REGISTER
- OUTSIDE AIR
- SUPPLY AIR DIFFUSER
- SUPPLY AIR
- RETURN AIR REGISTER
- RETURN AIR
- EXHAUST
- HOSE BIB
- VENT THRU ROOF
- OUTSIDE AIR INTAKE
- MOTOR OPERATED DAMPER

OK, Bill Shaw  
Maurice Mollino  
10/15/83

PRINTED  
MONARCH MODELS SEP 23 1983  
SEP 27 1983 PCI ENGINEERING  
DAYTON, OHIO TOWSON, MD.

NO.	DATE	DESCRIPTION
REVISIONS		
		MONARCH MODELS COMPANY RIVERSIDE, HARFORD COUNTY
		L.H. CRANSTON & SONS, INC. MECHANICAL CONTRACTOR TIMONILIA, MARYLAND
<b>PCI ENGINEERING, INC.</b> Mechanical and Electrical Consultants 1025 Cromwell Bridge Rd. Baltimore, MD 21204		
TITLE: MECHANICAL DETAILS, RISER, NOTES, SCHEDULES & LEGENDS		
DESIGN: RSB	DATE: 7-2-83	DWG NO.
DRAWN: RSB	SCALE: AS SHOWN	NO.
ENGR:	JOB NO. 2720	

PCI 005 NO. 2720 RSG 7-1-83 DWR #2