

ELECTRICAL-BUILDING FLOOR PLAN
SCALE: 1/16" = 1'-0"

LIGHTING FIXTURE SCHEDULE							
FIXTURE		LAMPS			REMARKS		
TYPE	SYMBOL	DESCRIPTION	VOLT	NO.		WATT	
A	○	2 X 4 STATIC FLUORESCENT TROFFER, 1/4-1/2 ACRYLIC PRISMATIC LENS.	277	4	F40T12 CM	GAY-BRITE NO. 30244-SR1120	
B	○	2 X 2 STATIC FLUORESCENT TROFFER, 1/4-1/2 ACRYLIC PRISMATIC LENS.	277	2	F40CY/U	GAY-BRITE NO. 30222-SR112C	
C	○	INCANDESCENT PORCELAIN LAMP HOLDER	120	1	A-19	100	
D	□	SURFACE MOUNTED INCANDESCENT, LEXAN DIFFUSER, WEATHERTIGHT.	120	1	A-19	75	LIGHTOLIER "BALL EX" NO. 6776 OR EQUAL
E	○	INDUSTRIAL TYPE METAL HALIDE PENDANT MOUNTED	277	1	M-175/BU	175	LUMARK #M18-QA16-175-DRC 16
F	○	INDUSTRIAL TYPE METAL HALIDE PENDANT MOUNTED	277	1	M-400	400	LUMARK #M18-QA16M-400
G	■	EXTERIOR WALL MOUNTED HIGH PRESSURE SODIUM TIME-CLOCK CONTROLLED.	277	1	E23.5	150	KEENE "WALLCUBE" #323-150LX-277V
H	⊕	EXIT SIGN UNIVERSAL MOUNT, ARROWS PER CODE, SHADED AREA INDICATES FACE(S). LAMPS PROVIDED WITH UNIT.	120	-	-	-	EQUAL TO EMERGI-LITE #ESM12-R/G
J	⊕	EMERGENCY EXIT LIGHTING BATTERY UNIT, WALL MOUNTED W/HALOGEN HEADS.	120	2	HALOGEN	18	EQUAL TO EMERGI-LITE #LSM18-2-120V

DRAWING NOTES
 ① PROVIDE 320 FEET OF 800A 3Ø 3W W/ EOT, GROUND, BUS, PLUG-IN TYPE BUSDUKT (SQUARE D I-LINE COPPER). PROVIDE THE FOLLOWING FUSEABLE BUSDUKT PLUGS: 0-30A/3Ø, 5-60A/3Ø, 6-100A/3Ø & 6-200A/3Ø. COORD LOCATIONS WITH OWNER FURNISHED EQUIPMENT.

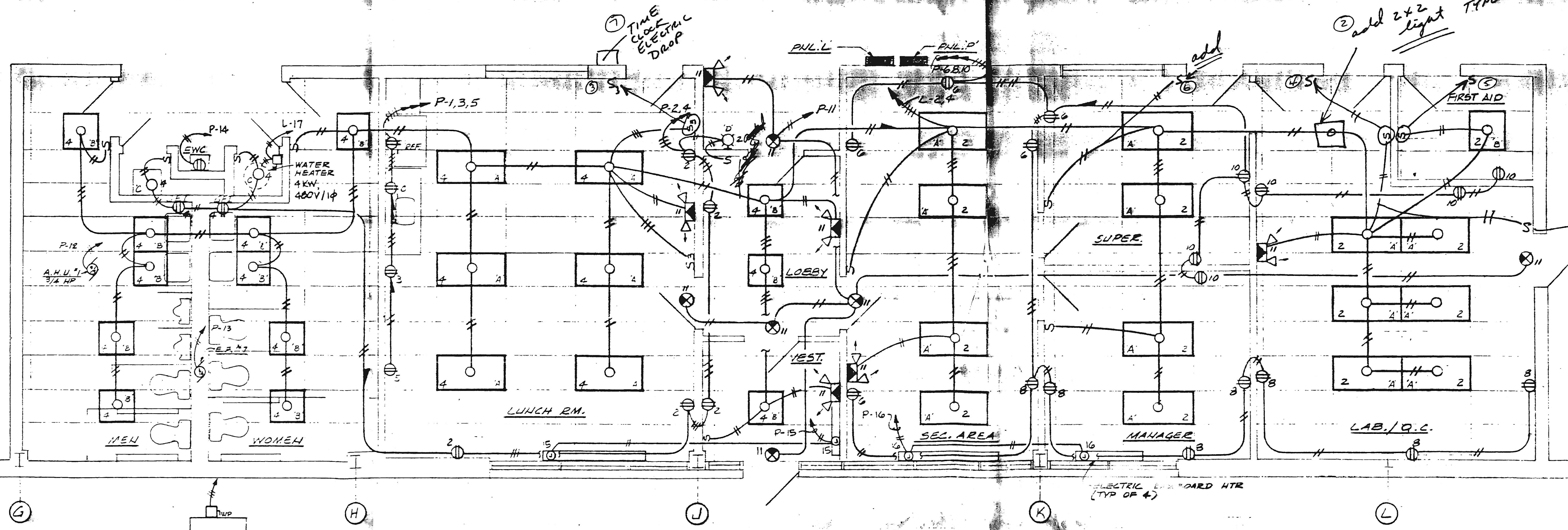
CHANGES

- CHANGE THE ROW OF LIGHTS ON LINE E FROM 175W TO 400W - TIE THIS ROW INTO OTHER SECTION OF 400W LIGHTS
- ADD A 2X2 LIGHT (TYPE B) IN THE DOOR ENTRANCE AREA
- MOVE SWITCH IN LUNCHROOM TO THE OUTSIDE BLOCK WALL OF THE PLANT
- MOVE SWITCH IN R.C. LAB TO PLANT BLOCK WALL
- MOVE SWITCH IN FIRST AID ROOM TO PLANT BLOCK WALL
- ADD SWITCH IN SUPERINTENDENT'S OFFICE AT PLANT BLOCK WALL
- NEED A SWITCH IN LOBBY AS SHOWN
- NEED ELECTRIC DROP FOR TIME CLOCK OUTSIDE LUNCH ROOM DOOR
- ADD A SWITCH TO THE OUTSIDE ENTRANCE/EXIT OF THE R.C. LAB AS SHOWN

THESE SWITCHES CAN BE FLUSH MOUNTED INSIDE THE BLOCK WALL DELIVERANCE COVERS ARE USED TO COVER W/TS 1/21/83
 FLUSH MOUNT ALSO

W.T. Shaw
 Monarch Molders
 9/29/83

PRELIMINARY NOT FOR CONSTRUCTION



ELECTRICAL-OFFICE FLOOR PLAN
SCALE: 1/16" = 1'-0"

Also
 - Emergency lights are shown tied into 277V source - this should be 120V line
 - Can we tie the fluorescent office lights into the 120V circuit instead of the 277V line for safety reasons?
 WTS 10/1/83

NO.	DATE	DESCRIPTION
REVISIONS		
MONARCH MOLDING COMPANY RIVERSIDE, HANFORD COUNTY		
L.H. CRANSTON & SON, INC. ELECTRICAL CONTRACTORS TIMONIUM, MARYLAND		
PGO ENGINEERING, INC. Mechanical and Electrical Consultants 1025 Cromwell Bridge Rd. Balto. MD. 21204		
TITLE: ELECTRICAL FLOOR PLAN		
DESIGN: KF/DAS	DATE: 9-22-83	OWN: N
DRAFT: EP	SCALE: AS NOTED	
ENGR: PR/DE	JOB No: 2729	

PRINTED
 SEP 22 1983
 PCI ENGINEERING
 TOWSON, MD