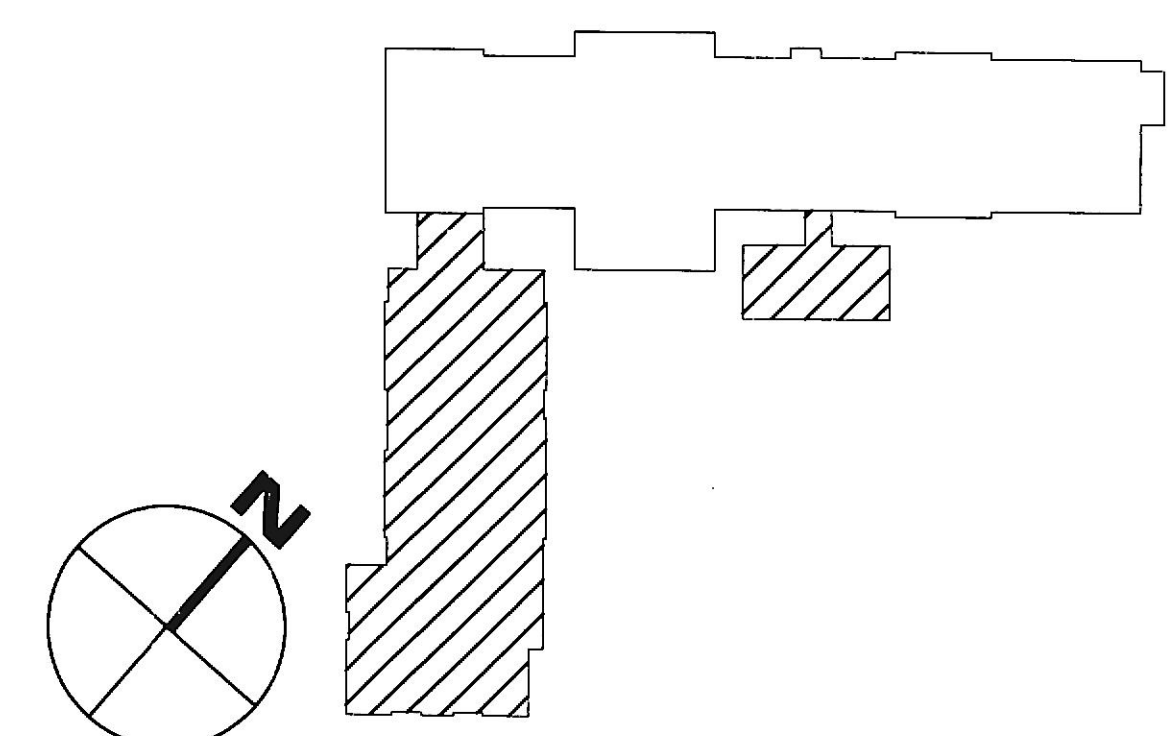


- ### PLAN NOTES
- CONNECT TO SPARE 1-POLE, 20 AMP CIRCUIT BREAKER IN PANEL 'KP' WITH 2#12 AWG + 1#12 GROUND.
 - REFER TO GROUND FLOOR ELECTRIC ROOM PART PLAN - ASSISTED LIVING WING ON DRAWING E4.1, FOR ADDITIONAL INFORMATION IN THIS AREA.
 - JUNCTION BOX FOR POWER TO MOTORIZED DAMPER - COORDINATE EXACT LOCATION PRIOR TO ROUGH-IN.
 - DEDICATED RECEPTACLE FOR SP-1 AND SP-2.
 - DEDICATED SIMPLEX RECEPTACLE FOR ELEVATOR SUMP PUMP SP-3.
 - CONNECT TO RECEPTABLES AT TOP OF SHAFT.
 - JUNCTION BOX FOR SMOKE DAMPER - CONNECT TO FIRE ALARM SYSTEM AS REQUIRED.
 - IRRIGATION CONTROL PANEL WITH INTEGRAL TIMECLOCK - COORDINATE EXACT LOCATION WITH PLUMBING WORK.
 - EXISTING HVAC COMPRESSOR TO REMAIN.
 - EXISTING HVAC COMPRESSOR TO BE RELOCATED. EXTEND EXISTING CIRCUIT AND RECONNECT AS REQUIRED.
 - EXISTING DUCTLESS SPLIT SYSTEM COMPRESSOR TO BE RELOCATED. EXTEND EXISTING CIRCUIT AND RECONNECT AS REQUIRED.
 - CONNECT TO 120 VOLT NORMAL POWER CIRCUIT(S) IN RESIDENT ROOMS (REFER TO 1/4" SCALE UNIT PART PLANS ON DRAWING E3.2).
 - CONNECT TO 120 VOLT GENERATOR POWER CIRCUIT IN RESIDENT ROOM (REFER TO 1/4" SCALE UNIT PART PLANS ON DRAWING E3.2).
 - CONNECT TO RECEPTACLE IN RESIDENT BATHROOM (REFER TO UNIT PART PLANS).
 - JUNCTION BOX FOR 120 VOLT CONNECTION TO FUTURE RECEPTACLE AT BATHROOM SINK.
 - CONNECT EXHAUST FAN TO 120 VOLT LIGHTING CIRCUIT AND CONTROLS SERVING THIS ROOM/AREA.
 - CONNECT TO OUTDOOR UNIT CU-30 FOR POWER AND CONTROL.
 - MOUNT RECEPTACLE WITH WEATHERPROOF COVER ON LIGHT POLE.
 - CONNECT TO NEW 2-POLE, 20 AMP CIRCUIT BREAKER IN PANEL 'NPG' WITH 2#12 + #12 GROUND.
 - CONNECT TO NEW 2-POLE, 40 AMP CIRCUIT BREAKER IN PANEL 'NPG' WITH 2#8 + #10 GROUND.

- ### GENERAL NOTES
- ALL EXISTING WORK SHOWN IS TO REMAIN UNLESS NOTED OTHERWISE.

GROUND FLOOR PLAN ADDITION - POWER
 SCALE: 1/8" = 1'-0"
 0 2' 4' 8' 16'



KEY PLAN - AREA OF WORK
 NO SCALE

REVISIONS	BY
PERMIT COMMENTS	
REVISION 2	
ADDENDUM #2	
PTAC REVISIONS	

Professional Certification
 I certify that these documents were prepared or approved by me, and that I am duly licensed Professional Engineer under the laws of the State of Maryland, license number 22792, expiration date August 04, 2020.

SRBR
 MEP Consulting Engineers since 1959
 757 Frederick Road Suite 300 -
 Catonsville, Maryland 21228
 Phone: 410-866-7282
 Web: www.SRBRengineers.com

Lorien Nursing - Elkridge Addition
 7615 Washington Blvd
 Elkridge, Maryland 21075

GROUND FLOOR PLAN ADDITION POWER

DATE	March 11, 2020
SCALE	As Noted
DRAWN	
JOB	
SHEET	E1.2

PTAC REVISIONS 3/11/2020
 SRBR No:18131