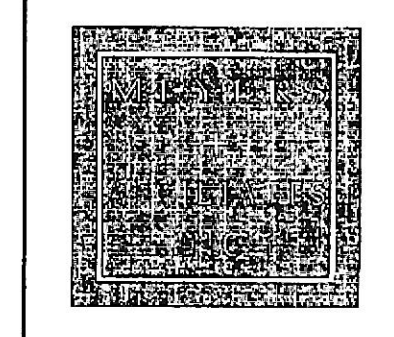
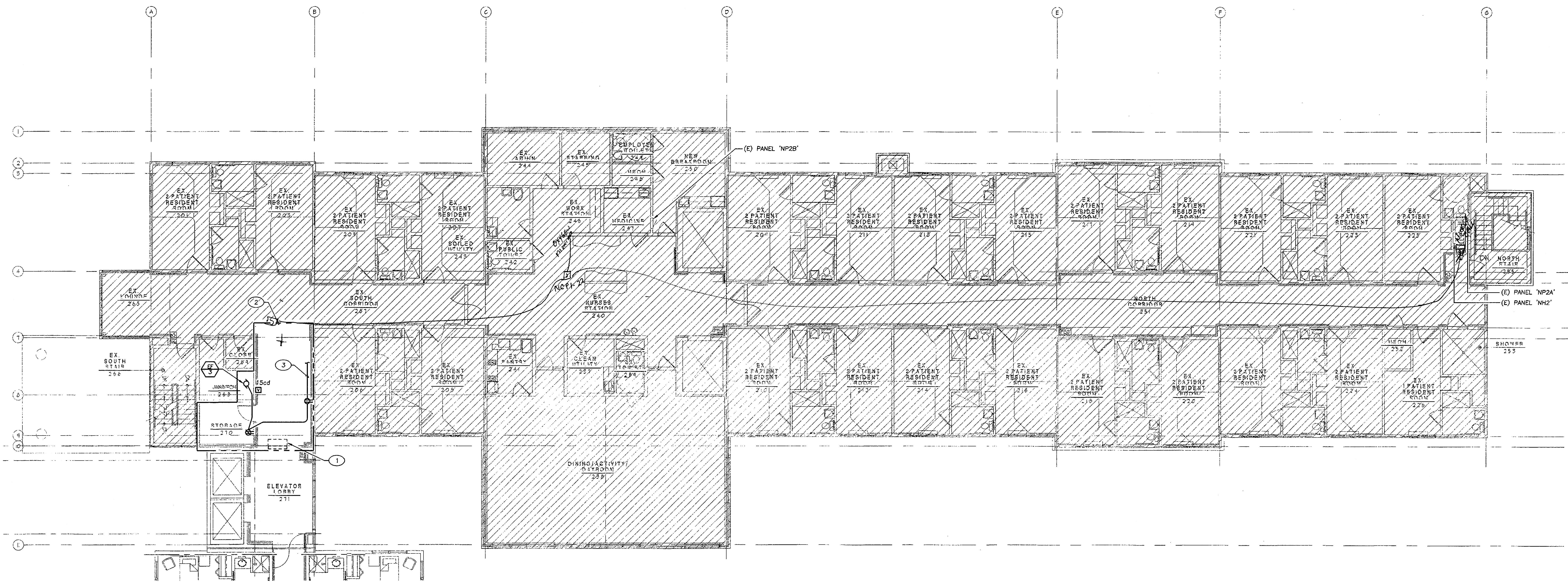


REVISION	BY
PERMIT COMMENTS	
REVISION 2	
ADDENDUM #2	



Professional Certification
I certify that these documents were prepared or approved by me, and that I am duly licensed Professional Engineer under the laws of the State of Maryland, license number 22792, expiration date August 04, 2020.

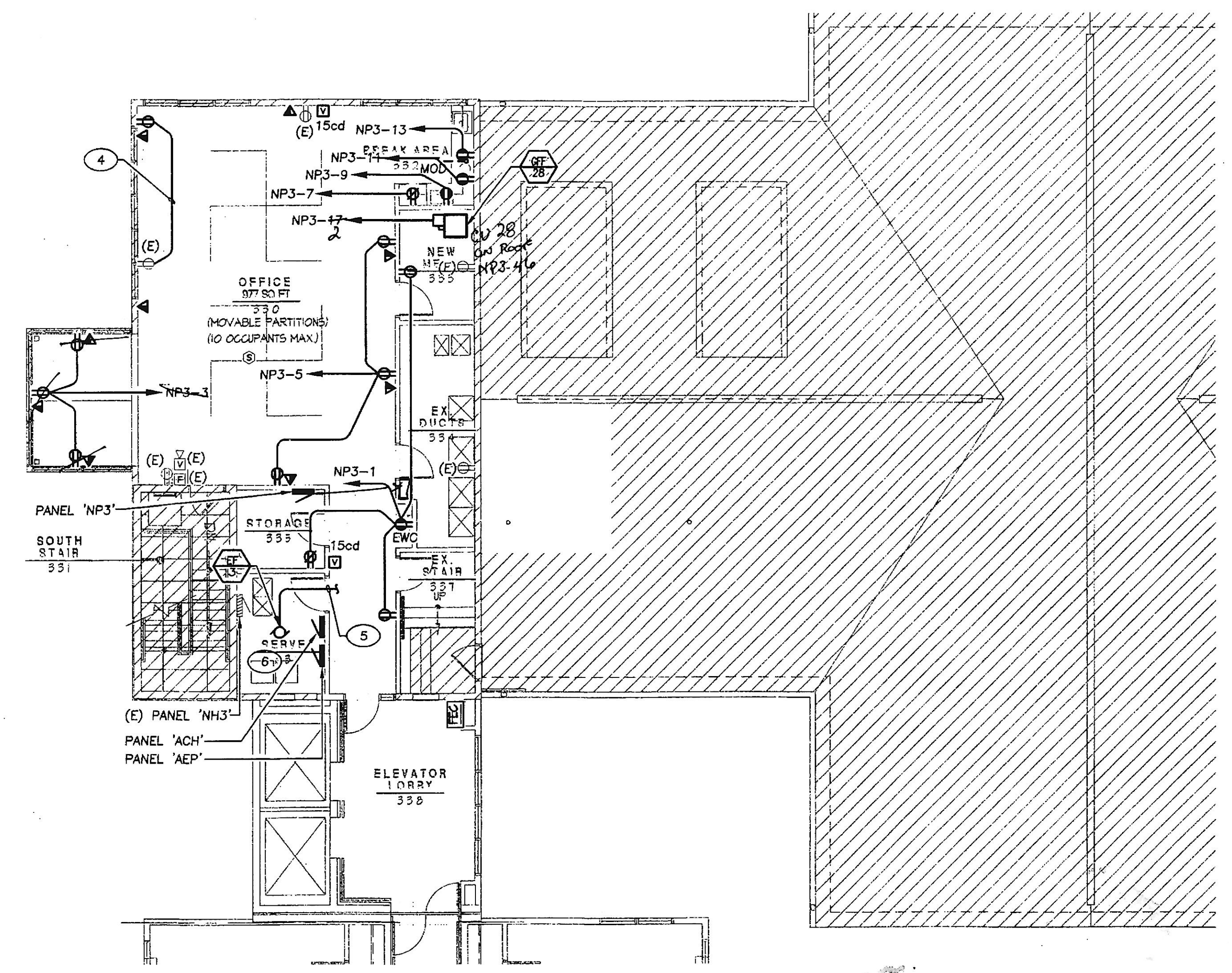
SRBR
MEP Consulting Engineers since 1959
737 Frederick Road, Suite 300 - Catonsville, Maryland 21228
Phone: 410-669-7262
Web: www.SRBRengineers.com



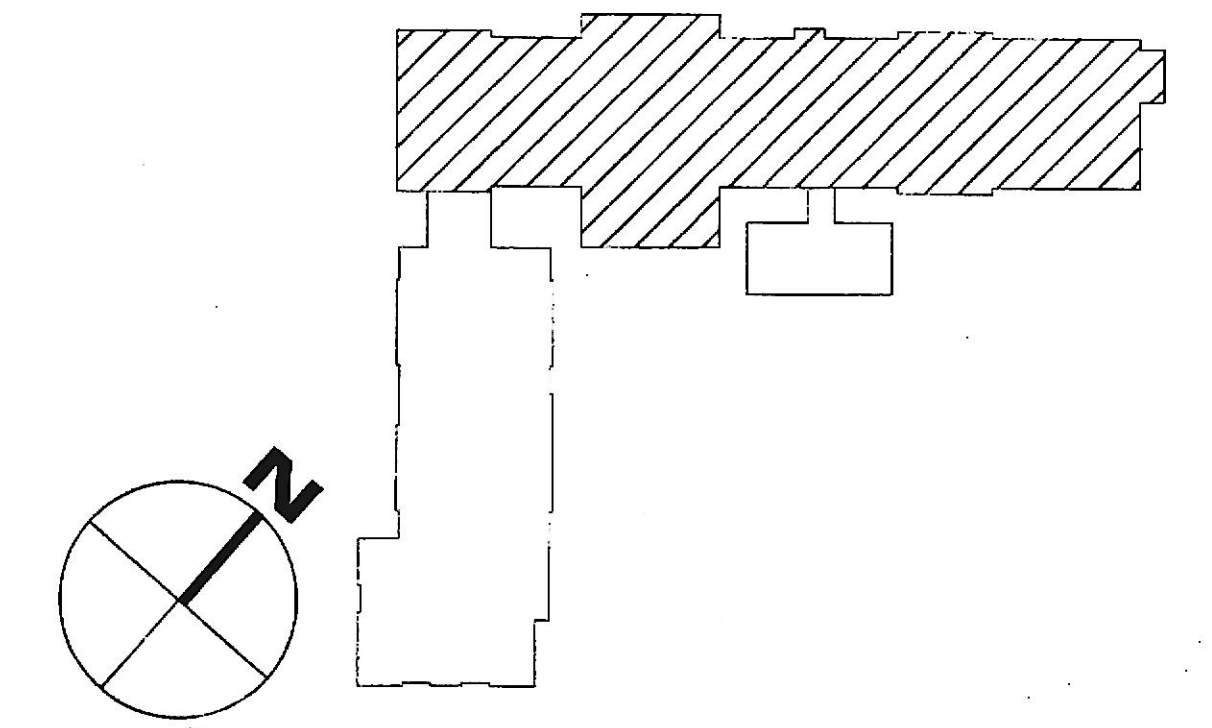
SECOND FLOOR PLAN - POWER
SCALE: 1/8" = 1'-0"
0 2' 4' 8' 16'

- PLAN NOTES**
- EXISTING PTAC UNIT TO BE REMOVED - DISCONNECT AND REMOVE WIRING BACK TO PANELBOARD. MAINTAIN EXISTING CIRCUIT BREAKER AS SPARE.
 - EXISTING RESIDENT UNIT TO BE DEMOLISHED - REMOVE EXISTING RECEPTACLES, LIGHTS, SWITCHES, NURSE CALL, FIRE ALARM, AND OTHER ELECTRICAL DEVICES AND ASSOCIATED WIRING.
 - CONNECT TO EXISTING 120 VOLT CORRIDOR RECEPTACLE CIRCUIT.
 - CONNECT TO EXISTING 120 VOLT RECEPTACLE CIRCUIT AS INDICATED.
 - CONNECT TO EXISTING 120 VOLT RECEPTACLE CIRCUIT FEEDING SERVER RACK.
 - RELOCATE AND ROTATE EXISTING SERVER RACKS AS INDICATED.

- GENERAL NOTES:**
- ALL EXISTING WORK SHOWN IS TO REMAIN UNLESS NOTED OTHERWISE.



THIRD FLOOR PLAN - POWER
SCALE: 1/8" = 1'-0"
0 2' 4' 8' 16'



KEY PLAN - AREA OF WORK
NO SCALE

Lorien Nursing - Elkridge Addition
 7615 Washington Blvd.
 Elkridge, Maryland 21075

SECOND & THIRD FLOOR PLANS POWER

DATE	Dec. 06, 2019
SCALE	As Noted
DRAWN	
JOB	
SHEET	