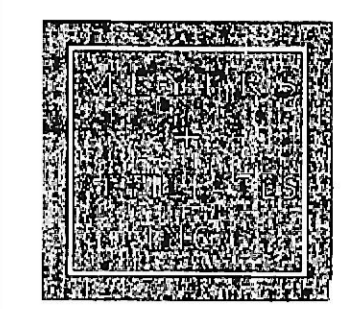


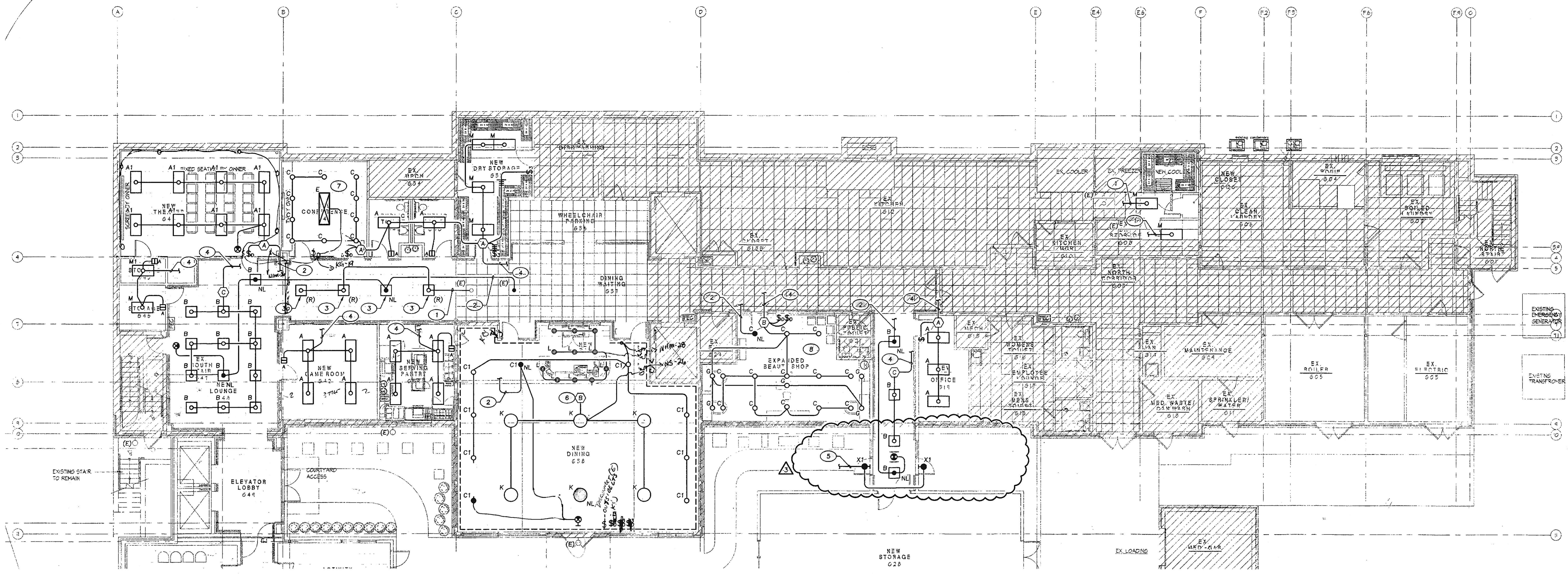
REVISION	BY
PERMIT COMMENTS	△
REVISION 2	△
ADDENDUM #2	△



Professional Certification
I certify that these documents were prepared or approved by me, and that I am duly licensed Professional Engineer under the laws of the State of Maryland, license number 22792, expiration date August 04, 2020.

SRBR
MEP Consulting Engineers since 1939
757 Frederick Road Suite 300 -
Catonville, Maryland 21228
Phone: 410/669-7382
www.SRBRengineers.com

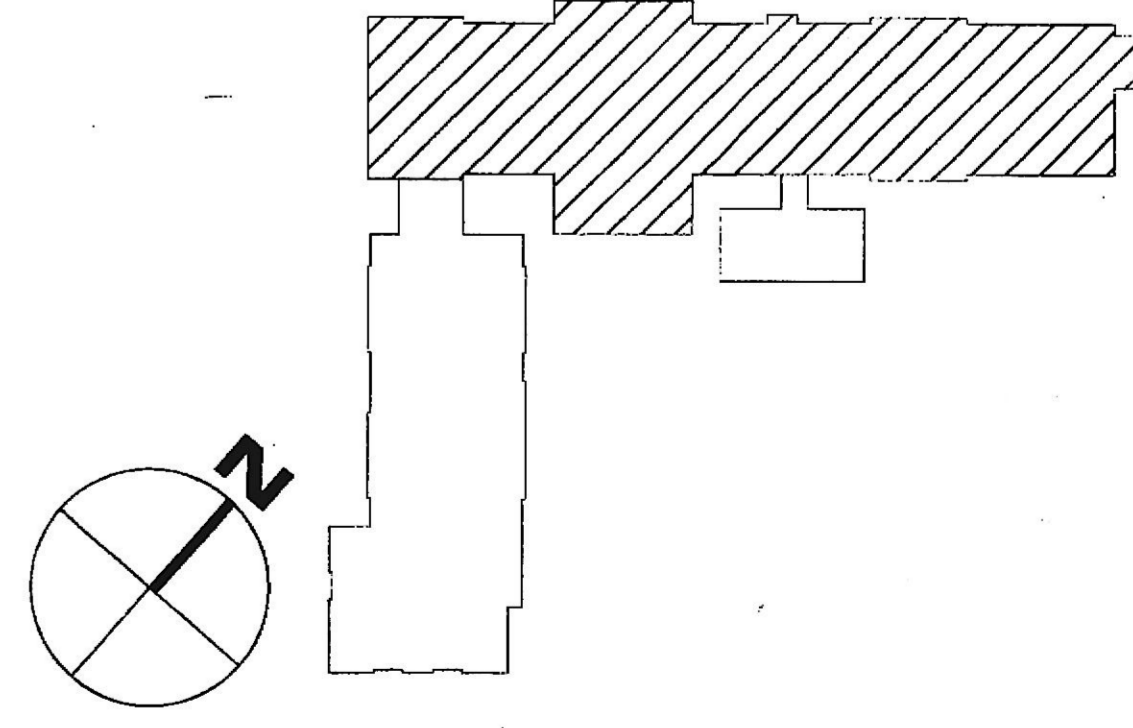
Lorien Nursing - Elkridge Addition
 7615 Washington Blvd
 Elkridge, Maryland 21075



GROUND FLOOR PLAN - LIGHTING
SCALE: 1/8" = 1'-0"
0' 2' 4' 8' 16'

- PLAN NOTES**
- CONNECT TO EXISTING LIGHTING CIRCUIT AND CONTROLS SERVING THIS AREA.
 - CONNECT TO EXISTING EMERGENCY/NIGHTLIGHT CIRCUIT SERVING THIS AREA.
 - THIS 2'X2' PARABOLIC FIXTURE IS EXISTING AND RELOCATED FROM NEW FIRST FLOOR PHYSICAL THERAPY ROOM. CLEAN, RE-LAMP AND/OR REPAIR AS NECESSARY.
 - CONNECT TO EXISTING LIGHTING CIRCUIT SERVING THIS AREA.
 - CONNECT TO EXISTING EXTERIOR SECURITY LIGHTING CIRCUIT NEH-2.
 - LIGHTING FIXTURES TYPE 'K' (EXCEPT FOR NIGHTLIGHT/EMERGENCY LIGHTING) AND TYPE 'U' ARE SWITCHED TOGETHER. LIGHTING FIXTURES TYPE 'L' ARE SWITCHED TOGETHER. LIGHTING FIXTURES TYPE 'C1' (EXCEPT FOR NIGHTLIGHT/EMERGENCY LIGHTING) ARE SWITCHED TOGETHER, IN THIS ROOM/AREA.
 - LIGHTING FIXTURES TYPE 'C' ARE SWITCHED TOGETHER. LIGHTING FIXTURE TYPE 'E' IS SWITCHED SEPARATELY, IN THIS ROOM/AREA.
 - LIGHTING FIXTURES TYPE 'G' ARE SWITCHED TOGETHER. LIGHTING FIXTURES TYPE 'C' ARE SWITCHED TOGETHER (EXCEPT FOR NIGHTLIGHT/EMERGENCY LIGHTING) IN THIS ROOM/AREA.

- GENERAL NOTES:**
- ALL EXIT SIGNS AND EMERGENCY/NIGHTLIGHTS SHALL BE WIRED AHEAD OF ALL LOCAL SWITCHING.
 - ALL WORK IS NEW UNLESS NOTED OTHERWISE.



KEY PLAN - AREA OF WORK
NO SCALE

GROUND FLOOR PLAN LIGHTING

DATE	Dec. 06, 2019
SCALE	As Noted
DRAWN	
JOB	
SHEET	