

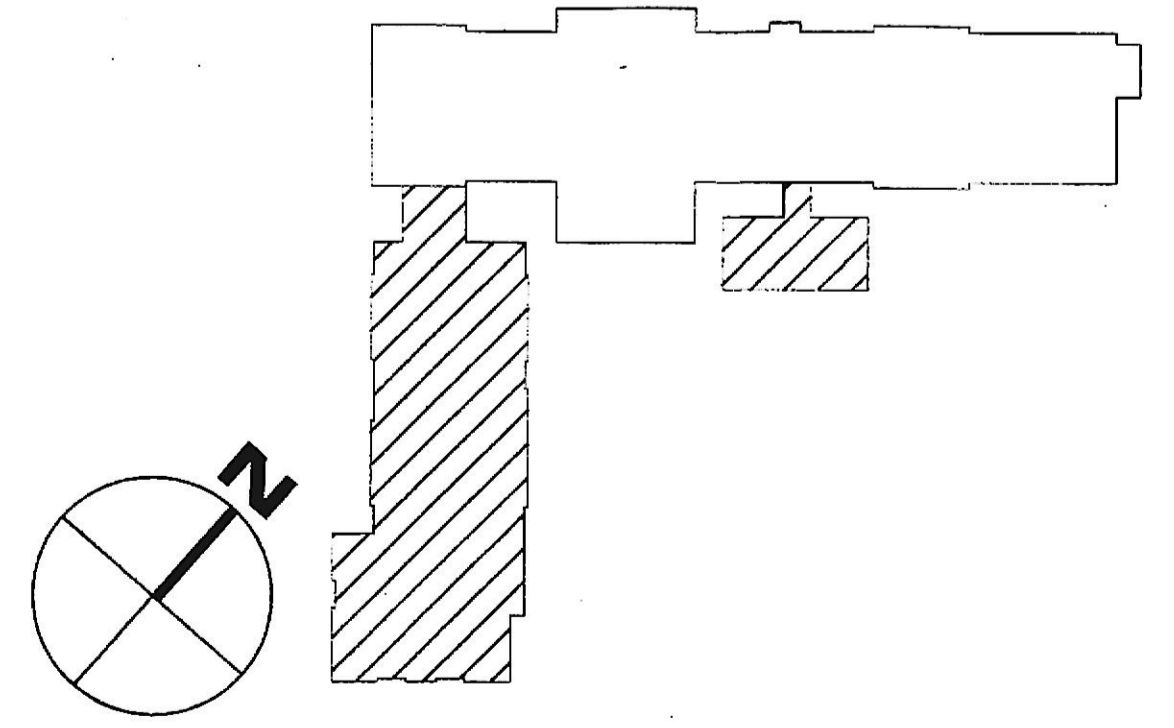
- PLAN NOTES**
- CONNECT TO EXISTING EXTERIOR SECURITY LIGHTING CIRCUIT NEH-2.
 - NEH-12 (SPLIT CIRCUIT) (Nursing wing)
 - LIGHTING IN PUBLIC TOILET TO BE 120 VOLT - CONNECT EXHAUST FAN TO 120 VOLT LIGHTING CIRCUIT FOR COMMON POWER AND CONTROL. PUBLIC TOILET LIGHTING AND EXHAUST FANS ON GROUND, FIRST, SECOND AND THIRD LEVELS ALL TO BE ON THE SAME 120 VOLT CIRCUIT SERVING GROUND FLOOR PUBLIC TOILET.
 - CIRCUIT TO BE TIMECLOCK ON/TIMECLOCK OFF. REFER TO ELEC/TELE ROOM 185 ON DRAWING E1.4 FOR ADDITIONAL INFORMATION.

GENERAL NOTES:

- ALL EXIT SIGNS AND EMERGENCY/NIGHTLIGHTS SHALL BE WIRED AHEAD OF ALL LOCAL SWITCHING.

WORK PREVIOUSLY SHOWN IN THIS AREA HAS BEEN REMOVED FROM THE SCOPE.

FIRST FLOOR PLAN - LIGHTING
SCALE: 1/8" = 1'-0"
0 2' 4' 8' 16'



KEY PLAN - AREA OF WORK
NO SCALE

REVISION	BY
PERMIT COMMENTS	
REVISION 2	
ADDENDUM #2	

Professional Certification I certify that these documents were prepared or approved by me, and that I am duly licensed Professional Engineer under the laws of the State of Maryland, license number 22792, expiration date August 04, 2020.

SRBR
MEP Consulting Engineers since 1959
757 Frederick Road Suite 300 - Catonsville, Maryland 21228
Phone: 410/869-7282
Web: www.SRBRengineers.com

Lorien Nursing - Elkridge Addition
7615 Washington Blvd.
Elkridge, Maryland 21075

FIRST FLOOR PLAN LIGHTING

DATE	Dec. 06, 2019
SCALE	As Noted
DRAWN	
JOB	
SHEET	