

REVISION	BY
PERMIT COMMENTS	△
REVISION 2	△
ADDENDUM #2	△

PLAN NOTES

- 1 CONNECT NEW LIGHT FIXTURE TO EXISTING LIGHTING CIRCUIT AND CONTROLS SERVING THIS AREA.
- 2 CONNECT NEW LIGHT FIXTURE TO EXISTING LIGHTING EMERGENCY/NIGHTLIGHT CIRCUIT SERVING THIS AREA.
- 3 CONNECT TO EXISTING LIGHTING CIRCUIT SERVING THIS AREA.

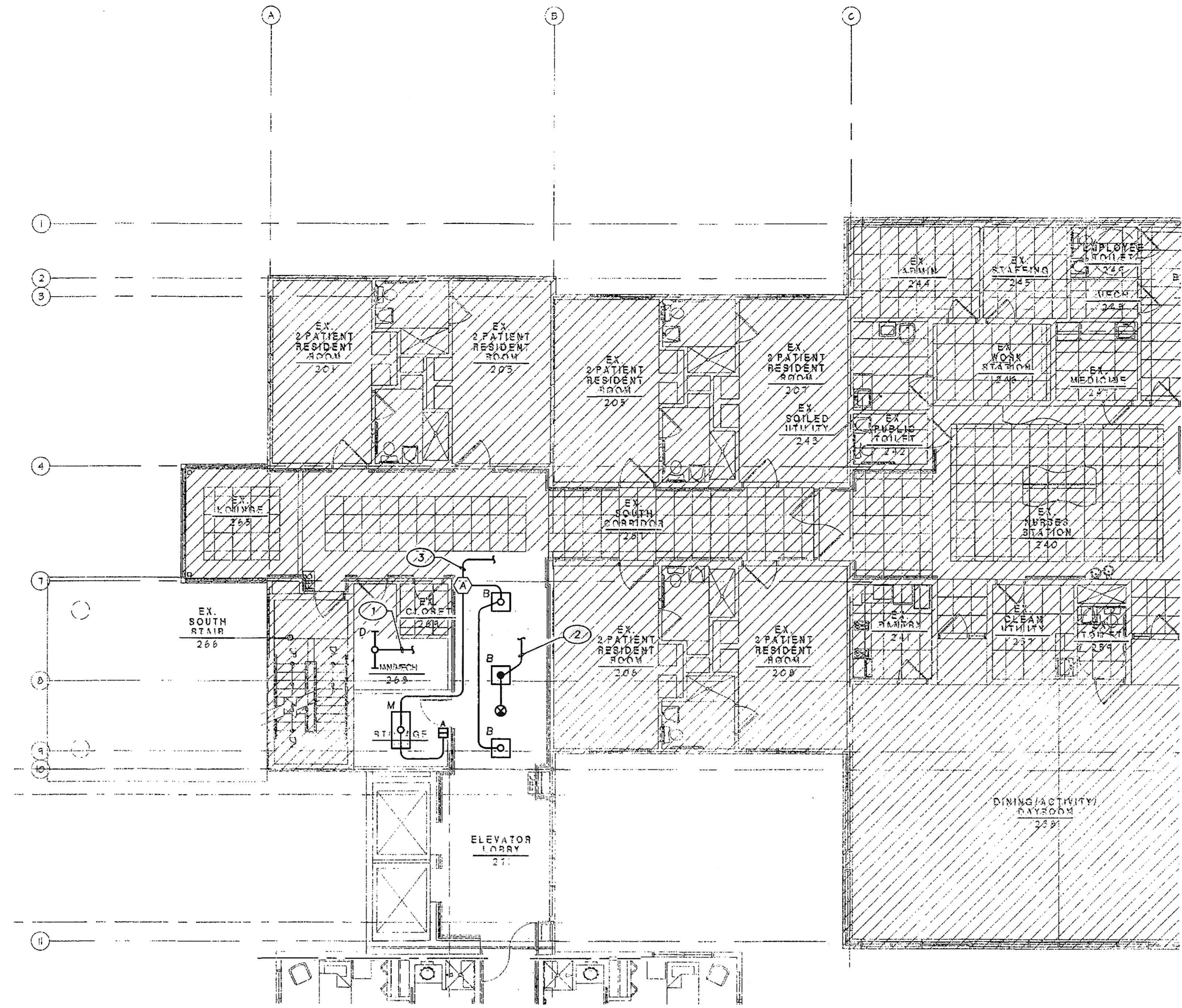
GENERAL NOTES:

1. ALL EXIT SIGNS AND EMERGENCY/NIGHTLIGHTS SHALL BE WIRED AHEAD OF ALL LOCAL SWITCHING.
2. ALL WORK IS NEW UNLESS NOTED OTHERWISE.

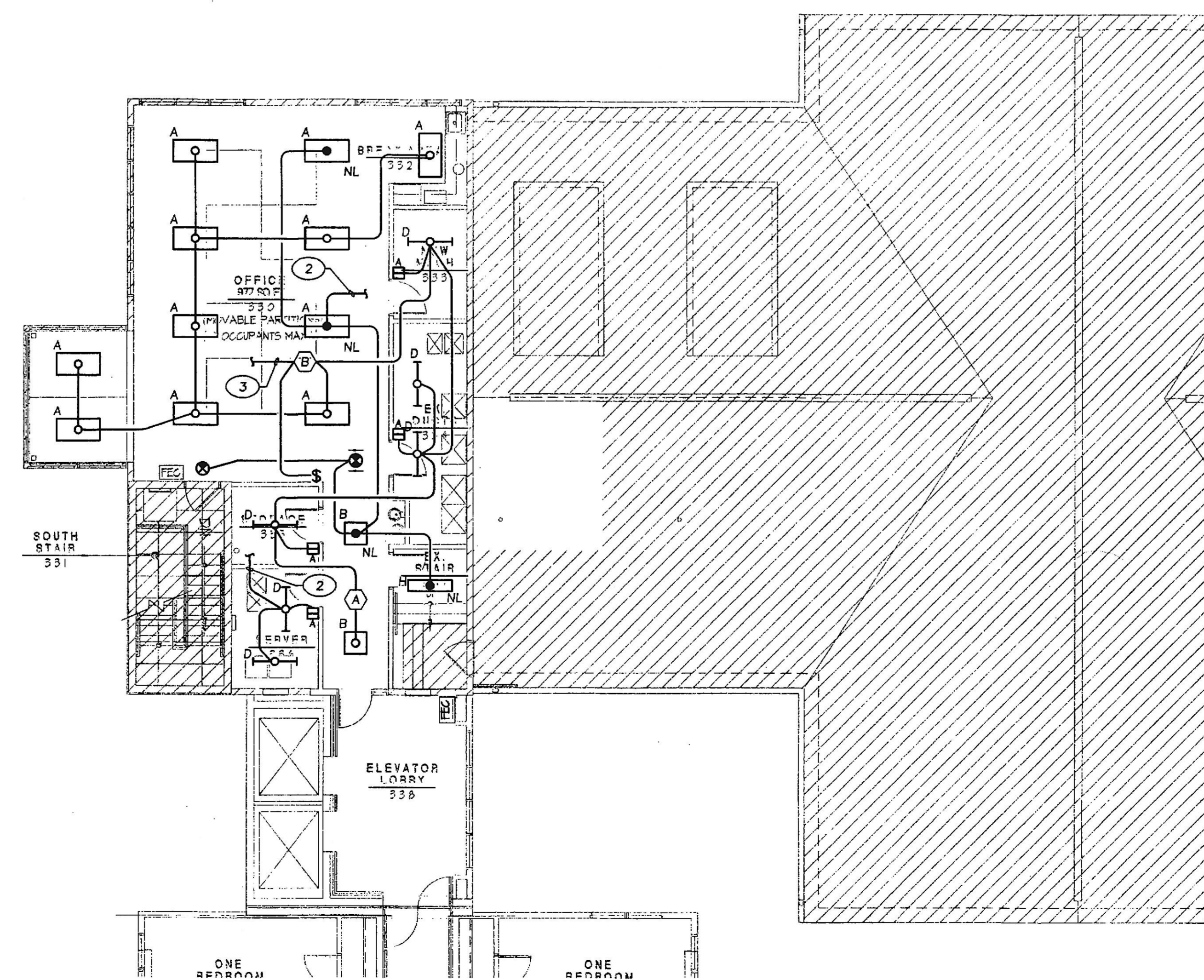
Professional Certification
I certify that these documents were prepared or approved by me, and that I am duly licensed Professional Engineer under the laws of the State of Maryland, license number 22792, expiration date August 04, 2020.



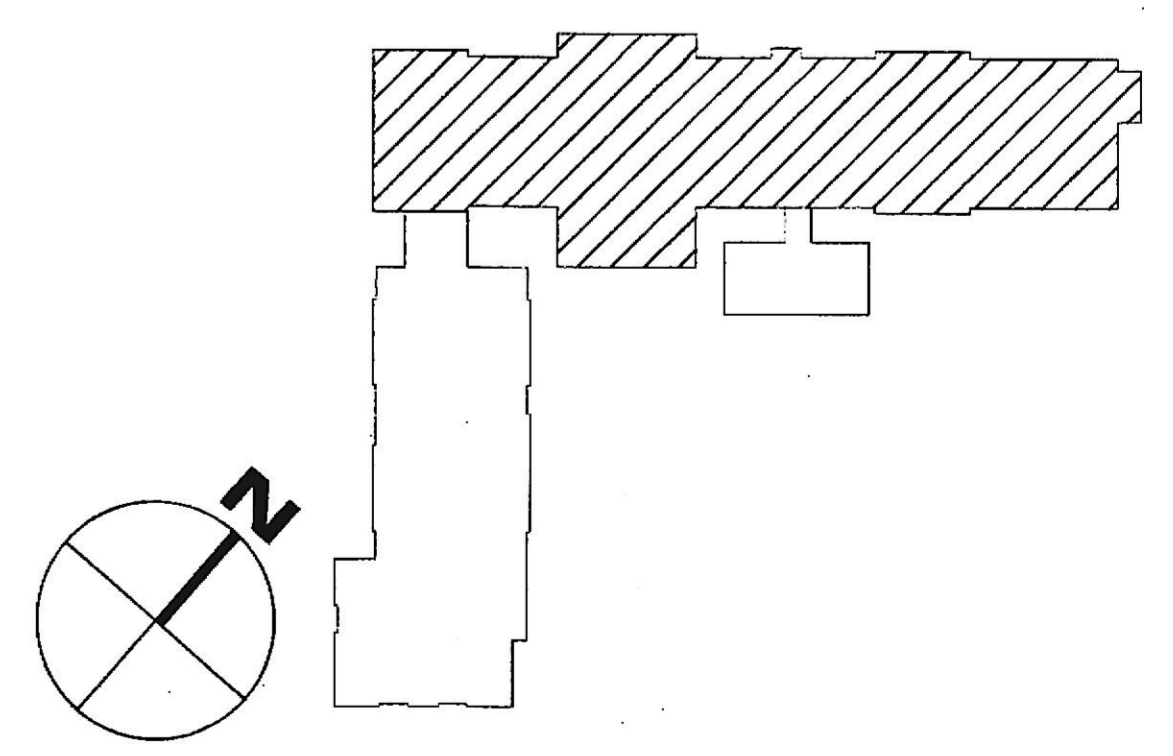
MSP Consulting Engineers since 1959
757 Frederick Road Suite 300 - Catonsville, Maryland 21228
Phone: 410-869-7382
Web: www.SRBRengineers.com



SECOND FLOOR PLAN - LIGHTING
SCALE: 1/8" = 1'-0" 0 2' 4' 8' 16'



THIRD FLOOR PLAN - LIGHTING
SCALE: 1/8" = 1'-0" 0 2' 4' 8' 16'



KEY PLAN - AREA OF WORK
NO SCALE

Lorien Nursing - Elkridge Addition
7615 Washington Blvd
Elkridge, Maryland 21075

SECOND & THIRD FLOOR PLAN LIGHTING

DATE: Dec. 06, 2019
SCALE: As Noted
DRAWN:
JOB:
SHEET: