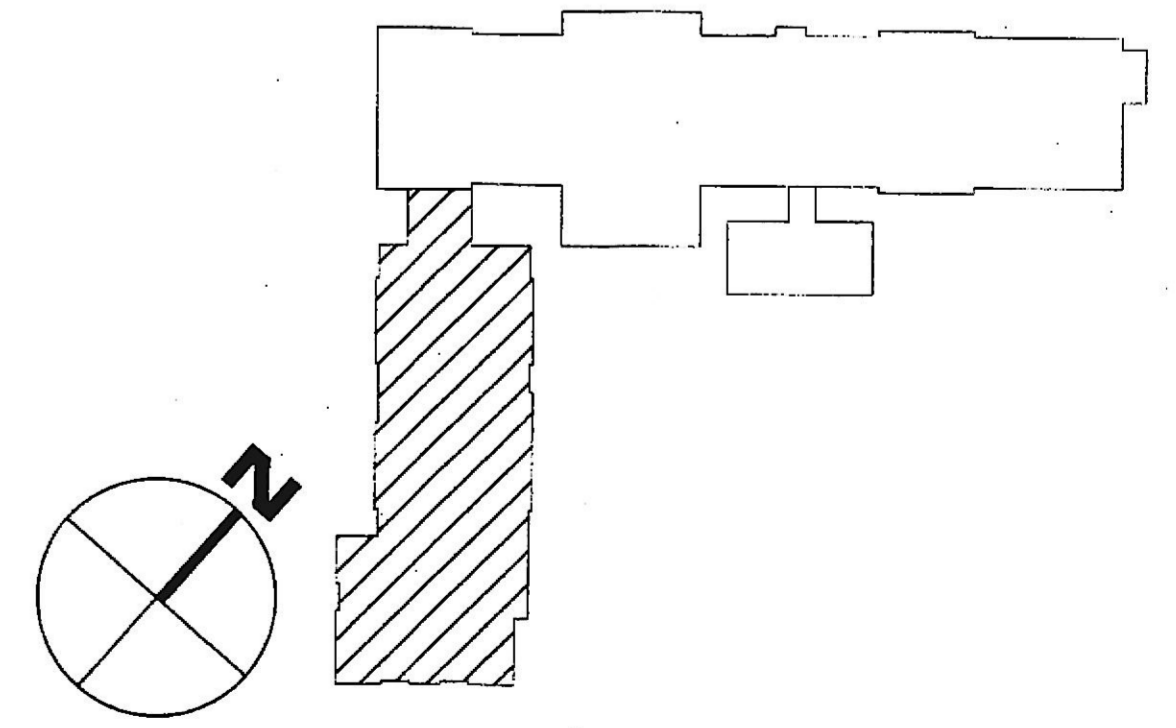


SECOND FLOOR PLAN - LIGHTING
 SCALE: 1/8" = 1'-0"
 0' 2' 4' 8' 16'

- PLAN NOTES**
- 1 NOT USED.
 - 2 LIGHTING IN PUBLIC TOILET TO BE 120 VOLT - CONNECT EXHAUST FAN TO 120 VOLT LIGHTING CIRCUIT FOR COMMON POWER AND CONTROL. PUBLIC TOILET LIGHTING AND EXHAUST FANS ON GROUND, FIRST, SECOND AND THIRD LEVELS ALL TO BE ON THE SAME 120 VOLT CIRCUIT SERVING GROUND FLOOR PUBLIC TOILET. **AH2-26**
 - 3 CONNECT DOWN TO CIRCUIT **AH2-26** AT FLOOR BELOW.
 - 4 CONNECT DOWN TO CIRCUIT **AH2-27** AT FLOOR BELOW.

- GENERAL NOTES:**
1. ALL EXIT SIGNS AND EMERGENCY/NIGHTLIGHTS SHALL BE WIRED AHEAD OF ALL LOCAL SWITCHING.

WORK PREVIOUSLY SHOWN IN THIS AREA HAS BEEN REMOVED FROM THE SCOPE.



KEY PLAN - AREA OF WORK
 NO SCALE

REVISION	BY
PERMIT COMMENTS	
REVISION 2	
ADDENDUM #2	

Professional Certification I certify that these documents were prepared or approved by me, and that I am duly licensed Professional Engineer under the laws of the State of Maryland, license number 22792, expiration date August 04, 2020.

SRBR
 MEP Consulting Engineers since 1959
 757 Frederick Road Suite 300 - Catonsville, Maryland 21228
 Phone: 410-869-7282
 Web: www.SRBRengineers.com

Lorien Nursing - Elkridge Addition
 7615 Washington Blvd
 Elkridge, Maryland 21075

SECOND FLOOR PLAN LIGHTING

DATE	Dec. 06, 2019
SCALE	As Noted
DRAWN	
JOB	
SHEET	