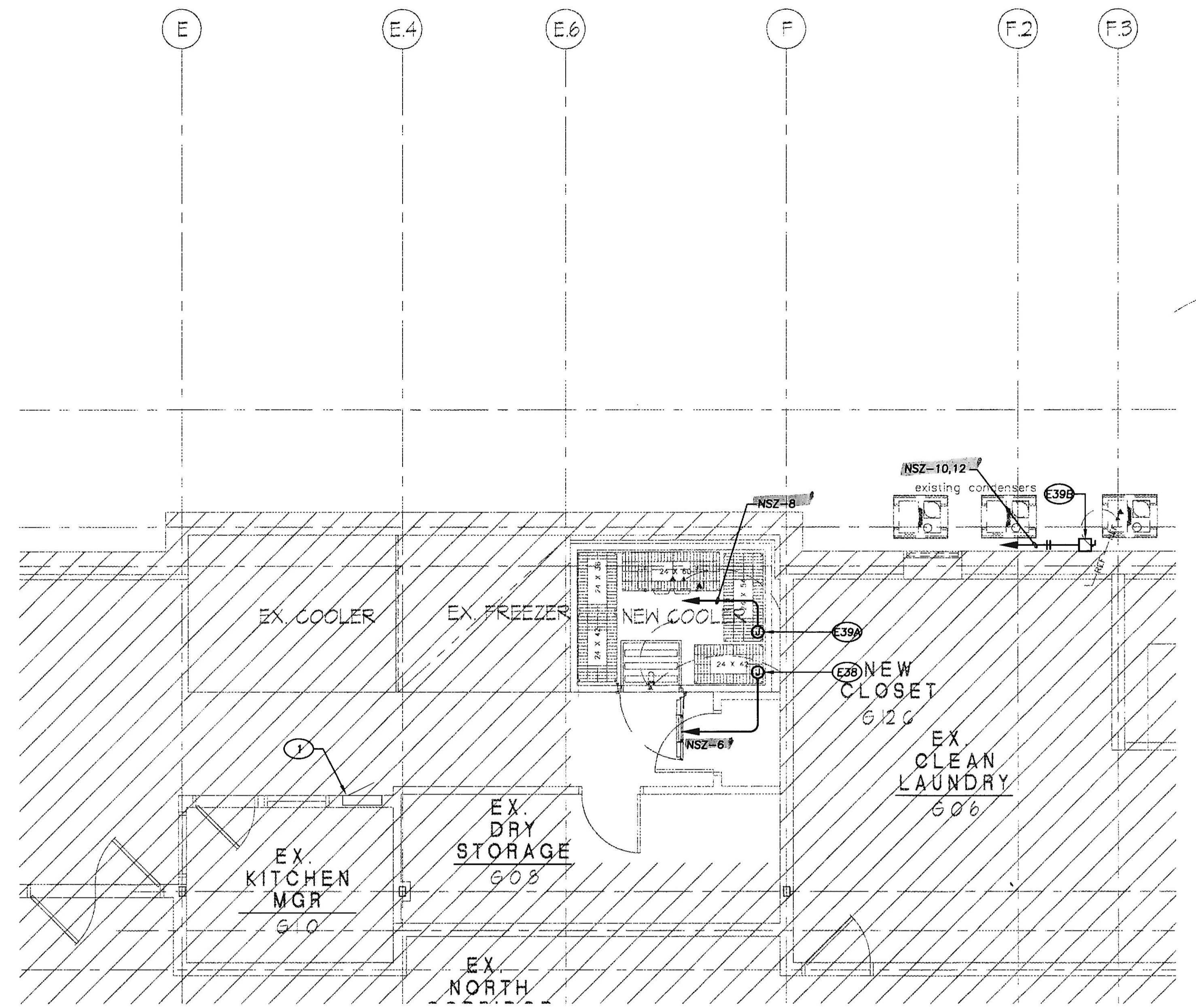


SERVING PANTRY & NEW BAR - POWER
SCALE: 1/4" = 1'-0"



WALK-IN COOLER - POWER
SCALE: 1/4" = 1'-0"

FOOD SERVICE ELECTRICAL SCHEDULE									
ITEM NUMBER	QUANTITY	CONNECTION	WIRE SIZE IN INCHES (EFT)	VOLTAGE	PHASE	LOAD AMPS	W/LOAD	W/REPOWER	DESCRIPTION OF ELECTRICAL CONNECTIONS
E03	1	DR	#12	120	1	15C	-	5-15P	ILW - FOR VENDOR FURNISHED SODA SYSTEM - VERIFY UTILITIES
E11	1	DR	#24	120	1	5.5	-	1/4 5-15P	IW - FOR BACK BAR REFRIGERATOR
E14	1	SPR	#18	208	1	17.3	3.6	1/4 5-15P	IW - FOR HOT FOOD SERVING COUNTER
E15	1	DR	#24	115	1	5.8	-	1/3 5-15P	IW - SANDWICH/SALAD PREP REFRIGERATOR
E18	1	DR	#24	115	1	5.7	-	1/4 5-15P	IW - FOR ICE CREAM CABINET
E19	2	DR	#50	120	1	5.8	0.700	5-15P	IW - FOR SOUP KETTLES
E20	1	DR	#50	120	1	15C	-	5-15P	IW - FOR CONVENIENCE OUTLET IN WALL ABOVE WORK TABLE
E27	1	SR	#90	115	1	3.8	-	1/4 5-15P	IW - FOR REACH-IN REFRIGERATOR
E28	1	DC	DFA	120	1	13.0	1.6	5-15P	DROPCORD OUTLET FOR MICROWAVE OVEN
E29	1	DC	DFA	120	1	15C	-	5-15P	DROPCORD CONVENIENCE OUTLET ABOVE WORK TABLE
E32	1	DR	#50	120	1	15.0	1.8	5-15P	IW - FOR TOASTER
E38	1	JB	#96	120	1	20C	-	-	BTC ON WALK-IN COOLER FOR LIGHTS, HEATERS, ETC. - SEE SHOP DRAWINGS
E39a	1	JB	#96	115	1	1.1	-	-	IW - BTC ON EVAPORATOR COIL FOR WALK-IN COOLER - SEE SHOP DRAWINGS
E39b	1	DS	#36	208-230	1	4.8	-	1/2	BTC ON REMOTE CONDENSING UNIT FOR WALK-IN COOLER - SEE SHOP DRAWINGS

GENERAL NOTES:

- ALL 120 VOLT, 15 AND 20 AMP RECEPTACLES IN FOOD PREPARATION AREAS SHALL BE GFCI PROTECTED IN ACCORDANCE WITH NEC.
- REFER TO FOOD SERVICE DRAWINGS, AND SPECIFICALLY FSZ.0 FOR ADDITIONAL ELECTRICAL WORK AND REQUIREMENTS OF FOOD PREPARATION EQUIPMENT AND AREAS.

PLAN NOTES

- ① EXISTING PANEL 'NZP'.

REVISIONS BY
 PERMIT COMMENTS
 REVISION 2

Professional Certification
 I certify that these documents were prepared or approved by me, and that I am duly licensed Professional Engineer under the laws of the State of Maryland, license number 22792, expiration date August 04, 2020.

SRBR
 MEP Consulting Engineers since 1959
 737 Frederick Road, Suite 300 - Catonsville, Maryland 21228
 Phone: 410.869.7282
 Web: www.SRBRengineers.com

Lorien Nursing - Elkridge Addition
 7615 Washington Blvd
 Elkridge, Maryland 21075

FOOD SERVICE PLANS ELECTRICAL

DATE: May 31, 2019
 SCALE: As Noted
 DRAWN:
 JOB:
 SHEET: **E3.1**
 OF SHEETS

REVISION 2 05/31/2019
 SRBR No:18131