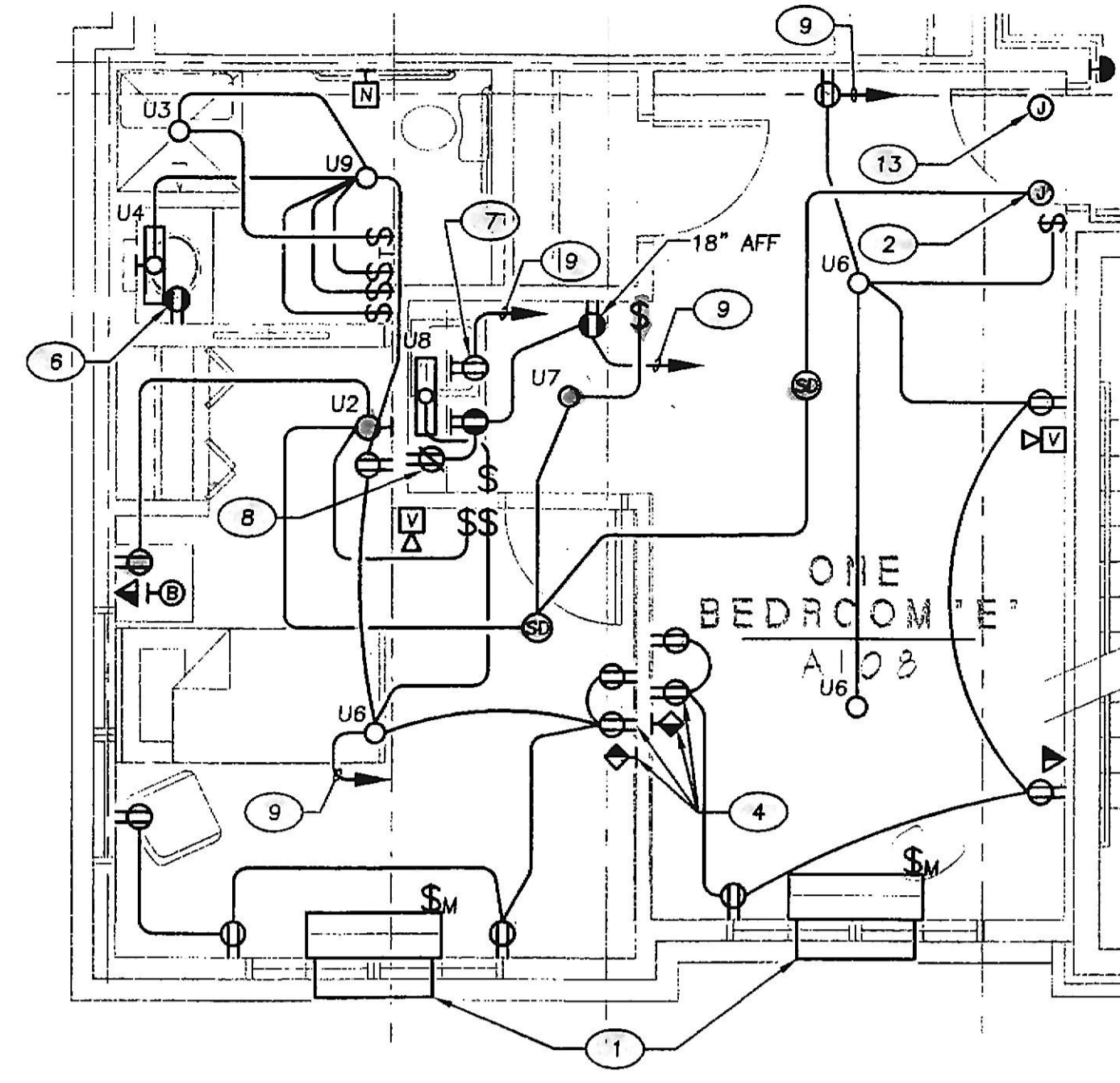


A.L. ONE BEDROOM
SCALE: 1/4" = 1'-0"
0 1' 2' 4' 8'

Circ.
4-REG
1-200V REC
1-EMER.

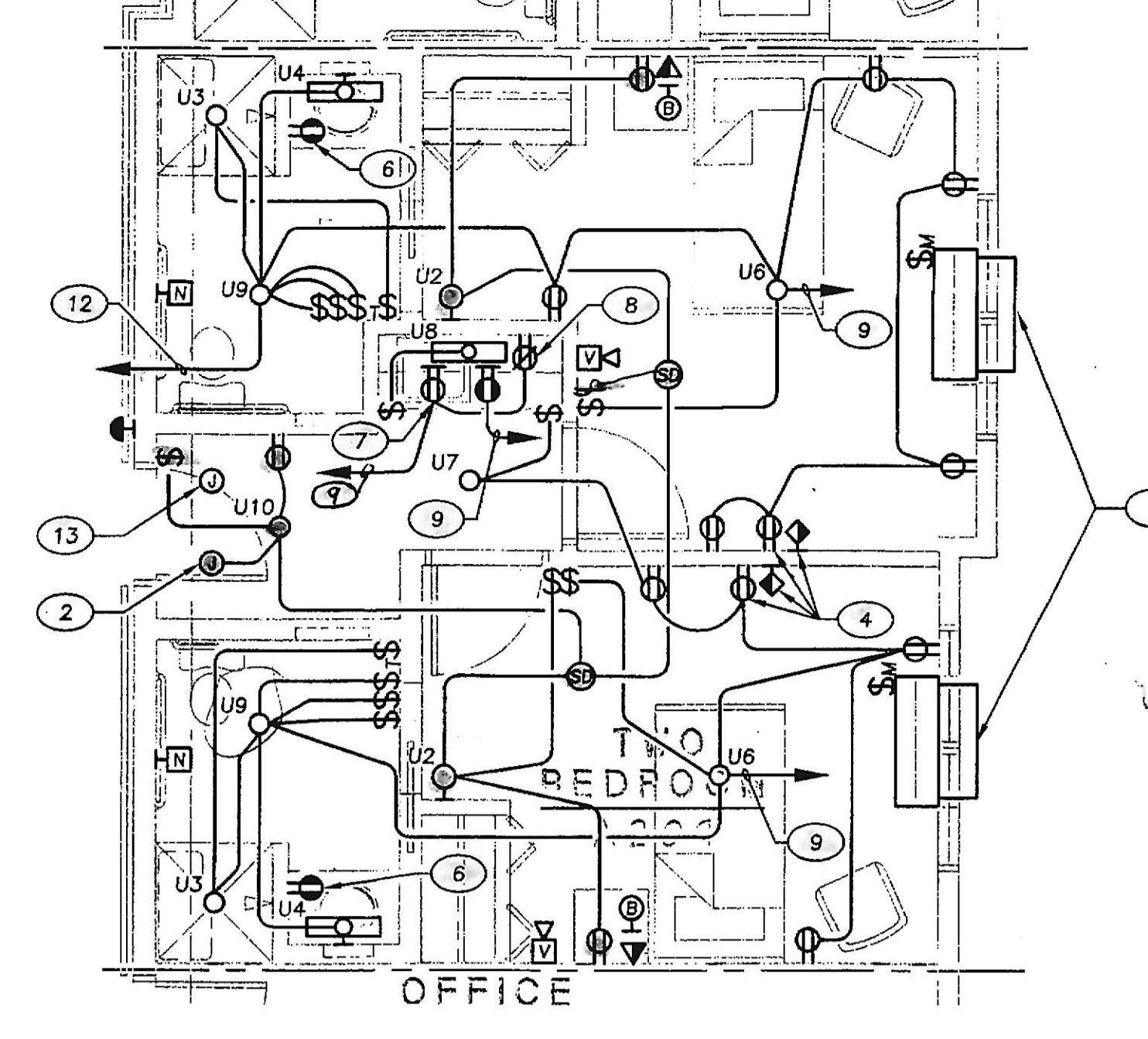
21-Down
1-5-200V
1-4-200V
2-10



A.L. ONE BEDROOM 'E'
SCALE: 1/4" = 1'-0"
0 1' 2' 4' 8'

Circ.
4-REG
1-200V REC
1-EMER.

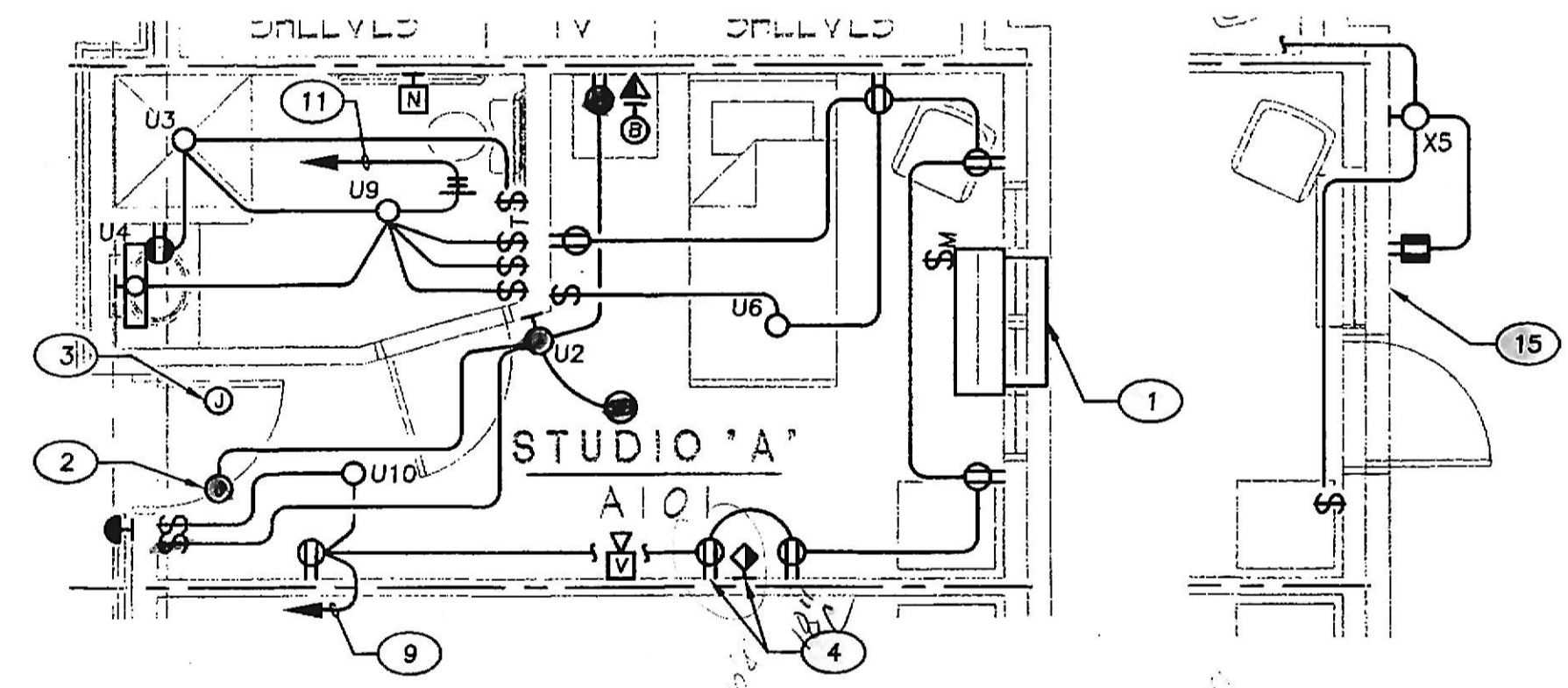
30-Down
1-200V
1-4-200V
2-10



A.L. TWO BEDROOM
SCALE: 1/4" = 1'-0"
0 1' 2' 4' 8'

Circ.
4-REG
1-200V REC
1-EMER.

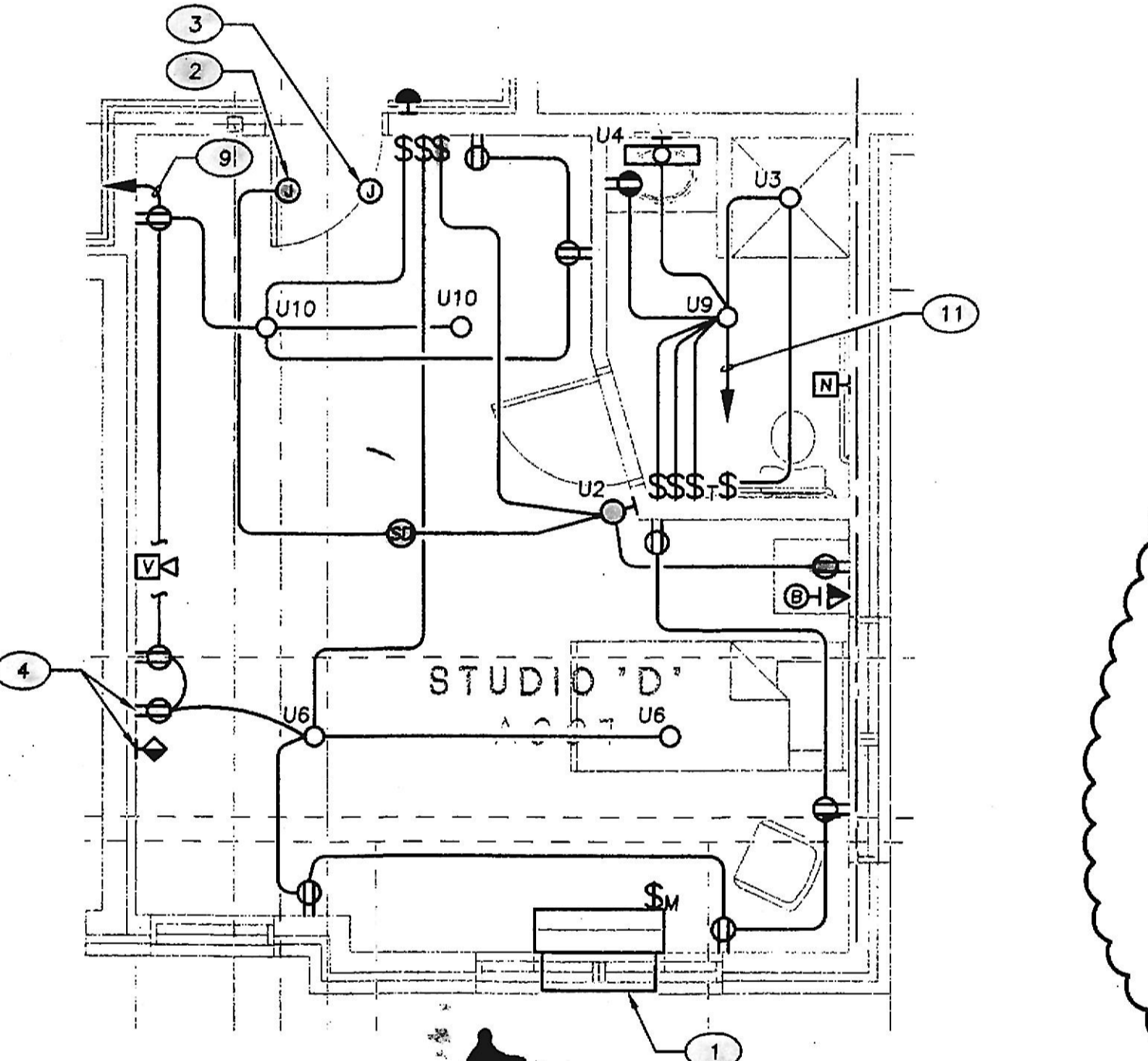
38-Down
1-200V
2-4-200V
2-10



A.L. STUDIO
SCALE: 1/4" = 1'-0"
0 1' 2' 4' 8'

Circ.
2-REG
1-EMER.

17-Down
1-200V
1-4-200V
1-10



A.L. STUDIO 'D'
SCALE: 1/4" = 1'-0"
0 1' 2' 4' 8'

Circ.
2-REG
1-EMER.

17-Down
1-200V
1-4-200V
1-10

PLAN NOTES	
1. RESIDENT ROOM PTAC UNIT. PROVIDE MOTOR RATED DISCONNECT SWITCH. REFER TO 1/8" SCALE PLANS FOR TYPE AND CIRCUIT NUMBER.	11. ONE NORMAL POWER CIRCUIT FOR BATHROOM.
2. CONNECT TO 120 VOLT GENERATOR CIRCUIT WITHIN UNIT - REFER TO 1/8" SCALE PLANS FOR CIRCUIT NUMBERS.	12. NOT USED.
3. CONNECT TO TWO 120 VOLT NORMAL POWER CIRCUITS WITHIN A.L. UNIT - REFER TO 1/8" SCALE PLANS FOR CIRCUIT NUMBERS.	13. CONNECT TO FOUR 120 VOLT NORMAL POWER CIRCUITS WITHIN ASSISTED LIVING UNIT - REFER TO 1/8" SCALE PLANS FOR CIRCUIT NUMBERS.
4. MOUNT RECEPTACLE AND TELEVISION OUTLET AT 66" AFF.	14. NOT USED.
5. NOT USED.	15. THIS SCENARIO ONLY OCCURS AT GROUND FLOOR.
6. CONNECT TO 120 VOLT CIRCUIT AS INDICATED ON 1/8" SCALE PLANES.	16. NOT USED.
7. MOUNT RECEPTACLE IN CABINETS (66" AFF). SERVE MICROWAVE.	
8. RECEPTACLE DESIGNATED FOR REFRIGERATOR.	
9. ONE 120 VOLT NORMAL POWER CIRCUIT.	
10. NOT USED.	

GENERAL NOTES	
1. NOT USED.	9. PROVIDE A SEPARATE 120 VOLT, 20 AMP CIRCUIT TO FEED THE HEATER COMPONENT OF THE TYPE 'U9' FIXTURES WITHIN THE ASSISTED LIVING BATHROOMS.
2. NOT USED.	10. RECEPTACLES WITHIN ASSISTED LIVING UNITS SHALL BE SPACED IN ACCORDANCE WITH NEC 210.52(A)(1)(D).
3. REFER TO 1/8" SCALE PLANS FOR TYPICAL UNIT LOCATIONS.	11. NOT USED.
4. RECEPTACLES CONNECTED TO GENERATOR BRANCH CIRCUITS SHALL BE RED IN COLOR, AND PERMANENTLY LABELED WITH SOURCE PANEL AND CIRCUIT NUMBER.	
5. NOT USED.	
6. ALL AUDIBLE/VISUAL DEVICES LOCATED WITHIN UNITS SHALL BE LOW FREQUENCY SOUNDER TYPE.	
7. INTERCONNECT SMOKE DETECTORS IN UNITS WHERE MORE THAN (1) SMOKE DETECTOR IS REQUIRED, FOR COMMON ALARM WITHIN UNIT.	
8. ALL CIRCUITS IN ASSISTED LIVING UNITS SHALL BE ARC-FAULT CIRCUIT-INTERRUPTER PROTECTED (EXCEPT THOSE EXCLUSIVELY FEEDING BATHROOMS).	

REVISIONS BY
PERMIT COMMENTS
REVISION 2
ADDENDUM #2

Professional Certification
I certify that these documents were prepared or approved by me, and that I am duly licensed Professional Engineer under the laws of the State of Maryland, license number 22792, expiration date August 04, 2020.

SRBR
MEP Consulting Engineers since 1959
757 Frederick Road Suite 100 - Catonsville, Maryland 21228
Phone: 410-865-7282
Web: www.SRBRengineers.com

Lorien Nursing - Elkrige Addition
7615 Washington Blvd
Elkrige, Maryland 21075

TYPICAL UNIT PLANS ELECTRICAL

DATE Dec. 06, 2019
SCALE As Noted
DRAWN
JOB
SHEET

ADDENDUM #2 12/06/2019
SRBR No:18131

E3.2
OF SHEETS