

DRAWING NOTES

1. INSTALL WALL MOUNTED THERMOSTAT CONTROLLING ZONE DAMPER. APPROXIMATE MOUNTING HEIGHT 54" ABOVE FINISHED FLOOR.
2. CONNECT TO EXISTING SUPPLY AIR DUCTWORK AND PROVIDE NEW DUCTWORK WITH DUCTWRAP INSULATION TO MATCH EXISTING.
3. PROVIDE ZONE DAMPER IN SUPPLY AIR DUCTWORK AS SHOWN.
4. PROVIDE NEW DUCTTAP FITTING WITH INTEGRAL VOLUME DAMPER.
5. INSULATED RIGID RUNOUT SHALL BE EQUAL IN SIZE TO FLEX DUCT AND AIR DEVICE NECK SIZE.
6. PROVIDE INSULATED FLEX DUCT RUNOUT TO AIR DEVICE. FLEX DUCT SHALL MATCH EXISTING.
7. PROVIDE SUPPLY/RETURN AIR DEVICE BALANCED TO INDICATED AIRFLOW. REFER TO AIR DEVICE SCHEDULE, SHEET M6, FOR ADDITIONAL INFORMATION.
8. PROVIDE TRANSFER AIR DUCTWORK ABOVE CEILING AS SHOWN.
9. REFER TO INSULATION SCHEDULE, SHEET M6, FOR INSULATION REQUIREMENTS.
10. NEWRELOCATED PENDANT-TYPE SPRINKLER HEAD. SPRINKLER HEADS ARE SHOWN FOR COORDINATION ONLY. SPRINKLER CONTRACTOR SHALL BE FULLY RESPONSIBLE FOR FINAL SPRINKLER SYSTEM DESIGN.
11. PROVIDE 30 GALLON ELECTRIC WATER HEATER EQUAL TO RHEEM MODEL# E6SP30, SINGLE 2KN ELECTRIC ELEMENT, 120V/1Ø. INSTALL ABOVE CEILING AND IN STRICT ACCORDANCE WITH MANUFACTURER'S INSTRUCTIONS. FIELD COORDINATE EXACT LOCATION OF WATER HEATER. REFER TO DETAIL, SHEET M7, FOR ADDITIONAL INFORMATION.
12. PROVIDE ADA COMPLIANT STAINLESS STEEL COUNTERTOP KITCHEN SINK EQUAL TO ELKAY MODEL GECR-2521-R WITH FAUCET EQUAL TO ELKAY MODEL LK-2442. FOR CONNECTIONS TO EQUIPMENT IN THIS AREA REFER TO SANITARY RISER, SHEET M7, AND DOMESTIC WATER DIAGRAM-KITCHENETTE, SHEET M7, FOR ADDITIONAL INFORMATION.
13. PROVIDE ¾ HP GARBAGE DISPOSAL EQUAL TO INSINKERATOR MODEL BADGER 5 120V/1Ø. REFER TO RISER DIAGRAM, SHEET M7, FOR ADDITIONAL INFORMATION.
14. UNLESS OTHERWISE NOTED SANITARY DRAIN PIPING SHALL BE SLOPED AT 1/4" LF.
15. PROVIDE ½" DOMESTIC WATER PIPING AS SHOWN. EXTEND TO NEAREST COLD WATER PIPING AND CONNECT.
16. PROVIDE 1½" VENT PIPING ABOVE CEILING AS SHOWN. EXTEND TO NEAREST EXISTING VENT PIPING/RISER AND CONNECT.
17. PROVIDE 1½" SANITARY IN WALL AS SHOWN. EXTEND IN CEILING OF FLOOR BELOW TO NEAREST EXISTING SANITARY AND CONNECT.
18. PROVIDE PIPE SLEEVE AT WALL PENETRATION. SEAL AROUND SLEEVE AND BETWEEN SLEEVE AND PIPE.
19. PROVIDE BALL TYPE SHUTOFF VALVE.
20. PROVIDE CEILING MOUNTED EXHAUST FAN EQUAL TO GREENHECK MODEL SF250, 120V/1Ø, WITH THERMOSTAT (MOUNTING HEIGHT 54" AFF). FAN SHALL ENERGIZE ON TEMPERATURE RISE ABOVE 80°F (ADJ) AND DE-ENERGIZE WHEN TEMPERATURE FALLS BELOW SETPOINT.
21. IN MOST CASES, EXISTING SUPPLY AIR DIFFUSERS ARE FITTED WITH ROUND TO RECTANGULAR TRANSITION PIECES, WITH ROUND NECK SIZES MATCHING FLEX DUCT SIZES SHOWN ON DEMOLITION DRAWINGS. IN REUSING DIFFUSERS, THE CONTRACTOR SHALL SELECT THE APPROPRIATE SIZE ACCORDING TO THE AIR DEVICE SCHEDULE AND WHERE NECESSARY, REMOVE THE TRANSITION ASSEMBLY AND REPLACE WITH ONE OF ADEQUATE SIZE.
22. PROVIDE ROOF MOUNTED ENERGY RECOVERY VENTILATOR (ERV), WITH FULL ROOF CURB. REFER TO SCHEDULE, SHEET M7, FOR ADDITIONAL INFORMATION.
23. PROVIDE WALL SWITCH WITH INDICATOR LIGHT FOR ON/OFF CONTROL OF ERV. WHEN INDEXED TO "ON" POSITION, ERV SHALL BE ENERGIZED AND ASSOCIATED MODS SHALL GO FULL OPEN. WHEN INDEXED TO "OFF" POSITION, THE REVERSE SHALL OCCUR.

ZONE DAMPER SCHEDULE

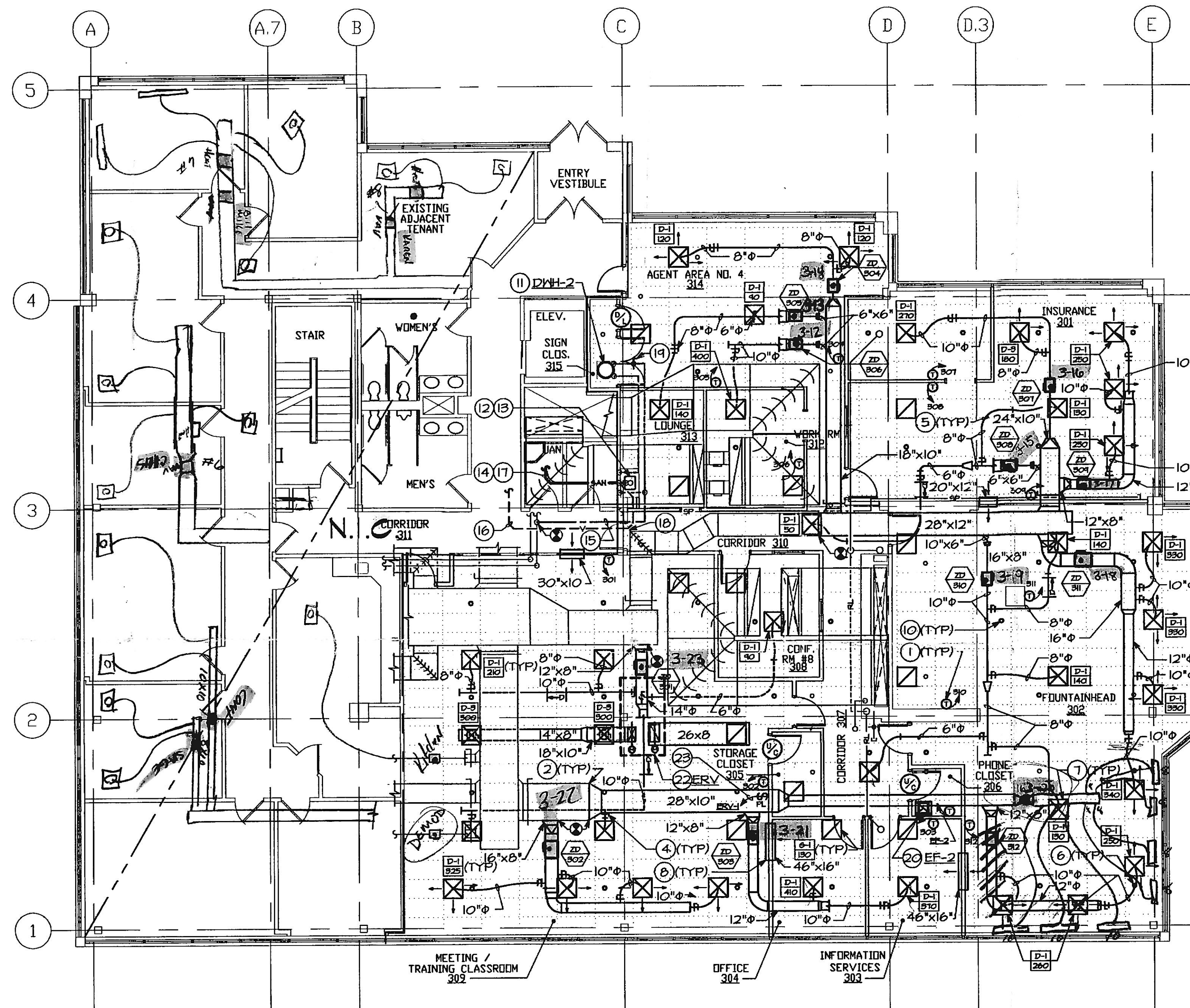
ITEM#	CFM RANGE		INLET SIZE	MIN. INLET STATIC PRESSURE	MAX. N.C.	MODEL#
	NOMINAL	MAX.				
ZD-301	850	930	14	0.3	25	CARRIER 33CS ZD
ZD-302	1130	1300	16	0.3	25	CARRIER 33CS ZD
ZD-303	630	780	12	0.3	25	CARRIER 33CS ZD
ZD-304	280	360	8	0.3	25	CARRIER 33CS ZD
ZD-305	160	230	6	0.3	25	CARRIER 33CS ZD
ZD-306	280	400	8	0.3	25	CARRIER 33CS ZD
ZD-307	440	450	10	0.3	25	CARRIER 33CS ZD
ZD-308	160	230	6	0.3	25	CARRIER 33CS ZD
ZD-309	630	750	12	0.3	25	CARRIER 33CS ZD
ZD-310	440	460	10	0.3	25	CARRIER 33CS ZD
ZD-311	1130	1330	16	0.3	25	CARRIER 33CS ZD
ZD-312	630	710	12	0.3	25	CARRIER 33CS ZD

NOTES:

1. ZONE DAMPER CONTROLLERS SHALL BE TAC I/NET SEVEN MODEL MR VAV AX TO MATCH AND BE FULLY COMPATIBLE WITH EXISTING BUILDING DDC SYSTEM. ZONE DAMPER CONTROLLERS SHALL BE PROVIDED AND FIELD INSTALLED BY OTHERS.
2. EACH ZONE DAMPER CONTROLLER SHALL BE PROVIDED WITH A COMPANION WALL-MOUNTED THERMOSTAT EQUAL TO TAC I/NET SEVEN I/STAT MOUNTED WHERE SHOWN ON PLANS. THERMOSTATS SHALL BE INSTALLED BY CONTRACTOR, WIRED BY OTHERS.



SCALE: 1/8" = 1'-0"



⑨② MECHANICAL PLAN THIRD FLOOR
SCALE: 1/8" = 1'-0"

THE CONTRACTOR SHALL SEPARATELY PRICE ALL WORK ASSOCIATED WITH THE INSTALLATION OF NEW SUPPLY AIR MAIN DUCTWORK AND ZONE DAMPERS ON THIS FLOOR.