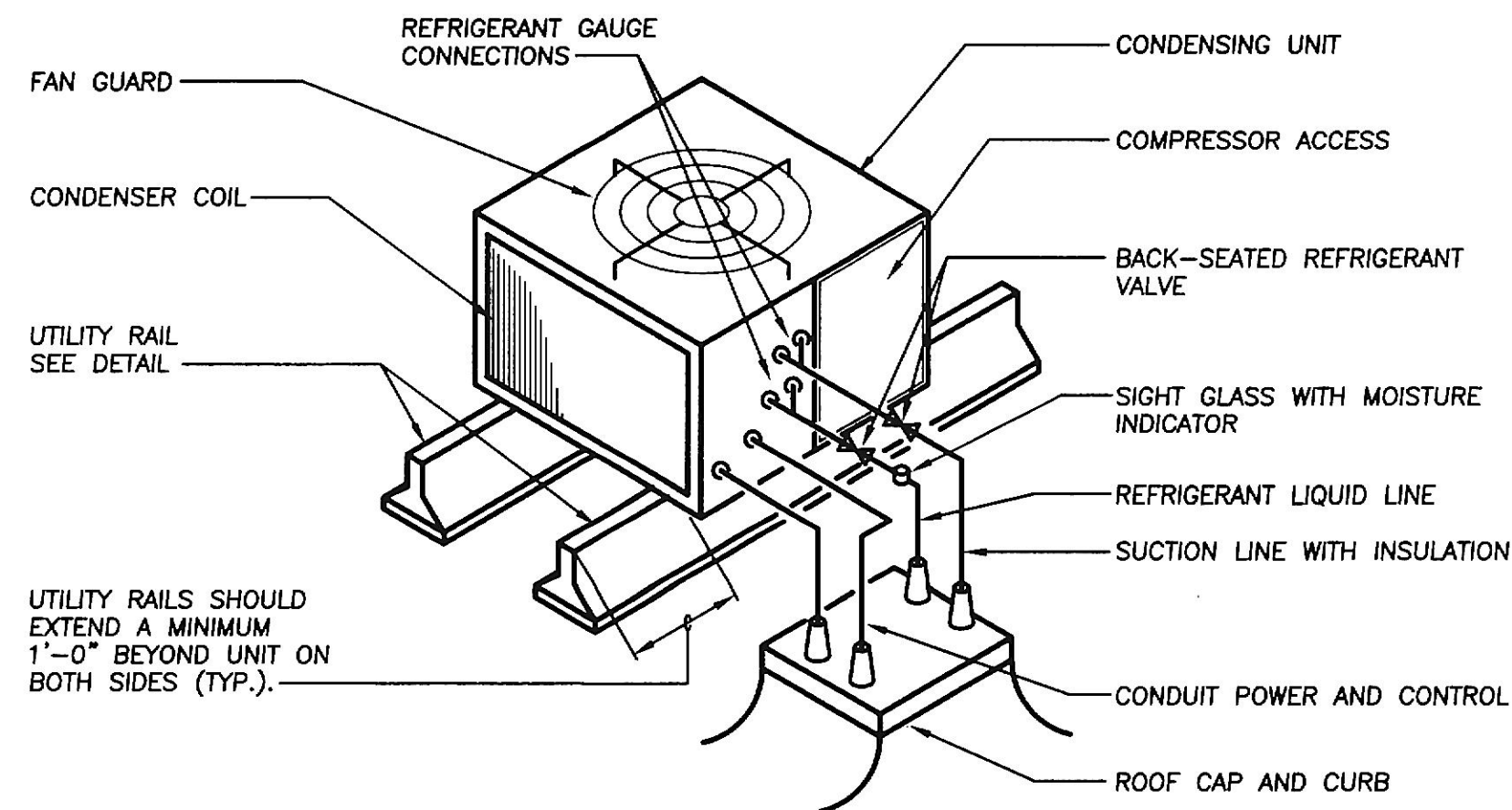
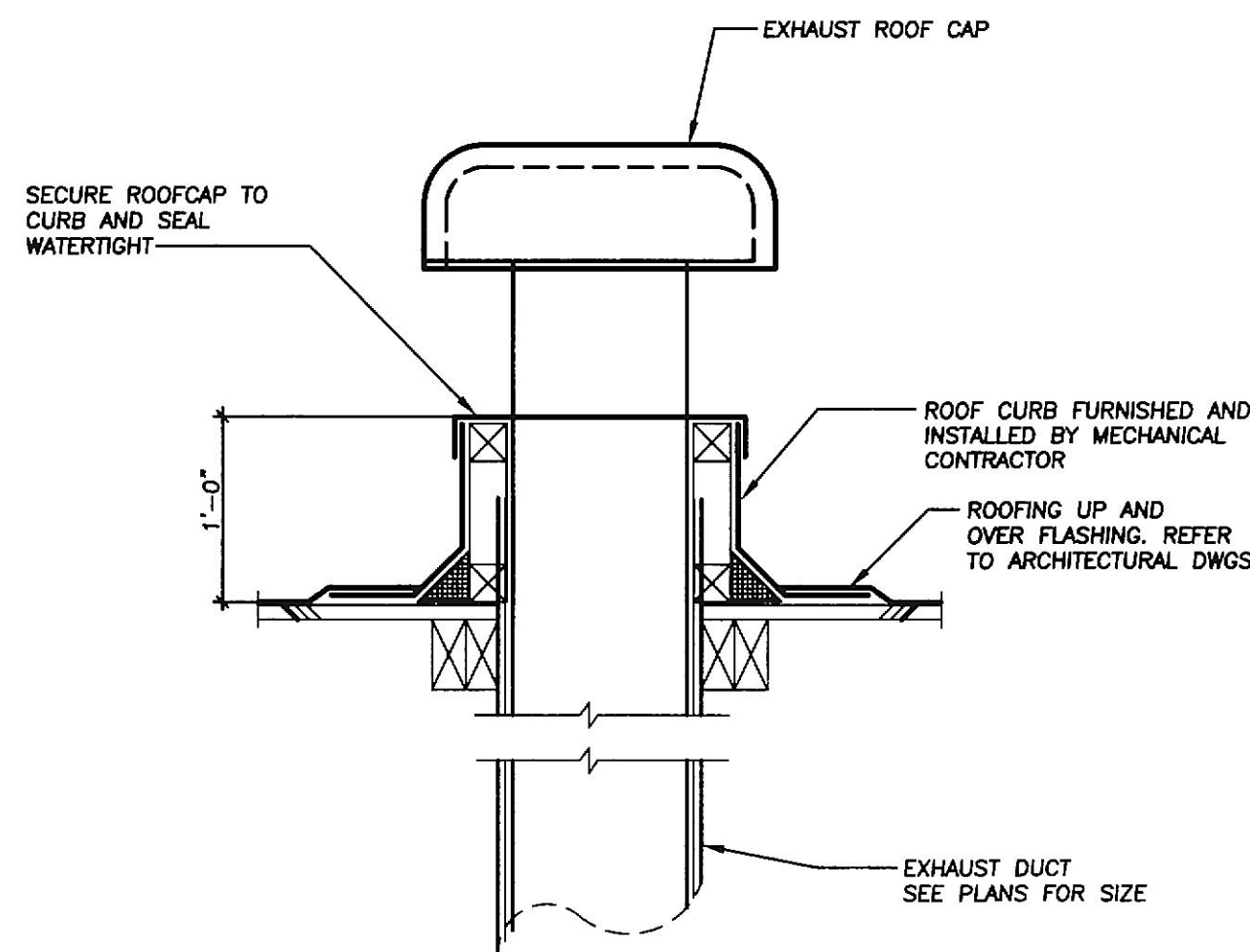


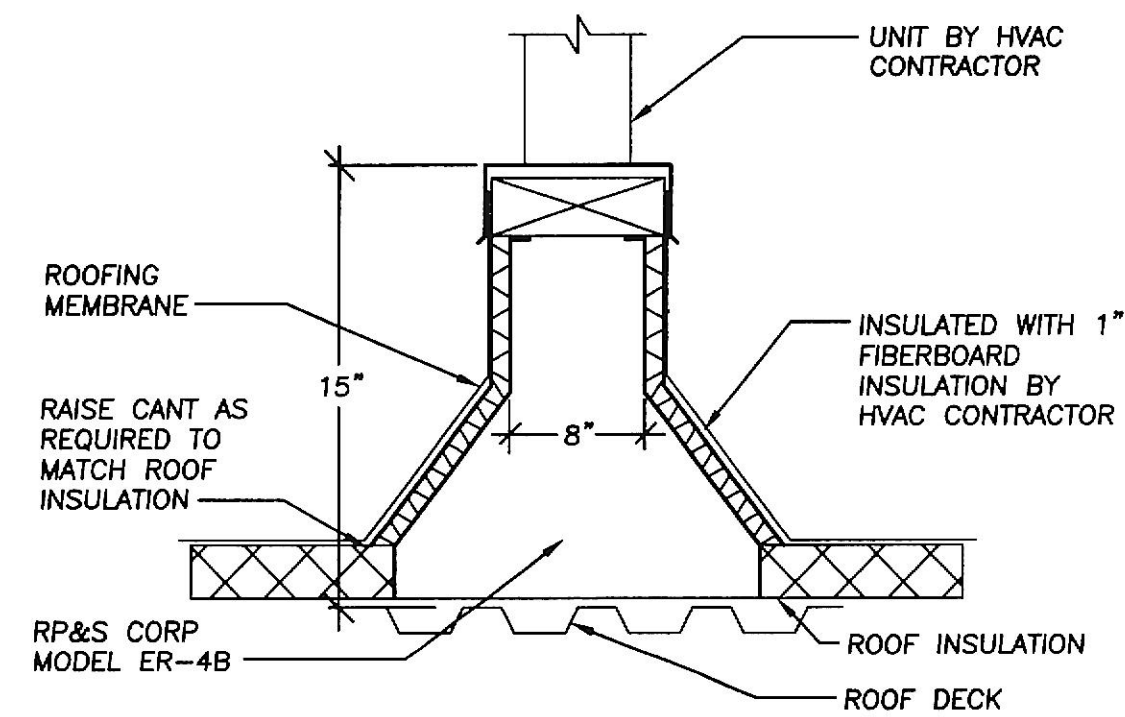
HELIUM EXHAUST VENT DETAIL
NO SCALE



OUTDOOR SPLIT SYTEM UNIT MOUNTING DETAIL
NO SCALE

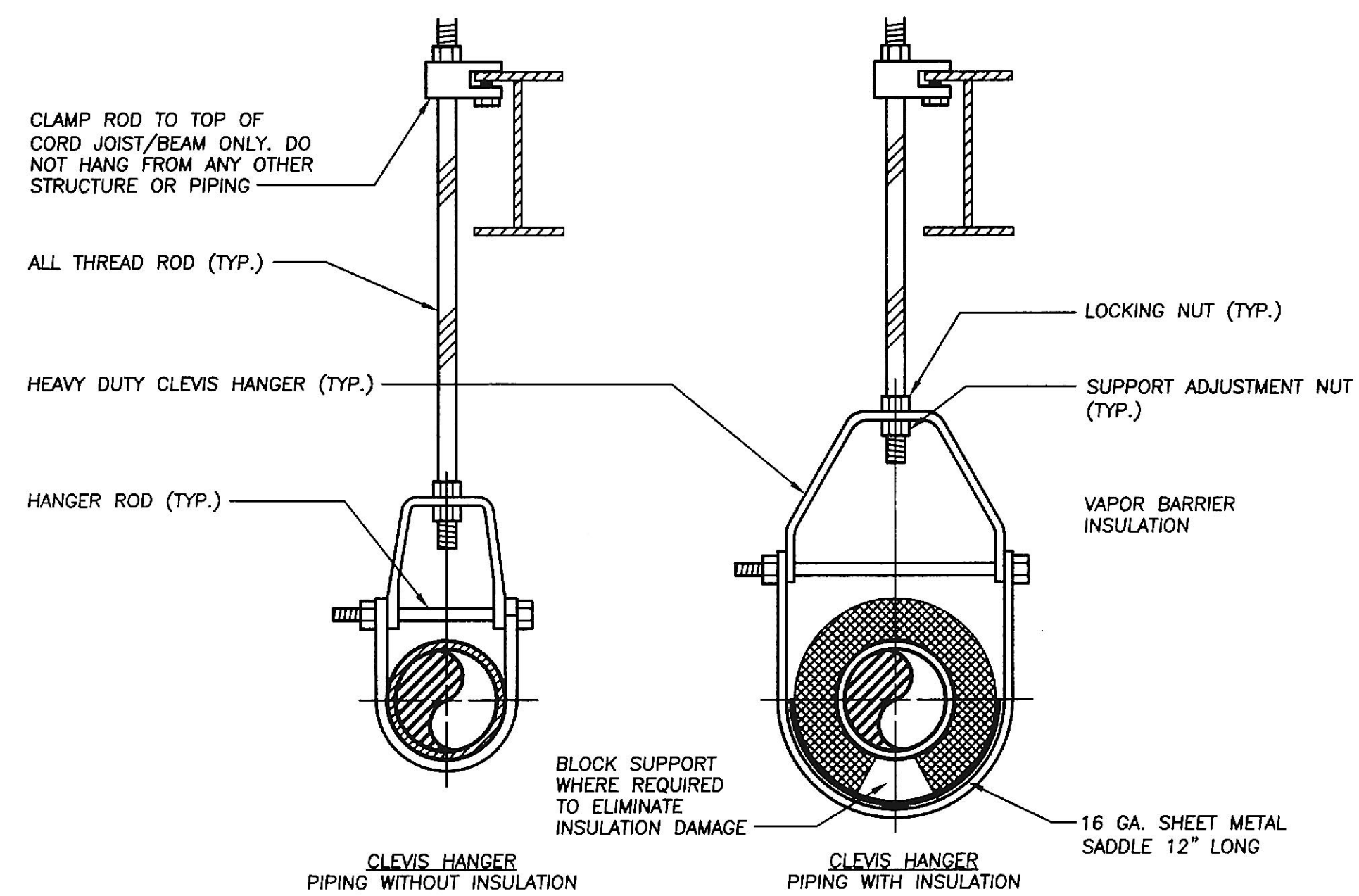


EXHAUST DUCT DISCHARGE AT ROOF
NO SCALE



ROOF UTILITY CURB RAIL DETAIL
NO SCALE

NOTE(S):
1. USE 8" EQUIPMENT RAILS FOR ALL ROOF MOUNTED EQUIPMENT.



PIPE SUPPORT DETAIL
NO SCALE

PROGRESS ISSUE 11-11-2014

SRBR

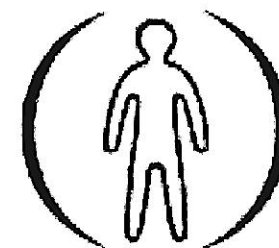
MEP Consulting Engineers since 1959

757 Frederick Road Suite 300 - Catonsville, Maryland 21228
Phone: 410 869-7282 Web: www.SRBRengineers.com

SRBR No: 14128



HOFMANN ASSOCIATES, INC.
606 Baltimore Ave.
Suite 102
Towson, Maryland 21204
410.828.9090
fax 410.828.4433



CHESAPEAKE MEDICAL IMAGING

PROJECT NAME:
CHESAPEAKE MEDICAL

1312 BELLONA AVE., SUITE 102
LUTHERVILLE, MD. 21093

DEVELOPER / OWNER:
CHESAPEAKE MEDICAL IMAGING

ISSUE DATE

THE CONCEPTS, IDEAS, DESIGNS AND IMAGES ARE INTENDED ONLY FOR THE PROJECT SPECIFIED ON THIS SHEET AND ARE THE SOLE PROPERTY OF HOFMANN ASSOCIATES, INC. THEY ARE NOT TO BE REPRODUCED OR USED BY OTHERS WITHOUT WRITTEN PERMISSION BY HOFMANN ASSOCIATES, INC.

MECHANICAL DETAILS

M202

project no. : 14-080