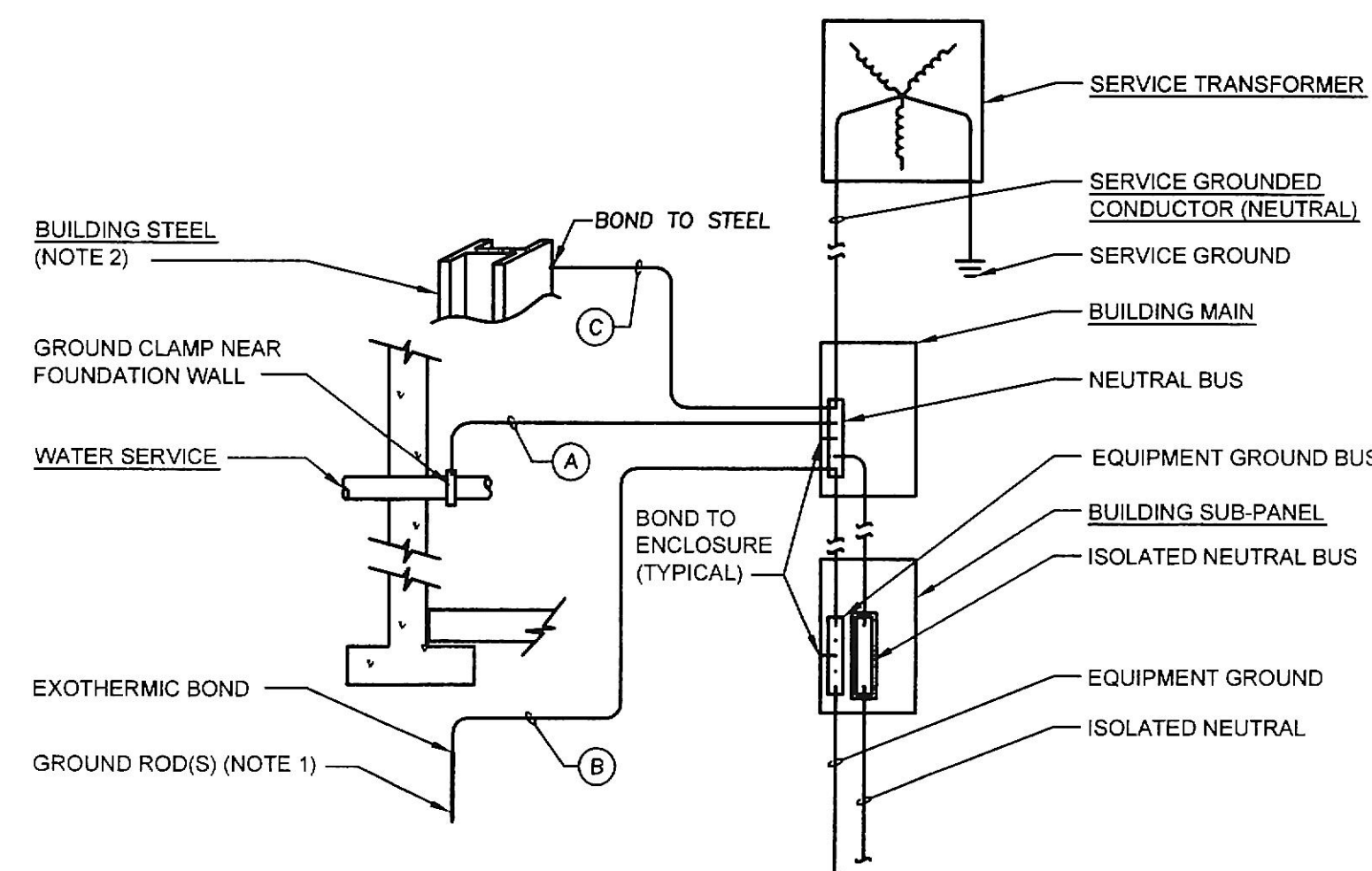


POWER DISTRIBUTION DIAGRAM

NO SCALE
SEE DRAWING E200 FOR CONTINUATION OF POWER CIRCUITS TO
MRI AND PET EQUIPMENT. SEE DRAWING 200 FOR 208-VOLT
POWER DISTRIBUTION.



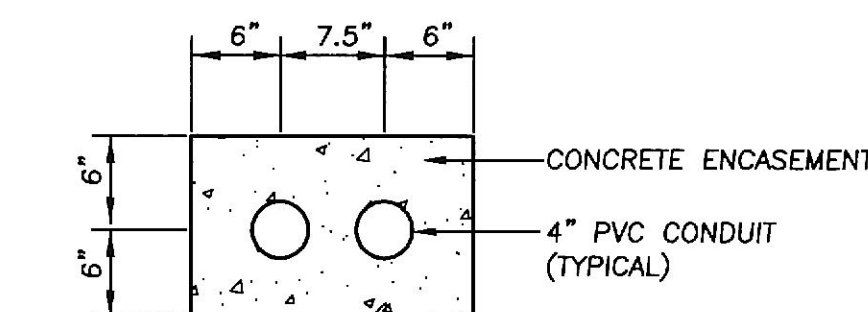
MAIN GROUNDING ELECTRODE DETAIL

NO SCALE

GROUNDING NOTES:

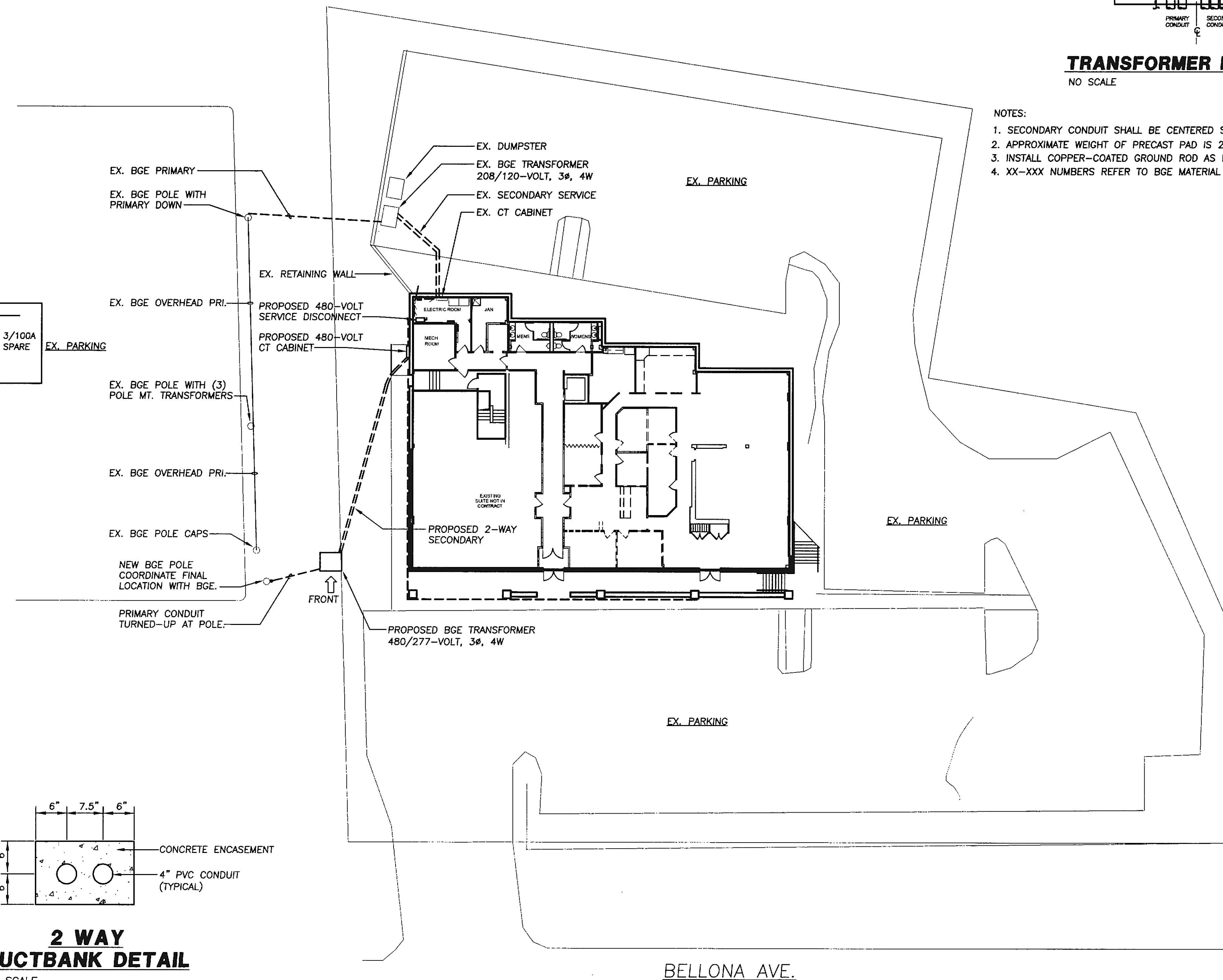
- ADDITIONAL RODS SHALL BE ADDED AS NEEDED FOR TOTAL RESISTANCE OF
25 OHMS OR LESS.

GROUND CONDUCTOR TABLE			
SERVICE SIZE	A	C	D
COPPER WIRE SIZE	#3/0	#6	#3/0



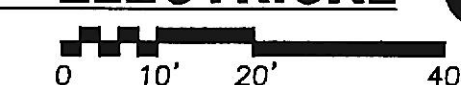
2 WAY DUCTBANK DETAIL

NO SCALE



SITE PLAN - ELECTRICAL

SCALE: 1" = 20'-0"

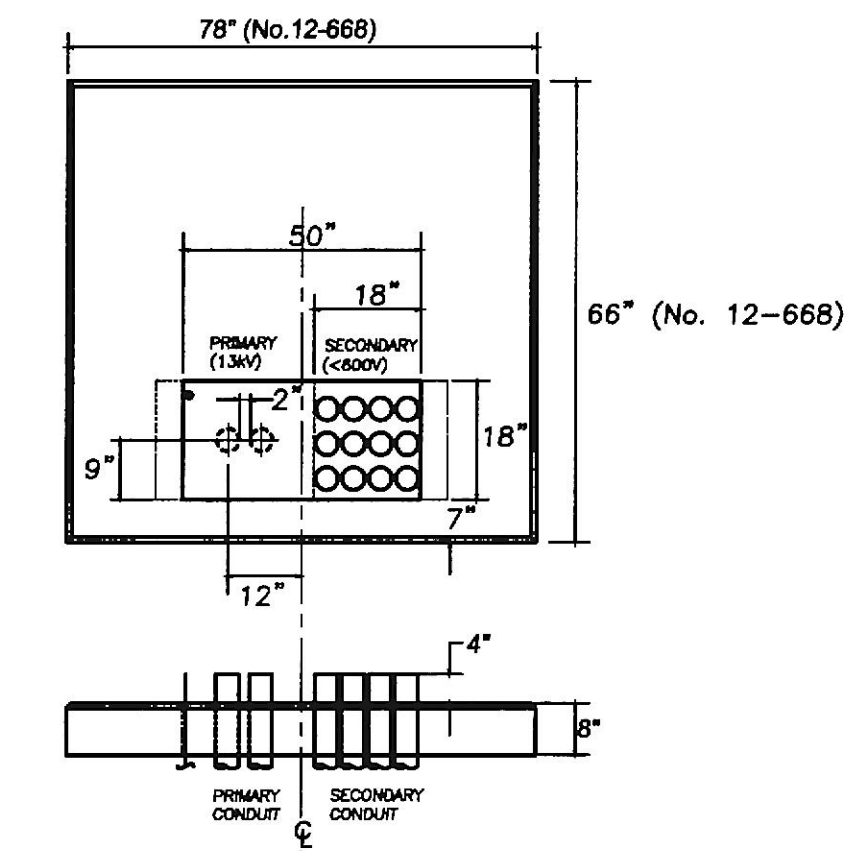


TRANSFORMER PAD DETAIL

NO SCALE

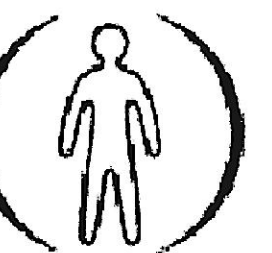
NOTES:

- SECONDARY CONDUIT SHALL BE CENTERED SYMMETRICALLY WITHIN 18" x 18" AREA.
- APPROXIMATE WEIGHT OF PRECAST PAD IS 2200 POUNDS. (No. 12-668).
- INSTALL COPPER-COATED GROUND ROD AS REQUIRED TO AVOID INCOMING CONDUITS.
- XX-XXX NUMBERS REFER TO BGE MATERIAL NUMBERS.



HOFMANN
ASSOCIATES, INC.

606 Baltimore Ave.
Suite 102
Towson, Maryland 21204
410.828.9090
fax 410.828.4433



CHESAPEAKE
MEDICAL IMAGING

PROJECT NAME:
CHESAPEAKE MEDICAL

1312 BELLONA AVE., SUITE 102
LUTHERVILLE, MD 21093

DEVELOPER / OWNER:
CHESAPEAKE MEDICAL IMAGING

ISSUE DATE

THE CONCEPTS, IDEAS, DESIGNS
AND IMAGES ARE INTENDED ONLY
FOR THE PROJECT SPECIFIED ON
THIS SHEET AND ARE THE SOLE
PROPERTY OF HOFMANN
ASSOCIATES, INC. THEY ARE NOT TO
BE REPRODUCED OR USED BY
OTHERS WITHOUT WRITTEN
PERMISSION BY HOFMANN
ASSOCIATES, INC.

SITE &
SERVICE PLAN
ELECTRICAL

E100

PROGRESS ISSUE 11-11-2014

SRBR

MEP Consulting Engineers since 1959

737 Frederick Road, Suite 300 - Catonsville, Maryland 21228
Phone: 410.869.7282 Web: www.SRBRengineers.com

SRBR No: 14128

project no.: 14-080

BGE WMS #2434970