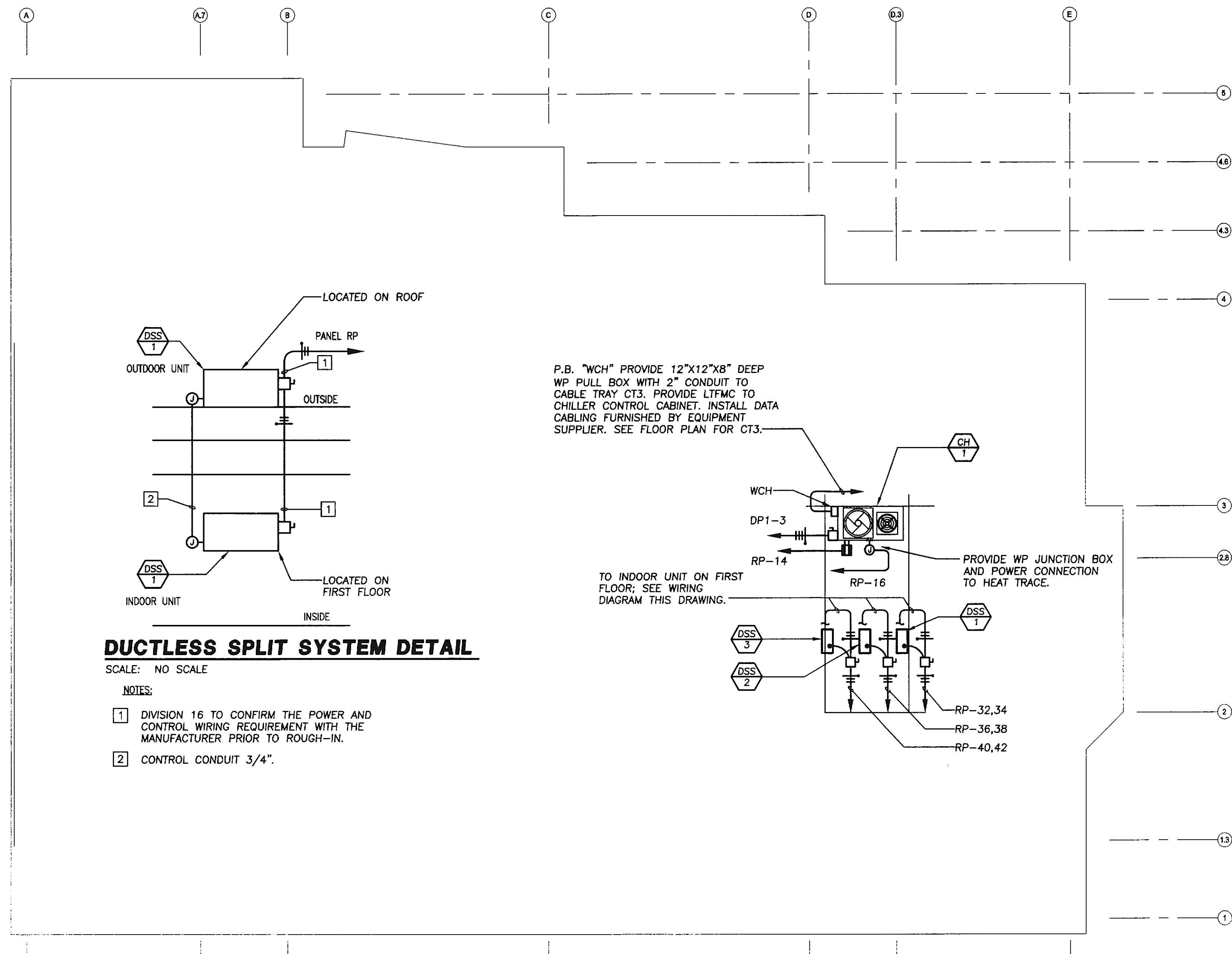


### PLAN NOTES:

- 12"X12" GANTRY PULL BOX "B" FURNISHED BY EQUIPMENT VENDOR. INSTALL PULL BOX BELOW SLAB. PROVIDE 6" CORE DRILL TO PULL BOX CENTER OF BOX. SEE FLOOR PLAN FOR CONDUITS TO PULL BOX.
- LINE CONNECTION BOX "LCB" FURNISHED BY EQUIPMENT VENDOR. INSTALL PULL BOX ON FLOOR. SEE FLOOR PLAN FOR CONDUITS TO PULL BOX.
- ACS/PRS PULL BOX. PROVIDE 18" X 18" X 4" DEEP RECESSED WALL PULL BOX WITH SCREW ON COVER PLATE. SEE FLOOR PLAN FOR CONDUITS TO PULL BOX.
- ICS/IRS/UPS PULL BOX. PROVIDE 18" X 18" X 4" DEEP RECESSED WALL PULL BOX WITH SCREW ON COVER PLATE. PROVIDE 3" BUSHED OPENING IN THE COVER. SEE FLOOR PLAN FOR CONDUITS TO PULL BOX.
- PROVIDE 2" CONDUIT TO CHILLER PULL BOX "WCH" LOCATION ON ROOF.
- PROVIDE RECESSED WALL 10" X 3" VERTICAL DUCT IN FROM FLOOR INTO CEILING SPACE WITH SWEEP EDGE ELBOW AND CABINET CONNECTOR. PROVIDE 18"X18"X12" DEEP PULL BOX IN CEILING. PROVIDE (2) 2-1/2" AND (1) 1-1/2" CONDUITS TO CABLE TRAY CT3. PROVIDE (1) 3" DIAMETER OPENING AT 5" A.F.F. PROVIDE ONE 4"X4" OPENING AT A HEIGHT TO BE DETERMINE IN THE FIELD.



### ROOF PLAN - ELECTRICAL

SCALE: 1/8" = 1'-0"

0 2' 4' 8' 16'

PROGRESS ISSUE 11-11-2014

**SRBR**

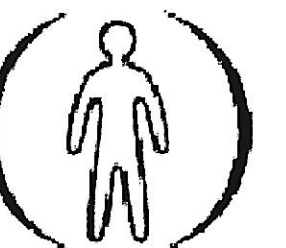
MEP Consulting Engineers since 1959

757 Frederick Road Suite 300 - Catonsville, Maryland 21228  
Phone: 410 869-7282 Web: www.SRBRengineers.com

SRBR No: 14128



**HOFMANN  
ASSOCIATES, INC.**  
606 Baltimore Ave.  
Suite 102  
Towson, Maryland 21204  
410.828.9090  
fax 410.828.4433



**CHESAPEAKE  
MEDICAL IMAGING**

PROJECT NAME:  
**CHESAPEAKE MEDICAL**

1312 BELLONA AVE., SUITE 102  
LUTHERVILLE, MD. 21093

DEVELOPER / OWNER:  
**CHESAPEAKE MEDICAL IMAGING**

ISSUE DATE

THE CONCEPTS, IDEAS, DESIGNS AND IMAGES ARE INTENDED ONLY FOR THE PROJECT SPECIFIED ON THIS SHEET AND ARE THE SOLE PROPERTY OF HOFMANN ASSOCIATES, INC. THEY ARE NOT TO BE REPRODUCED OR USED BY OTHERS WITHOUT WRITTEN PERMISSION BY HOFMANN ASSOCIATES, INC.

**ROOF PLAN  
ELECTRICAL**

**E103**

project no.: 14-080