

SCALE

AS SHOWN

DATE

6/14/02

DESIGNED BY

DJY

DRAWN BY

DJY

CHK. BY

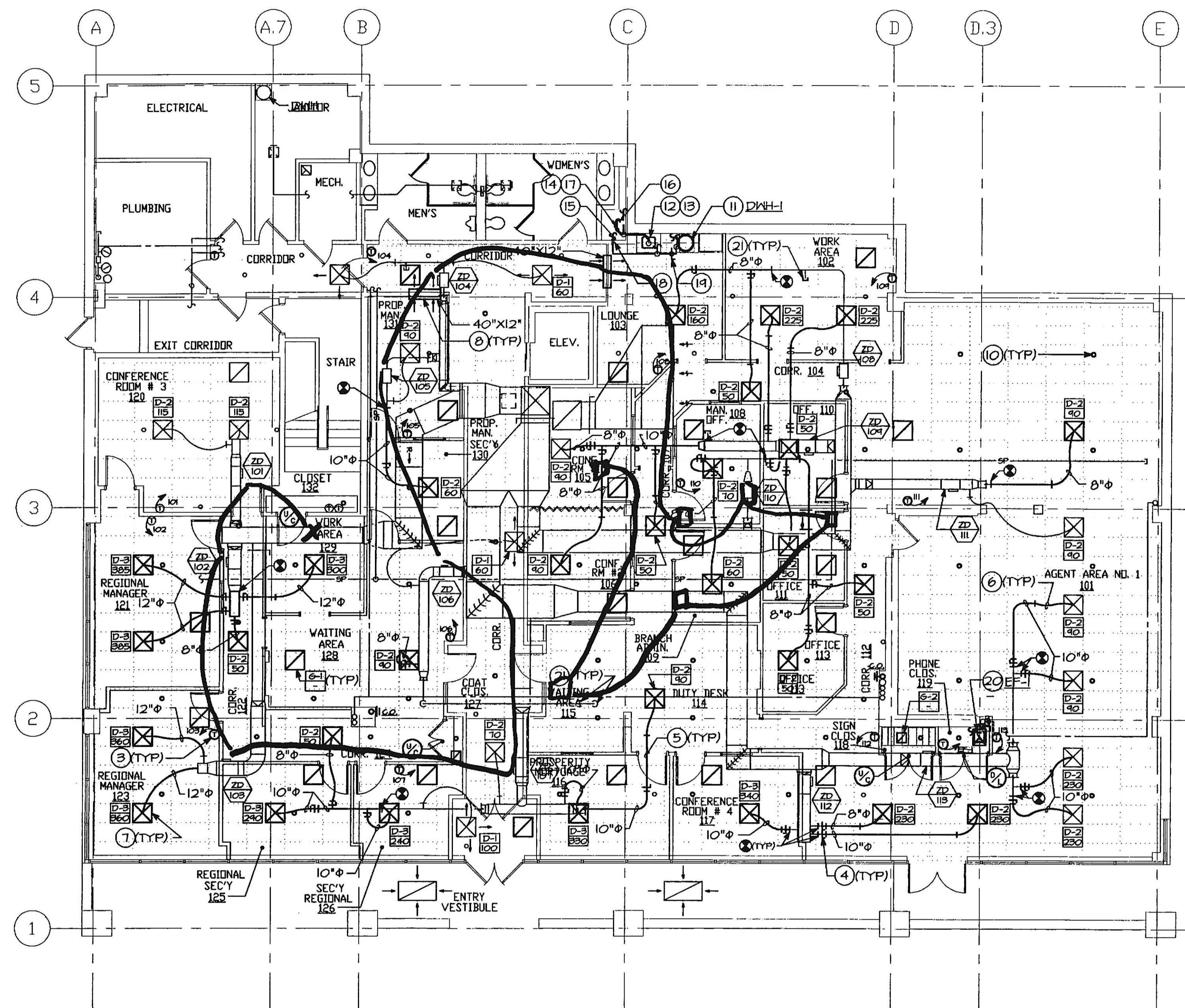
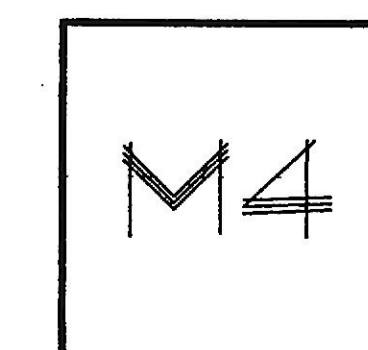
MCM

PROJECT #

02020A

REVISIONS

AUTOCAD FILE:



123 MECHANICAL PLAN FIRST FLOOR
SCALE: 1/8" = 1'-0"



DRAWING NOTES

- 1 TO THE GREATEST EXTENT POSSIBLE CONTRACTOR SHALL REUSE EXISTING AIR DEVICES IN NEW LOCATIONS SHOWN. COORDINATE SIZES ACCORDING TO DIFFUSER AND GRILLE SCHEDULE. CLEAN ALL AIR DEVICES PRIOR TO REUSE.
- 2 IN MOST CASES, EXISTING SUPPLY AIR DIFFUSERS ARE FITTED WITH ROUND TO RECTANGULAR TRANSITION PIECES, WITH ROUND NECK SIZES MATCHING FLEX DUCT SIZES SHOWN ON DEMOLITION DRAWINGS. IN REUSING DIFFUSERS, THE CONTRACTOR SHALL SELECT THE APPROPRIATE SIZE ACCORDING TO THE AIR DEVICE SCHEDULE AND WHERE NECESSARY, REMOVE THE TRANSITION ASSEMBLY AND REPLACE WITH ONE OF ADEQUATE SIZE.
- 3 PROVIDE WALL MOUNTED THERMOSTAT CONTROLLING (ZD) ZONE DAMPER. APPROXIMATE MOUNTING HEIGHT 54" ABOVE FINISHED FLOOR.
- 4 PROVIDE NEW DUCTTAP FITTING WITH INTEGRAL VOLUME DAMPER.
- 5 INSULATED RIGID RUNOUT SHALL BE EQUAL IN SIZE TO FLEX DUCT AND AIR DEVICE NECK SIZE.
- 6 PROVIDE INSULATED FLEX DUCT RUNOUT TO AIR DEVICE. FLEX DUCT SHALL MATCH EXISTING.
- 7 PROVIDE SUPPLY/RETURN AIR DEVICE BALANCED TO INDICATED AIRFLOW. REFER TO AIR DEVICE SCHEDULE, SHEET M8, FOR ADDITIONAL INFORMATION.
- 8 PROVIDE TRANSFER AIR DUCTWORK ABOVE CEILING AS SHOWN.
- 9 REFER TO INSULATION SCHEDULE, SHEET M8, FOR INSULATION REQUIREMENTS.
- 10 NEW/RELOCATED PENDANT-TYPE SPRINKLER HEAD. SPRINKLER HEADS ARE SHOWN FOR COORDINATION ONLY. SPRINKLER CONTRACTOR SHALL BE FULLY RESPONSIBLE FOR FINAL SPRINKLER SYSTEM DESIGN.
- 11 PROVIDE 30 GALLON ELECTRIC WATER HEATER EQUAL TO RHEEM MODEL# E65F30, SINGLE 2KW ELECTRIC ELEMENT, 120V/1Ø. INSTALL ABOVE CEILING AND IN STRICT ACCORDANCE WITH MANUFACTURER'S INSTRUCTIONS. FIELD COORDINATE EXACT LOCATION OF WATER HEATER AND PIPE SO AS NOT TO INFRINGE ON ADA REQUIRED KNEE SPACE. REFER TO DETAIL, SHEET M1, FOR ADDITIONAL INFORMATION.
- 12 PROVIDE ADA COMPLIANT STAINLESS STEEL COUNTERTOP KITCHEN SINK EQUAL TO ELKAY MODEL GEGR-2521-R WITH FAUCET EQUAL TO ELKAY MODEL LK-2442. FOR CONNECTIONS TO EQUIPMENT IN THIS AREA REFER TO SANITARY RISER, SHEET M8, AND DOMESTIC WATER DIAGRAM-KITCHENETTE, SHEET M1, FOR ADDITIONAL INFORMATION.
- 13 PROVIDE 3/4 HP GARBAGE DISPOSAL EQUAL TO INSINKERATOR MODEL BADGER 5 120V/1Ø. REFER TO RISER DIAGRAM, SHEET M1, FOR ADDITIONAL INFORMATION.
- 14 UNLESS OTHERWISE NOTED SANITARY DRAIN PIPING SHALL BE SLOPED AT 1/4"LF.
- 15 PROVIDE 1/2" DOMESTIC WATER PIPING AS SHOWN. EXTEND TO NEAREST COLD WATER PIPING AND CONNECT.
- 16 PROVIDE 1/4" VENT PIPING ABOVE CEILING AS SHOWN. EXTEND TO NEAREST EXISTING VENT PIPING/RISER AND CONNECT.
- 17 PROVIDE 2" SANITARY IN WALL AS SHOWN. EXTEND TO NEAREST EXISTING SANITARY AND CONNECT.
- 18 PROVIDE PIPE SLEEVE AT WALL PENETRATION. SEAL AROUND SLEEVE AND BETWEEN SLEEVE AND PIPE.
- 19 PROVIDE BALL TYPE SHUTOFF VALVE.
- 20 PROVIDE CEILING MOUNTED EXHAUST FAN EQUAL TO GREENHECK MODEL SP250, 120V/1Ø, WITH THERMOSTAT (MOUNTING HEIGHT 54" AFF). FAN SHALL ENERGIZE ON TEMPERATURE RISE ABOVE 80°F (ADJ) AND DE-ENERGIZE WHEN TEMPERATURE FALLS BELOW SETPOINT.
- 21 PROVIDE DUCT CAP AND SEAL AIR TIGHT.