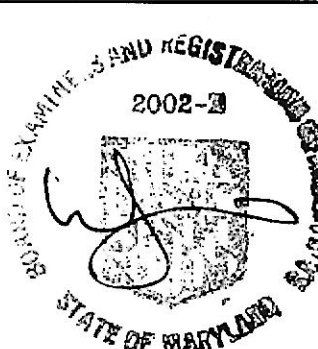
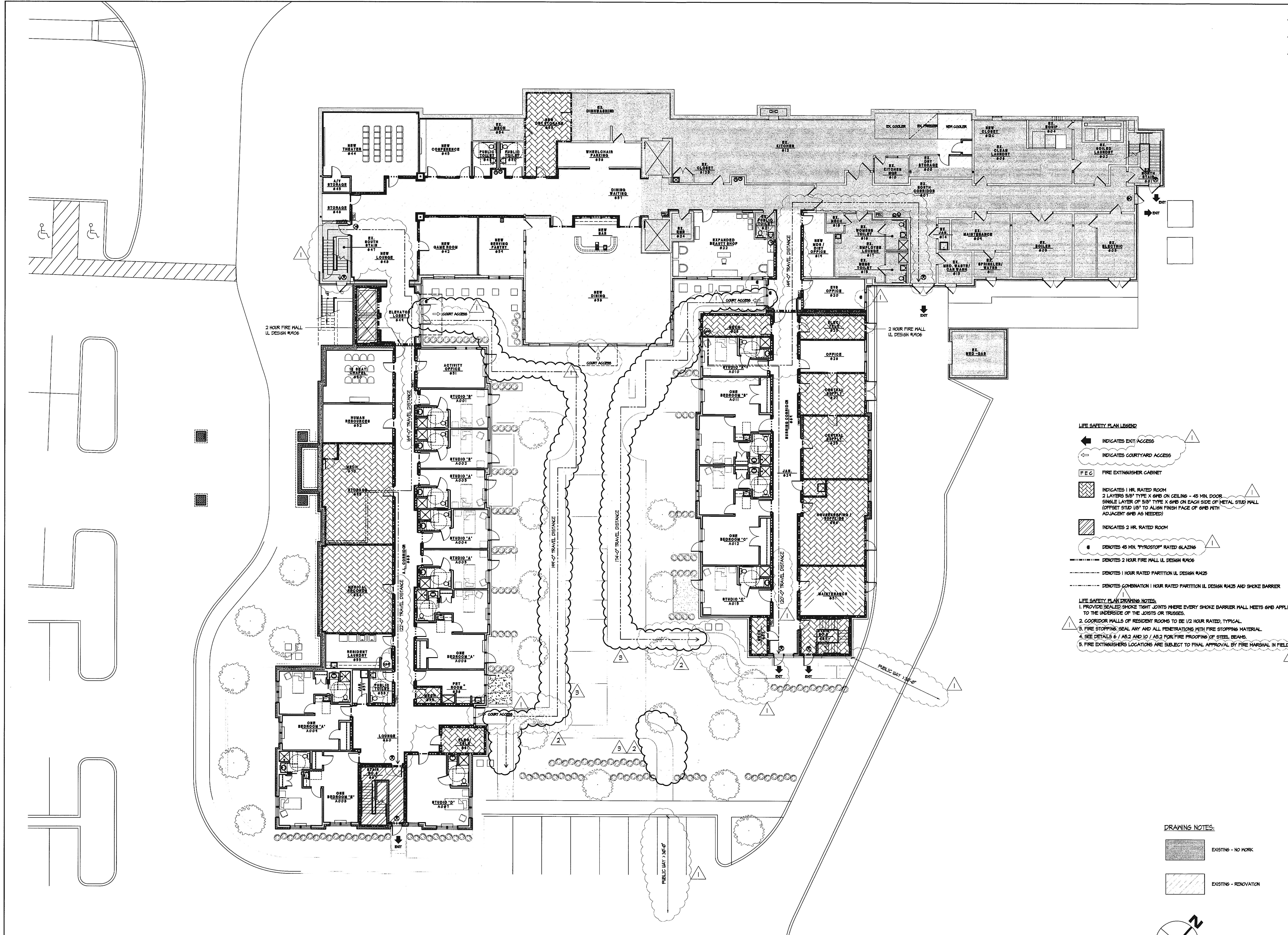


3	REVISIONS	BY
1	10M PERM CLARIFICATION	JLS
2	10M PERM CLARIFICATION	JLS
1	10M PERM REVISION COMMENTS	JLS

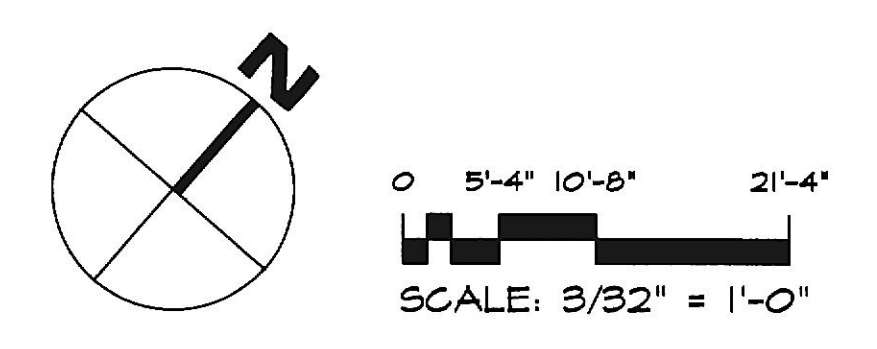


Professional Certification  
I certify that these documents were prepared or approved by me, and that I am duly licensed architect under the laws of the State of Maryland, license number 2002 A, expiration date February 25, 2020.



- LIFE SAFETY PLAN LEGEND**
- ← INDICATES EXIT ACCESS
  - ⇌ INDICATES COURTYARD ACCESS
  - FE C FIRE EXTINGUISHER CABINET
  - INDICATES 1 HR. RATED ROOM  
2 LAYERS 5/8" TYPE X GNB ON CEILING - 45 MIN. DOOR  
SINGLE LAYER OF 5/8" TYPE X GNB ON EACH SIDE OF METAL STUD MALL  
(OFFSET STUD 1/8" TO ALIGN FINISH FACE OF GNB WITH ADJACENT GNB AS NEEDED)
  - INDICATES 2 HR. RATED ROOM
  - 6 DENOTES 45 MIN. "PYROSTOP" RATED GLAZING
  - DENOTES 2 HOUR FIRE MALL UL DESIGN #406
  - DENOTES 1 HOUR RATED PARTITION UL DESIGN #425
  - DENOTES COMBINATION 1 HOUR RATED PARTITION UL DESIGN #425 AND SMOKE BARRIER
- LIFE SAFETY PLAN DRAWING NOTES:**
1. PROVIDE SEALED SMOKE TIGHT JOINTS WHERE EVERY SMOKE BARRIER MALL MEETS GNB APPLIED TO THE UNDERSIDE OF THE JOISTS OR TRUSSES.
  2. CORRIDOR MALLS OF RESIDENT ROOMS TO BE 1/2 HOUR RATED, TYPICAL.
  3. FIRE STOPPING SEAL ANY AND ALL PENETRATIONS WITH FIRE STOPPING MATERIAL.
  4. SEE DETAILS 6 / AS.2 AND 10 / AS.2 FOR FIRE PROOFING OF STEEL BEAMS.
  5. FIRE EXTINGUISHERS LOCATIONS ARE SUBJECT TO FINAL APPROVAL BY FIRE MARSHAL IN FIELD.

- DRAWING NOTES:**
- EXISTING - NO WORK
  - EXISTING - RENOVATION



**Lorien Nursing - Elkridge Addition**  
7615 Washington Blvd  
Elkridge, Maryland 21075

**LIFE SAFETY PLAN GROUND FLOOR**

DATE	April 4, 2019
SCALE	3/32" = 1'-0"
DRAWN	
JOB	
SHEET	LS11
OF	SHEETS