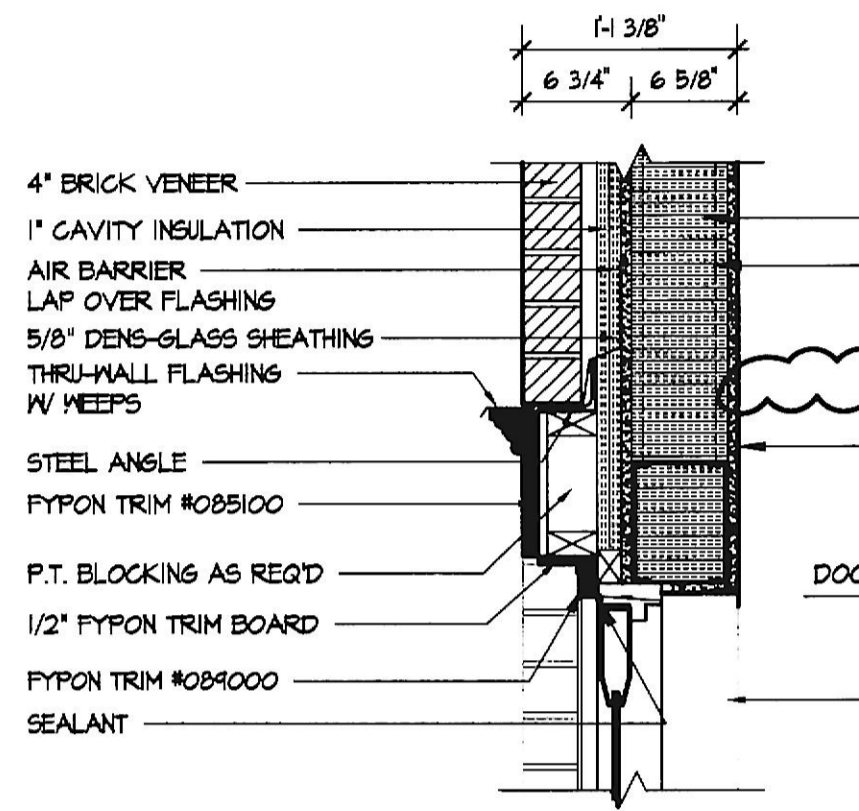
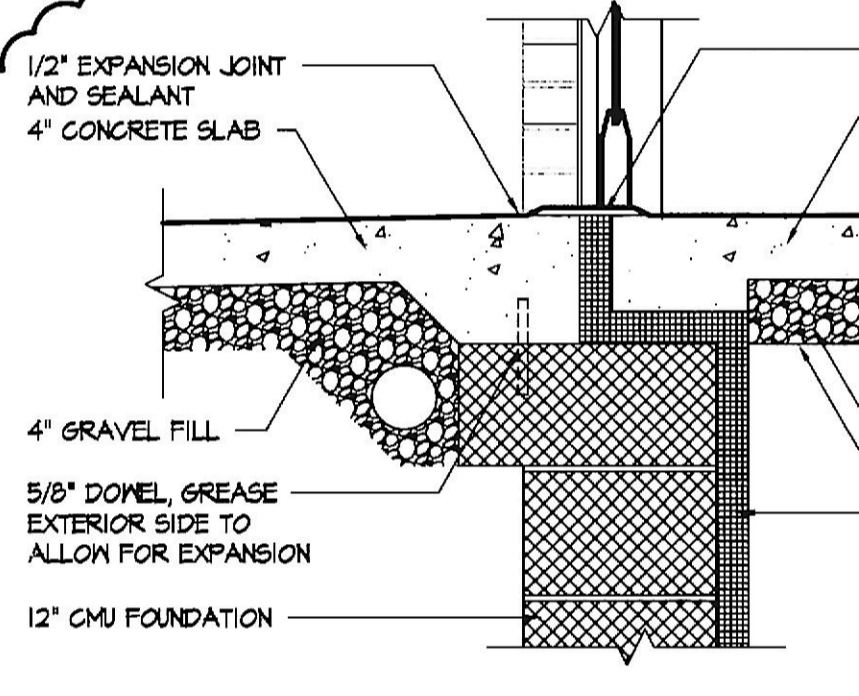


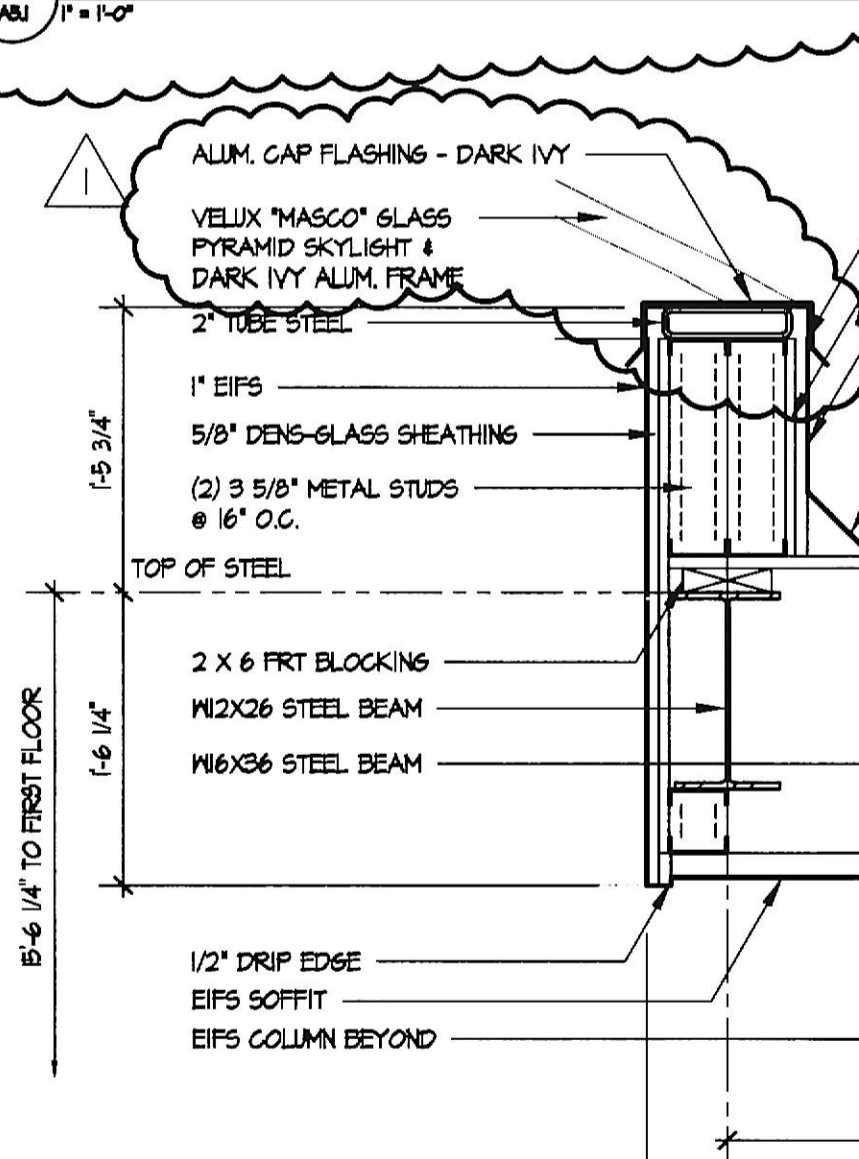
20 FIRE EXTINGUISHER CABINET DETAILS  
AS.1 1" = 1'-0"



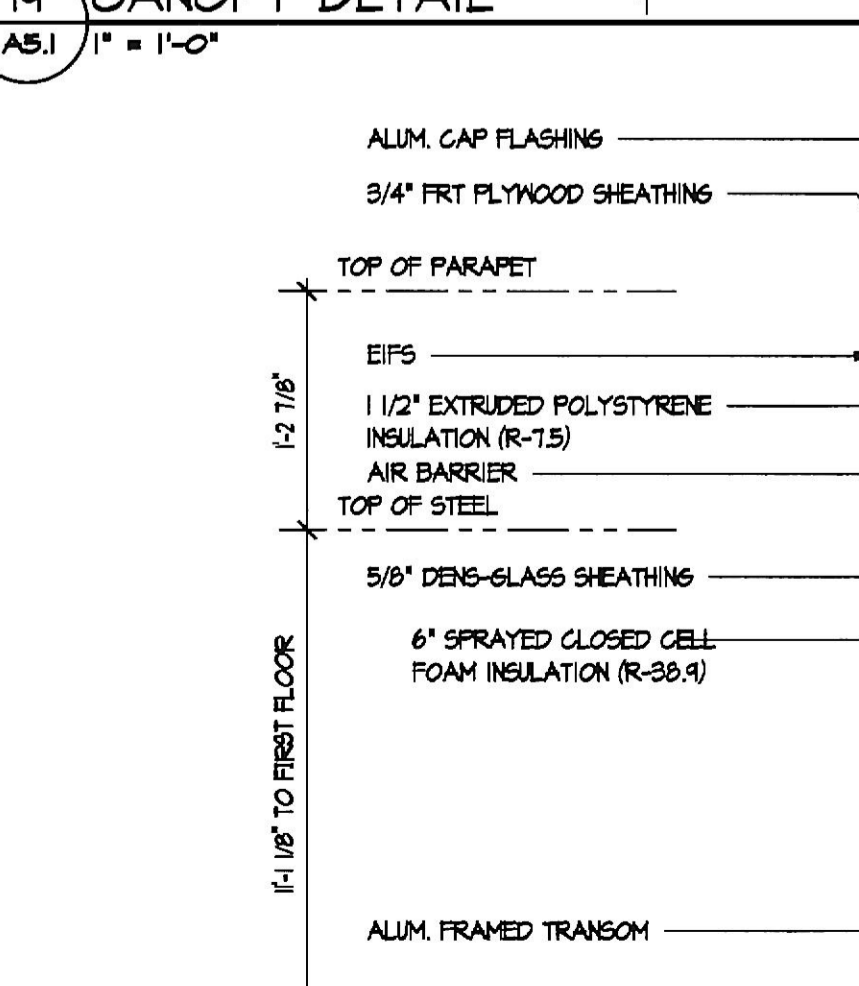
17 DOOR HEAD @ BRICK AND STUD  
AS.1 1" = 1'-0"



16 DOOR HEAD @ DRYVIT AND STUD  
AS.1 1" = 1'-0"



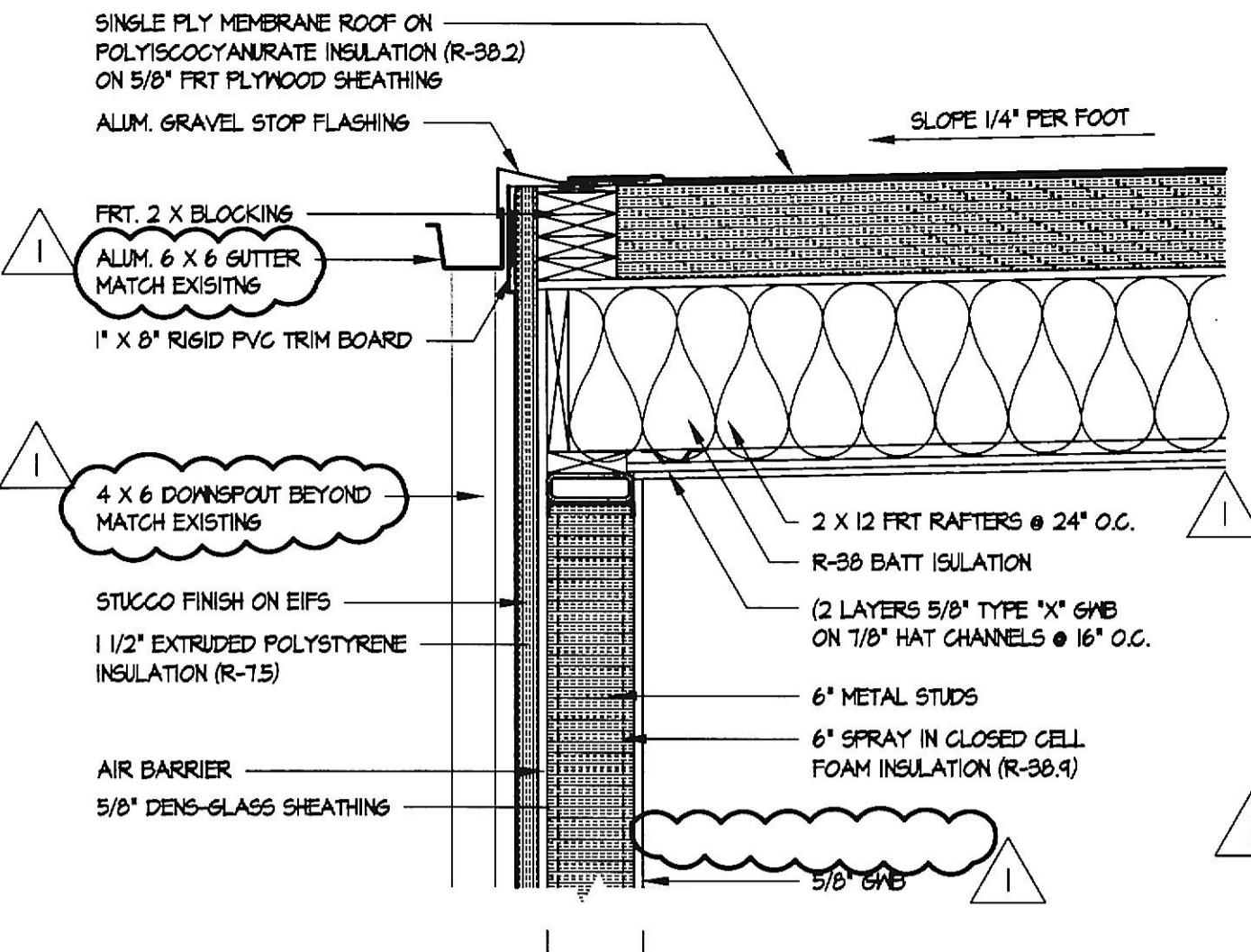
15 EXTERIOR DOOR SILL DETAIL  
AS.1 1" = 1'-0"



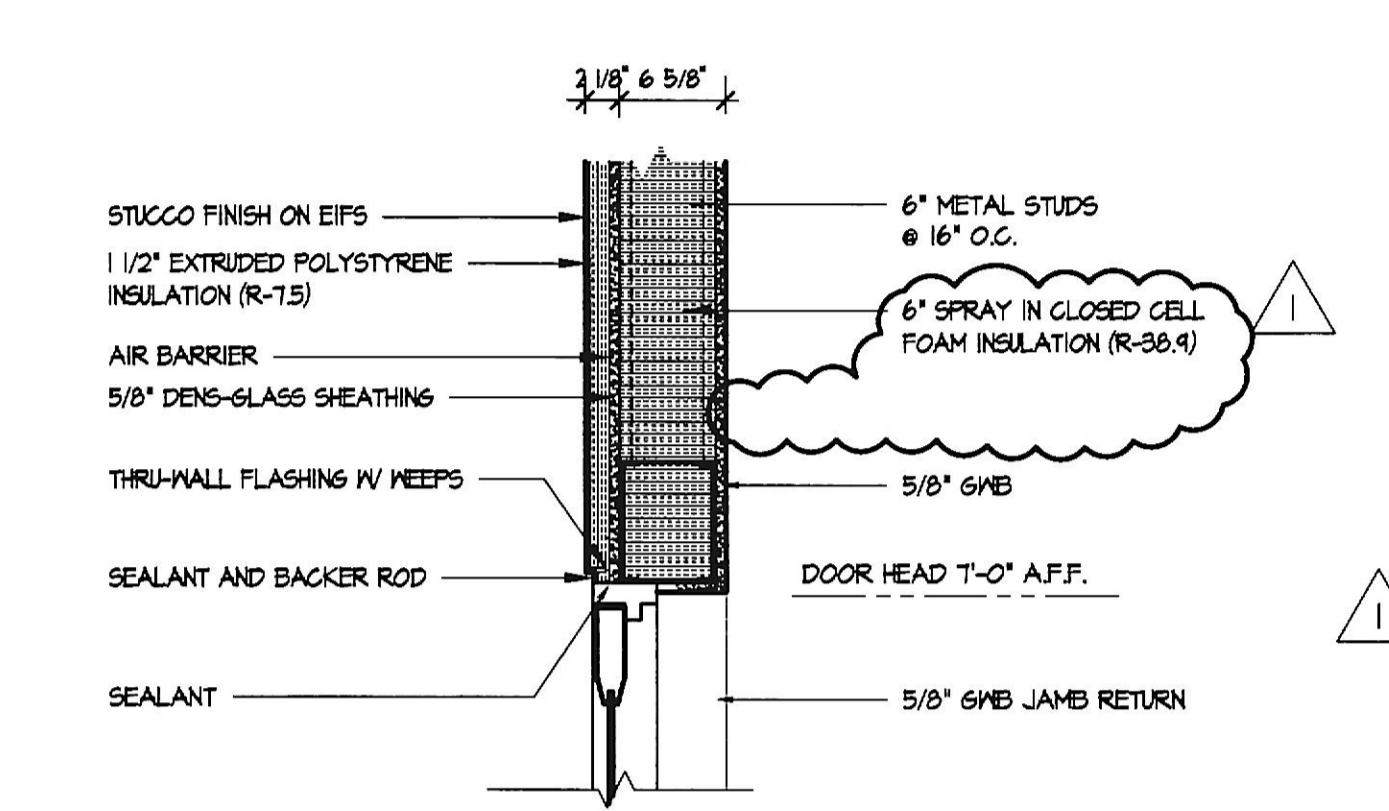
19 CANOPY DETAIL  
AS.1 1" = 1'-0"



21 VESTIBULE PARAPET DETAIL  
AS.1 1" = 1'-0"



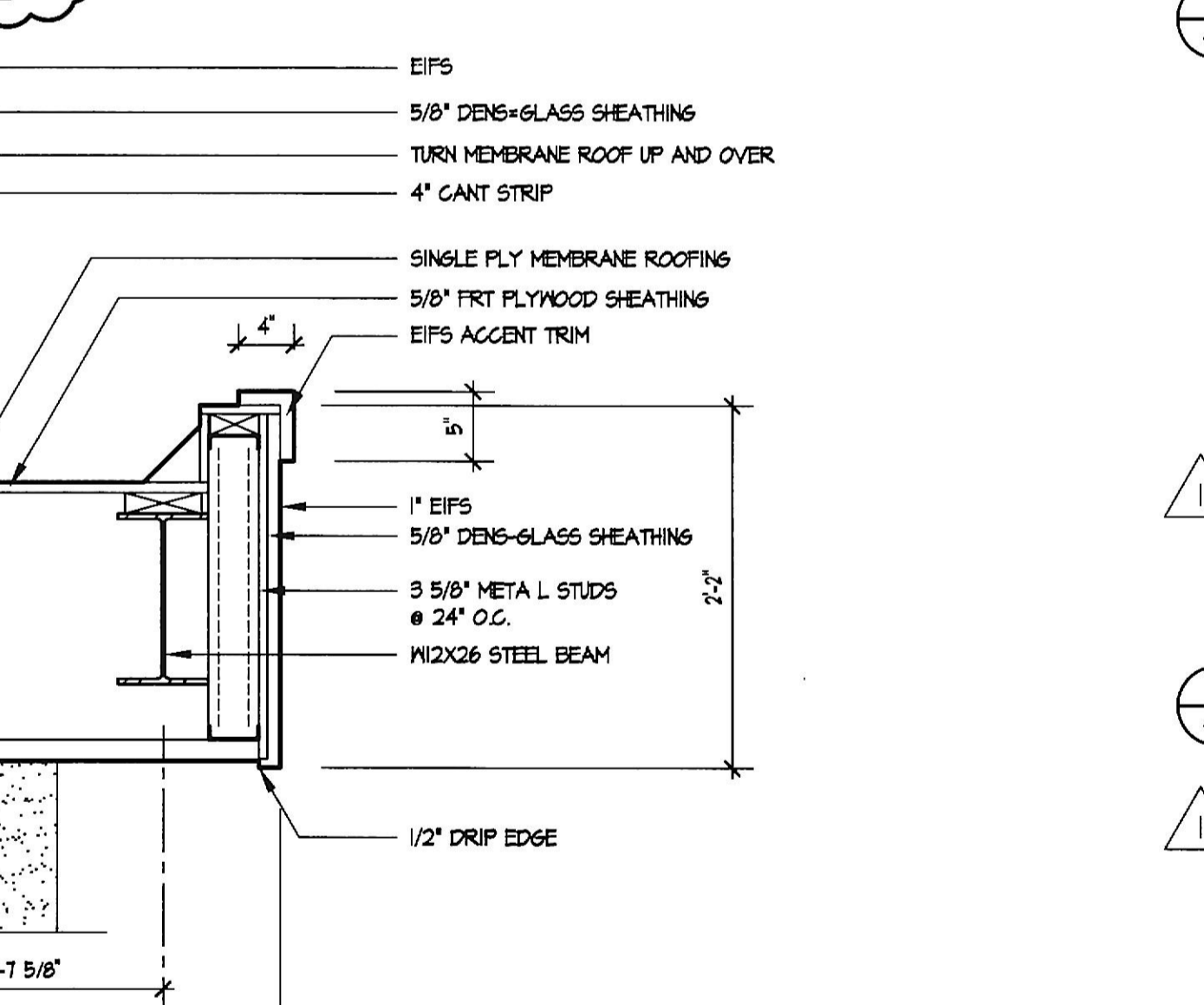
15 GRAVEL STOP DETAIL  
AS.1 1" = 1'-0"



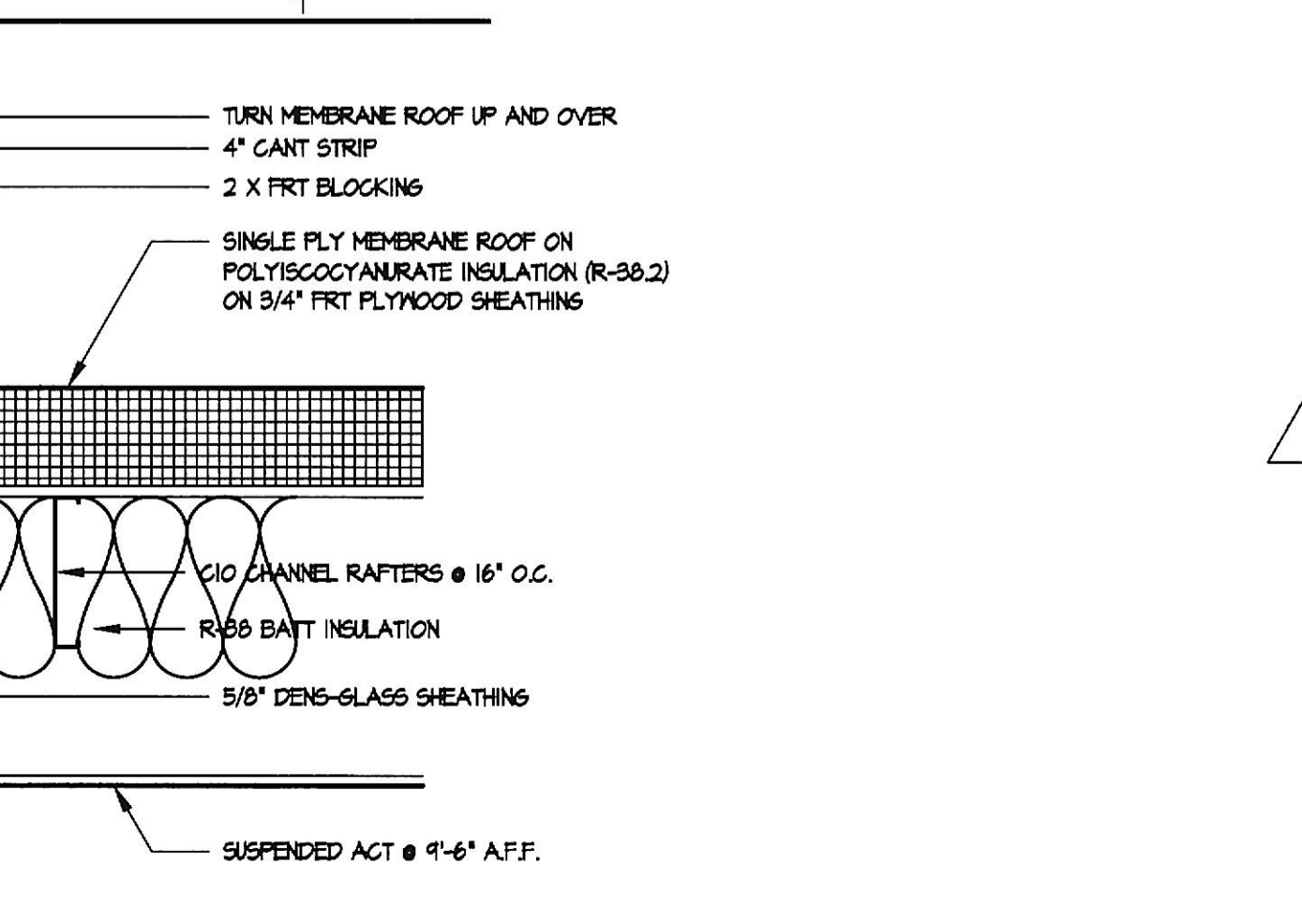
17 DOOR HEAD @ BRICK AND STUD  
AS.1 1" = 1'-0"



16 DOOR HEAD @ DRYVIT AND STUD  
AS.1 1" = 1'-0"



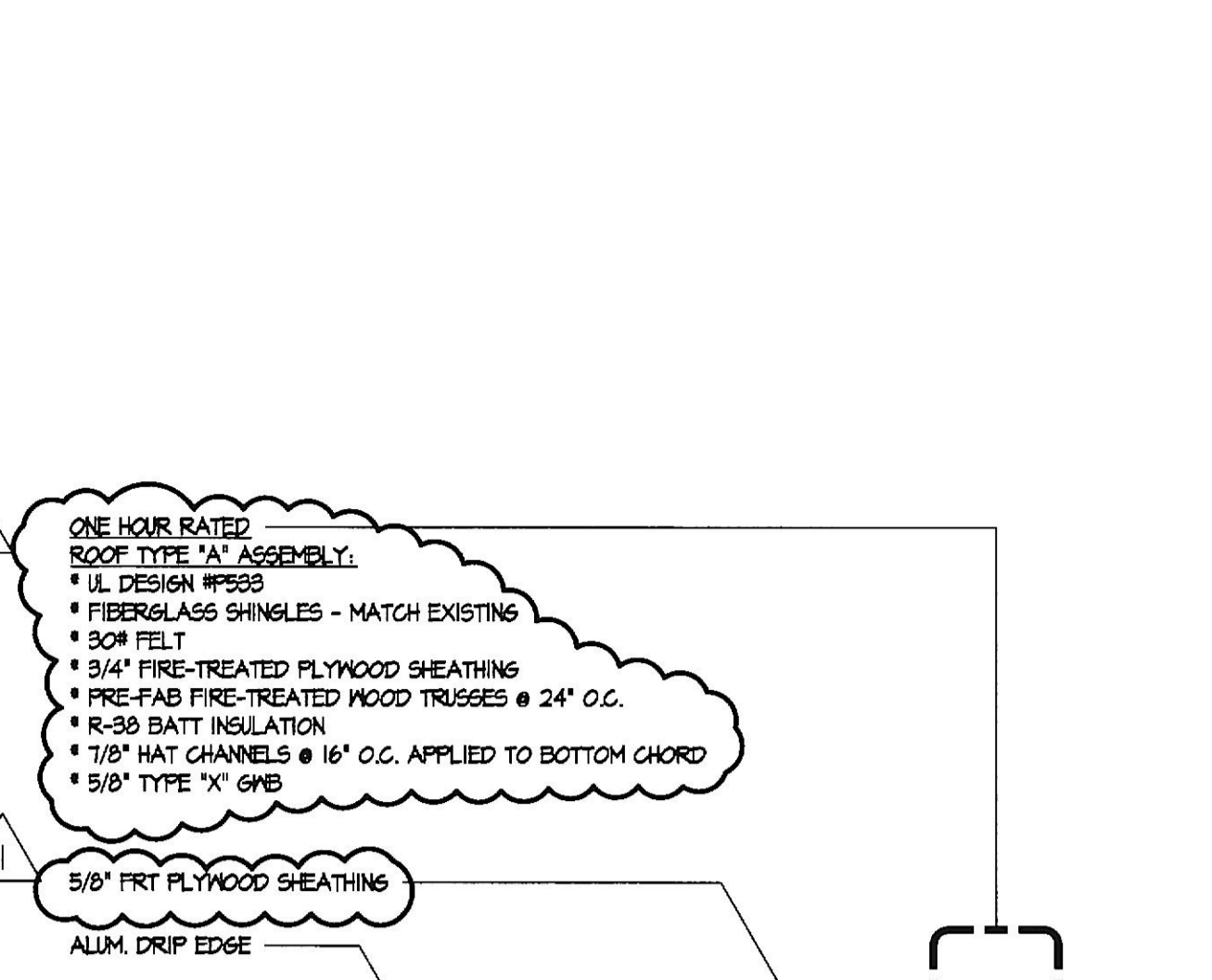
15 EXTERIOR DOOR SILL DETAIL  
AS.1 1" = 1'-0"



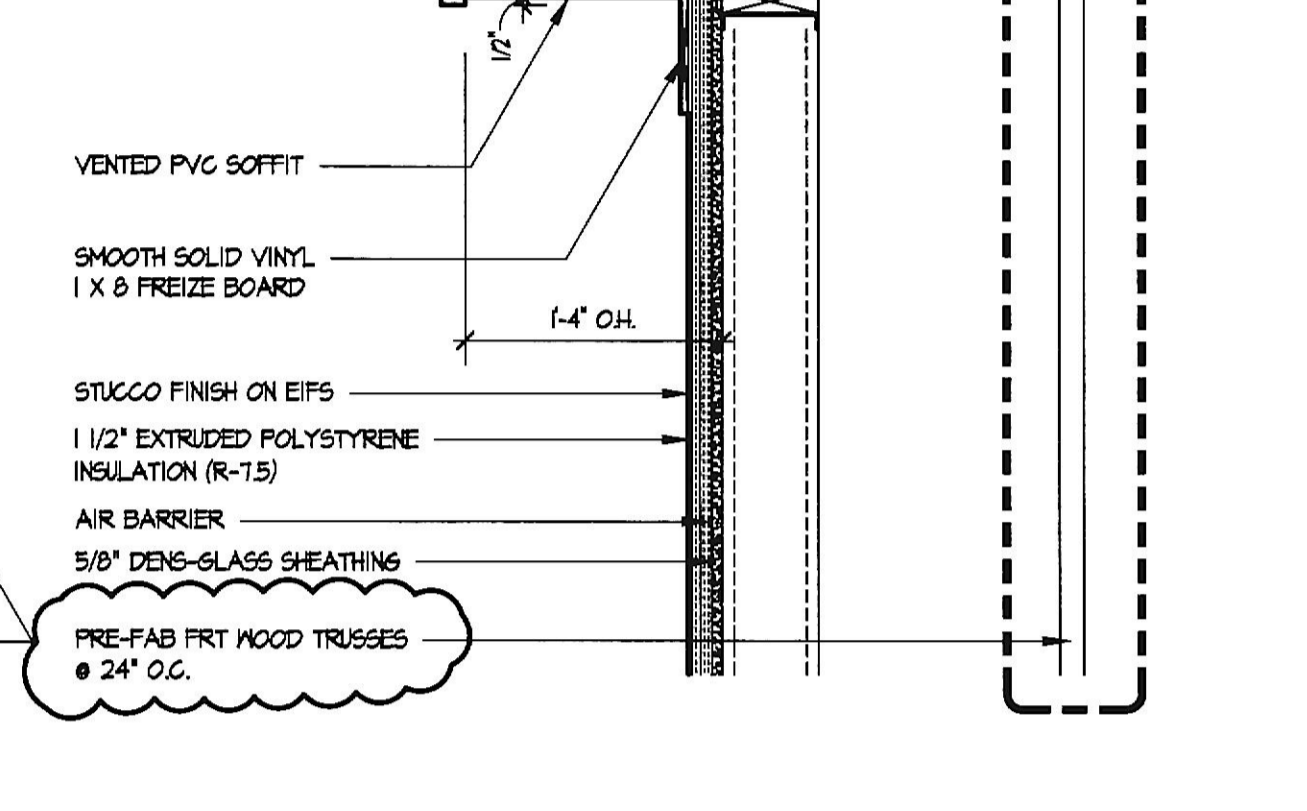
19 CANOPY DETAIL  
AS.1 1" = 1'-0"



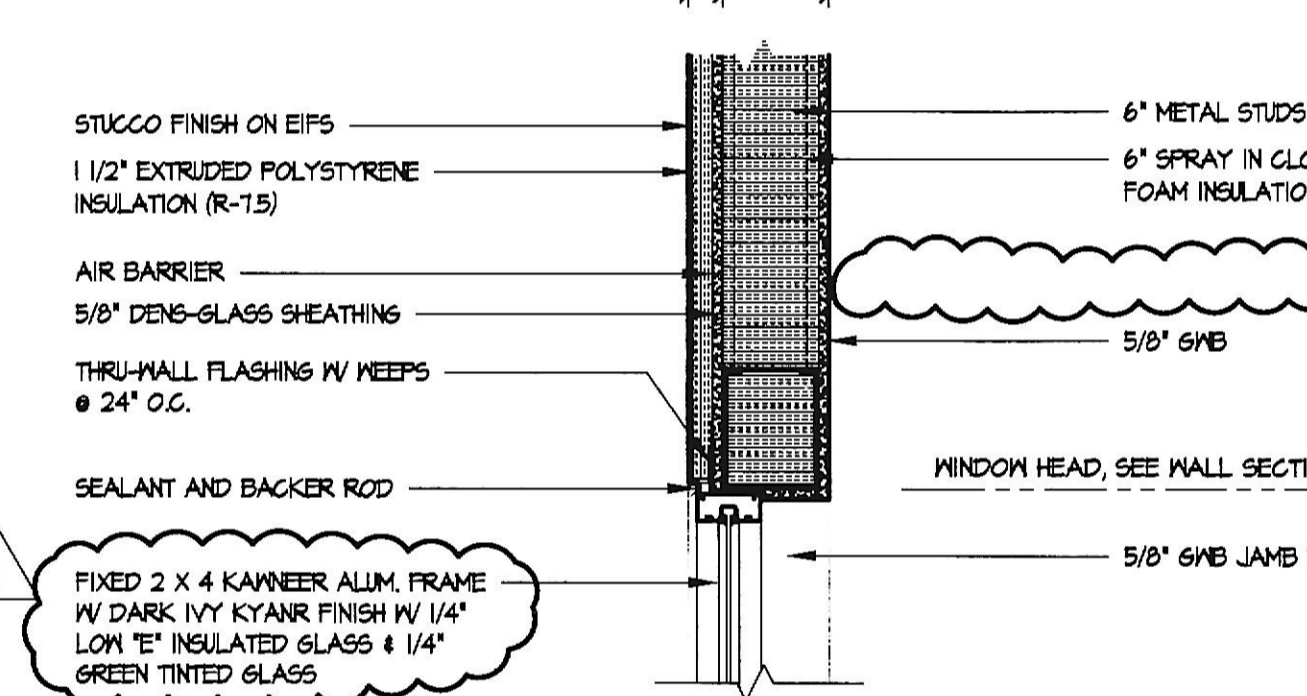
21 VESTIBULE PARAPET DETAIL  
AS.1 1" = 1'-0"



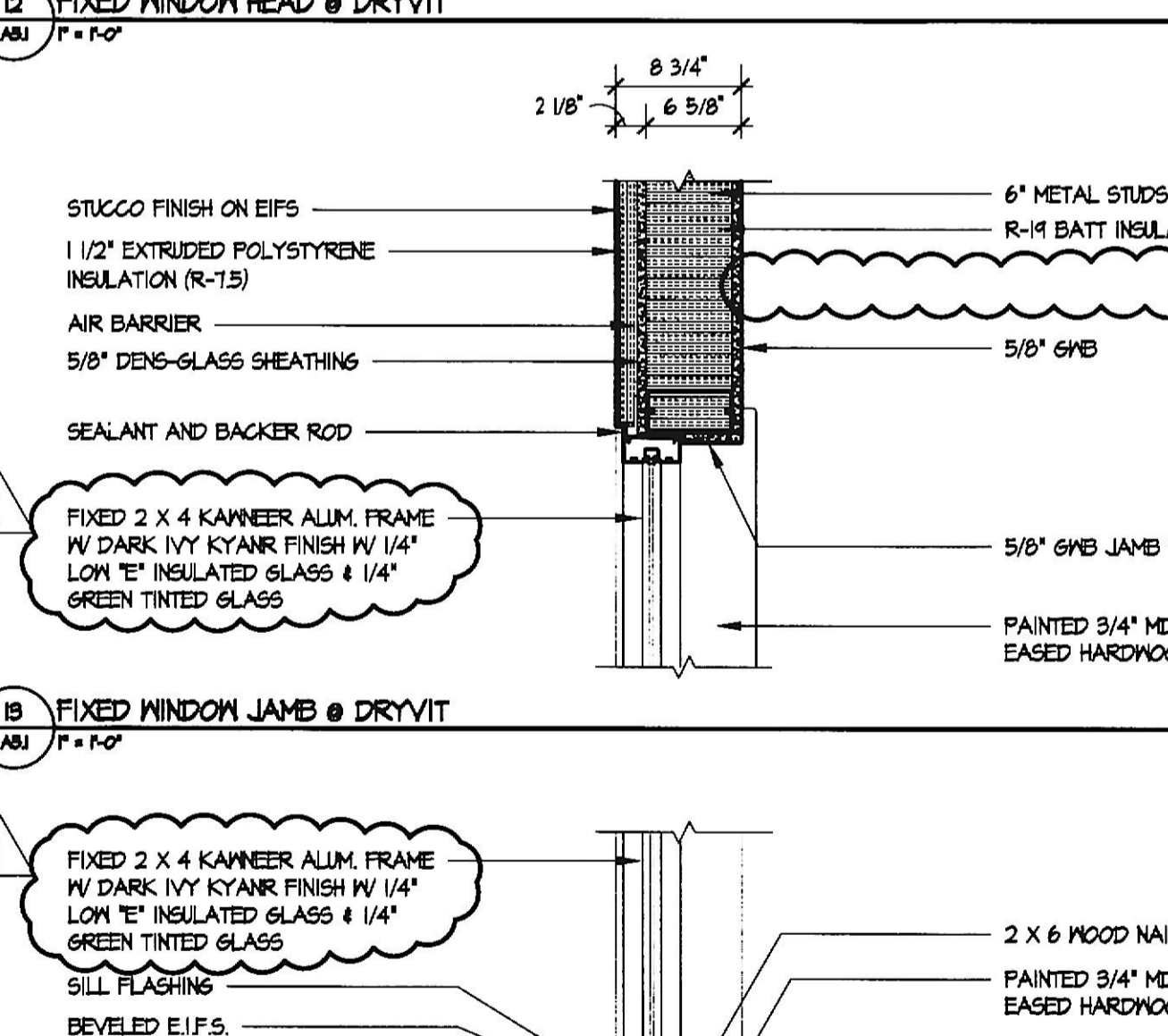
11 RAKE OVERHANG DETAIL @ DRYVIT  
AS.1 1" = 1'-0"



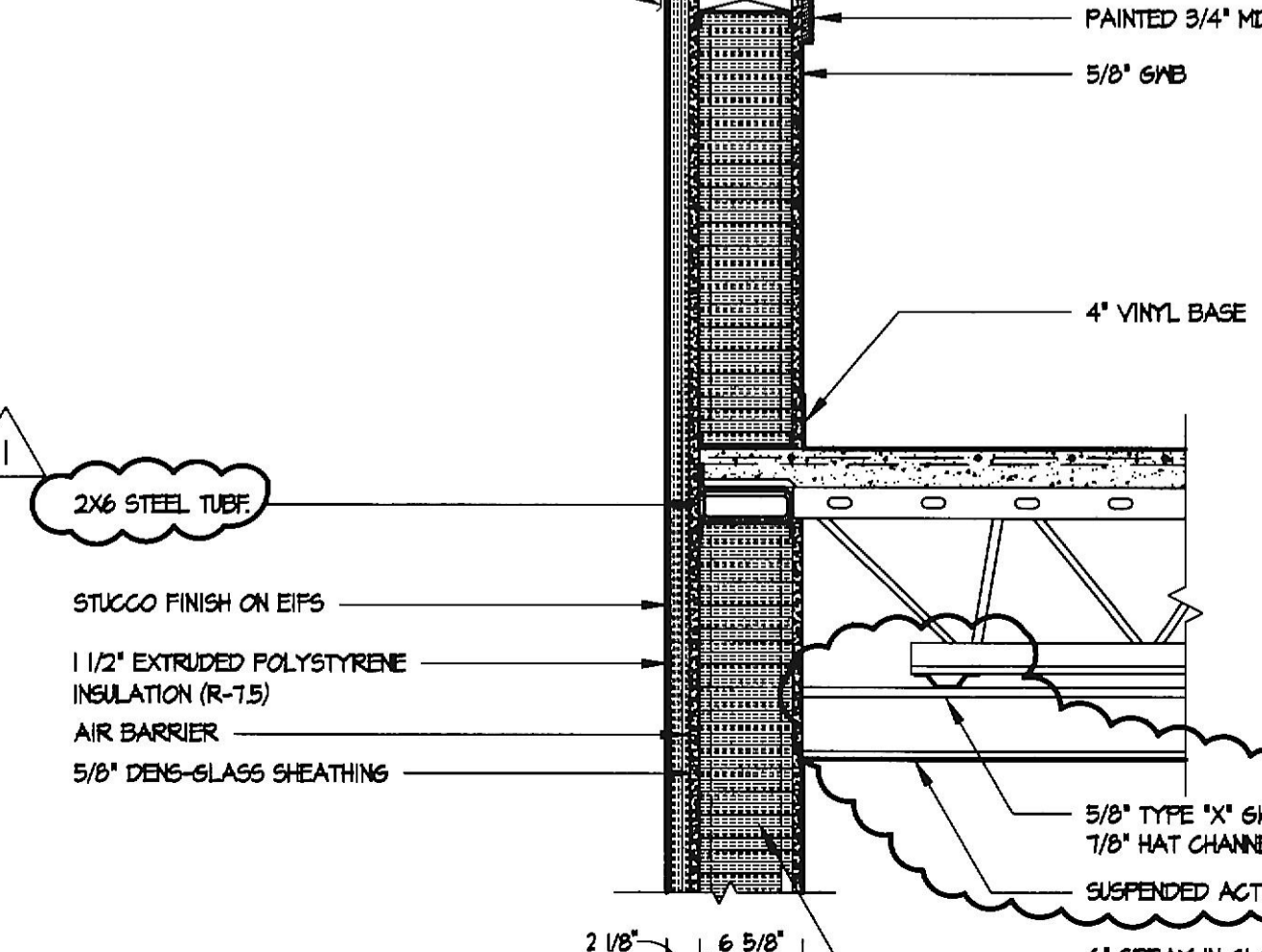
17 DOOR HEAD @ BRICK AND STUD  
AS.1 1" = 1'-0"



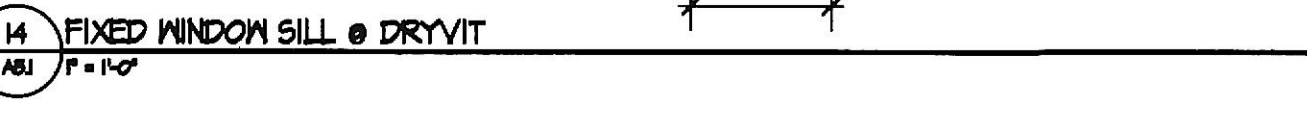
16 DOOR HEAD @ DRYVIT AND STUD  
AS.1 1" = 1'-0"



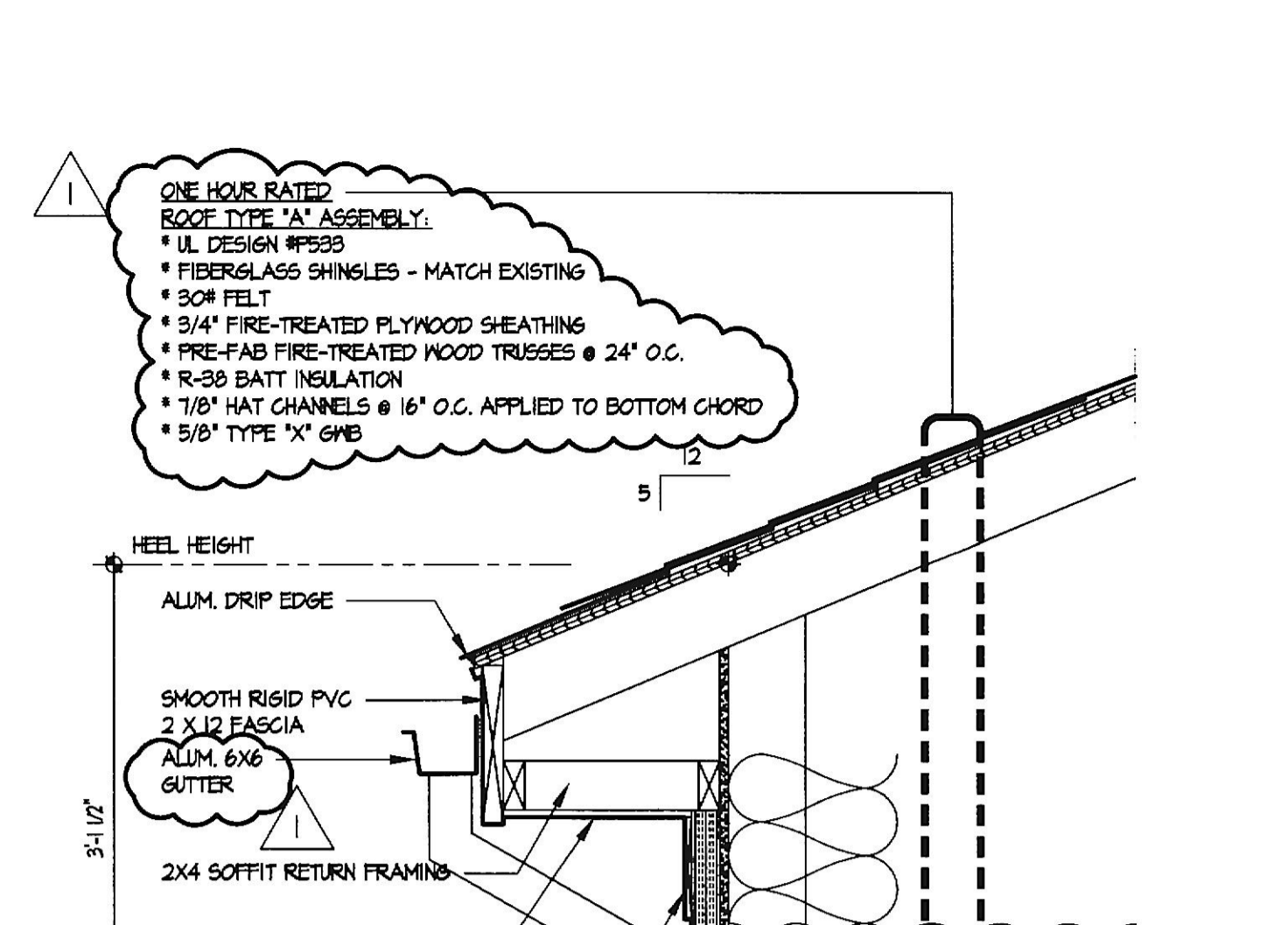
15 EXTERIOR DOOR SILL DETAIL  
AS.1 1" = 1'-0"



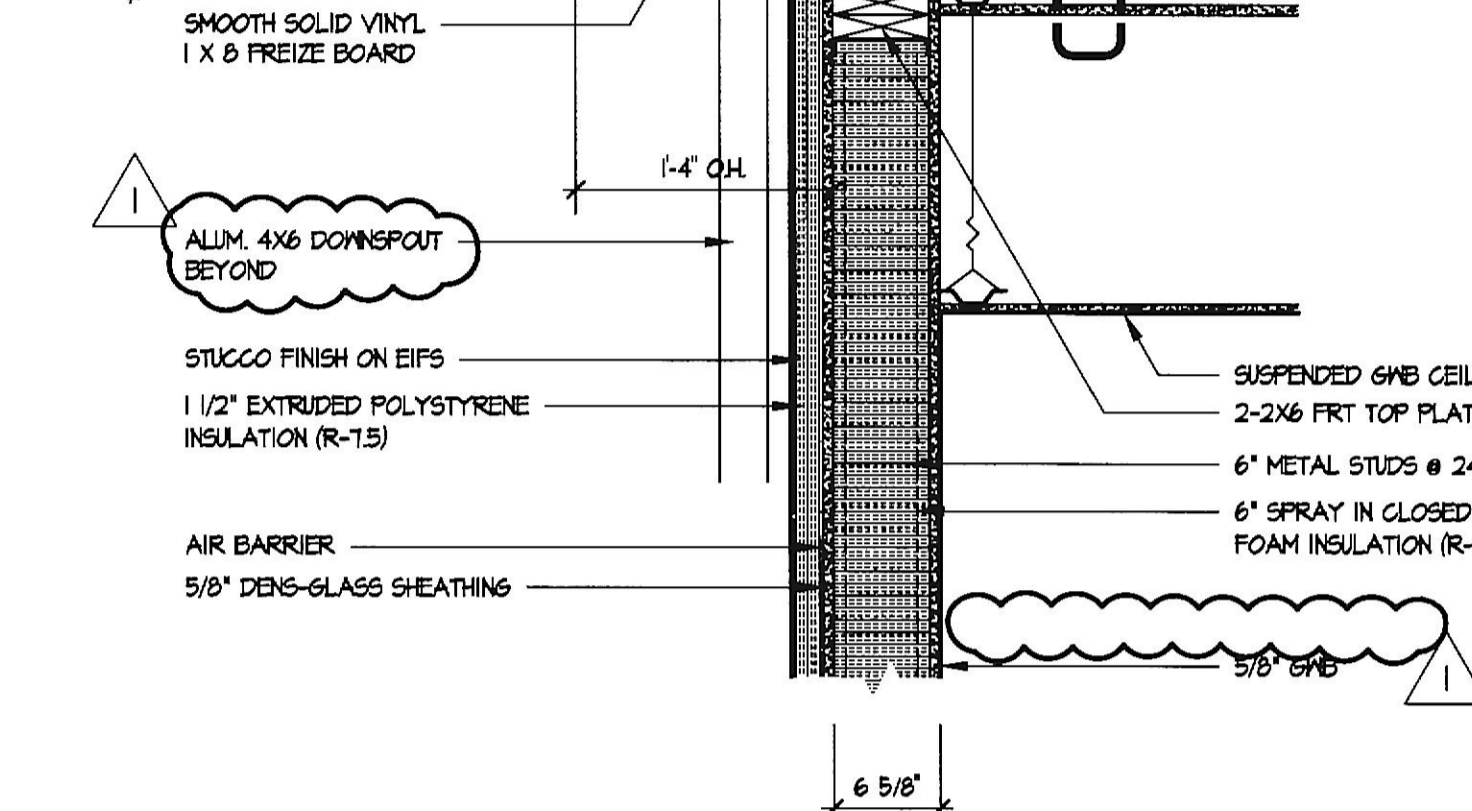
19 CANOPY DETAIL  
AS.1 1" = 1'-0"



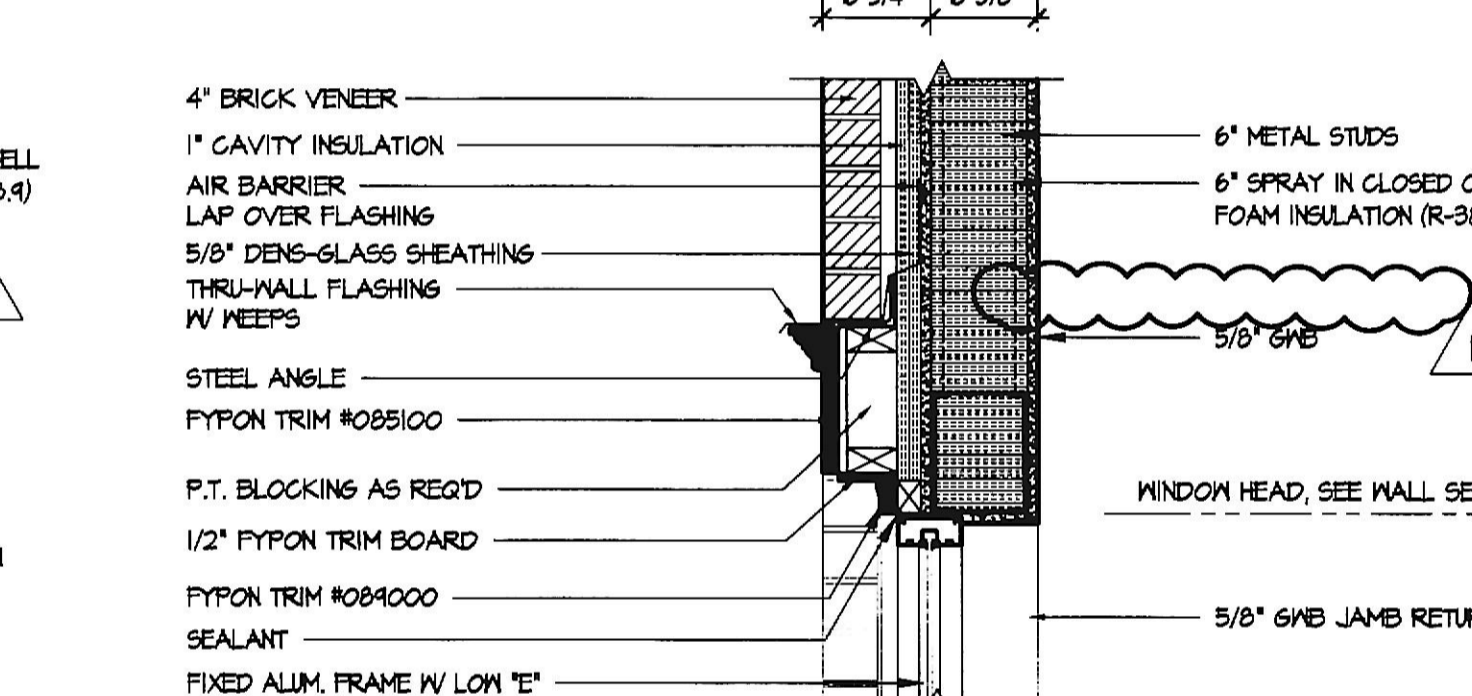
21 VESTIBULE PARAPET DETAIL  
AS.1 1" = 1'-0"



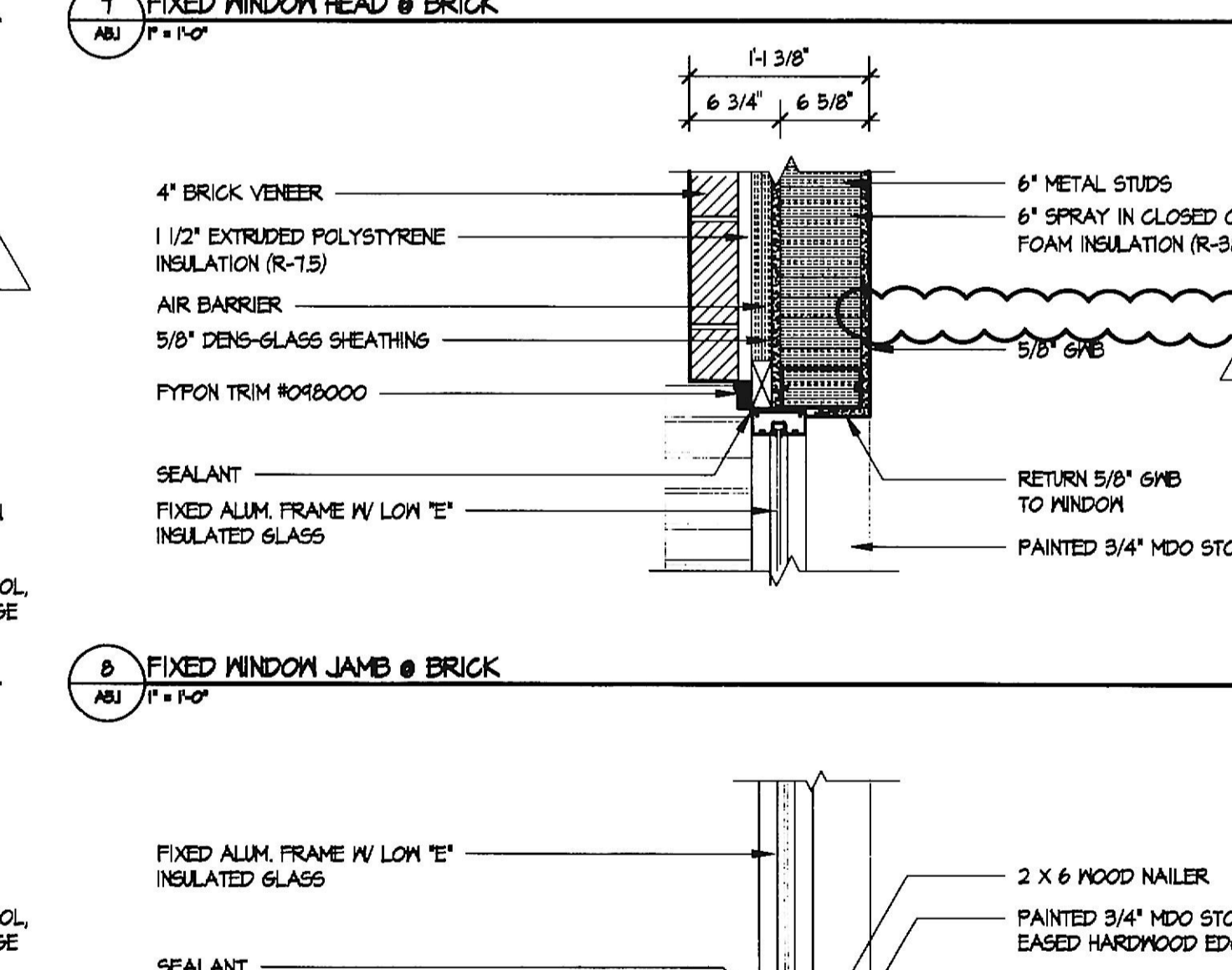
6 ROOF OVERHANG DETAIL @ DRYVIT ON NURSING WING  
AS.1 1" = 1'-0"



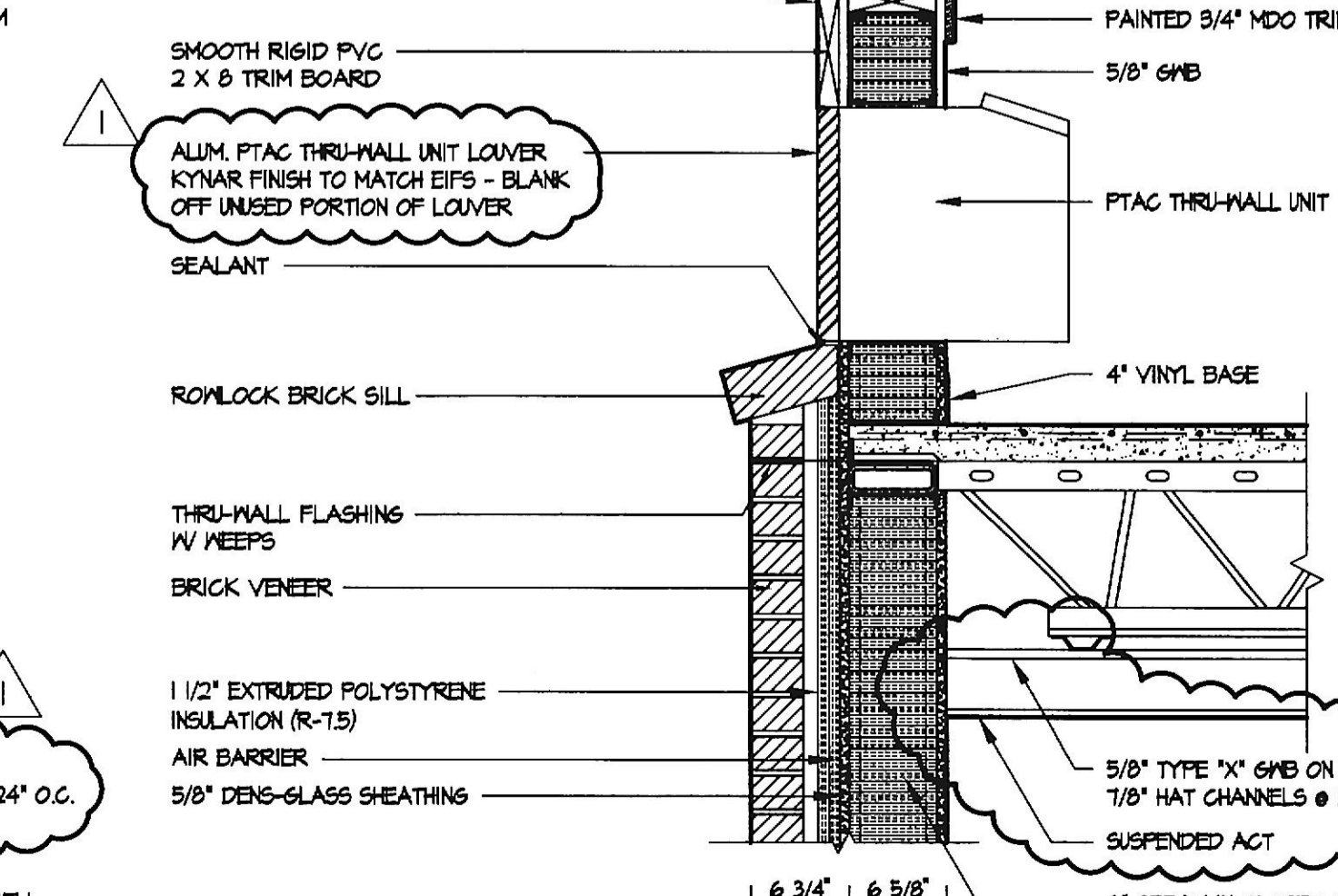
17 DOOR HEAD @ BRICK AND STUD  
AS.1 1" = 1'-0"



16 DOOR HEAD @ DRYVIT AND STUD  
AS.1 1" = 1'-0"



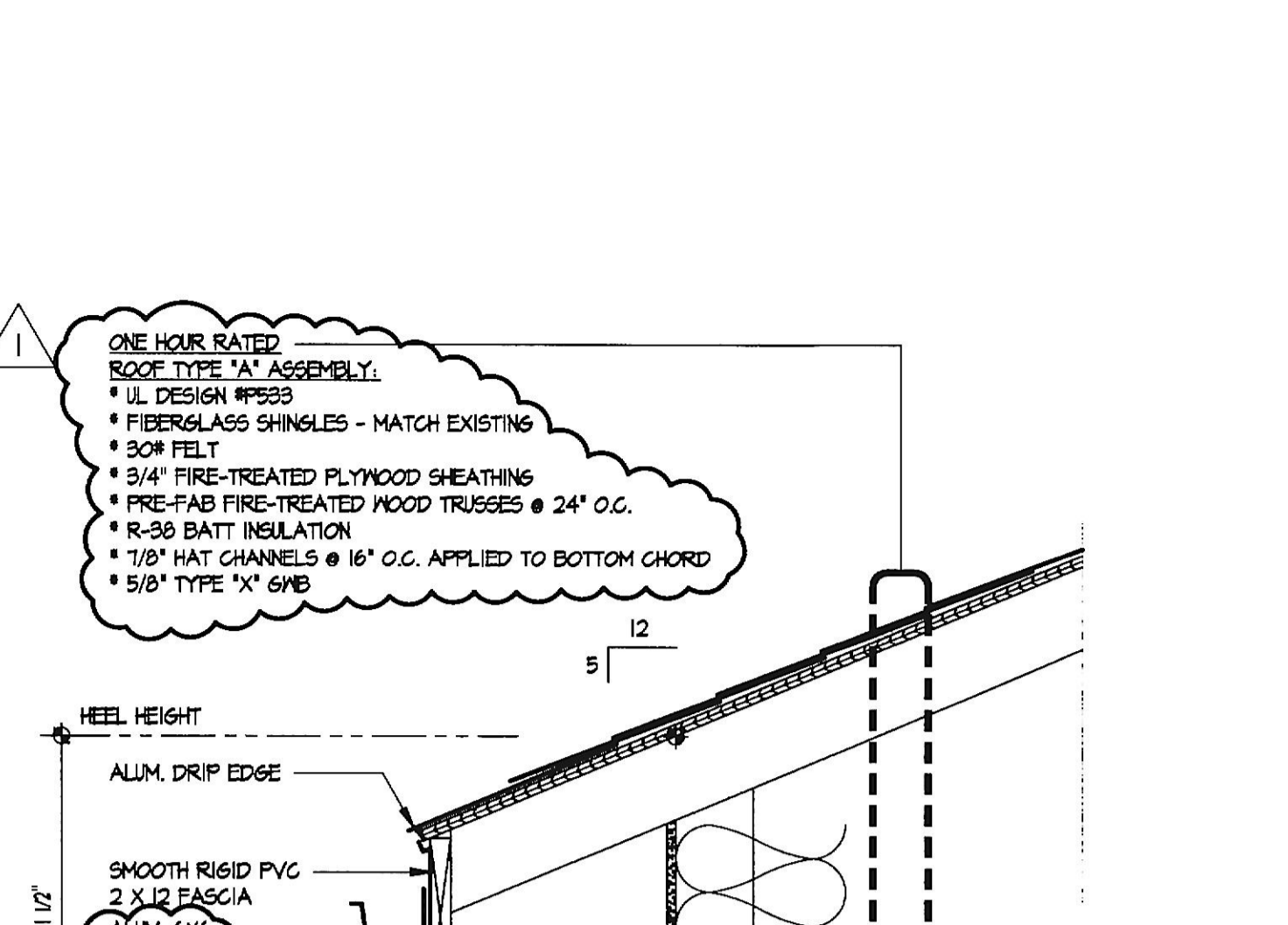
15 EXTERIOR DOOR SILL DETAIL  
AS.1 1" = 1'-0"



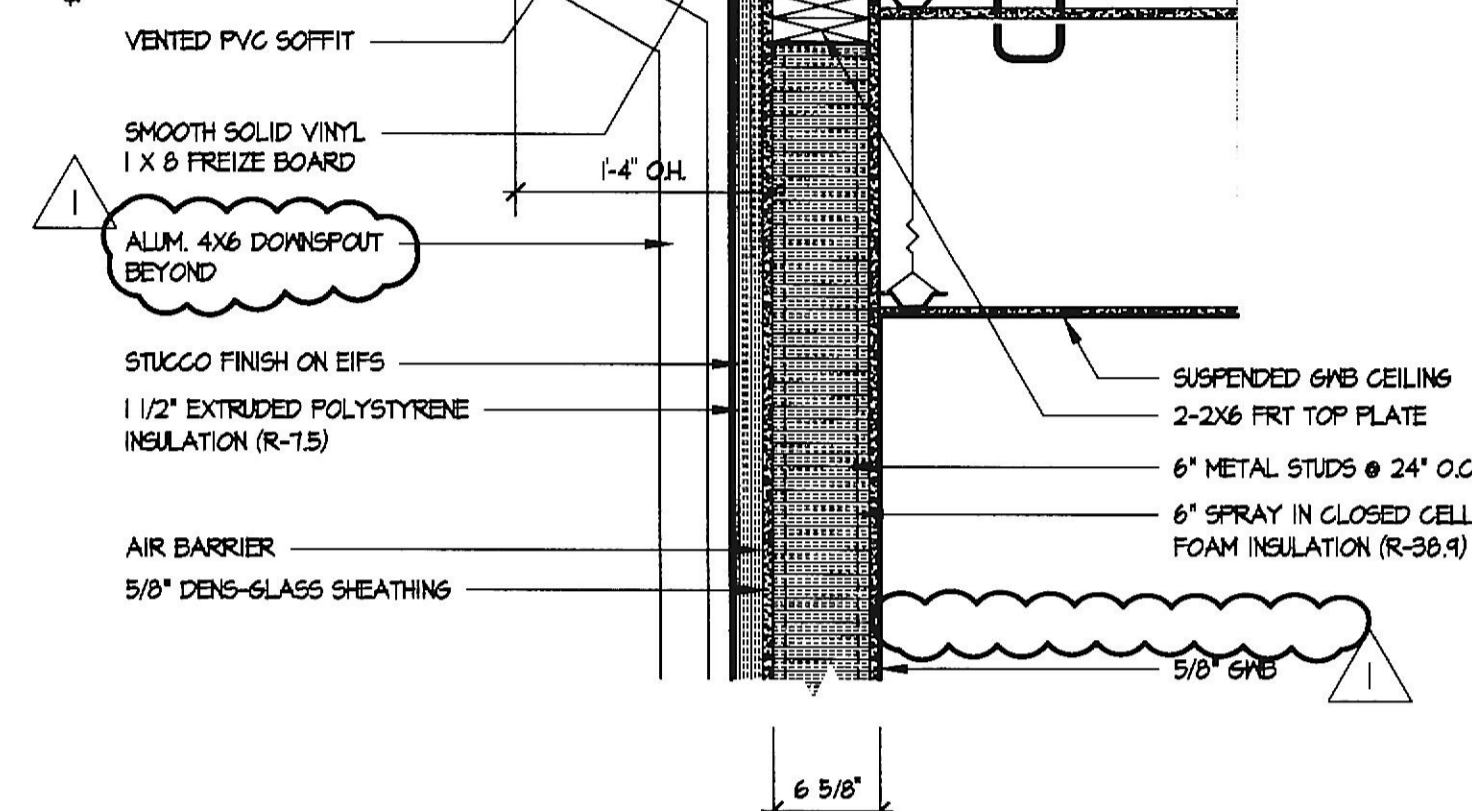
19 CANOPY DETAIL  
AS.1 1" = 1'-0"



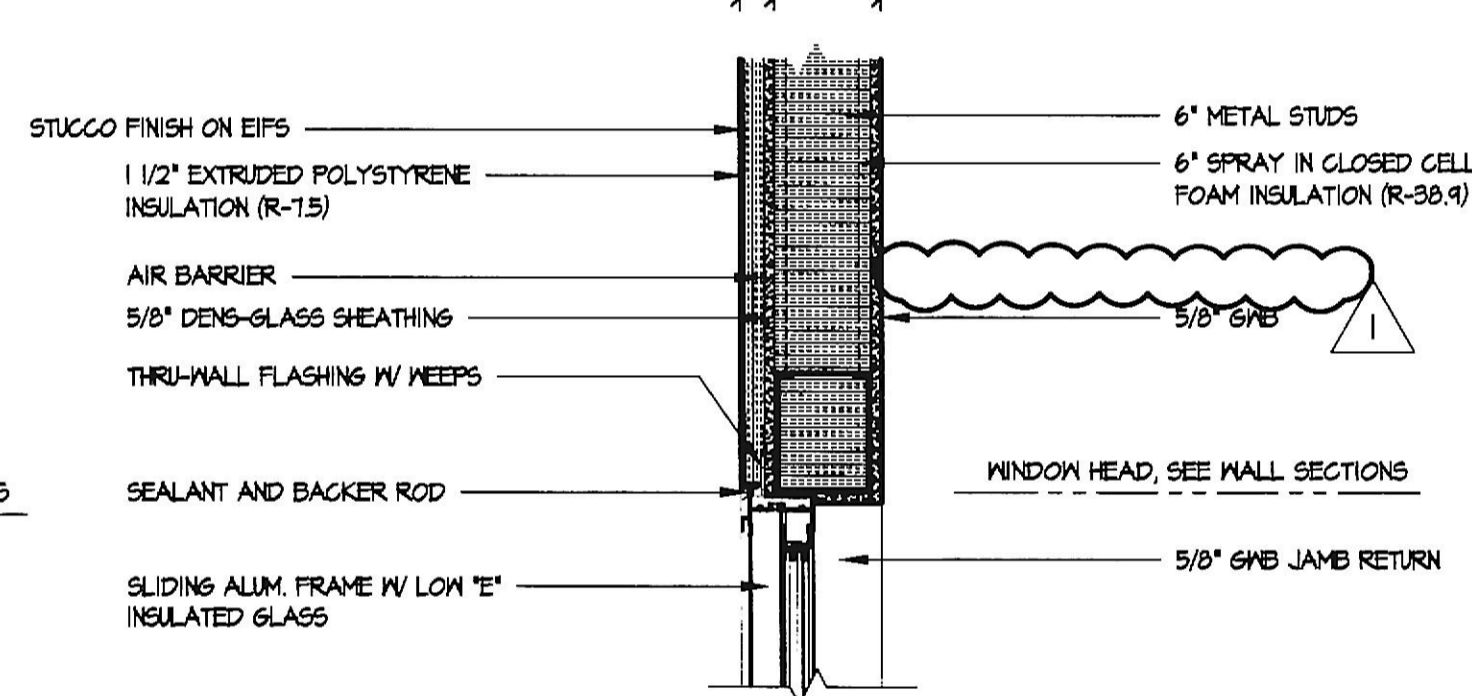
21 VESTIBULE PARAPET DETAIL  
AS.1 1" = 1'-0"



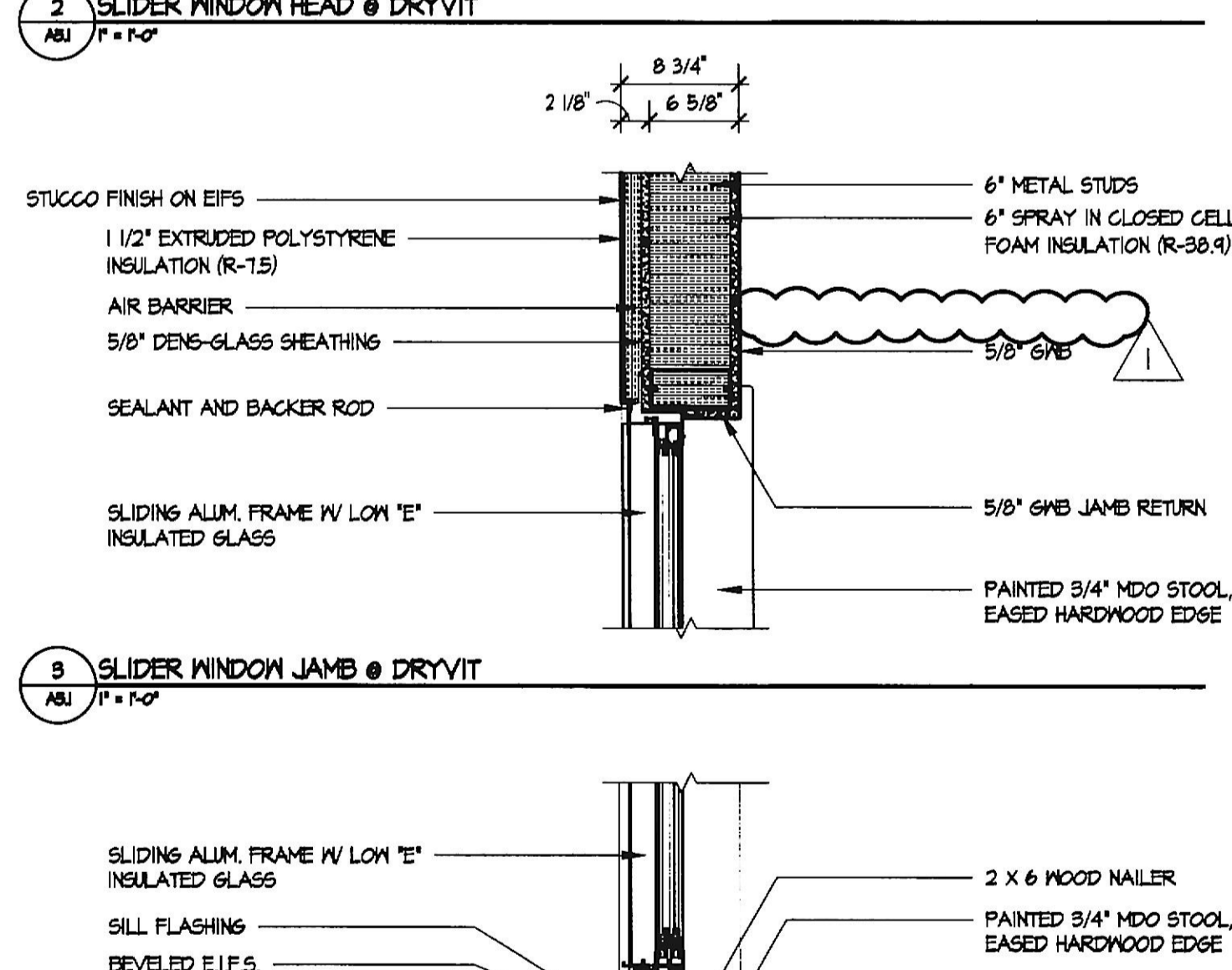
1 ROOF OVERHANG DETAIL @ DRYVIT  
AS.1 1" = 1'-0"



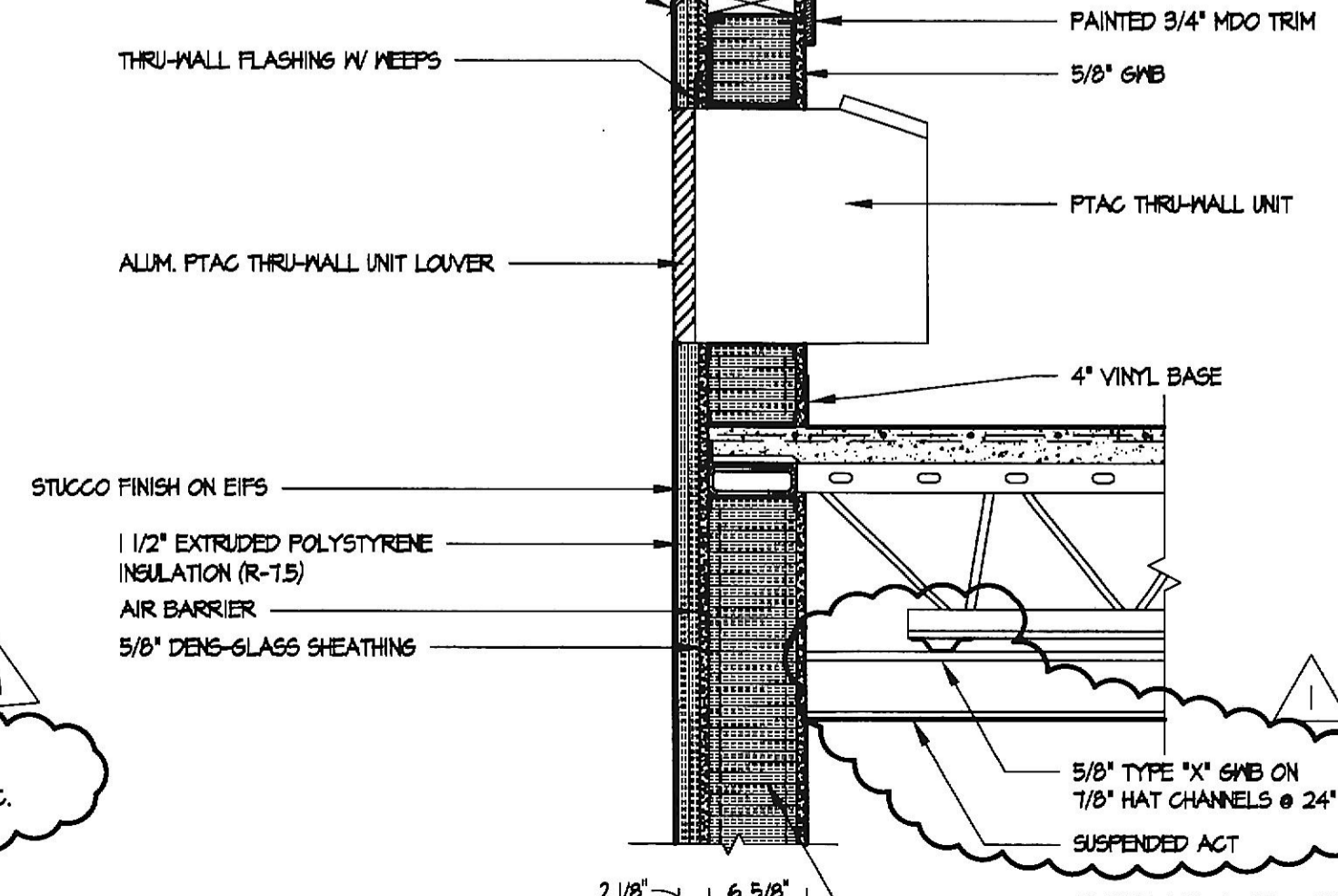
17 DOOR HEAD @ BRICK AND STUD  
AS.1 1" = 1'-0"



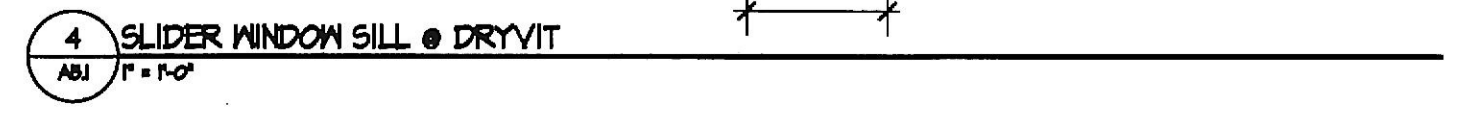
16 DOOR HEAD @ DRYVIT AND STUD  
AS.1 1" = 1'-0"



15 EXTERIOR DOOR SILL DETAIL  
AS.1 1" = 1'-0"



19 CANOPY DETAIL  
AS.1 1" = 1'-0"



21 VESTIBULE PARAPET DETAIL  
AS.1 1" = 1'-0"

REVISION	BY
1	JLB

1/26/04 PERMIT  
REVIEW COMMENTS

Professional Certification  
I certify that these documents were prepared or approved by me, and that I am duly licensed architect under the laws of the State of Maryland, license number 20022 A, expiration date February 25, 2020.

Lorien Nursing - Elkridge Addition  
 7615 Washington Blvd  
 Elkridge, Maryland 21075

DETAILS

DATE: April 4, 2019  
 SCALE: 1" = 1'-0"  
 DRAWN:  
 JOB: JOB NUMBER:  
 SHEET: **A5.1**  
 OF SHEETS