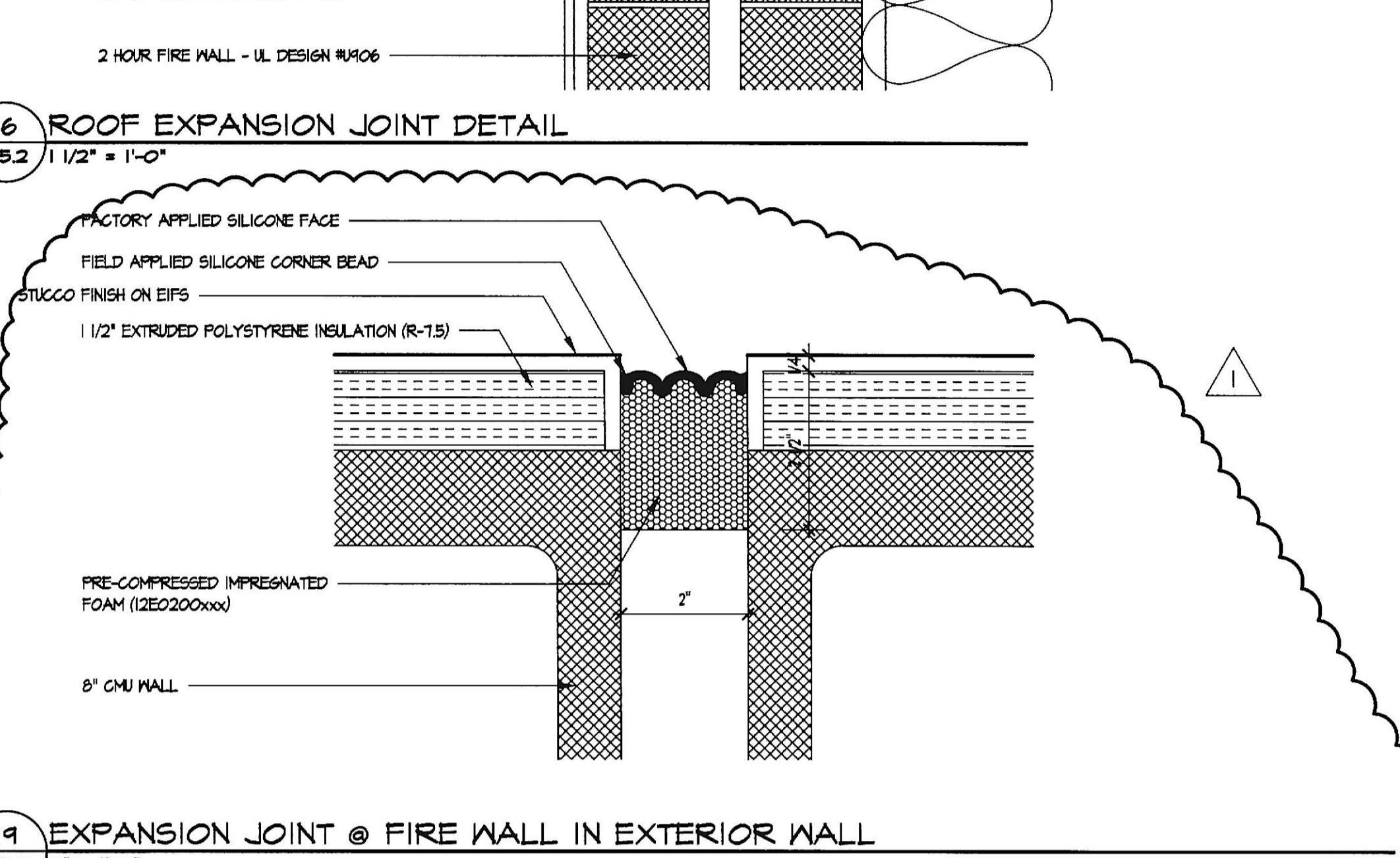
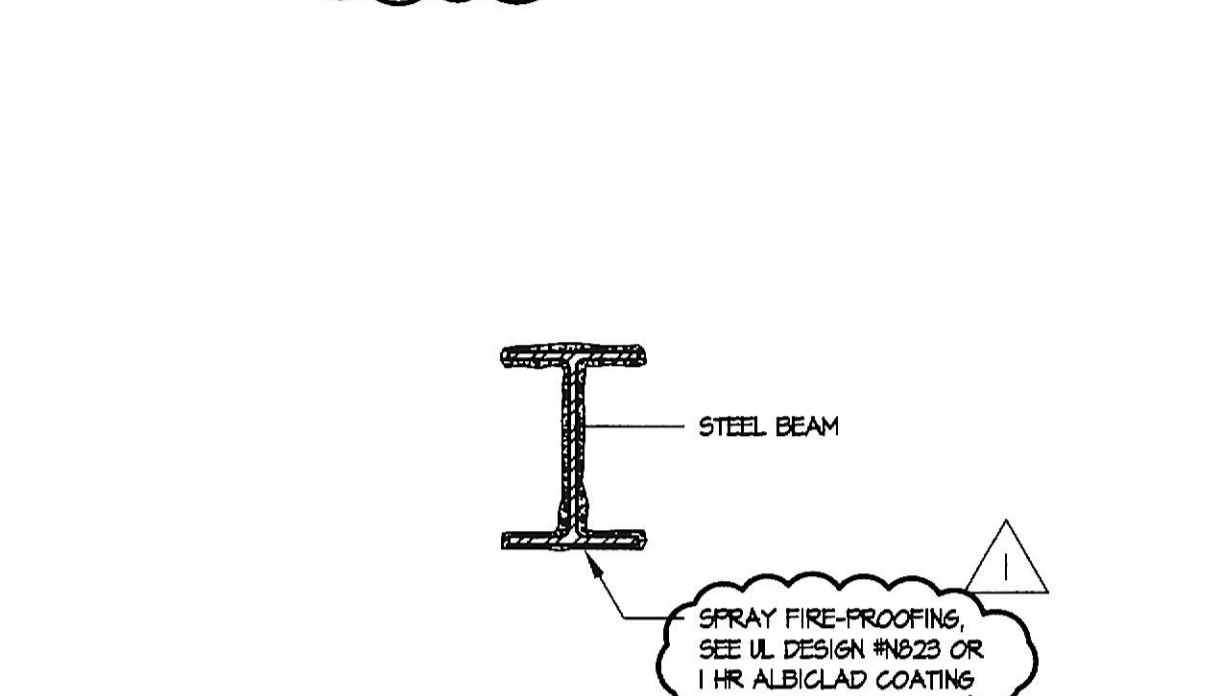
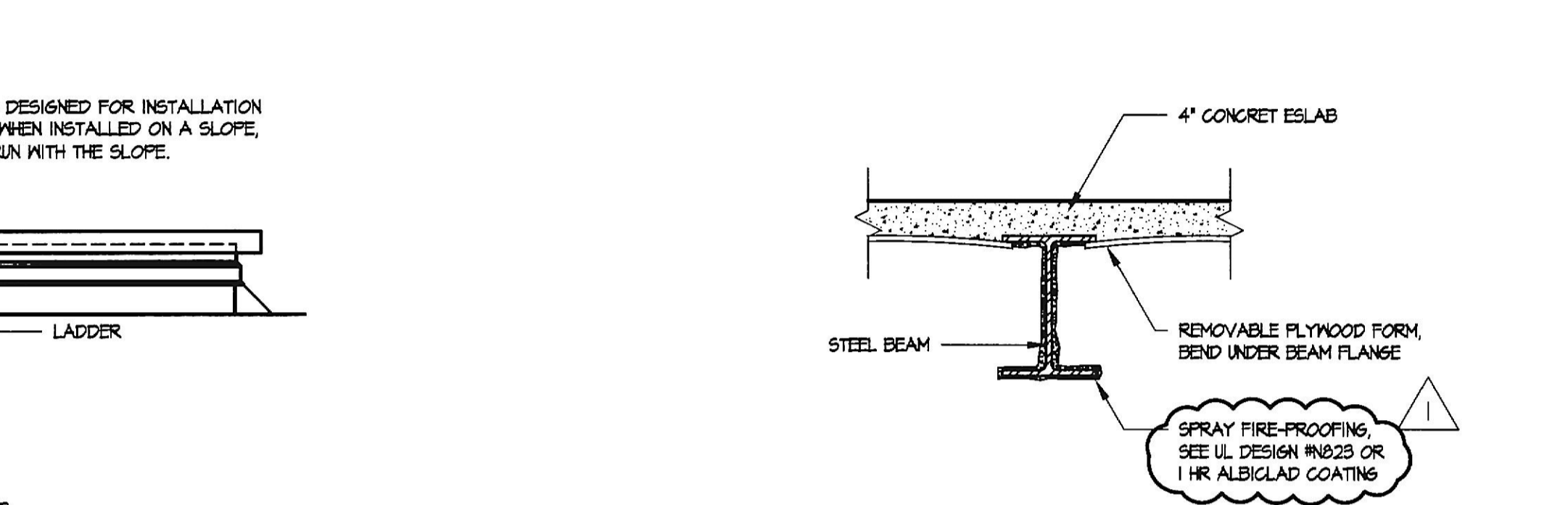
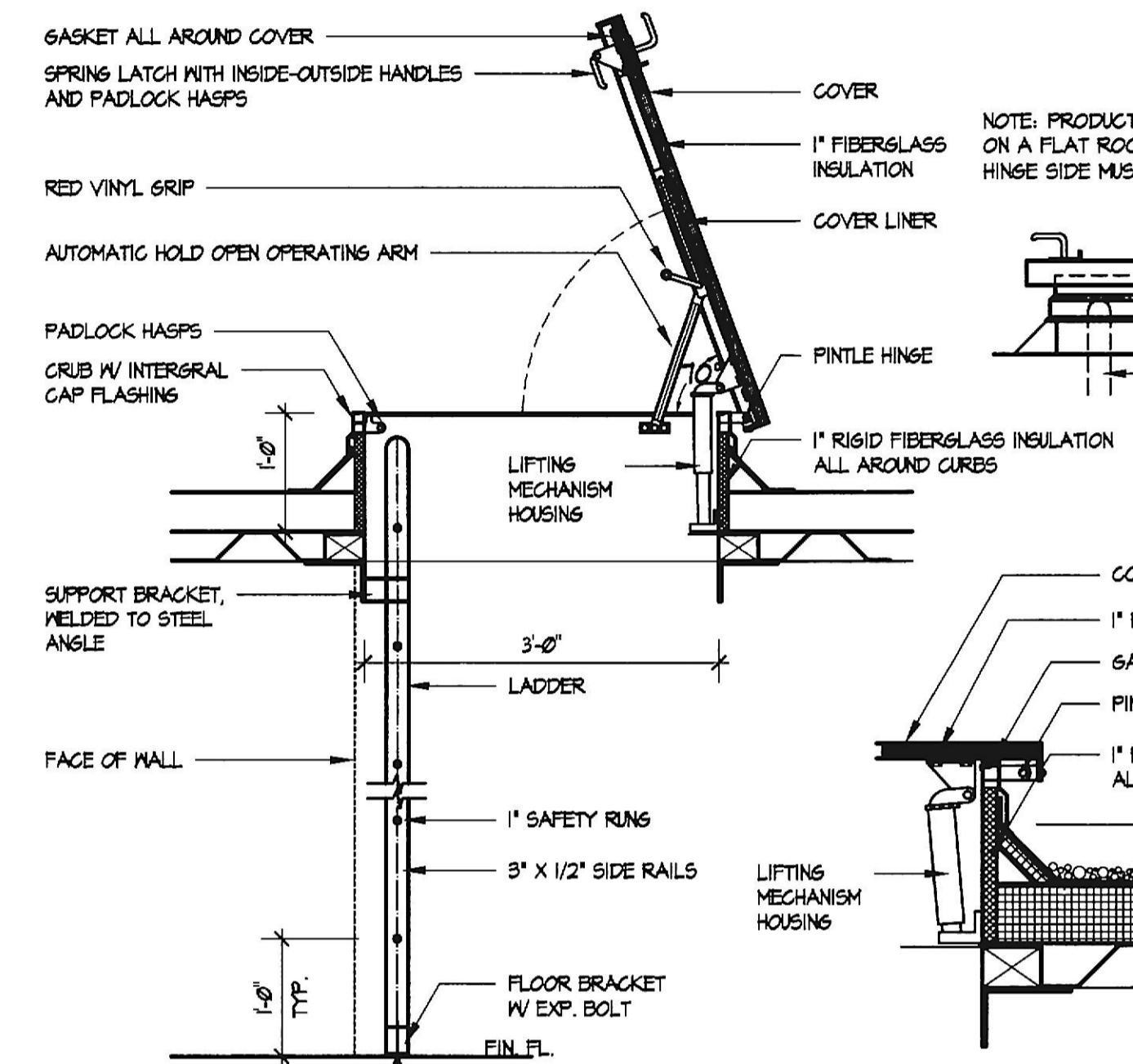


14 LOW ROOF TO WALL FLASHING DETAIL
AS.2 3\"/>

15 RIDGE VENT DETAIL
AS.2 3\"/>

3 LOW WALL WOOD GAP DETAIL
AS.2 1\"/>

16 ROOF EXPANSION JOINT DETAIL
AS.2 1\"/>

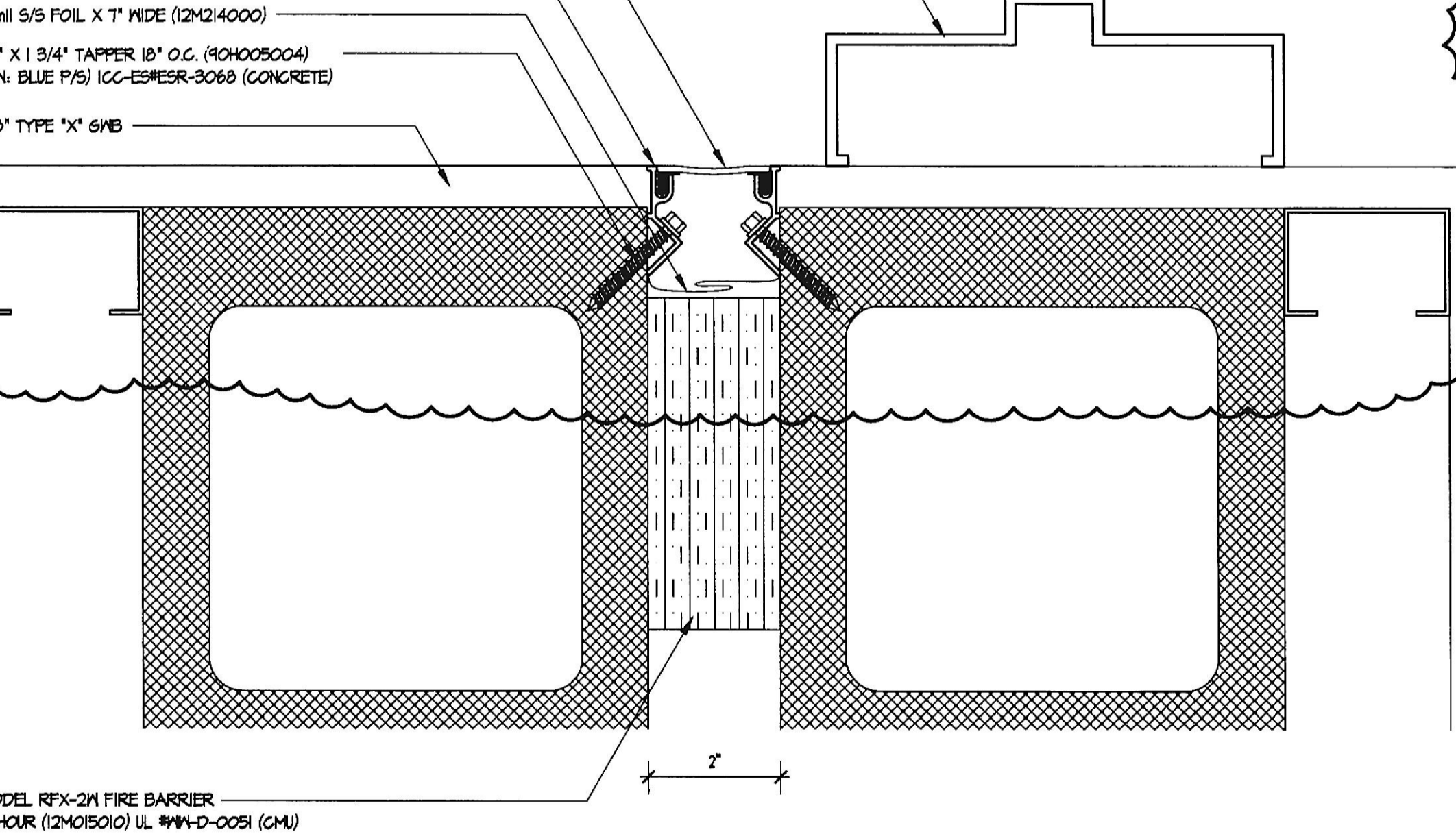
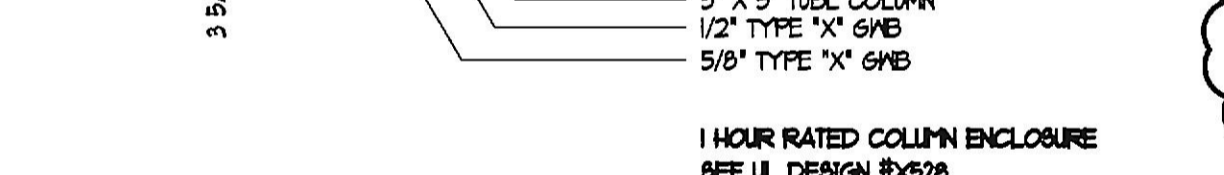
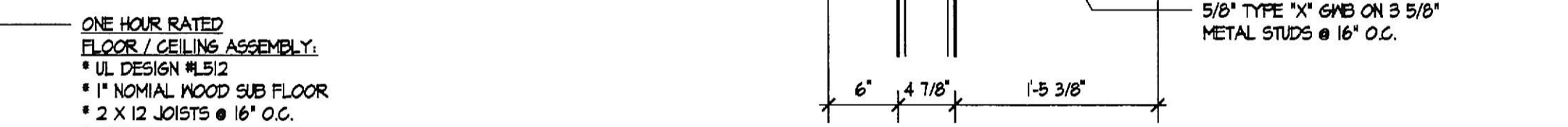
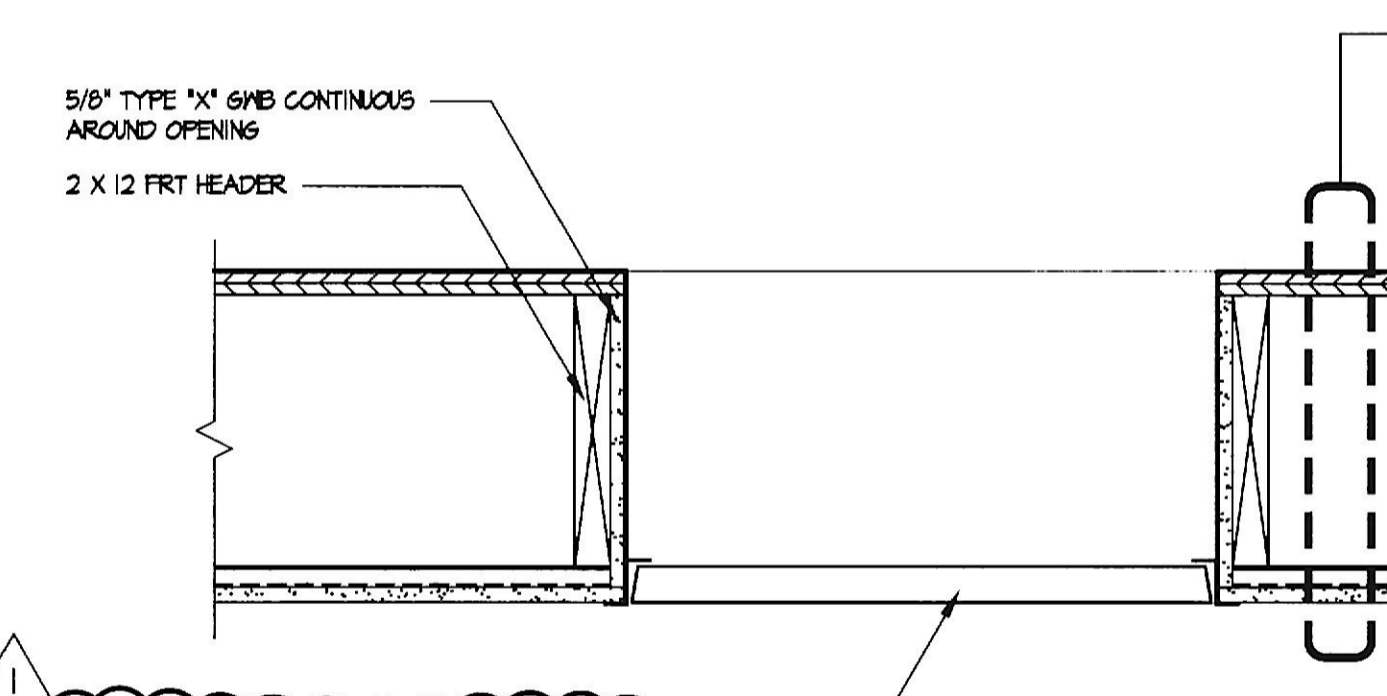


1 ROOF HATCH DETAIL
AS.2 3/4\"/>

6 STEEL BEAM FIRE PROOFING DETAIL #1
AS.2 1\"/>

10 STEEL BEAM FIRE PROOFING DETAIL #2
AS.2 1\"/>

19 EXPANSION JOINT @ FIRE WALL IN EXTERIOR WALL
AS.2 6\"/>

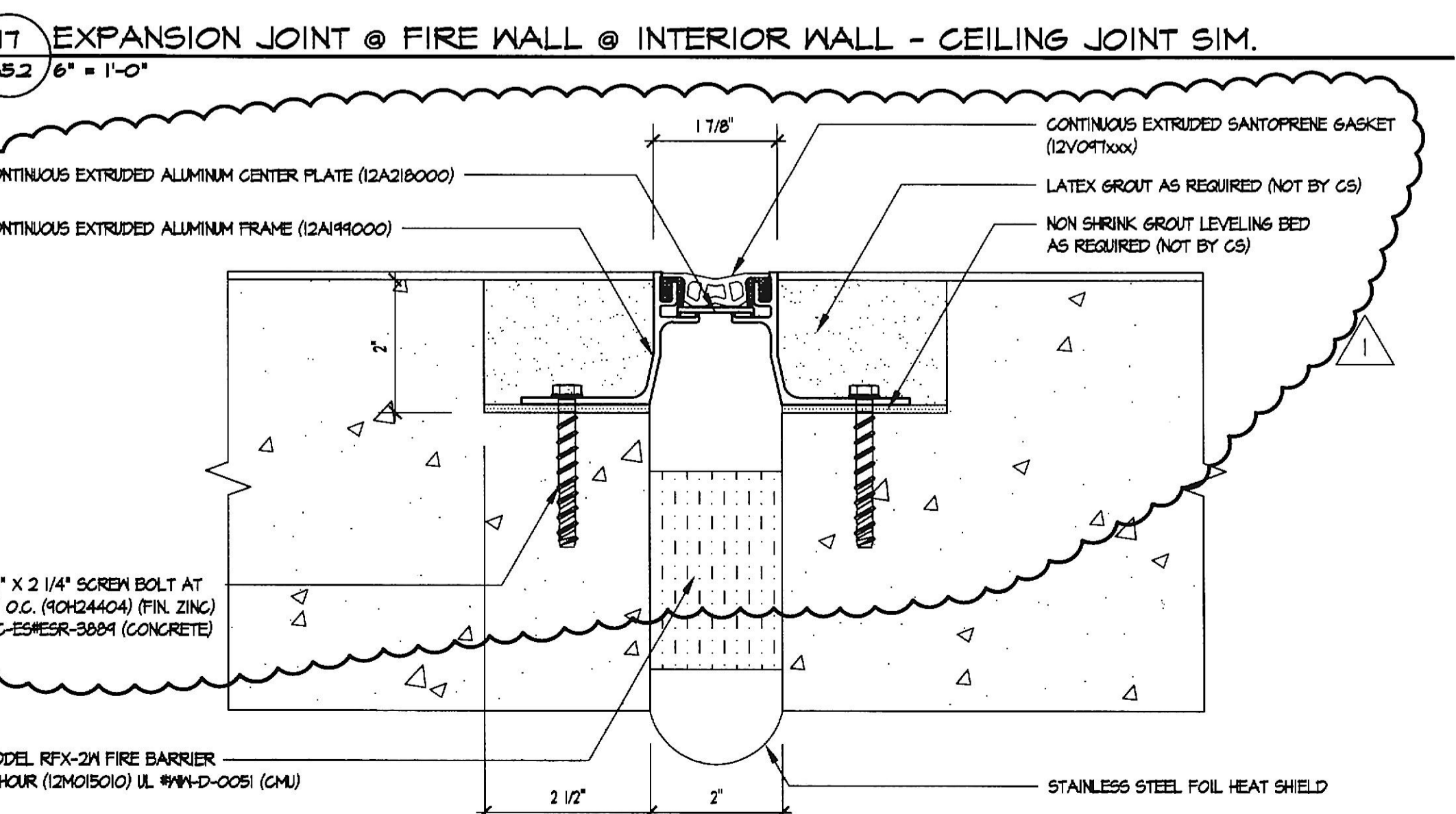
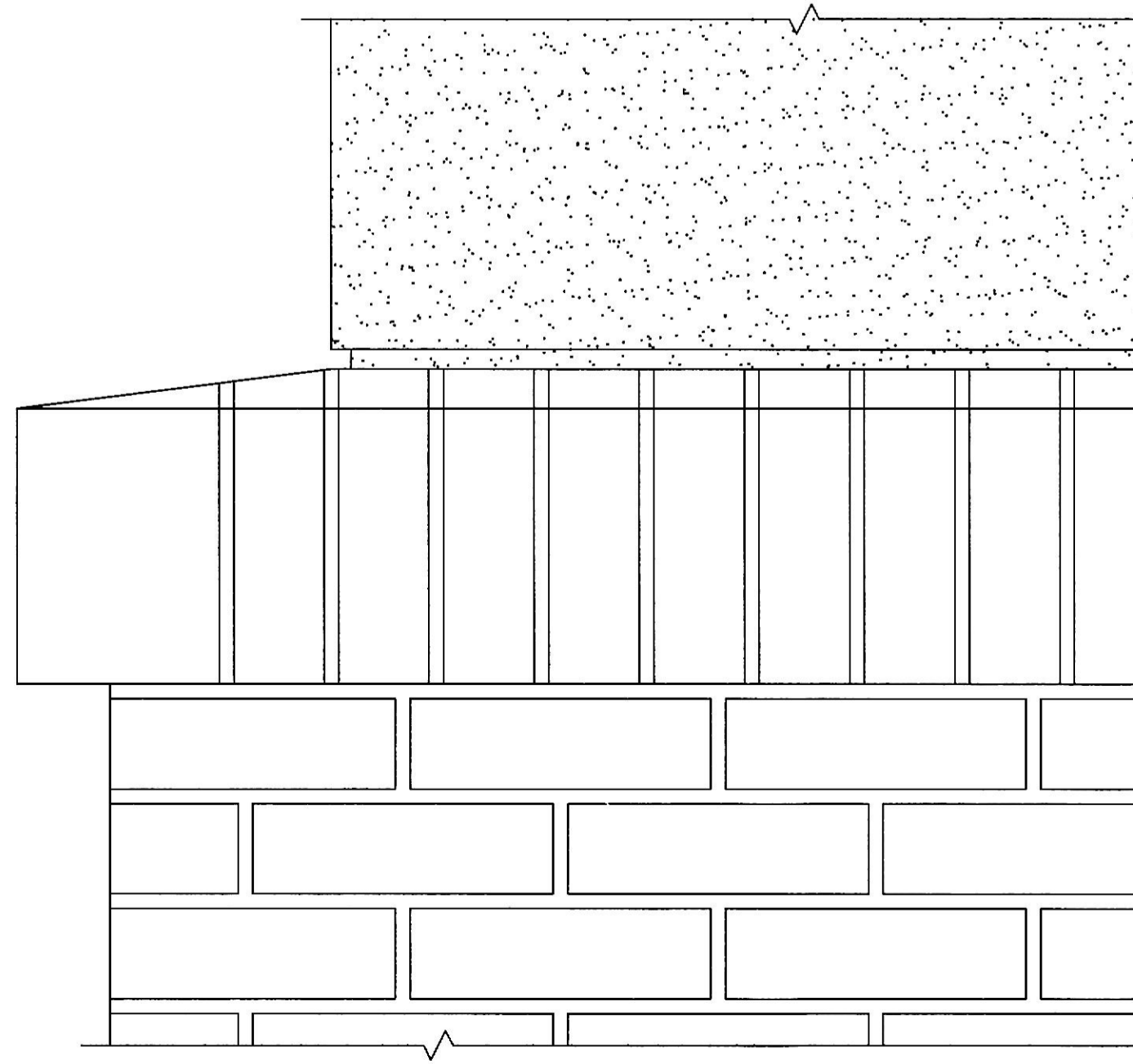


2 ACCESS PANEL
AS.2 1\"/>

7 STEEL BEAM FIRE PROOFING DETAIL #3
AS.2 1\"/>

11 TYPICAL COLUMN DETAIL
AS.2 1\"/>

17 EXPANSION JOINT @ FIRE WALL @ INTERIOR WALL - CEILING JOINT SIM.
AS.2 6\"/>



4 E.I.F.S. COLUN TO BRICK BASE DETAIL
AS.2 5\"/>

8 LOBBY COLUMN DETAIL
AS.2 1\"/>

12 ENTRY COLUMN DETAIL
AS.2 1\"/>

18 EXPANSION JOINT @ FIRE WALL @ FLOOR
AS.2 6\"/>

9 LOBBY COLUMN BASE DETAIL
AS.2 1\"/>

19 ENTRY COLUMN BASE DETAIL
AS.2 1\"/>

REVISIONS	BY

1/26/19 PERMIT JLS

REVIEW COMMENTS

Professional Certification I certify that these documents were prepared or approved by me, and that I am duly licensed architect under the laws of the State of Maryland, license number 2002 A, expiration date February 25, 2020.

Lorien Nursing - Elkridge Addition
 7615 Washington Blvd
 Elkridge, Maryland 21075

DETAILS

DATE April 4, 2019
 SCALE 1" = 1'-0"
 DRAWN
 JOB JOB NUMBER
 SHEET
A5.2
 OF SHEETS