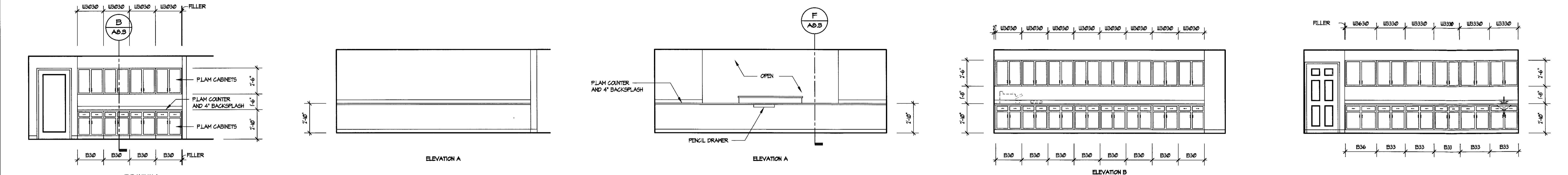


1 LOBBY #179  
A-B 1/4" = 1'-0"

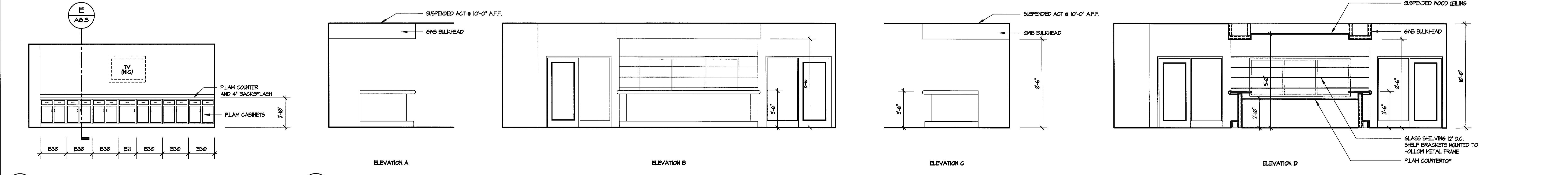


2 NURSES STATION #166  
A-B 1/4" = 1'-0"

3 MAILROOM #175  
A-B 1/4" = 1'-0"

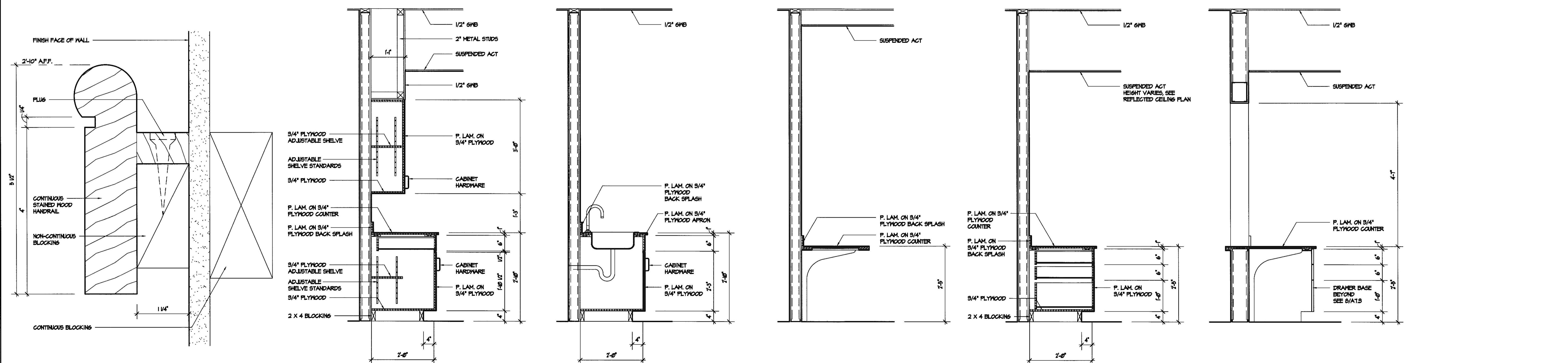
4 RECEPTION #176  
A-B 1/4" = 1'-0"

4 RESIDENT LAUNDRY #655  
A-B 1/4" = 1'-0"



5 CONFERENCE ROOM #643  
A-B 1/4" = 1'-0"

6 NEW BAR @ DINING ROOM #638  
A-B 1/4" = 1'-0"



A HAND RAIL DETAIL  
A-B FULL SCALE

B TYPICAL CABINET DETAIL  
A-B 3/4" = 1'-0"

C SINK CABINET DETAIL  
A-B 3/4" = 1'-0"

D COUNTER  
A-B 3/4" = 1'-0"

E DRAWER BASE CABINET  
A-B 3/4" = 1'-0"

F RECEPTION DEAK  
A-B 3/4" = 1'-0"

REVISIONS	BY
1	1/26/14 PERMIT
REVIEW COMMENTS	

Professional Certification  
I certify that these documents were prepared or approved by me, and that I am duly licensed architect under the laws of the State of Maryland, license number 2002 A, expiration date February 25, 2020.

Lorien Nursing - Elkridge Addition  
7615 Washington Blvd  
Elkridge, Maryland 21075

INTERIOR ELEVATIONS AND CASEWORK SECTIONS

DATE	April 4, 2019
SCALE	As Noted
DRAWN	
JOB	
SHEET	A8.3
	OF SHEETS