

(2) L6"x3"x106x0"-8" LONG WITH VERTICAL SLOT IN LONG LEG TO RECEIVE 3/4" THRU BOLT AT EACH HSS4x3 ROOF CONNECTION UNO.

INSTALL NEW 2x12 WOOD BLOCKING BETWEEN TWO EXISTING JOISTS TO RECEIVE (2) 1/2" THRU BOLTS EACH 3" ANGLE LEG (4 TOTAL EACH BLOCKING) AT EACH HSS4x3 ROOF CONNECTION UNO.

HSS4x3x0.1875" DIAGONAL BRACE AT 8'-0" OC MAXIMUM.

(2) L6"x3"x106x0"-8" LONG WITH VERTICAL SLOT IN LONG LEG TO RECEIVE 3/4" THRU BOLT AT EACH HSS4x3 LEDGER CONNECTION. PROVIDE 1/8" FILLET ALL AROUND EACH CONNECTION SURFACE BETWEEN ANGLE AND LEDGER EACH HSS4x3 LEDGER CONNECTION.

CONTINUOUS C12x20.7 LEDGER WITH 5/8"x4" ADHESIVE ANCHORS AT 2'-0" OC AND EACH SIDE OF SPLICE.

L3"x3"x106x0"-8" LONG WITH (2) 5/8"x4" ADHESIVE ANCHORS INTO EXISTING MASONRY WALL. PROVIDE 1/8" FILLET ALL AROUND EACH CONNECTION SURFACE BETWEEN ANGLE AND LEDGER.

(2) L6"x3"x106x0"-8" LONG WITH VERTICAL SLOT IN LONG LEG TO RECEIVE 3/4" THRU BOLT AT EACH HSS4x3 ROOF CONNECTION UNO.

INSTALL NEW 2x12 WOOD BLOCKING BETWEEN TWO EXISTING JOISTS TO RECEIVE (2) 1/2" THRU BOLTS EACH 3" ANGLE LEG (4 TOTAL EACH BLOCKING) AT EACH HSS4x3 ROOF CONNECTION UNO.

HSS4x3x0.1875" DIAGONAL BRACE AT 8'-0" OC MAXIMUM.

(2) L6"x3"x106x0"-8" LONG WITH VERTICAL SLOT IN LONG LEG TO RECEIVE 3/4" THRU BOLT AT EACH HSS4x3 LEDGER CONNECTION. PROVIDE 1/8" FILLET ALL AROUND EACH CONNECTION SURFACE BETWEEN ANGLE AND LEDGER EACH HSS4x3 LEDGER CONNECTION.

CONTINUOUS C12x20.7 LEDGER WITH 5/8"x4" ADHESIVE ANCHORS AT 2'-0" OC AND EACH SIDE OF SPLICE.

INSTALL NEW 2x12 WOOD BLOCKING BETWEEN TWO EXISTING JOISTS TO RECEIVE (2) 1/2" THRU BOLTS AT EACH FRONT WALL HSS4x3 ROOF CONNECTION.

(2) L6"x3"x106x0"-8" LONG WITH VERTICAL SLOT IN LONG LEG TO RECEIVE 3/4" THRU BOLT AT EACH HSS4x3 LEDGER CONNECTION. PROVIDE 1/8" FILLET ALL AROUND EACH CONNECTION SURFACE BETWEEN ANGLE AND LEDGER EACH HSS4x3 LEDGER CONNECTION.

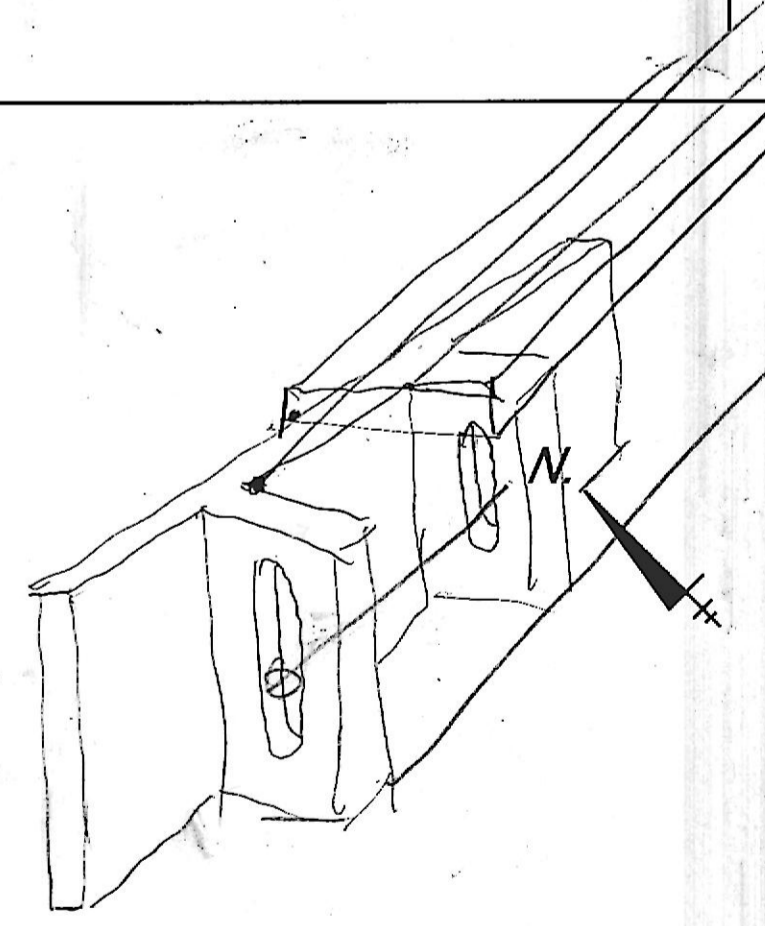
EXISTING ROOF FRAMING TO BE REVIEWED BY EOR AFTER FINISH/INSULATION/HVAC ARE REMOVED TO VERIFY CONDITION AND PROVIDE REINFORCING/REPAIR AS REQUIRED.

HSS4x3x0.1875" DIAGONAL BRACE AT 8'-0" OC MAXIMUM.

CONTINUOUS C12x20.7 LEDGER WITH 5/8"x4" ADHESIVE ANCHORS AT 2'-0" OC AND EACH SIDE OF SPLICE.

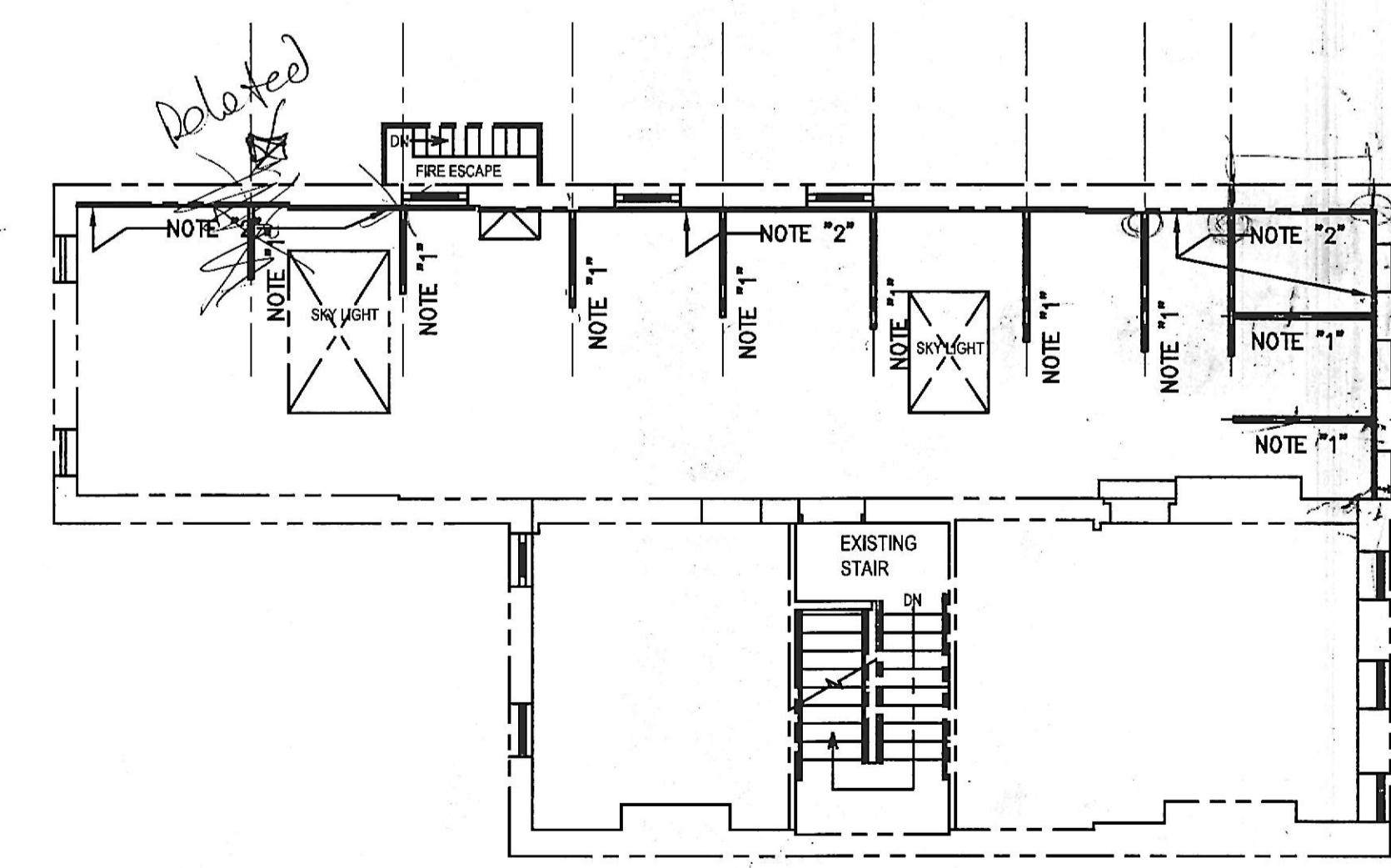
EXISTING MASONRY WALL

TOP OF THIRD FLOOR



Wall Brace Layout Plan
1/2" = 1'-0"

- HSS4x3x0.1875" DIAGONAL BRACE WITH CLIP ANGLES AND 3/4" THRU BOLTS EACH END AT 8'-0" OC MAXIMUM. INSTALL NEW 2x12 WOOD BLOCKING BETWEEN TWO EXISTING JOISTS AT EACH HSS4x3 ROOF CONNECTION.
- CONTINUOUS C12x20.7 LEDGER WITH 5/8"x4" ADHESIVE ANCHORS AT 2'-0" OC AND EACH SIDE OF SPLICE.
- EXISTING ROOF FRAMING TO BE REVIEWED BY EOR AFTER FINISH/INSULATION/HVAC ARE REMOVED TO VERIFY CONDITION AND PROVIDE REINFORCING/REPAIR RECOMMENDATIONS AS REQUIRED.



DWG NO.	S20
TITLE	Structural Plan and Section
PROJECT	M.J.C.A ANNEX BLDG
PROJECT MANAGER	M.J.C.A ASSOCIATES
DATE	05-25-16
ISSUE DATE	05-25-16
LATEST REVISION	
PROJECT FILE NAME	MILW-SP-16
PROJECT ADDRESS	118 W. LANVALE STREET BALTIMORE, MARYLAND
DATE	05-25-16
BY	mjbey
CHK	slw
APP	slw
SCALE	AS SHOWN
COPYRIGHT	© 2016 M.J.C.A. ASSOCIATES