

(2) L6"x3"x10GAx0'-8" LONG WITH VERTICAL SLOT IN LONG LEG TO RECEIVE 3/4" THRU BOLT AT EACH HSS4x3 ROOF CONNECTION UNO.

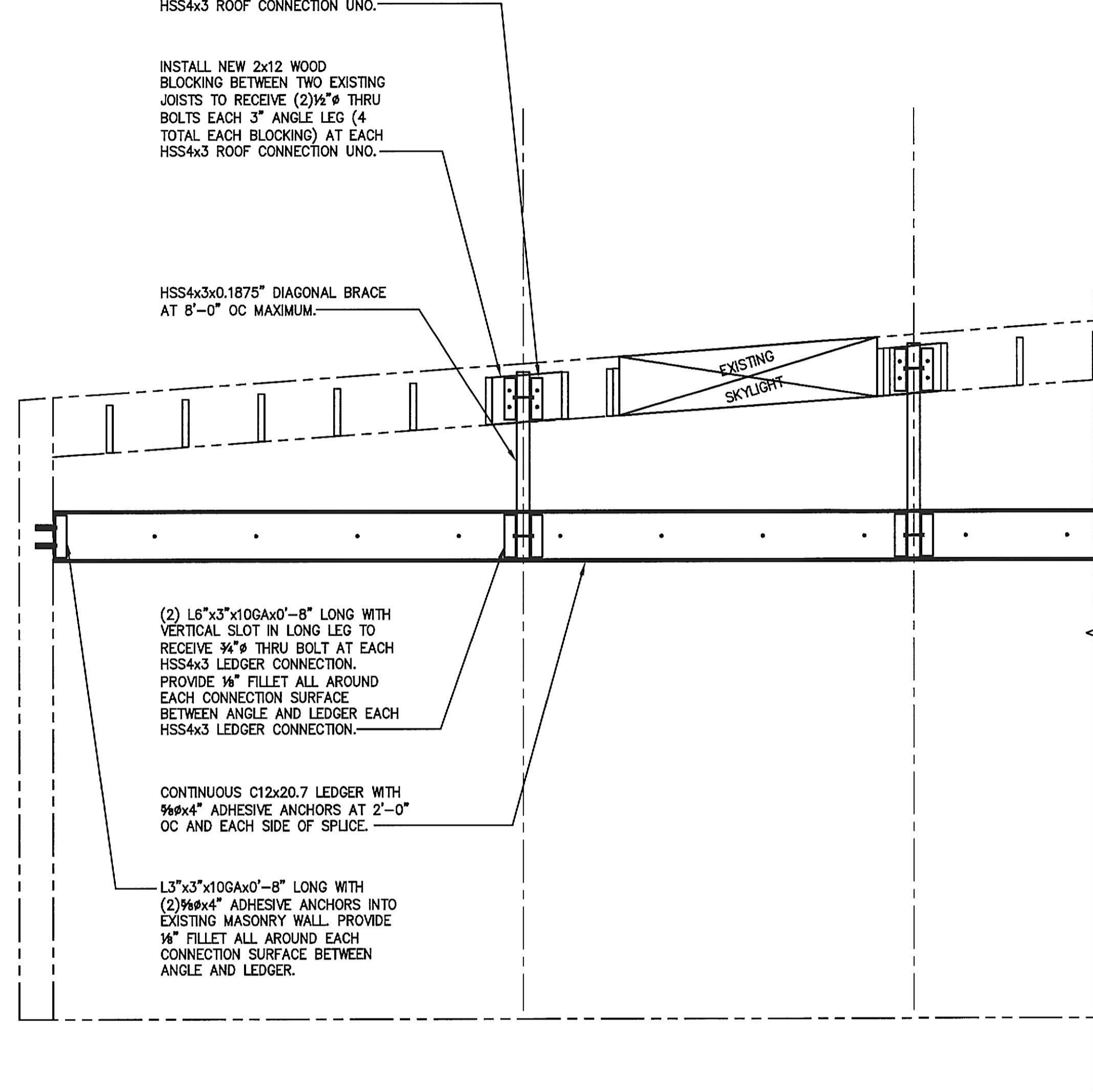
INSTALL NEW 2x12 WOOD BLOCKING BETWEEN TWO EXISTING JOISTS TO RECEIVE (2) 3/4" THRU BOLTS EACH 3" ANGLE LEG (4 TOTAL EACH BLOCKING) AT EACH HSS4x3 ROOF CONNECTION UNO.

HSS4x3x0.1875" DIAGONAL BRACE AT 8'-0" OC MAXIMUM.

(2) L6"x3"x10GAx0'-8" LONG WITH VERTICAL SLOT IN LONG LEG TO RECEIVE 3/4" THRU BOLT AT EACH HSS4x3 LEDGER CONNECTION. PROVIDE 1/4" FILLET ALL AROUND EACH CONNECTION SURFACE BETWEEN ANGLE AND LEDGER EACH HSS4x3 LEDGER CONNECTION.

CONTINUOUS C12x20.7 LEDGER WITH 3/8"x4" ADHESIVE ANCHORS AT 2'-0" OC AND EACH SIDE OF SPLICE.

L3"x3"x10GAx0'-8" LONG WITH (2) 3/8"x4" ADHESIVE ANCHORS INTO EXISTING MASONRY WALL. PROVIDE 1/4" FILLET ALL AROUND EACH CONNECTION SURFACE BETWEEN ANGLE AND LEDGER.



(2) L6"x3"x10GAx0'-8" LONG WITH VERTICAL SLOT IN LONG LEG TO RECEIVE 3/4" THRU BOLT AT EACH HSS4x3 ROOF CONNECTION UNO.

INSTALL NEW 2x12 WOOD BLOCKING BETWEEN TWO EXISTING JOISTS TO RECEIVE (2) 3/4" THRU BOLTS EACH 3" ANGLE LEG (4 TOTAL EACH BLOCKING) AT EACH HSS4x3 ROOF CONNECTION UNO.

HSS4x3x0.1875" DIAGONAL BRACE AT 8'-0" OC MAXIMUM.

(2) L6"x3"x10GAx0'-8" LONG WITH VERTICAL SLOT IN LONG LEG TO RECEIVE 3/4" THRU BOLT AT EACH HSS4x3 LEDGER CONNECTION. PROVIDE 1/4" FILLET ALL AROUND EACH CONNECTION SURFACE BETWEEN ANGLE AND LEDGER EACH HSS4x3 LEDGER CONNECTION.

CONTINUOUS C12x20.7 LEDGER WITH 3/8"x4" ADHESIVE ANCHORS AT 2'-0" OC AND EACH SIDE OF SPLICE.

(2) L6"x3"x10GAx0'-8" LONG WITH VERTICAL SLOT IN LONG LEG TO RECEIVE 3/4" THRU BOLT AT EACH HSS4x3 LEDGER CONNECTION. PROVIDE 1/4" FILLET ALL AROUND EACH CONNECTION SURFACE BETWEEN ANGLE AND LEDGER EACH HSS4x3 LEDGER CONNECTION.

*Building Section*  
1/8" = 1'-0"

INSTALL NEW 2x12 WOOD BLOCKING BETWEEN TWO EXISTING JOISTS TO RECEIVE (2) 3/4" THRU BOLTS AT EACH FRONT WALL HSS4x3 ROOF CONNECTION.

(2) L6"x3"x10GAx0'-8" LONG WITH VERTICAL SLOT IN LONG LEG TO RECEIVE 3/4" THRU BOLT AT EACH HSS4x3 LEDGER CONNECTION. PROVIDE 1/4" FILLET ALL AROUND EACH CONNECTION SURFACE BETWEEN ANGLE AND LEDGER EACH HSS4x3 LEDGER CONNECTION.

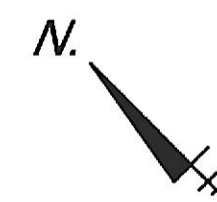
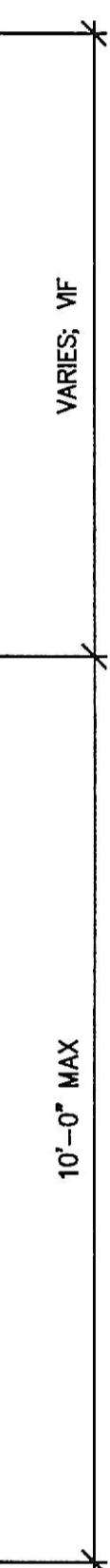
EXISTING ROOF FRAMING TO BE REVIEWED BY EOR AFTER FINISH/INSULATION/HVAC ARE REMOVED TO VERIFY CONDITION AND PROVIDE REINFORCING/REPAIR RECOMMENDATIONS AS REQUIRED.

HSS4x3x0.1875" DIAGONAL BRACE AT 8'-0" OC MAXIMUM.

CONTINUOUS C12x20.7 LEDGER WITH 3/8"x4" ADHESIVE ANCHORS AT 2'-0" OC AND EACH SIDE OF SPLICE.

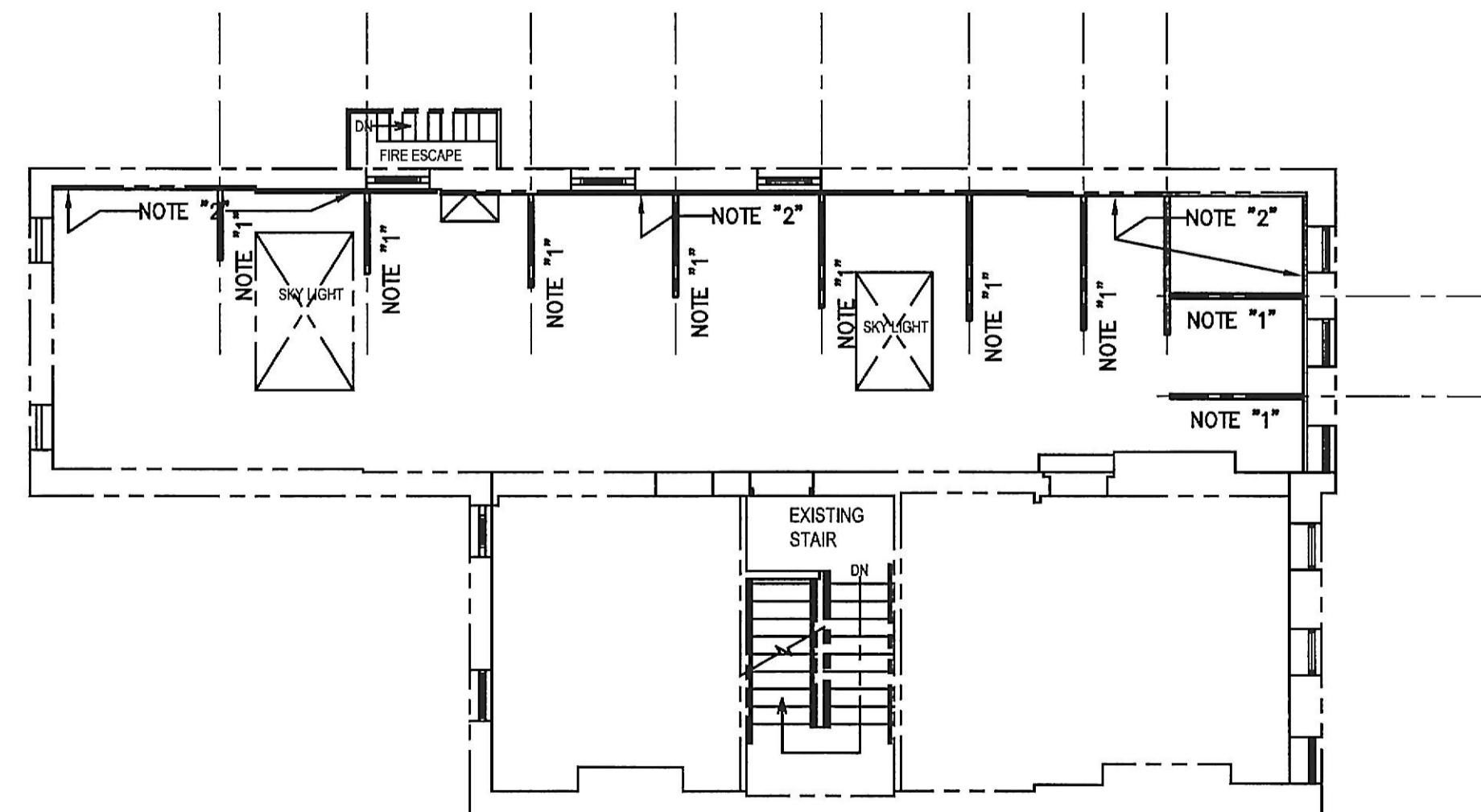
EXISTING MASONRY WALL

TOP OF THIRD FLOOR



*Wall Brace Layout Plan*  
1/8" = 1'-0"

- HSS4x3x0.1875" DIAGONAL BRACE WITH CLIP ANGLES AND 3/4" THRU BOLTS EACH END AT 8'-0" OC MAXIMUM. INSTALL NEW 2x12 WOOD BLOCKING BETWEEN TWO EXISTING JOISTS AT EACH HSS4x3 ROOF CONNECTION.
- CONTINUOUS C12x20.7 LEDGER WITH 3/8"x4" ADHESIVE ANCHORS AT 2'-0" OC AND EACH SIDE OF SPLICE.
- EXISTING ROOF FRAMING TO BE REVIEWED BY EOR AFTER FINISH/INSULATION/HVAC ARE REMOVED TO VERIFY CONDITION AND PROVIDE REINFORCING/REPAIR RECOMMENDATIONS AS REQUIRED.



REV. NO.	DATE	DESCRIPTION

STRUCTURAL:  
**SKARDA AND ASSOCIATES**  
248 NORTH CHARLES STREET  
BALTIMORE, MARYLAND 21201  
410.526.8284

PROJECT MANAGER:  
**M.I.C.A.**  
1300 MOUNT ROYAL AVENUE  
BELTFRANCE, MARYLAND  
301.242.5201

18577 TOWN HAVENS ROAD  
SUITE 4250  
BALTIMORE, MD 21286  
WWW.MI-C-A.COM  
410.526.4600

**ARIUM | AE**

PROJECT:  
**M.I.C.A. ANNEX BLDG**  
THIRD FLOOR  
115 W. LANVALE STREET  
BALTIMORE, MARYLAND

TITLE: Structural Plan and Section  
DESIGNER: M.I.C.A.  
DATE: 05-23-18  
ISSUE DATE: 05-23-18  
SCALE: PK, S, Stair, etc.  
DRAWN BY: mibey  
CHECKED BY: mibey  
APPROVED BY: mibey  
COPYRIGHT © 2018 ARIUM | AE, LLC

FIG. NO.  
**S20**