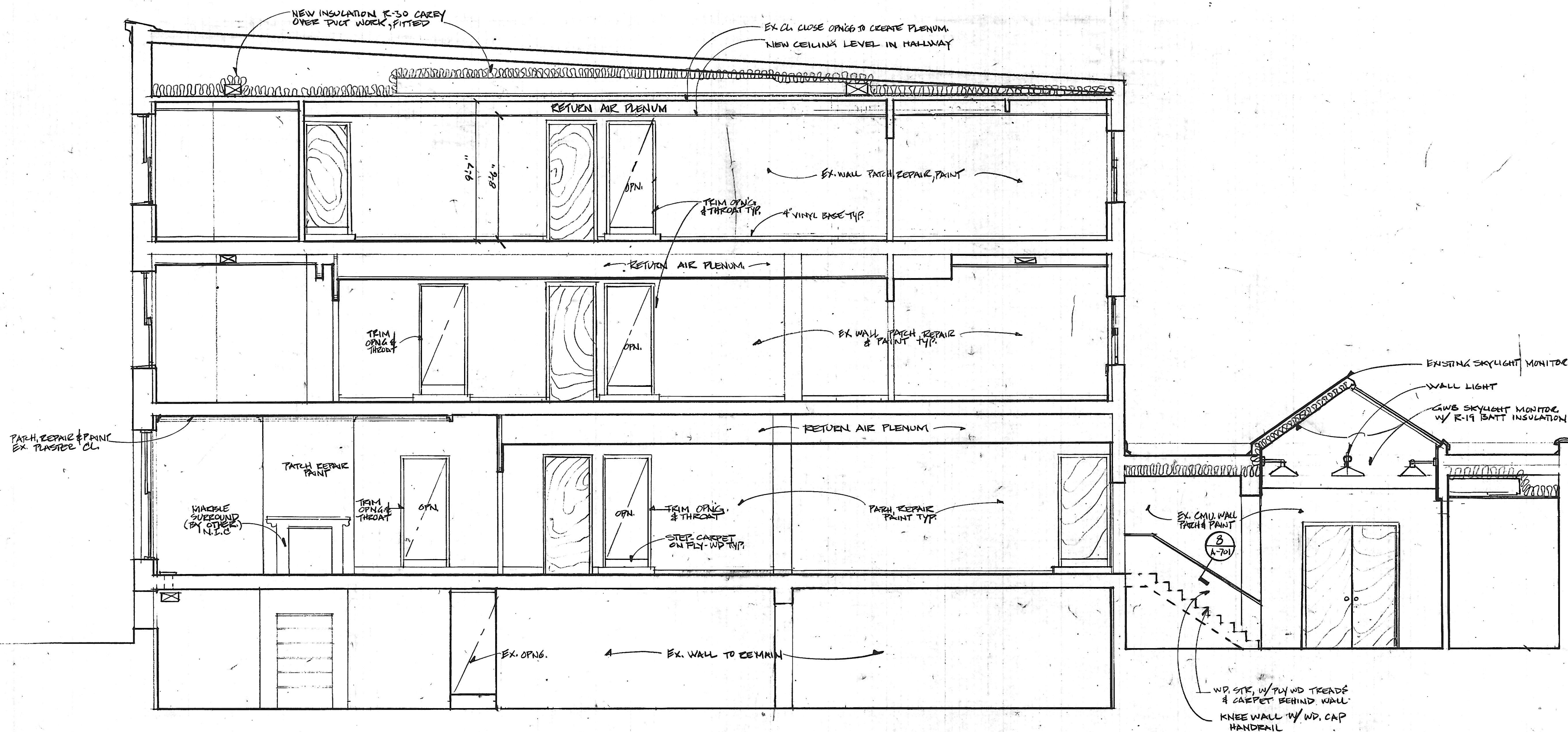


**GENERAL NOTES**

- ① MAINTAIN MAX CEILING HEIGHTS  
RUN DUCT WORK BTN EX. FRAMING



1. Longitudinal Section West

A-502

NO.	DATE	DESCRIPTION

**Cho Wilks & Benn**  
 316 North Charles Street  
 Baltimore, Maryland 21201  
 (301) 576-0440  
 ARCHITECTS

**MARYLAND institute**

DRAWN BY: JCM CHECKED BY:

**Longitudinal Section - West**

PROJECT NO.: 1710 SHEET NO.:  
 SCALE: 1/4" = 1'-0"  
 DATE: 10-27-88  
 LATEST REV.: 10-27-88

**A-502**