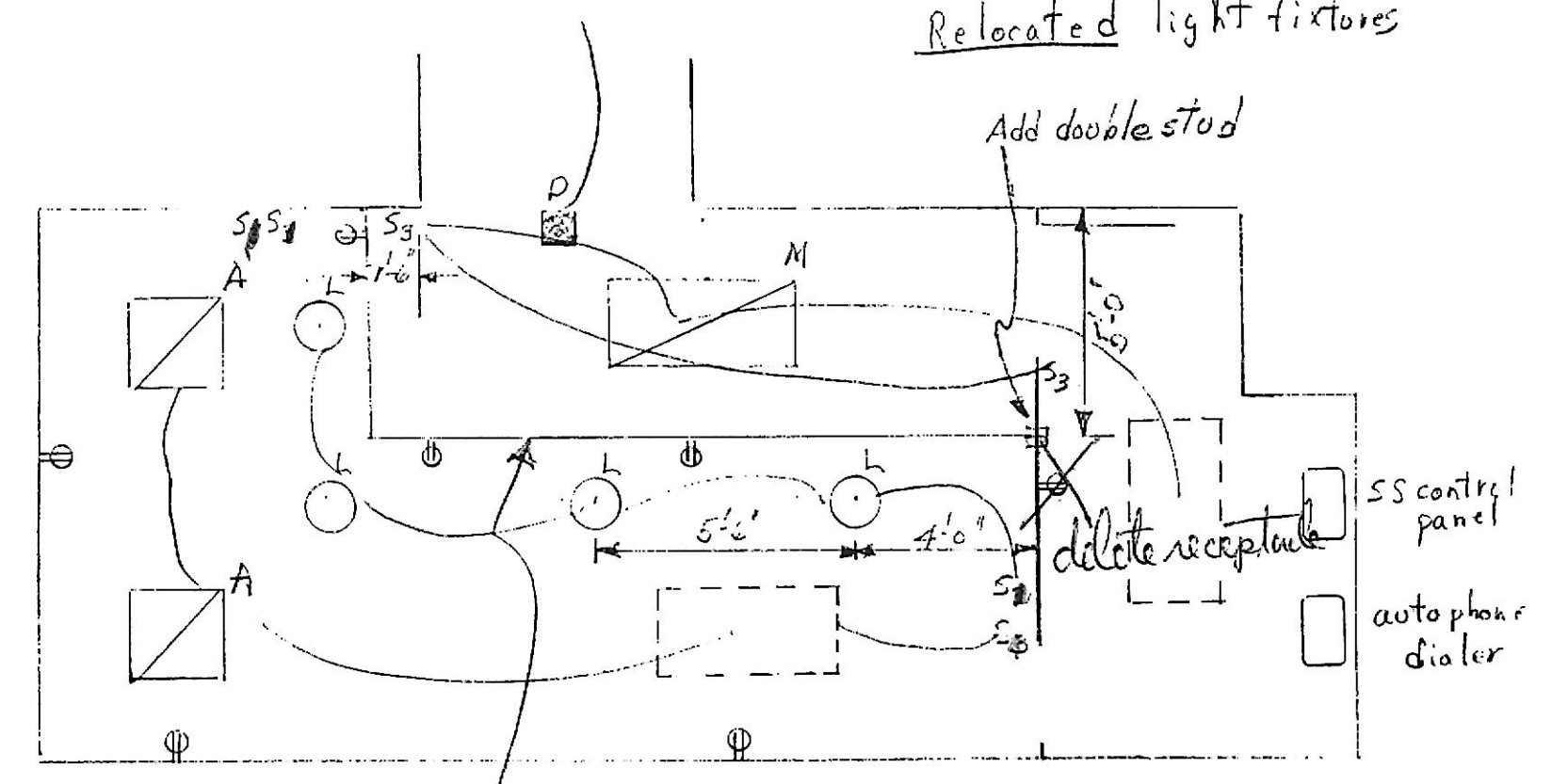
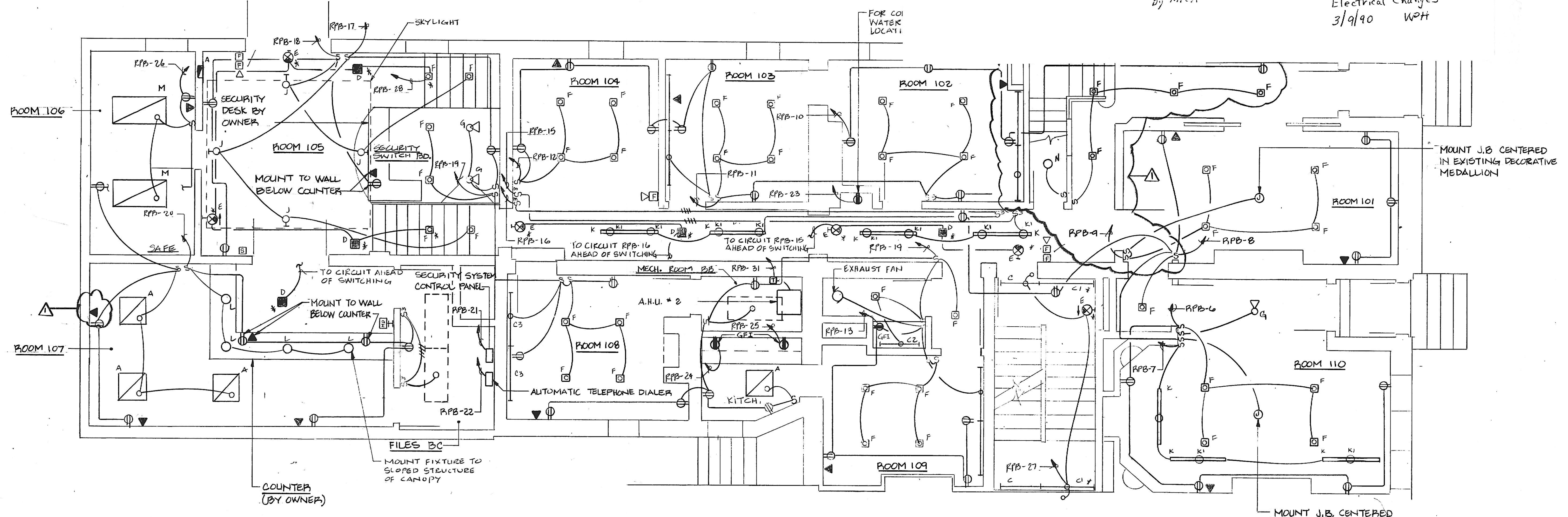


Added  
 1 - duplex receptacle  
 1 - 2x4 fluorescent fixture  
 Deleted  
 1 - 2x2 fluorescent fixture  
 Relocated light fixture



Room 107  
 Electrical Changes  
 3/9/90 WPH



- GENERAL NOTES**
- Unless noted otherwise, all raceways and wiring shall be concealed in walls or above ceilings except where ceilings are not provided and panelboards are surface mounted.
  - The Lighting Scheme shown on this plan is for the base bid. See architectural reflected ceiling plans for alternate #2 lighting system differences. Cove lighting and associated switches and wiring in stairwell, Rooms 108, 102, 103, & 109 shall not be installed as a part of the base bid.
  - Wiring devices shown along inside perimeters of exterior walls shall be surface mounted and wired using a surface metal raceway system for the base bid. Under Alternate #1, provide recessed mounted wiring devices and concealed BX wiring in furred-out walls.

NO.	DATE	DESCRIPTION
1	7-28-89	REVISION TO LIGHTS & RECEPTACLES

**Cho Wilks & Benn**  
 ARCHITECTS  
 316 North Charles Street  
 Baltimore, Maryland 21201  
 (301) 576-0440

**MARYLAND INSTITUTE**

DRAWN BY: N.H. CHECKED BY: R.A.

**FIRST FLOOR PLAN**  
 Contract Pkg.

PROJECT NO: 1710	SHEET NO: E-2
SCALE: AS NOTED	
DATE: 10-27-88	
LATEST REV: 8-11-89	

FIRST FLOOR PLAN  
 SCALE: 1/4" = 1'-0"

2 2 x 40