

FIRE ALARM RISER DIAGRAM
SCALE: NONE

- NOTES:
1. ALL WIRING SHALL BE IN A MINIMUM OF 1/2" CONDUIT.
 2. ALL WIRING SHALL PG FOR MANUFACTURERS REQUIREMENTS AND NFPA.

FIRE PROTECTION SYSTEM ZONES

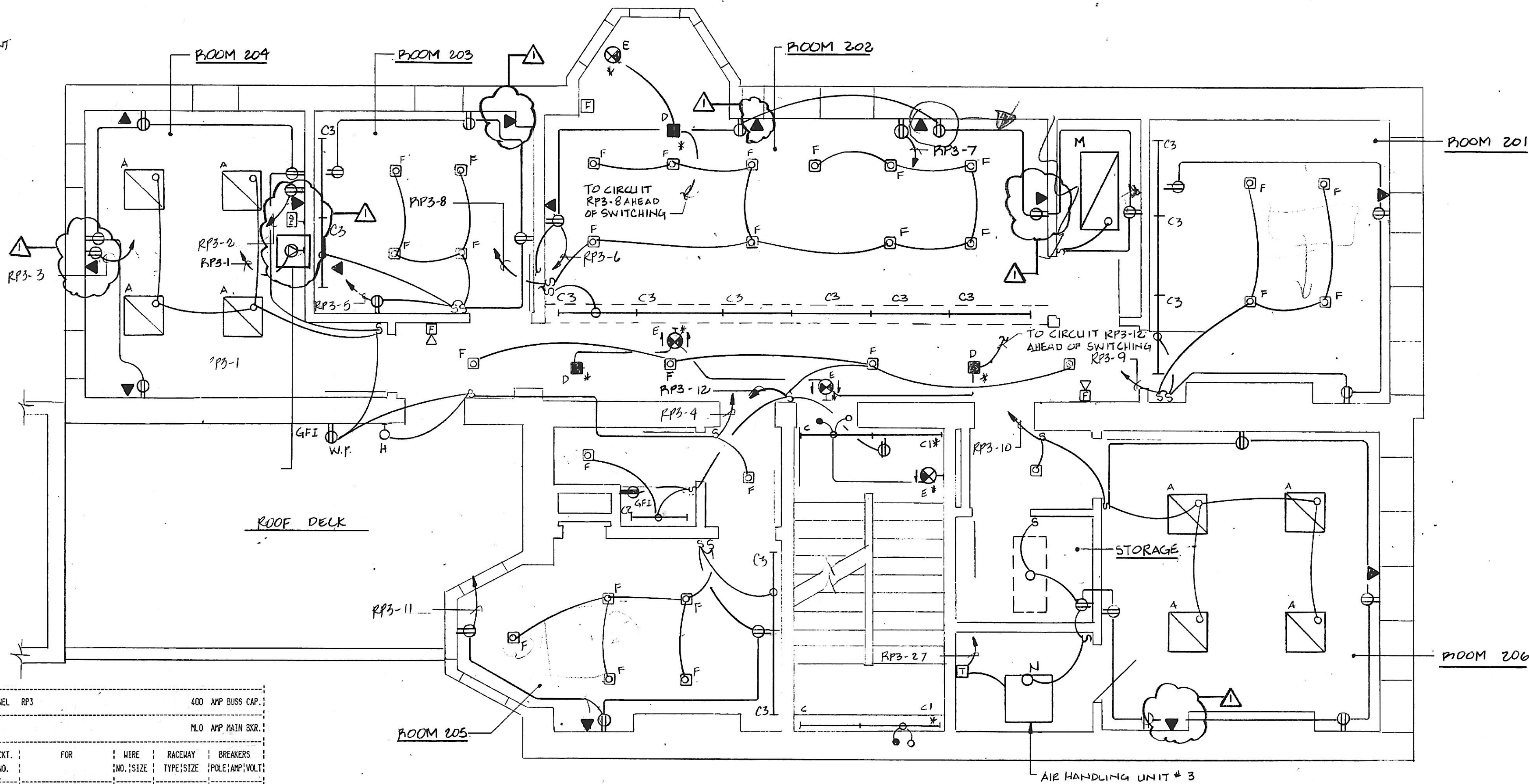
ALARM ZONES

DESIGNATION	ZONE
Z1	BASEMENT MANUAL PULL STATION
Z2	1ST FLOOR MANUAL PULL STATION
Z3	BASEMENT SMOKE DETECTOR
Z4	2ND FLOOR MANUAL PULL STATION
Z5	3RD FLOOR MANUAL PULL STATION
Z6	3RD FLOOR DUCT DETECTOR

ANNUNCIATOR ZONES

1. BASEMENT LEVEL
2. 1ST FLOOR LEVEL
3. 2ND FLOOR LEVEL
4. 3RD FLOOR LEVEL

SCHEDULE OF PANEL RPS		400 AMP BUSS CAP.	
3 PHASE	4 WIRE	208/120 VOLTS	120 AMP MAIN BRK.
1 MAIN FRAME COOP.	3 12 BX	2 20 240	2 COMPUTER IN COMP. RM
3 COMP. EQUIP. COOP. ROOM	3 12 BX	1 20 120	6 WORK AREA SYS.
5 COMPUTER DIRECTOR	3 12 BX	1 20 120	8 SYSTEMS OPER. DB
7 COMPUTER IN WORK AREA	3 12 BX	1 20 120	10 HALLWAY SEC.
9 DIRECTOR ANNUAL FUND	3 12 BX	1 20 120	12 CORR. LGTS & RECEPT. ETC.
11 DIRECTOR MAJOR GIFTS	3 12 BX	1 20 120	14 ACCOUNTS PAY. & CLOSET
13 SPACE	3 12 BX	1 20 120	16 PERS. PAYROLL & RECEPT.
15 CONTROLLER & PERSONAL PAY	3 12 BX	1 20 120	18 V.P. BUS., CONF. & STOR.
17 V.P. BUSINESS	3 12 BX	1 20 120	20 BATHROOM & HALL
19 GRANTS MGR DB	3 12 BX	1 20 120	22 CONDENSING UNIT #1
21 CORR. LGTS & RECEPT.	3 12 BX	1 20 120	24 CONDENSING UNIT #2
23 CONDENSING UNIT #4	3/1 6/8 C 1"	3 70 240	26 CONDENSING UNIT #3
25 JANU #4	3 12 BX	1 15 120	28 SPACE
27 JANU #3	3 12 BX	1 15 120	30 SPACE
29 UNITY HEATER	3 12 BX	2 15 240	
31 SPACE			
33 SPACE			



SECOND FLOOR PLAN
SCALE: 1/4" = 1'-0"

GENERAL NOTES

1. Unless noted otherwise, all raceways and wiring shall be concealed in walls or above ceilings between joists except where ceilings are not provided and panelboards are surface mounted.
2. The Lighting Scheme shown on this plan is for the base bid. See architectural reflected ceiling plan for alternate lighting system differences. Cove lighting and associated switches and wiring in stairwell, Rooms 203, 204, 201, & 205 shall not be installed as a part of the base bid.
3. Wiring devices shown along inside perimeters of exterior walls shall be surface mounted and wired using a surface metal raceway system for the base bid. Under Alternate #1, provide recessed mounted wiring devices and concealed BX wiring in furred-out walls.

NO.	DATE	DESCRIPTION
7-28-89		REVISION TO LIGHTS & RECEPTACLES

Cho Wilks & Benn
316 North Charles Street
Baltimore, Maryland 21201
(301) 576-0440
ARCHITECTS

MARYLAND INSTITUTE

DRAWN BY: N. H. CHECKED BY: R. A.

SECOND FLOOR PLAN
Contract Pwg.

PROJECT NO: 1710	SHEET NO: E-3
SCALE: AS NOTED	
DATE: 10-27-88	
LATEST REV: 8-11-89	