

MARYLAND INSTITUTE

College of Art
administrative offices

Architect
Mechanical·Electrical
Structural

Cho, Wilks & Benn
Kibart, Inc.
LPJ, Inc.

Index (40)

C-1 Cover Sheet

Architectural

- A-101 Site Plan
- A-201 Demolition: Basement
- A-202 Demolition: First Floor
- A-203 Demolition: Second Floor
- A-204 Demolition: Third Floor
- A-205 Demolition: Roof
- A-251 Demolition: North/South Elevations
- A-252 Demolition: East Elevation
- A-301 Basement Floor Plan
- A-302 First Floor Plan
- A-303 Second Floor Plan
- A-304 Third Floor Plan
- A-305 Roof Plan
- A-351 Reflected Ceiling Plan: Basement/First (Base Bid)
- A-352 Reflected Ceiling Plan: Second/Third (Base Bid)
- A-353 Reflected Ceiling Plan: Basement/First (Alternate #2)
- A-354 Reflected Ceiling Plan: Second/Third (Alternate #2)

- A-401 North/South Elevations
- A-402 East Elevation
- A-501 Sections, Main Stair, Cross Section
- A-502 Longitudinal Section - West

- A-601 Interior Elevations

- A-701 Details
- A-702 Details
- A-811 Schedules/wall types

Structural

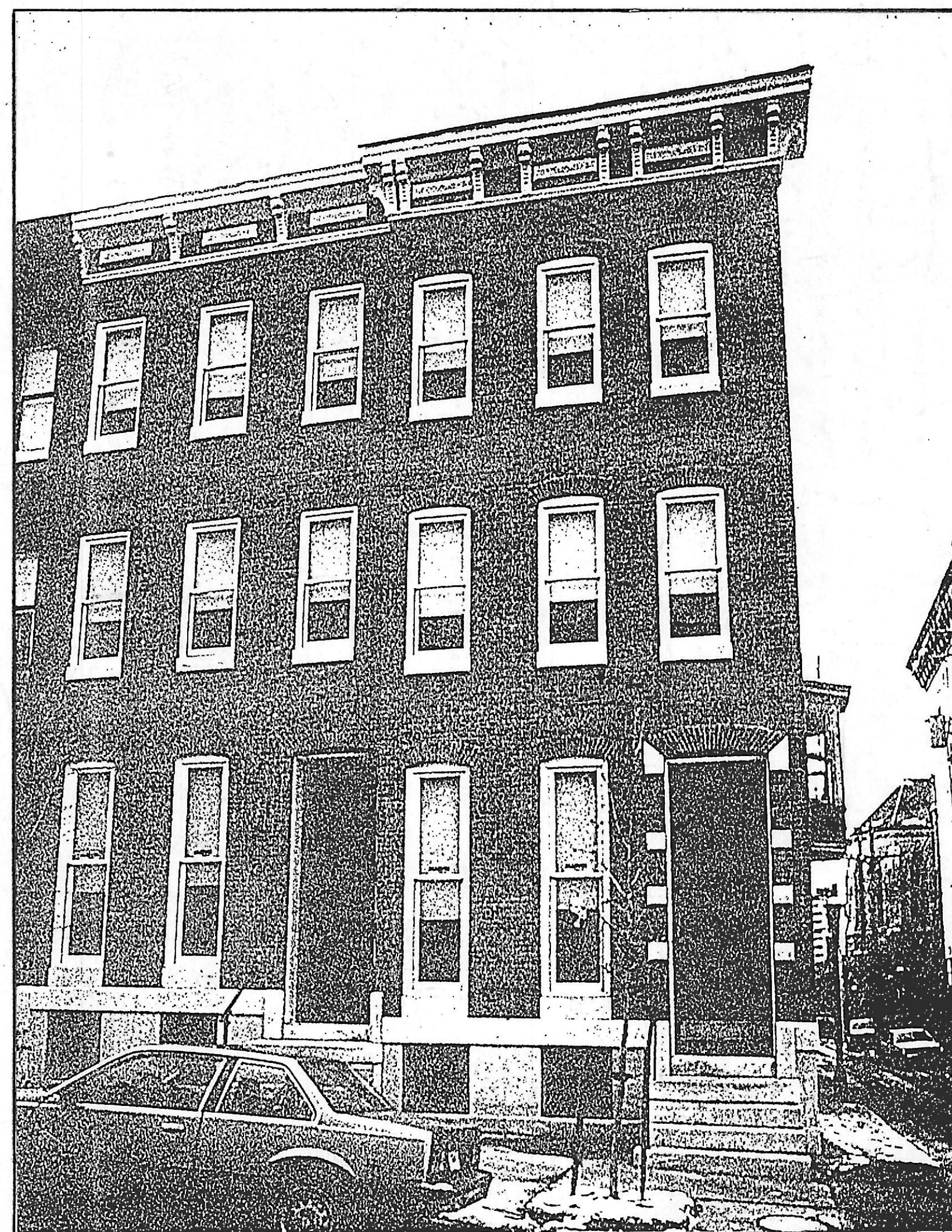
- S-1 Basement Floor Plan and General Notes
- S-2 First Floor Framing Plan
- S-3 Second Floor Framing Plan
- S-4 Third Floor Framing Plan
- S-5 Roof Framing Plan

Mechanical/Electrical

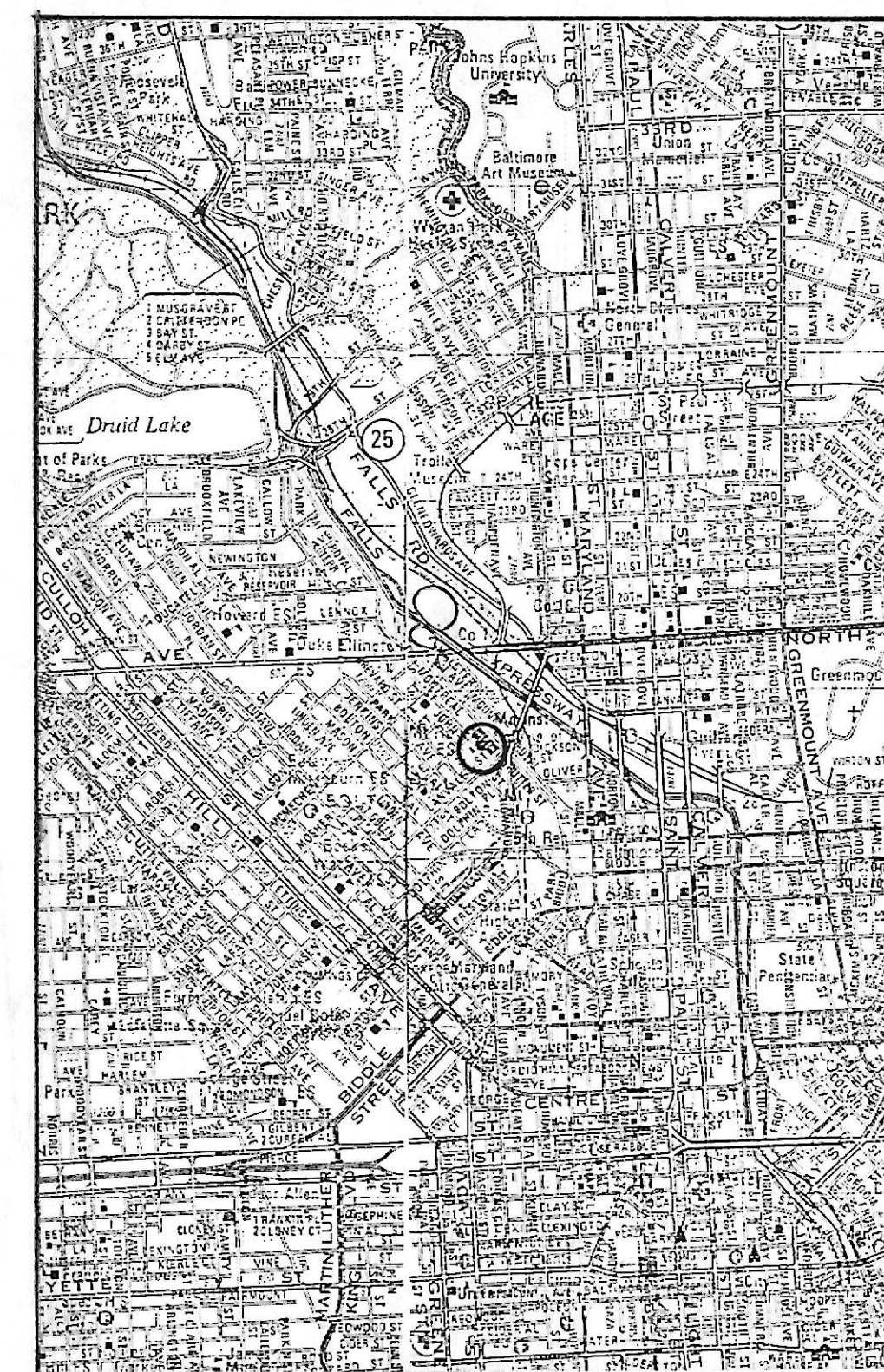
- ME-1 Roof Plan
- M-1 Basement Floor Plan
- M-2 First Floor Plan
- M-3 Second Floor Plan
- M-4 Third Floor Plan
- M-5 Riser Diagrams, Schedules, and Legend

- E-1 Basement Floor Plan
- E-2 First Floor Plan
- E-3 Second Floor Plan
- E-4 Third Floor Plan

All dated latest revision 8-11-89



Location Map Zoning R-6 residential



Cho Wilks & Benn
316 North Charles Street
Baltimore, Maryland 21201
(301) 576-0440
ARCHITECTS

MARYLAND
institute

DRAWN BY: JCM CHECKED BY:

COVER SHEET

Contract Drawings

PROJECT NO: 110 SHEET NO:

SCALE: C-1

DATE: 8-11-89

LATEST REV: 8-11-89