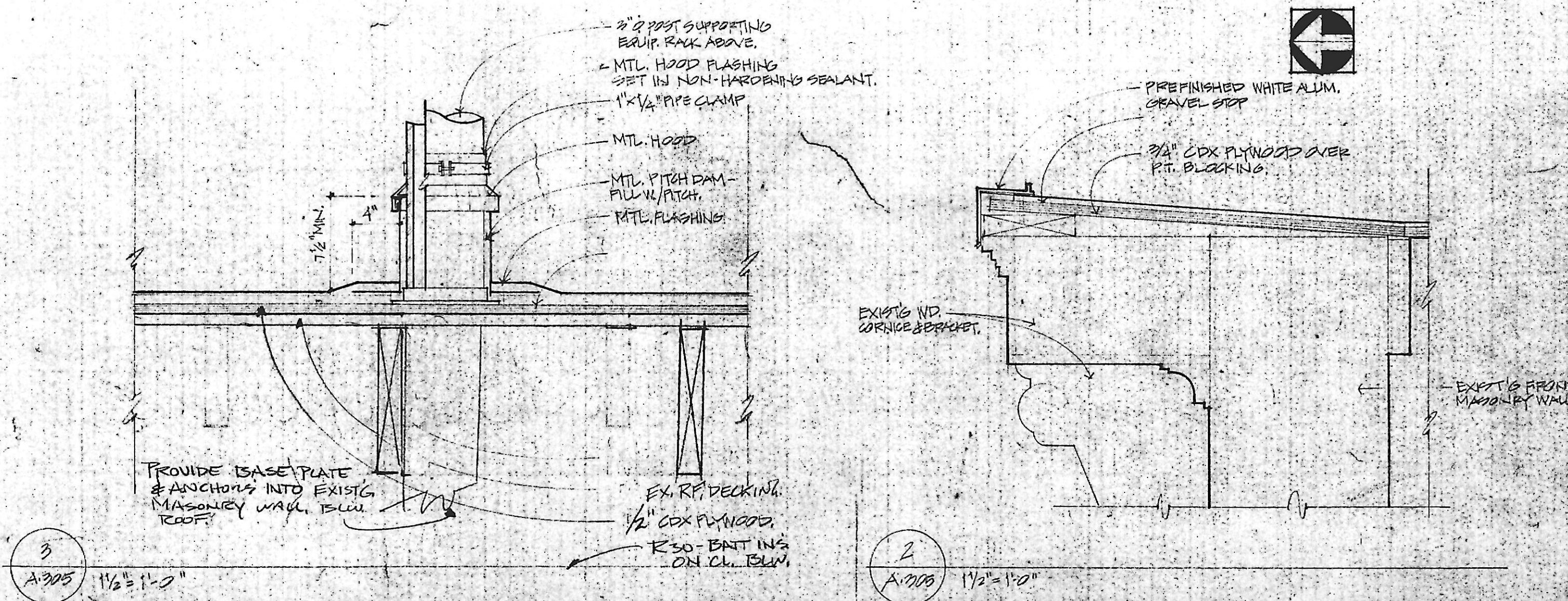


1 Roof Plan  
A-305



- GENERAL NOTE**
1. REPAIR CRACKS IN CONCRETE WITH 1/2" WIRE GLASS MESH TEXTURE
  2. CAULK & SEAL SLABING
  3. REPAIR ANY LEAKAGE POINTS
  4. PRIME PAINT EXISTING MULLIONS
  5. FLASH PERIMETER
2. APPLY 1/2" CDX UNDECLAYMINT PLYWOOD OVER ALL EXISTING ROOF SURFACES

**3 BASE BID**  
BUILT UP ROOF 3/4" 30'S

**4 ALTERNATE #3**  
MODIFIED BITUMEN SEE SPEC

NO	DATE	DESCRIPTION

Cho Wilks & Benn  
316 North Charles Street  
Baltimore, Maryland 21201  
(301) 576-0480  
ARCHITECTS

**MARYLAND INSTITUTE**

DRAWN BY: JGM CHECKED BY:

**Roof Plan Proposed**

Contract Dwg

PROJECT NO: 1112 SHEET NO:

SCALE: 1/4" = 1'-0" A-305

DATE: 8-11-89

LATEST REV: 8-11-89